

HALLMARK

THE LACEY GREEN & LOOSLEY ROW MAGAZINE



by Brian Panter

AUGUST 2005

NUMBER 195

ESTABLISHED 1970

HALLMARK

THE LACEY GREEN & LOOSLEY ROW MAGAZINE

AUTUMN 2005

Hallmark is published quarterly by the Lacey Green & Loosley Row Millennium Hall Management Committee, although opinions expressed in comment or contribution do not necessarily represent the collective view of that committee.

Our aim is to mirror the mark that the Village Hall makes upon our community, to publish the activities of all Village organisations, and to provide a forum so that the rights, the wrongs, the well-being of village life can be aired.

News from all the Village clubs, societies, churches and school, stories of local interest and entries for the Village Diary are always welcome. In addition, any suggestions for improving Hallmark.

VILLAGE HALL EXECUTIVE COMMITTEE

Clive Hodgton (Chair), Lee Harte (Treasurer), Rachel Panter (Vice-Chair), Chris Agate (Secretary), Karen Hodgton, Betty Tyler, Norman Tyler

VILLAGE HALL BOOKINGS

☎ CLIVE OR KAREN on 01844 274254 (Answering service)

EDITOR

✉ Norman Tyler, 5 Woodfield, Lacey Green, Bucks HP27 OQQ (2/3rds down Woodfield, on the left)
☎ 01844 344606 (with answering service)
Email norman@tyler333.fsnet.co.uk

ADVERTISING MANAGER

✉ Chris Baker, "Woodpeckers", Kiln Lane, Lacey Green, Bucks HP27 OPT (past the pond on the left)
☎ 01844 275442

**The Winter Hallmark will be published in November
– closing date for copy is October 17th**

Chairman's Report

Autumn 2005



Welcome to the autumn edition of Hallmark. Hopefully we will all be enjoying the promised summer sunshine or better still a well earned holiday.

I would like to thank everyone who attended the Strawberry Tea and a big thank you to Mr and Mrs Johnson for allowing us to use their garden. As always the ladies worked very hard to provide homemade cakes and a delicious tea - they are all very much appreciated. I was very pleased to see the Horticultural Society Stall there. I hope they did well and I would like to see more local organisations represented at the Strawberry Tea in the future.

You will probably have seen our new notice board outside the Village Hall. If you have any local information, please bring a poster into the shop and we will be pleased to put it up, free of charge of course. Equally, keep looking as you will find lots of information regarding events in the Village Hall and most other Village news. Sorry, but we do not put any commercial adverts into the board

The Post Office (sorry to keep on about it) continues to struggle, emergency meetings have been held in the hope that we can keep it. The opening hours have now been changed to 9a.m. to 12 (noon) on Mondays and Thursdays, in an attempt to attract more "Mums on the School Run". When everyone was asked in the local survey recently, the Post Office service was greatly

requested. Unfortunately it is not being supported enough and we are in danger of losing it forever.

The Village Hall committee and I would like to thank Fiona Insley for the many hours of pleasure that she and Cher Mole have provided to the under 5's music group. Sadly Jingle Tots has had its last jingle and unfortunately, due to family commitments, Fiona has decided to call it a day, we all wish her the very best in the future.

Have a great summer - enjoy all the local amenities, there's lots to see and do in our own small community - The Maize Maze, The Windmill, Tennis, Cricket, beautiful walks, and of course a long lazy lunch in any of our great local pubs!

Clive Hodghton, Chairman, Village Hall

From the Editor



We have some controversial content this time – some people think we don't have enough. One controversy started with an anonymous

postcard saying some new houses are destroying the heart of the village – see page 24. Others relate to excrement endangering children's lives. I'm contributing some later in this piece. Do you have any thoughts on these subjects?

We also have an interesting article on pages 22 & 23 on repertory theatre, including local, of earlier times by Brian Panter. He has wide experience of this world as a professional actor and is currently deeply involved in Lacey Green Productions. His new book, "A Cry of Players", related to the theatrical world, is now on sale in Princes Risborough bookshop. He is a member of Windmill Artists and our cover artist this year.

We're very grateful to Ray Hewinson for compiling his third crossword for us, comprising both local and general subjects – and again to Jill Baker for typing it. See page 25

On pages 37 & 38 are summarised the results of a truly democratic consultation of our villagers, painstakingly carried out by our local Parish, District and County

Councillors – and others. Our voting on a wide variety of issues makes very interesting reading. The report, by Tony Molesworth, is headed "Lacey Green Community Planning Group".

It now remains for our District and County Councils to act accordingly. The painfully long-standing inaction regarding problems and dangers of parking near the school and of the Woodway/A4010 junction, as examples, may have discouraged some people from bothering to complete their questionnaires, I fear.

Unfortunately, rural Councillors appear to be outvoted on rural planning matters. Overall, WDC have proved themselves both incompetent and uninterested in their duty to protect Green Belt areas and Areas of Outstanding Natural Beauty. It has been suggested that we rural dwellers should withhold the percentage of Council Tax that relates to WDC Planning costs until they perform satisfactorily. Something has to be done. Oh, for the previous Wycombe Rural District Council!

Our local Councillors are showing our national party politicians what real democracy means - "a system of government by the whole population,...", according to my Oxford dictionaries. Our national government has not sought the views of its whole population on any issue in the last 3 decades! The EU has never done it in its half century! If only our PMs, MPs and MEPs were half as democratic as our local councillors!

Norman Tyler, Editor

On the Farm

One of my earliest recollections is of what was such a rare occurrence that it has stayed vividly in my mind. We lived in an isolated valley where I could freely roam on my father's land. But this was a plane roaring down the valley and flying so low that it sent me diving for the ground. It was gone in a few seconds but it was the first time I realised that all might not be as usual in my secure little world.

Then I learned that a bomb had dropped in the next valley, where the food depot was. My uncle was a watchman there, so I didn't think having a food depot was strange, but the bomb blew a hole in a field and I thought it was an odd thing to do. I heard people saying it was probably a mistake and should have been for a town in the Midlands. All very weird.

It was just beyond that field, part way up Smalldean Lane that the prisoner-of-war camp was. My father didn't have p-o-w's working for him but I remember the land army girls. Some stayed on and married local men after the war, so we kept in touch with them.

John's parents, Dick and Hilda, were farming Stocken Farm and the prisoners-of-war were brought to work and picked up at five o'clock or so. They brought their packed lunches, which consisted of mouldy bread, literally blue. They would ask to work overtime, having got to know that Hilda would cook them some supper. Then Dick would take them back in his car. Farmers had a small allocation of petrol which made this possible. It was his first car, a Vauxhall, which he had bought secondhand for £140.

At first the p-o-w's cost the farmers nothing. There was a bit of an uproar when later they had to pay the government something for them. John doesn't know if the men got anything. They were pleased to be given any old sacks which they pulled the threads apart and plaited them up into slippers to sell. A lot of people bought them. They also made wooden toys, decorating them with burnt match patterns, pecking hens and swinging acrobats, quite beautiful. They could get cigarettes, maybe at the camp, but they were not allowed to buy food. What they most wanted was fresh bread. Sidney Janes was still at the bakehouse, on the corner of Goodacres Lane, so daily loaves were to be had by one and all. All except the p-o-w's. They would give a bit of money to the children who would buy some for them.

It seems a strange thing that bread was not rationed during the war when so many things were virtually unobtainable. Then it came on ration after the war. It may be forgotten what a long time after the war that rationing continued. I remember counting ration coupons at my parents' greengrocer and fruiterer's shop when I was certainly considered old enough to work, cutting them out of the books as customers did what shopping they could.

A party of Italian p-o-w's were brought to Wood's Wood down Highwood Bottom to cut trees for timber. They wanted the boys to get them a pump for a football so they could have a game. A most enticing smell of chips clinched the matter, a deal was struck and the boys shared the most fantastic chips ever cooked. None have ever tasted better.

Food figures highly on John's memory list. The continuous spam and fruit cocktail served up at school. He probably never realised how difficult it was to come by. And the pork. Farmers were allowed to kill two pigs a year. Presumably the powers that be realised they would in any case so they might as well look good by giving a concession. The result was that these pigs were raised just as most households did for centuries past. They were killed when they were very big and fat and shared out. There were no deep freezes and maybe the skill of preserving them well had been lost but John just recalls "rancid and horrible" and he would not eat it. But the farm was lucky. They had eggs and milk and a big vegetable garden and you can go a long way on those.

The RAF farmed the fields either side of the road beyond the Speen/Smalldean Lane crossroads. The right-hand side has now got a water reservoir under it and is considerably higher, but then vegetables were grown there. The land army girls and WAAFs were to be seen on their knees weeding by hand. Farmers were exempt from call up for home-grown food was absolutely vital but they could go voluntarily. All sorts of people wanted to do their bit. A party of bank managers came to help. Stuck for a suitable job, Dick set them to clean out an old dew pond. It has never held water since! They meant well!

Dick employed three men. The work was much more labour intensive and at haymaking and harvest, locals would come at a minute's notice to make up the

necessary gangs. They were not all good team workers, but they knew the work and many were most effective. The others? Well, characters make life interesting and they were there when they were needed; they were all part of the village tradition. It was a time before the combine harvester. Corn was cut and tied into sheaves by a binder pulled by a horse. These were propped up to dry in shocks (or stooks). Oats were cut while still quite green and had to be shocked up for a minimum of three church bells. Thus the stems could dry as useful fodder while the heads ripened for grain. After pitching them up onto a wagon, they were taken home and built into ricks. When it was time to sell, the threshing contractor came. During the war, he took to employing land army girls to make up his gang. The village boys loved the threshing. The Ministry insisted that wire netting was put round the ricks to stop the rats escaping so they could be killed - great sport, apparently.

It was just before D-Day that about a hundred acres was taken for an airfield for "Bomber" Harris. This was to enable him to get quickly to Northholt to meet with Eisenhower, who was at Ruislip. The RAF had billeted families here. One family per room. Embarrassing for them to find their farmer host had lost the best part of his farm overnight. It says much for all concerned that they kept in touch long after the war ended.

This afternoon, we watched the commemorative celebration of sixty years since the end of World War 2. Made us realise these years were part of our lifetime. So this is a little offering to share with those who were not here during the war of what our farm village life was like. And it really doesn't seem all that long ago.

Joan West

LOOSLEY ROW & LACEY GREEN WI

present

THE ANNUAL VILLAGE QUIZ

In The Millennium Hall

WEDNESDAY 19 OCTOBER At 7.30 p.m.

Teams of 4 Entry fee £5 per team, which includes tea or coffee

RAFFLE All proceeds in aid of Village Hall Funds

**Why not enter a team and pit your wits against
other village organisations/families
and have a fun evening?**

To enter, call Jean on 01844 346469

Happy Wanderers Walking Club

Short walks 2nd Wednesdays 10.30am Village Hall car park

SHORT WALK THROUGH BLUEBELLS

Wed 11 May 2005

Shirley Billsborough led us through the bluebells of Park Wood (our side of Bradenham Wood Lane)



▲ knowing we had plenty of bluebells flowering at the time,

so we took time to admire them ▲



and other flowers ▲ ,
to have a rest – or two ▼

with times for chats ▲ ,
and to look back and admire the views ▼



Why not join us? These walks of around 3 miles are less demanding than our “normal” walks of 5-6 miles.

Loosley Row & Lacey Green Horticultural Society

Over The Garden Fence

All things that love the sun are out of doors;

The sky rejoices in the morning's birth

Wordsworth

This piece is written on a scorching mid July day. I hope the above words are as appropriate when you read it!

At the A G M in March the Committee were re-elected, with the exception of Treasurer Jim Brudenell, who did not stand as he is moving away. Jim has been a valued member of the Committee and we shall miss him. However we were fortunate to recruit two new members, John Burnett and Laura Chapman, whose enthusiasm is already evident. John becomes Treasurer, with Laura assisting him.

The business of the AGM was completed in 20 minutes and we moved on to a fascinating talk by Dr John Wilson about Cooges Manor Farm Museum at Witney. He produced an array of fierce implements used in Victorian animal husbandry.

At our May meeting we were entertained by a talk on bees, not confined to bee keeping, by Mr John Crick, who brought along a display hive.



Our annual gardening competition for the children at St John's School has just been completed. This year's task was to design and create a garden in a seed tray. The children produced a good number of entries which were all well thought out and executed. The standard was very high and we had great difficulty in selecting winners. We finally decided to award first prize to Daniel Van Reysen, second prize to Sophie Brownlee,

third to Georgia Betteridge and a Highly Commended to Megan Sanderson. We expressed our sincere congratulations to all of the entrants. Diarmuid Gavin has some competition coming!



We had a plant stall at the Strawberry Tea afternoon and we hope that this contributed in a small way to a very enjoyable event.

By the time that you read this we shall have had our July meeting, a talk by Mr & Mrs Graham Hollingsworth on Growing and Showing Sweet Peas.

The annual Flower and Produce Show is on Saturday, 3rd September, in the Millennium Village Hall. Schedules were distributed with the last Hallmark and further copies are available from the Show Secretary, David Fitt on 344914, or me on 342636, or any other Committee member. Entry is "on the day", just turn up with your entries in time to set them out by 1.30 pm. There are classes for flowers, vegetables, fruit and domestic produce so that there are opportunities for everyone to have a go. If you have not entered before please try your luck, you may surprise yourself. And if you are really bashful, it is only the names of the winning entrants that are revealed.

It is sad to have to report that some one has helped themselves to the soft fruit from the allotments at Westlands.

On Wednesday 21st September at 8.00 in the Village Hall we have an illustrated talk on "Some Gardens of The National Trust". You do not have to be a member of the Society to attend and I look forward to seeing some new faces.

Terry Fendom. Chairman

Lacey Green Productions

THE REAL INSPECTOR HOUND by Tom Stoppard

Fri 20th & Sat 21st May

WITH 3-COURSE MEAL prepared by THE GOOD COOK CO - our own RACHEL PANTER

Looking around the audience, it's clear the fame of our amateur theatrical group is spreading geographically. Deservedly so. What's more, LGP have given about £27,000 to national and local charities to date!

The action took place on the stage of a theatre and the adjacent critics box. It parodied the relationship between theatre critics. The play within a play parodied Agatha Christie's *The Mousetrap*, itself a parody of whodunits. Tom Stoppard insisted we shouldn't take the play too seriously – and we didn't.



From left to right, Ray Gosling, Mari Cheesman, Lynda Moorcroft, Mo Bedder, Peter Brookhouse, then in the critics box, James Moorcroft and Charles Leigh-Dugmore

The Directors were Brian Panter & Val Brookhouse, both very experienced actors in their own right.

As our table numbers were called out, we were invited to collect our food from the buffet laid out in the separate room across the entrance hall. Just lick your lips while imagining experiencing the dishes – far tastier than one normally can expect for such a large gathering of people. Before Act 1, we enjoyed Rachel's delicious light Summer Melons & Parma Ham with a Confit of Rhubarb & Ginger. Before Act 2 we made our choice from equally inspired tastes of Layered Vegetable Cheesecake with a Parmesan Biscuit Base, a Marinated Mediterranean Chicken Salad with Roasted Peppers & Olives and/or Spiced Beef with a Summer Herb Sauce. These were accompanied by Potato Salad with Smoked Salmon & Cured Herring, a Mixed Leaf Salad with Lime & Caper Dressing, Summer Vegetable Couscous with Roasted Cherry Tomatoes and/or Carrot, Cumin & Mustard Seed Salad. Before Act 3 there was an interval during which we could choose from Fresh Mango Trifle, Anticipating Death By Chocolate and Strawberry Pavlova.



Ray Gosling and John Titchen in the critics box

Where else could you find such a delicious selection AND so enjoyable a theatre show in the same building? All packed into one evening. Certainly not in theatres I've been to in London, Oxford or Windsor. In those places you have to travel 30 to 80 minutes each way, eat elsewhere and then get to the theatre. Our thanks to all who took part, including, of course, the people in charge of lighting and sound, selling the tickets etc etc.

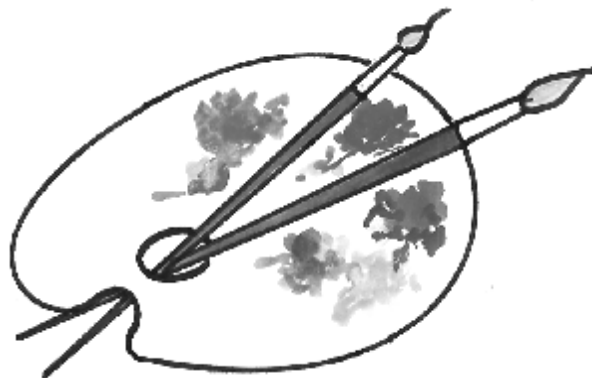
WINDMILL ARTISTS

*INVITE YOU TO A BISTRO AND
ART EXHIBITION*

*ON NOV 12th 10.30am to 4pm
AT LACEY GREEN VILLAGE HALL*

*AN EXHIBITION AND SALE OF
PAINTINGS BY ARTISTS LIVING
IN THE VICINITY OF LACEY
GREEN WINDMILL*

*ENJOY AN ALL DAY BISTRO
MORNING COFFEE, LUNCHESES, AFTERNOON TEAS
ALL DAY BAR*



Hughenden Art Group

An Invitation to Amateur Artists

Hughenden Art Group provides an opportunity for amateur artists to meet and paint together on Monday and Friday evenings throughout the year at Hughenden Village Hall. The group offers a mix of informal painting together sessions and tutored evenings. Tutored evenings cover a variety of topics from painting techniques (e.g. mixing greens), subject specials (flowers, landscapes, etc), and slide shows.

There are also a number of whole day, normally Saturday, meetings held throughout the year. Members are also

encouraged to join out-door painting trips to local places of interest, visits to galleries and occasional social outings.

A small library of books and art techniques video tapes covering the most commonly used mediums are kept at the hall and are available to members. The group holds an annual exhibition and sale of members' work at the hall.

This is an adult mixed ability group that welcomes new members, so whatever level of skill or medium used, new members are most welcome. To find out more please contact:

- Barry Forrest 01844 347190 (of Loosley Row)
- Jill Graves 01494 563813

West Wycombe Decorative & Fine Arts Society

30th Anniversary

Saturday 24th & Sunday 25th September

Exhibition of Members' Arts & Crafts

Lacey Green Millennium Hall

2 – 4pm

Admission Free

81st Over-60s Club

CANAL BOAT OUTING on Thursday 26th May

First Tuesdays 2pm at Village Hall



25 members and 20 guests were taken by coach to board the boat at Marsworth, just past Tring, for a 2¼ hour cruise along the Grand Union Canal.



The day out was organised by Carole Knight (right-most in front row) and Ursula Glyn-Jones, next left).



We enjoyed the sight of a Mum, Dad and seven signets



Some stayed seated and looked through the windows whilst others moved around for chats or to help others



Con Baker (on the left), proud to be our village's oldest resident, was nevertheless fit enough to spend a good part of the journey standing at the bow of the boat, where the best views were to be seen.



By the time we disembarked and got back on the coach, everyone had enjoyed a relaxed chat and a tasty meal served by waitresses, with drinks from the bar.

On our return journey, we stopped at World's End Nurseries, near Wendover, with plenty of time to walk around and spend our money. Even also time for yet another drink. The obvious enjoyment to be had was a good reward for the hard work and planning done by all the organisers and helpers.

Around Our Local Pubs



We are now into Summer and the warm weather is upon us in dribs and drabs. Aunt Sally is in full swing and we are doing fairly well.

Well done to the Black Horse 5-a-side for coming up runners up in the Sports Day held at Lacey Green

Sports Club.

Lisa was 40 and had a fantastic party at Lacey Green Village Hall. I think everybody had a good time and some left with that feeling of bad head syndrome.

Unfortunately, we didn't have any response to the burglary, but never mind, the CVTV is working well. We did also have another small burglary, which I thought I would mention as I am just in shock over it. It was a Saturday lunch time, normal people in for meals. My bar staff came into the kitchen and said "Lynne what have you done to the small pictures in the ladies toilet". I replied "nothing". Thinking this was an odd comment, I went and had a look. I couldn't believe my eyes. On the window sill in the ladies cubicle I had three small pictures of Pears Soap Children, they were only postcards put into frames. Some nice lady had taken great pleasure in sitting there, undoing all the picture frames, stealing the pictures and leaving the old frames behind. She was even nice enough to put the frames back in the correct place.

What is this world coming to? If she had asked, she could have had them. I hope that when she puts them on EBay they are worth nothing. Just a bit of advice to everybody - nowhere is safe from a thief.

I am running a Car Boot Sale in The Black Horse garden and car park on Saturday September 3rd. 2pm till 5pm. Set up pitches from 1pm. If you would like a pitch, please phone me on 01844 345195. Pitches are £5 each. Proceeds to go to cancer research. Give us a phone.

We still need teams to join us for our fun quiz. This is held on the last Sunday of the month. Come and join in the fun. Please keep a look out for our A board notices regarding forthcoming events, i.e. BBQs.etc.

Lynne

Lacey Green Singers

Following the success of our Easter event with the West Wycombe Brass Band, Lacey Green Singers have been hard at work this summer term rehearsing for our Autumn concert, a selection of "Classic Choruses" from the world of opera and other great works. Please make a note of the date – Saturday 8 October at the Village Hall - and watch out for tickets on sale in September.

Sadly, we are bracing ourselves for the imminent loss of one of our most stalwart members, Colin Hobdell, who is planning to leave the area to be nearer to family. Both Colin and his wife, Barbara, have done a tremendous amount for the choir – Colin as librarian and of course singing tenor (a rare species) and Barbara has designed and printed our posters and programmes, sold tickets and helped with refreshments at concerts for many years. The choir will miss them both very much and we would all like to wish them every happiness in their new home.

Lacey Green Singers are always pleased to welcome new members, particularly men, to add to our numbers. The emphasis is on singing for enjoyment and we attempt pieces of all kinds. There are no auditions, and you do not need to be able to read music. We rehearse at 8pm very Thursday evening in term time in St John's School Hall. If want to find out more, get in touch with Rosemary Mortham (01844 345863) or Jane Brown (01844 346071) or just turn up one evening and give us a try.

Jane Brown

Men Needed !

Lacey Green Singers are in need of men, particularly tenors, to join our choir. We cover a wide range of music, from classical to show tunes and pop – and you don't have to be able to read music!

We rehearse on Thursday evenings between 8 and 10pm in Lacey Green. All ages welcome. Please call Cathie (01494 463191) or Jane (01844 346071) for more information

The Windmill WI

First Wednesdays 7.45pm Village Hall

At our May meeting, we discussed and voted on the resolutions to be put before the NFWI Annual General Meeting in June. After the serious side of the meeting, we indulged ourselves with some cheese tasting washed down with a glass of wine!

Several members attended the Group Meeting at Flackwell Heath. The speakers, Jean Purdy and her husband, were very entertaining and took us back to 'The Good Old Days' with snippets from their early careers in show business. It was very amusing but we were a little disappointed as apparently Jean is a champion fire-eater and we would like to have had a demonstration!

In May, two of our members enjoyed an excellent WI 'Celebration Lunch' at Aylesbury Football Stadium. After a very tasty meal, Tricia Stewart, the Calendar Girls "Miss October", treated them to a fascinating and entertaining talk. They heard from Tricia how the idea of the 'nude' calendar first came about, how the photographs were taken and how they dealt with the media coverage. She shared with her audience experiences of the many funny moments and the sad, about the highs and occasional lows of fame. These WI members sold over 300,000 calendars and raised over £6000,000 for leukaemia research.

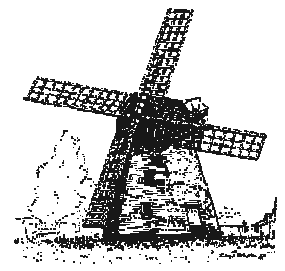
Margaret Gray once again led our annual ramble, taking us around Speen and then back to The Black Horse for a much needed drink and supper.

The venue of our Summer Supper was this year the Sports Club - the weather was perfect - we were all able to eat 'alfresco' in the evening sun. The food, prepared by the Committee, was excellent and it was altogether a very pleasant evening.

Our latest speaker, Mr Brian Fisher, gave us a very humorous and informative talk on 'Pruning and Propagation'. I had never considered this aspect of gardening to be particularly amusing but Mr Fisher certainly made it so. I think, amongst the laughter, we did pick up one or two useful hints.

We have several events to look forward to - our August meeting (3rd) when the speaker will be Jane Dunsterville with her talk entitled 'Creative Ideas with Colours'; a trip to Frogmore House and Eton College; and then our Birthday Meeting in September (7th) with 'Memories of the 20th Century'. Looking further ahead,

please make a note of the date of our biennial Jumble Sale - **SATURDAY, 1ST OCTOBER**. If you have any jumble you wish to donate, please bring it along to the Village Hall between 10am and 12 noon and then please come back again at 2pm and buy it all back again!



As you can see, we have an interesting and fun time with the WI - come along and see if you like us - you will be made very welcome.

Daphne Williams

News of Daphne Spurry

Daphne is still remembered particularly for her hospitality, with her husband John, to village functions at Speen Farm's Home of Rest for Horses, of which John was in charge. Amongst her other work for our village was at the 81st Over 60s Club.

Ever since retiring to her present home at Sherborne in Dorset, we have posted Hallmark at her request so she can keep up with what's happening here. Daphne moved in 1997 when her husband, John, died. Her latest letter, enclosing her usual over-generous donation to Hallmark's costs, says she recognises fewer and fewer of the names mentioned. She says she leads a relatively quiet life and constantly remembers her happy times here. She keeps in touch with some old friends - and saw Mike and Margaret Davis (who retired to Swanage) only last week.

She would be delighted to see anyone she knows if they are in her area - on the A30 just before Yeovil and very near the A303 route to the West Country.

If you'd like to drop her a line or 'phone her, Daphne lives at Keld Cottage, Back Lane, Sherborne, Dorset DT9 3JE (01935 812689).

"Although man is already ninety percent water, the Prohibitionists are not yet satisfied"



Josh Billings

Of the issues affecting the villages recently there are three that are focusing peoples' attention. These are:

Refuse and Waste collection Speeding Traffic Planning

Green Waste collections have been introduced as part of an extended trial into parts of Loosely Row. From the emails and telephone calls I have received I am very much aware that whilst most accept the principle of the need to reduce landfill and recycle more materials the way it is being done is causing problems. I am fully supportive of this view. The response to the Community Planning Questionnaire on this matter was split 50/50 on support for a two weekly scheme. This may be because those who already compost green waste took the view that there was little extra they could do to contribute to a reduction in landfill and so the scheme represented a reduction in service. There was however majority support of reintroduction of kerbside glass and plastic collection.

In response to this I will be asking that the Council attend a public review meeting of Community Planning Group's Survey so that issues can be discussed and possible solutions found. In the mean time if you have problems associated with refuse and waste collections please let me know so that I can progress them with the Council.

Speeding Traffic still remains a top issue. I have been pressing for the final stage of the Speed Limit Review to be undertaken so that the implementation process can start. The response from County Council officers suggests that the formal consultation on the proposed changes for our area (area 5) will now be in late August early September with implementation in early 2006. I would apologise for this further slippage as I know how important this is to the Parish.

It is however difficult to see how this can be improved upon, as the officers have to contend with several areas simultaneously.

Finally I know there has been concern about **Planning issues** related to the house building taking place in Kiln Lane and other infill sites. However these sites have been judged suitable under the policies set out in the Local Plan and Government Planning Guidance. The criterion for judging the suitability of applications is of concern and recent Government Guidance (PPG3) has meant that increased densities have been able to be considered. It is for these reasons that I have encouraged the development of a Village Design Statement (VDS) that, whilst not anti-development, does set out the characteristics of both villages and seeks to preserve the best of these. This VDS provides many recommendations such as the retention of hedges and building in accordance with the Chilterns Design Guide which, when adopted by the Council as Supplementary Planning Guidance, will offer some protection against inappropriate development. This document should shortly be published and represents three years of hard work for the group. I would like to thank all those who have given their time to complete the document that I hope will make a difference.

For those who are planning Community Projects this year, I should be in a position to make further grants from both District and County funds allocated to my Ward / Division. If you have a project then please let me know and I will do what I can to help.

Paul Rogerson
County and District Councillor
01494 488315

Parish Council Notes

Communications

Just in case you are thinking that there has been a bloodless coup on the Parish Council, I must clear up the confusion over the Council notes in the last edition of Hallmark. Each year the Council holds an annual meeting where the Chairman, Don White, gives a report on the events of the previous twelve months. This meeting is open to the public, as are all Parish Council meetings. For those residents who are not able to come to the meeting - or prefer not to fight for a seat in the meeting room, the Chairman's comments are reported in Hallmark. It fell to my colleague

Mrs. Catherine Davies to arrange this and, due to a misunderstanding, her name was incorrectly shown.

Having cleared that up, can I keep on the question of communication and comment on the latest flood of news letters which have been delivered to us recently. I can assure you that the Parish Council has no intention of issuing its own newsletter, or presenting awards to its staff for doing what they are paid to do, as seems to be the growing practice in the County and District Councils. The newsletters are mostly repetitive, growing in size and becoming glossier with each issue. The latest is filled with portraits of elected members of the various districts. Is it only a matter of time before portrait banners are hung on the façade of council offices – does that remind you of

anything!? I believe it is time that our district and county councillors reconsider these ego trips which must represent a growing impact on our rate bills.

Roads

The implementation of new speed limits in the village is slowly materialising. We are now told that, after a final process of consultation, it is possible that new signs could be installed by the end of the year. Once the speed limits are introduced, it becomes possible to install other road calming measures - humps, chicanes, etc. – though these would have to be paid for by the Parish. As one traffic inspector is reported as saying, we already have one effective traffic calming device in Main Road, the only drawback is that it only operates twice a day during term time.

A more serious road matter concerns the junction of Woodway at the Culverton cross roads, which keeps moving up and down the list of priorities. There have been three serious accidents in the last few weeks at this junction. I

think it would help if local residents would decide if their concerns are for safety or the environment. I know which I prefer.

Methodist Church

You will have seen the notice which has appeared at the Methodist Church offering the site for sale by sealed tender. The Parish Council is watching developments closely and is of the opinion that, if possible, the site should be retained for community use. It is also our intention that the burial ground should remain open and the Parish Council have offered to fund its maintenance and continuing use. The situation may become clearer following the tender process and decisions on the part of the Methodist Church authorities.

In closing, I must make it clear that these comments are mine and do not necessarily represent those of the Parish Council or its members.

Peter Pilkington

Obituary

JOAN FLORENCE BIGGS

Joan was born 20th October 1922 at The Stret, Loosley Row, eldest daughter of Ralph and Jessie Biggs.

She moved to Lacey Green in her early years and lived at the family home, Wayside Cottage, for most of her life until her move 4 years ago to Princes Risborough.

After leaving Lacey Green School, Joan went into service first at Plantation Cottage, Loosley Row, then at Hillcrest, Lacey Green.

During the war years, Joan worked for a Company which was taken over to make aeroplane propellers. During the early part of the conflict, her evenings were spent with a friend looking out for enemy parachutes at Small Dean Lane.

After the war, she worked for Cheverton & Laidler, where she stayed until her retirement.

Joan loved chapel, Loosley Row Baptist and Lacey Green Methodist until these closed. After moving to her flat in Princes Risborough, she regularly attended Princes Risborough Methodist Chapel.

She enjoyed her social clubs, the Lacey Green 81st Club and Princes Risborough Evergreens, quizzes, reading and crosswords.

Until a few weeks before her passing, she had a very active life.

P.I.

Letter to the Editor

Dear Editor,

I would like to thank the organisers of the recent Sports Club Fun Day for all their hard work. For many families the main attraction of the day, is a *friendly* 5-a-side football tournament. Unfortunately, this year, it was marred by some ugly scenes.

In one match a player punched someone in the chest, smashed a local doctor's glasses into his face and made a very late tackle causing a serious knee injury, which has resulted in a surgical referral and an inability to work. All this in front of the children.

I understand that these teams feel competitive and football is a contact sport but not once did the player apologise for the injuries he inflicted. I therefore assume these actions were deliberate! Surely this is totally unacceptable behaviour for a *village fun day*. The rest of his team played with skill and did not resort to the same tactics.

I do hope that the friendly nature of this 5-a-side tournament can be emphasised to all team members next time.

**Sender's name, address
& 'phone number supplied**

On Monday Next



Fifty years ago there was a Repertory Theatre in High Wycombe presenting a different play each Monday night, and playing for a week. It was one of scores of similar companies throughout the land. There was even one for a time in Beaconsfield. Not all companies were weekly; those

in the top rank (Birmingham, the Oxford Playhouse and a dozen or so others) had the luxury of two weeks rehearsal. The usual rehearsal period in the West End in those days was three to three and a half weeks. It is, however, weekly Rep that endures in theatrical lore. Standards varied: it has to be admitted that some of the worst companies would not compare favourably with a really first class amateur company of today, but it was superb training in the craft of acting, for in my opinion acting is largely a craft - only occasionally is it inspired by art, and these are the supreme moments in the theatre.

In weekly Repertory you learned by doing, rather than by talking about it. You learned how to cope with almost any emergency; in fact, it might be said that you worked in a constant state of emergency. Most of the theatrical fare on offer was past or current West End plays, but most companies that aspired to greater artistic endeavour would put on the occasional 'good play'. This would then be subsidised by so-called 'pot boilers'. Agatha Christie never failed to put bums on seats. There was always a hard core of audience - some people booked the same seat every week throughout the season. There were also supporter's clubs. Each leading actor had a following whose weekly expectations had to be lived up to. A staunch fan of one actress was heard to say: "I do like Ursula's acting - she's always the same". Scant tribute to someone striving to be a different character each week.

Rehearsal time was, of necessity, limited - mostly following a regular pattern. After Monday nights opening of the current piece the next play would be blocked the following morning. Act I was then rehearsed on Wednesday morning, and everyone was required to know it. Act II on Thursday; Act III on Friday. Run the whole play Saturday morning. Some companies had Saturday matinees.

Actors were expected to have, in their wardrobe, two suits and a dinner jacket. Only period costume or uniform was hired. You never threw any clothes away. The ladies were always very hard pressed to ring the changes. All this was achieved on low pay and, in the early fifties, clothes rationing. A good wardrobe often meant you got the job. On Sundays, actors polished their lines, and stage management struggled with props and scenery. The scenic artist was always hard-pressed, and it was not unusual to find him painting just before curtain up.

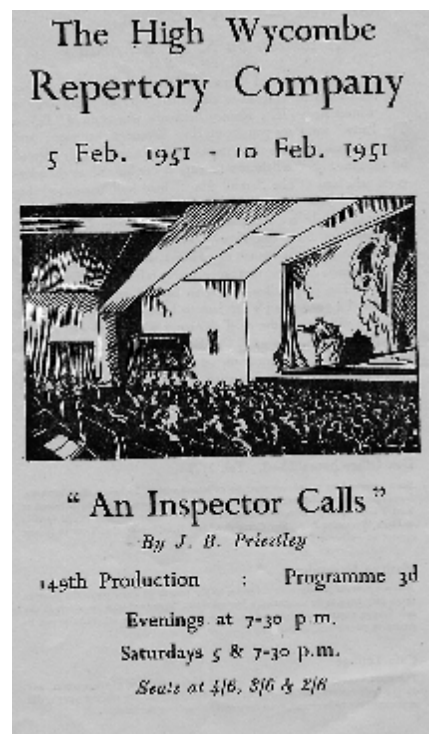
Actors worked hard, but stage management worked harder. Assistant stage managers would be sent to beg or borrow furniture and props from local sources in return for a mention in the programme, and on top of these tasks they were required to play small parts as well.

Most seaside towns had summer season companies doing popular plays to please the holiday crowds. Despite the punishing schedule, somehow, when the sun shone, time was spent on the beach in the afternoons. The script would be taken - ostensibly to learn lines - but ignored if you managed to get one of the girls to yourself. Consequently much midnight oil had to be burned to meet the morrow's reckoning.

In the middle fifties there was a dramatic change in the fortune of the repertory movement.

Television was given a tremendous boost by the advent of Commercial T.V. Suddenly the Reps found it hard to get experienced leading players as none wanted to commit themselves to a season out of

London while the new opportunities for jobs were so promising. There was, moreover, a useful income to be had from commercials. In those days star names were



not attracted to adverts. The writer did the first Nescafé commercial - one day's work for fifty pounds, which was ten pounds more than my weekly salary in the play I was currently playing in in London. Thus, though repertory managed to meet the competition of cinema, television was too much for it.

Young actors of today have nothing like repertory to cut their teeth on, which makes them immensely dependent on directors - an overrated species it might be argued. Nowadays, much rehearsal time is spent in discussion,

and it's all taken very seriously. Even so, we still produce superb actors.

Repertory is perhaps too fondly remembered: it was hard work, poorly paid, and at times heartbreaking, especially for those who never got out of it. Some ageing leading players could be hideously cruel to the young on stage. Perhaps distance does, after all, lend enchantment.

Brian Panter

FOOTNOTE The High Wycombe Repertory Company was housed in a building with the clock tower, backing onto the railway arches, near the old bus station and the cattle market – now Sainsbury's.

Strawberry Tea

SUNDAY 26th JUNE

West Wycombe Brass Band returned to play for this year's Strawberry Tea in Paul and Trish Johnstone's delightful spacious garden at Woodbyne Farm in Main Road, Lacey Green. We are most grateful to them and others in the past who allow us to use their lovely gardens.

How lucky we were to enjoy such a pleasant relaxing afternoon in comfortably sunny weather listening to live music whilst partaking of strawberries and cream, scones and home-made cakes with a cup of tea. This is an occasion when villagers can get together as

they did in the past. We just need everyone's support to keep these events going

Most participants were villagers with relatives and friends. There were even some members of the walking club, relaxing after having walked 6 miles in the morning.

Very many thanks to those who so generously donated cakes and their time. What would we do without them?

Betty Tyler



These two girls with the garden swing had earlier been folding the raffle tickets.
That's the true spirit of a village affair, isn't it?

'Why Have you destroyed the Heart of your Village?'
Lacey Green and Lousley Row Village - was
'unique' - a beautiful Chiltern village - a delight
to behold. - Now sadly it is 'fast in decline'
down the slippery slope to destruction. Ugly modern
brick houses - such as the 'eye sores' newly built
at Kilt Lane. What a great shame, that the powers
that be - did not insist on traditional flint & brick.
Of course money talks - and those with vested
interest - have their connections'. At least try and
'save' the boundary hedges rows and large trees.
Or preferably knock those ugly new houses down!

An Anonymous Letter Received

The letter printed above has just been received by the Village Hall Committee and I, as Chairman, have the pleasure in issuing our reply.

Quite simply, the blatant ignorance contained in it is nothing but outstanding. Why has the writer chosen us at the Village Hall - what have we done to deserve this? She obviously has absolutely no concept of where to direct her comments. Does she really believe that a Committee of VOLUNTEERS running the local Village Hall has anything whatsoever to do with the Planning and Building of houses over 100 yards away? And then finally to add insult to injury, by not signing it is just plain cowardice! I must admit that, given the nice handwriting, I assume it is from a woman, does anyone recognize the handwriting?

This letter has, of course, been copied and passed to the local Councillor and various other more suitable bodies, i.e.: Village Steering Group, Parish Council for their own reply in due course. After all this is where this sort of letter should have gone in the first place.

If anyone would like to write, or even speak to us regarding any topics they have regarding the Village Hall, please do so. We will act swiftly on your issues just as long as they are within our jurisdiction and, of course, related to the Village Hall.

Clive Hodghton
Chairman, LG&LRVH

Chernobyl Children's Life Line

Many thanks to all of you who donated prizes and supported our raffle in aid of Belarussian children. We raised the magnificent sum of £1,613!

The first prize of a hand-made luxury quilt was won by a Mrs Goodwin of Haddenham, the 2nd of an Indian bedspread by Mr Prideaux of Princes Risborough and the 3rd of a box of wine went to Mrs

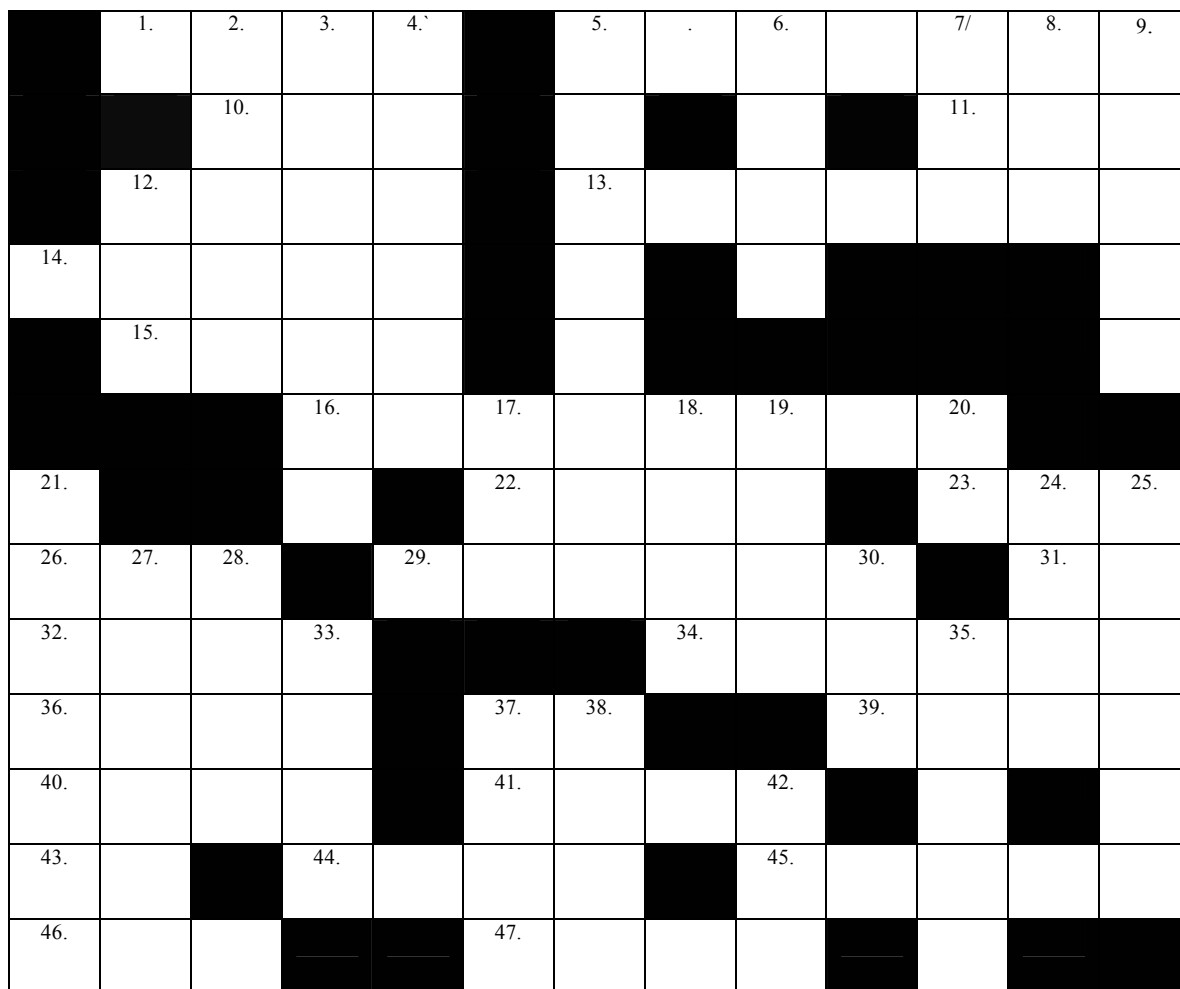
Sands of Stokenchurch. Of the other prizes, one went to each of Lacey Green, Loosley Row, Saunderton, Bledlow Ridge and West Wycombe, whilst three went to Bledlow, two to Radnage.

Another beautiful quilt has already been donated for our next raffle in 2006. Your custom is extremely well appreciated by the children.

Ann Smith (01844 345558)

CROSSWORD- general & local

by Ray Hewinson



CLUES (answers overleaf)

ACROSS

- 1 & 5 down
- 5.
- 10.
- 11 & 6 down
- 12.
- 13.
- 14.
- 15.
- 16.
- 22.
- 23.
- 26.
- 29+21 down
- 31
- 32.
- 34.
- 36.
- 37.
- 39.
- 40.
- 41.
- 43.
- 44.
- 45.
- 46.
- 47.

- Your local district councillor
- To emit radiation
- Single
- Contact for a local allotment
- Ornamental spheres
- The richest milk (4 & 3)
- Relative speeds we have to pay
- An Archer character – not able
- Manoeuvres at Widmore stables
- Cheat on a chequered board
- To stop or suppress
- Circuit
- A local historian and parish councillor
- An Australian State (abbreviation)
- Genus of trees
- Part of a sundial
- Time long past
- As good ... it gets
- A brave detergent
- A drop of liquid
- Slip about for part of the face
- An alternative to off
- A fruit
- A small tree born earlier
- An Australian State (abbreviation)
- Which ever way – you sit on it

DOWN

- 2.
- 3.
- 4.
- 5.
- 6.
- 7
- 8.
- 9.
- 12.
- 17.
- 18.
- 19
- 20.
- 21.
- 24.
- 26.
- 27.
- 28.
- 30.
- 33.
- 35.
- 37.
- 38.
- 42.

- Main artery
- Relaxes
- Not as great
- See 1 across
- See 11 across
- Suitable
- A Chinese ...ism
- Not full
- A sturdy English tree
- Before
- Lacey Green singers can provide one
- Related
- Example
- See 29 across
- Absent from the services
- Take a look at a male goose
- The origin of 12 down
- A prefix for enclosing
- Express grief
- Cotton fabric
- Unpredictable
- Exclamation of regret
- A male parent – especially at the stables
- Game ... and match

Andy's 'ints

Electrical work in your home

You may know that from 1st January this year new Building Regulations were introduced which directly affect electrical work carried out in your home. This particular section is called Part P. I have no doubt that the implications of this Regulation will be to substantially increase the cost of any work you have carried out in your home on an official basis.

This regulation covers all electrical work in your home but there are specific instances where the regulations are definitely applicable. Examples of these include:

- Installation of a new circuit
- Any electrical work in a kitchen
- Any electrical work in a bathroom or room containing a shower
- Any electrical work in the garden or garage
- Electrical work involving the installation of lights in the ceiling
- Any electrical work around a swimming pool or sauna
- Installation of electric under floor heating

If any of the above are to be undertaken, there are two methods of obtaining approval under the Regulations. Firstly, notifying the Local Building Control Authority before work commences and paying the appropriate fee – this is on a climbing scale and starts at about £120 for works costing up to £2000.

Under these circumstances you could carry out the work yourself – approval and certification is carried out by others. Secondly, by using what is termed a “competent person” who will carry out the work and certify that it complies with the IEE Regulations. To be a “competent person” it is not sufficient to be a qualified electrician - that person must also be certified and registered with one of five controlling bodies: BRE/ECA, BSI, ELECSA, NICEIC, NAPIT.

At the moment, precisely what is or is not covered by Part P is not totally defined. If you propose works in any of the above examples do seek advice. Work not in the above areas may be defined as Minor Works and may not require certification but whoever carries out the work is required to ensure that it complies with the IEE Regulations.

If that isn't enough, here's the nasty bit, if you get someone in to install an additional socket or one downlighter, they are required to check that the whole of the circuit modified complies with the current IEE Regulations. This will add considerable time implications to the original task and a written record of all test results must be left with you, the customer. This will consequently cost more money even without any remedial works that are found to be required.

To put this into perspective, I estimate that the wiring installations of more than 95% of homes do not comply with these regulations.

Andrew Stone

Answers to Crossword on previous page

ACROSS

- 1 & 5 down Paul Rogerson
- 5. Radiate
- 10. One
- 11 & 6 down Pam Dell
- 12. Orbs
- 13. Gold Top
- 14. Rates
- 15. Kane
- 16. Dressage
- 22. Rook
- 23. Gag
- 26. Lap
- 29 & 21 Dennis Claydon

- 31. W.A.
- 32. Acer
- 34. Gnomon
- 36. Yore
- 37. As
- 39. Bold
- 40. Drip
- 41. Lips
- 43. On
- 44. Pear
- 45. Elder
- 46. N.S.W.
- 47. Seat

DOWN

- 2. Aorta
- 3. Unbends
- 4. Lesser
- 5. Rogerson
- 6. Dell
- 7. Apt
- 8. Tao
- 9. Empty
- 12. Oak
- 17. Ere
- 18. Song
- 19. Akin
- 21. Claydon
- 24. AWOL
- 25. Gander
- 27. Acorns
- 28. Peri
- 30. Sob
- 33. Repp
- 35. Moody
- 37. Alas
- 38. Sire
- 42. Set

Lacey Green & Loosley Row Sports & Social Club

Tennis Section

It's probably been a couple of years since Hallmark included any tennis news - probably because we haven't submitted anything for about twenty-four months. With the summer months in full swing I thought, as new Club Chairman, that I would acquaint you with what's been happening.

We have a new Chairman and Executive Committee. Sadly we have lost our popular coach, Jenny, to pastures new...namely motherhood. She will be back with us next Easter. In the meantime Jenny has managed to find cover until then. Steve Bell has recently returned from an "around the world trip" and is already known to some of you. As yet I am without the finer details but I am confident that he will be providing individual and group lessons as well as maintaining the club-school link.

Our teams have had their ups and downs in terms of league successes. Two seasons ago the Mens 1st team were promoted without playing a match. Last season, on showing our prowess, we were narrowly relegated. We are struggling this season to get a team out as a few of our past masters have defected to alternative sporting arenas.

The Ladies team have a healthy squad and have had some encouraging results. This is also true of the mixed teams.

The recent Sports Club Fun day was well attended and I do hope that it will encourage a few rusty old rackets to come out of the closet. Club nights are currently on Sundays from about 4pm onwards. I would like to take this opportunity to welcome new members to bolster our squads. Those members who have not yet returned their membership fees should do so as soon as possible. For membership details please contact our club secretary at Rose Cottage, Main Road, Lacey Green, HP27 0QU.

I look forward to seeing more of you at the courts in the near future. We have an Autumn tournament in early September. So keep your eyes and ears open for the dates.

G Biswas
Club Chairman

Excrement!

No, this is not about our cricketers' efforts. A much more serious matter has been brought to my attention. It has been reported that more and more people are walking dogs around and across the sports field. Worse! A dog has fouled the pre-school play area. I have been asked to point out yet again this year that this is not only unpleasant but also extremely dangerous to the health of young children. It can blind, and in extreme cases lead to death. Naturally, parents of the play-group children are understandably concerned and have voiced their fears to the Club.

There is a sign at the entrance to the ground stating that dogs are not allowed in the field. It was put there for a good reason. It is even more important now that very young children are based there that the club rules are adhered to. The Committee, and above them the four Trustees, have the power to ban anyone not abiding by the rules of the Club.

While the ground is private there is a public right-of-way close to the top fence. But this is not fenced off - not an ideal situation and our local Parish Councilor, Mr Denis Claydon, has promised to enquire if the council can find funds to enclose the footpath. In the meantime, please dog-lovers - and I'm one myself - think of the damage your dog could possibly do to very young children.

Now to the cricket. Not so far a very good season for the 1st XI. After Lt. Gaddesden scratched the first match, giving us 25 points and then on to Broomwades for another 25 points, hopes were high. The next game was rained off and that seemed to start a downward trend. We lost to the old 'enemy' Monks Risboro' - despite on paper looking the better balanced team. Two losing draws followed against Ley Hill and Hawridge and then defeat at home to Ballinger. The team managed a fairly comfortable win over The Lee but against Holmer Green they fell to pieces, dismissing the 'Green' for only 116 but in reply managing a miserable 65. True, they were without Skipper Bob and Amjam Khan, but should still have done much better.

A pleasing note is the improving form of young Jack Hedgeland - both with the bat and the ball. And I must say the fielding of another youngster, James

Cricket Section

Shrimpton, is a pleasure to see - and shows up a few more experienced players.

The 2nd XI are faring quite well. Despite the loss of their captain, Dave Sanders, with a painful hamstring injury, they are battling manfully. They have won four of their eight matches to date - one was rained off - with two winning draws and two games lost. Not a bad record considering they play several of the other club's 1st XI's. The match against newcomers, Wendover, where we feared they might get a drubbing, turned out to be a great contest.

Wendover piled up 235 for 8 - a formidable total and I assumed that the 2nd's would shut up the shutters and try to gain as many points as they could. But, not at all! From the start, they went for the runs, battering the Wendover bowlers all around the field, finishing up 218 for 6, with some good knocks from practically everyone. A few more overs and they would have gained a sensational victory. It was a match I thoroughly enjoyed - though not without losing a few finger nails in the process. If only they could be assured of putting out their best team every week, they would be one of the best teams in their division.

Both teams, so far, are going well in their respective K.O. Cup competitions - despite the weather delaying games. The 1st XI are due to play Downley shortly after two failed attempts, while the 2nd's go to The Lee for their next round. Let's hope we shall see both teams in their respective Finals.

Members at the club are working hard to raise money to pay back what we owe after spending out on the improvements and much needed new equipment. Around £1200 was raised at the Race Night - enjoyed by all apparently - and Sunday's Fun Day brought in approximately £460. Wonderful efforts, but there is still a long way to go. Anyone who thinks they can help in any way - either with ideas or fund-raising skills or just sheer muscle, should have a word with our Jane or Bob. Make it a wonderful place for the generations to come. You know you want to.

Geoff Gomme

~~~~~



**Insanity is hereditary -**

**you get it from your children!**

# Loosley Row & Lacey Green WI

Second Thursdays (except August)

2pm Village Hall



Time for another report – what have we been doing at the start of what is supposed to be summer? We all joined together at Dry Hillocks for a coffee morning, when we viewed a video produced by Grindelwald Productions in Princes Risborough, on Curious Crafts of Old England. One of the crafts featured was the story of Gomme's Forge and features interviews with Connie, who, as you will probably know is one of our longest serving members - and consequently, of great interest to the rest of us. It is an extremely interesting piece and if you haven't seen it, it is well worth viewing. The producers allowed us to sell the videos to members so many of us have a copy.



After such intense viewing, we all enjoyed a welcome cup of coffee and all in all, had a very enjoyable morning.

Another notable event – our President invited us to her garden for afternoon tea. Unfortunately, the weather decided not to smile on us – just as we had everything set out, and members started to arrive, so did the rain so we had to go inside and Jean had groups of members in her lounge, breakfast room, and dining room.



Sounds of laughter and chat rippled around the house, evidence that everyone was having a good time. Jean had spent many hours working on her garden so after the showers we all braved the weather and admired her work.



She had designed the garden with such flair (who needs Alan Tichmarsh?) and we were all very impressed. It was another successful and extremely happy occasion and left us all regretting the demise of "Afternoon Tea" – cucumber sandwiches and all.



A very important event in the WI Calendar, of course, is the Annual General Meeting and this year it was our turn to send a delegate. Kathleen Turner spent a very interesting day at the Royal Albert Hall. Both Resolutions were carried and there were some very interesting speakers, including Jane Fonda and Bill Bryson. Quite a day!

We have speakers on Wendover Waterways, Bucks Cottge Crafts and Odd Odes coming up as well as our Annual meeting and what do you know? Christmas Lunch!! So why not come along and join us. And don't forget, if you come up to buy a stamp or change your library books at the Post Office, we have coffee and tea with a biscuit and a chat in the Small Meeting room on Thursdays 10am till noon. It would be good to see you.

**Barbara Hobdell**

800+ questionnaires were issued in Lacey Green, Loosley Row and Speen, and 104 were completed and returned. The age profile shows most respondents to be over 35 with a high proportion over 65. The purpose of the questionnaire was to provide the Steering Group with information about what people wanted or didn't want in the community, and to enable us to identify those issues that would merit attention in the future. Since we had already identified many issues previously, we didn't really expect any great surprises. However, it was considered important to give every household in the parish an opportunity to have its say.

Space prevents our including a more comprehensive report. If anyone would like more detailed information, please contact me on 01844 3448975. For those who have access to e-mail, I can send more information including summaries of the yes/no answers and the comments. In this report we have identified the more significant results, as far as possible, and hope that we have not introduced any unconscious bias. Where Lacey Green is mentioned, it covers both Lacey Green and Loosley Row.

The Yes/No questions are fairly easy to analyse, and we have produced two figures for each – firstly, the percentage in favour of any defined item, this percentage being related to those answering the particular question, and secondly, the response ratio, defined as the proportion of those answering the particular question to the total number of questionnaires returned. The higher the response ratio, the more reliable is the result. With comments we have grouped like comments together to give an indication of the number of respondents expressing a particular view about some issue. Particular comments were often made by only one respondent. These will not be ignored, but are likely to receive less weight than those made by a larger number of people. Many respondents answered only some of the questions, and ignored others. In some cases these omissions were covered by appropriate comment. For example, those without children living in the household sometimes said that they were not in a good position to answer those questions relating to children's activities.

The results have been analysed separately for Lacey Green and Speen. In most instances the percentage support figures and the response ratios were similar for the two villages, although there were notable differences over certain topics.

We are extremely grateful to those residents of the parish who did return their questionnaires. Some people went to a lot of trouble to provide valuable comments about a whole range of topics. All contributions will be taken into account in any further work based on the survey. We are also pleased that 22 people offered to help in various ways, although three of these did not provide names or addresses so we don't know who they are!

### Post Office, Store, Community Centre

|                         | Lacey Green      |                | Speen            |                |
|-------------------------|------------------|----------------|------------------|----------------|
|                         | Percentage agree | Response ratio | Percentage agree | Response ratio |
| Use Post Office         | 56               | 0.97           | NA               | NA             |
| Welcome Library service | 37               | 0.92           | NA               | NA             |
| Agree Post Office times | 61               | 0.86           | NA               | NA             |
| Use general store       | 91               | 0.90           | NA               | NA             |
| Community centre needed | 58               | 0.85           | 63               | 0.78           |

As regards post office opening times, 63% of those who commented would prefer 3 days of 2 hours, instead of the 2d/3h present arrangement. There were several requests for an earlier start time (say 09.00) to link with the morning 'school run'. Not surprisingly, there were also some who wanted opening in the evenings or at weekends. Some respondents were unaware of the details of the post office, even though it has been widely advertised. The main reasons given for not using the post office were inconvenient times of opening and being at work. Preferred days were: Monday 6, Wednesday 4, Thursday, Friday and Saturday 3 each.

There was considerable support for a village store, and it would need to stock fresh produce, including bakery products, provide a delicatessen, and deliver newspapers. Prices would need to be competitive. The weighted average spend in the store would be roughly £12 per week.

The relatively high support figure for the community centre may be linked to the thought that various communal services might be available. Various needed facilities/services were identified, the most common being a doctor's surgery both in Lacey Green and Speen. It was also noted that the nearest branches of HSBC bank are in High Wycombe and Great Missenden.

### Public services

Levels of satisfaction with public services varied. From comments made by respondents, the activities of the Parish Council did not appear to be well understood, although it received relatively high marks. Comments about the District and County Councils were generally critical, it being considered that services provided were poor and allied to high costs. The main areas of dissatisfaction were the poor condition of roads, the absence of police, and that councils did a lot of talking but were poor on action. The biggest item of dissatisfaction was the high level of council tax. 70 percent of respondents thought that council tax was not a fair and effective way of funding local government. The most popular alternative was for a community charge or similar where everyone has to pay something. Negative responses were high for any property-based tax.

56 percent supported more local employment. There was minority support for commercial development, but industrial development would not be liked. This is not surprising, since one of the attractions of the Parish is that is located in beautiful countryside, and people don't want it spoiled.



56 percent of Lacey Green respondents favoured the concept of an increase in the parish precept to fund local facilities, but support from Speen was only 42 percent. There were a few suggestions for specific items (although under the later topic of needed improvements, there were plenty of diverse proposals). The difference between Speen and Lacey Green as regards private funding of facilities was marked. Not only did Speen support the concept to a much greater extent (50 and 24 percent respectively), but also the amount of money so provided was three times as high. The average amount of money that respondents were prepared to contribute was £44 for Lacey Green and £137 for Speen.

### **Traffic speed reduction and school parking**

These topics have been running sores in both villages for years, to a greater extent in Lacey Green than in Speen. Popular counter-measures were a 20 mph limit outside the school, village entry features, and chicanes. Only a minority favoured mini-roundabouts, or shallow ramps.

96% of respondents in Lacey Green thought that parking outside the school was a problem. The most popular solutions included off road parking (28), walking to school (7), school bus (7). Some respondents wanted parking to be made illegal. Other suggestions included reducing the catchment area, shared transport, and the use of parking permits. For Speen, 60% of respondents thought that parking was a problem, to be solved by children walking to school. There were some who wanted 4x4's banned.

### **Use of Public Transport**

Because of the way in which the questions were framed, and the fact that many respondents did not attempt to answer the questions in this section at all, it is difficult to draw any firm conclusions. Roughly 40 percent of respondents said that nothing would encourage them to use public transport. However, some car users might be persuaded. Lower fares and a more frequent service were the main incentives identified by Lacey Green, together with cross ticketing. Speen respondents wanted extended hours and a more frequent service, together with cross ticketing. The most popular destinations were Princes Risborough, Wycombe, Aylesbury and Thame, in that order. Generally, only a minority of respondents that drive would be prepared to use public transport to make the journeys.

### **Communications**

95 percent consider it important to have information about what is happening in the parish. Satisfaction with existing communications was a different story. In Lacey Green, 73 percent thought it satisfactory, but for Speen the figure dropped to 37 percent. The difference between the two villages is interesting, and we don't really have an explanation. The only factual difference is that each village has its own magazine, but both magazines received adverse comments about the obsolescence of information! Several respondents thought that a website would be extremely useful. One, at least, suggested communication via e-mail (to those capable of receiving it), supported by hardcopy, notice boards etc.

### **Waste collection and recycling**

Although a small majority favoured the new proposals for waste collection, most respondents already recycle green waste. Only a few respondents understood the potential, implications of a fortnightly collection, especially of biodegradable waste. One individual commented that it was stupid.

### **Leisure and other non-work related activities**

Views as to whether there were adequate facilities for children and young people were divided. About half of the respondents thought that there should be an improvement and there were many suggestions, the most popular being a youth club. However, few people were prepared to help with a youth club. There were those who thought that the natural environment should be perfectly adequate. Several people commented that disabled access to various facilities was an actual or potential problem. There was minority support only for revival of the Twinning Association – 43 percent from Lacey Green, 26 percent from Speen (response ratio 0.69).

### **General comments**

Clearly an overwhelming majority of respondents liked living in the parish and thought it a great place. The main attractions were the people, the countryside atmosphere, and the community spirit. The main areas identified as needing improvement were traffic, parking at the school in Lacey Green, lack of a village shop in Lacey Green, and road surfaces. The one item clearly identified as a problem elsewhere was the junction between Woodway and the A 4010. There was also concern at increasing development in general, as well as possibly within the green belt, and perceived antisocial behaviour in Princes Risborough.

### **Conclusions**

Despite the relatively poor response rate, the results do we believe reflect the collective view of the residents. Although Lacey Green and Speen are separate villages within the parish, there is a high level of agreement on many topics, and this would support our view that the results are valid. Equally, there are some distinct differences. The community planning group aims to look at the whole parish of Lacey Green, which includes both Speen and Loosley Row. 59 percent of Speen respondents wanted separate Parish Councils. No reasons were given for this, although some respondents did not like the link with Lacey Green. Equally, there were those who would like a greater degree of togetherness, and an end to the 'them and us' attitude. We hope to hold a public meeting, probably in early September, at which we will present the results in more detail. Some specific topics will also be on the agenda, almost certainly including waste management and recycling.



## *News from St John's Parish Church*

(Rector – The Reverend Denise Critchell)

Serving the village communities of Lacey Green, Loosley Row and Speen

**D**ear All

Although, traditionally, the summer is a quiet time at St John's, when priority is given to rest, relaxation and re-invigoration (!) we still have many events to keep us busy.

The end of term services on 21<sup>st</sup> July, say farewell to 52 leavers from St Johns school. The Churchwardens will present gifts from the church to the children and we wish them and their families well as they move on to their new schools. We also look forward to meeting all the new children as they join us in September.

We also say goodbye to Lissa our curate for the Risborough team as she is moving on and hello to James who will be joining us at the end of July and his training incumbent will be Andrew Meynell.

We also say goodbye and a big thank you to Sue who has overseen the Toddler Praise service for the past 3 years and we welcome in leadership Pam and Suzanne and look forward to seeing the growth in this important area of ministering to the very young.

Lighthouse 2005 takes place between Monday 25<sup>th</sup> and Friday 29<sup>th</sup> July at the Princes Risborough Upper School, New Road, Princes Risborough. Lighthouse is a Christian holiday week for local children and this will be our fourth year in Princes Risborough. The daily programme provides an opportunity to explore

the Bible, to participate in sports, craft and music, all interlaced with laughter fun and joy.

The Gosling/Matthews family wedding was a splendid occasion and all at the wonderful reception at Hampden Hall afterwards had a great time.

The Home Groups and Prayer Group resume in September, but the Home Group in Speen with Marion Hussey will be carrying on throughout the summer on the 2<sup>nd</sup> and 4<sup>th</sup> Tuesday on the month.

The 10.00 am All age Holy Communion service throughout August will only be 55 minutes and is our commitment to you, knowing you then have the rest of the day so put the Lord first!

### **Baptisms**

There were 5 people confirmed on 29<sup>th</sup> June by the Bishop of Buckingham and 6 additional people have joined the electoral roll in the past 2 months and we thank God for the gifts that they bring to us.

We continue our support of Sena and Jane Ounate-Lare and family in their work with the Youth Community Outreach in Togo, West Africa. Information about them and their wonderful work is available at the back of the church.

Lastly, don't forget to get your holiday reading material from the Book Stall at St John's, there is a good selection of thought provoking books for all ages at all levels!

### **Forthcoming Events**

**Aug 28<sup>th</sup>** The baptism of Ali Pameroy

**Sep 4<sup>th</sup>** Youth Contribution at the 10.00 am service followed by a 'bring and share' BBQ at the vicarage afterwards.

Sep 18<sup>th</sup> Harvest Festival and the baptism of Emily Wilkes

The Remembrance Service in the autumn will be repeated as last year's service went so well and has been requested again. Full details will be put on the notice board outside the church near the time.

The PCC are working on a 'Needs and Significance' Statement for the extension of the church and in the autumn the PCC will be meeting to discuss the 'Mission Shaped Church'. Society has changed so much in the last 30 years, especially in the local community and how we relate to each other. They will be discussing the questions and challenges that face us and think about ways to help us engage with the issues of being church today. It is also proposed that an Emmaus group will meet in the autumn, please watch for further details. Also, an Alpha course will run again in autumn – see the church notice board for details.

## Regular Services

The times and format of weekly services at St John's are listed below for reference:

### Sunday

|         |                          |                                                                               |
|---------|--------------------------|-------------------------------------------------------------------------------|
| 8.00am  | Holy Communion (1662)    | 1 <sup>st</sup> , 2 <sup>nd</sup> & 4 <sup>th</sup> Sunday                    |
| 10.00am | All Age Family Eucharist | 1 <sup>st</sup> Sunday of the month                                           |
| 10.00am | Parish Communion         | 2 <sup>nd</sup> , 3 <sup>rd</sup> 4 <sup>th</sup> (&5 <sup>th</sup> ) Sundays |
| 6.00pm  | Choral Evensong          | 1 <sup>st</sup> Sunday of the month                                           |

### Tuesday

|                  |                                                                 |  |
|------------------|-----------------------------------------------------------------|--|
| 9.30am           | Communion Service in the Lady Chapel at St John's               |  |
| 2.00pm           | Pram Service – each Tuesday afternoon during term time          |  |
| <b>Wednesday</b> | Group Communion Service at St Mary's Church, Princes Risborough |  |

**1<sup>st</sup> Sunday** - Family orientated service, **3<sup>rd</sup> Sunday** – Family Worship, Sunday

**Schools** open on 2<sup>nd</sup> and 4<sup>th</sup> Sundays. For details of Sunday school please contact Jenny King 01844 343810.

We are looking to provide a crèche soon – watch this space!  
Full details of all services, articles and detailed information about St John's Church is published in the Parish Magazine 'Viewpoint' which is published monthly and also on the notice board outside the church.  
Be blessed by your Parish Church – we look forward to meeting you at our lovely, lively and more importantly 'growing' church, you are always welcome and will be made welcome! In the meantime I hope you have a wonderful summer holiday.

Andrea Bennett      ☎ 01844 274550      ✉ [a.bennett57@btinternet.com](mailto:a.bennett57@btinternet.com)

---

# Village Directory



| <b><u>Organisation</u></b>                  | <b><u>Contact's Name</u></b>                    | <b><u>Contact's 'phone no.</u></b> |
|---------------------------------------------|-------------------------------------------------|------------------------------------|
| 81 <sup>st</sup> Over-60s Club              | Carol Knight                                    | 01844 343093                       |
| Happy Wanderers Walking Club                | Roger Brudenell                                 | 01844 346893                       |
| Horticultural Society                       | Terry Fendom, Chairman                          | 01844 342636                       |
| Karate Club                                 | Richard Peace                                   | 07768 896078                       |
| Kinder Gym                                  | Jenny Stothard                                  | 01844 344441                       |
| Lacey Green Parish Council                  | George Crombie (Sec)                            | 01494 488240                       |
| Lacey Green Productions                     | Val Brookhouse                                  | 01844 344207                       |
| Lacey Green Singers                         | Jane Brown                                      | 01844 346071                       |
| Lacey Green Sports Club                     | Jane Oakford (Sec)                              | 01844 346295                       |
| Lacey Green Twinning Assoc                  | Not currently active                            |                                    |
| Lacey Green Village Hall (Bookings)         | Karen Hodgton                                   | 01844 274254                       |
| Lacey Green Windmill                        | Michael Hardy                                   | 01844 343560                       |
| Loosley Row & Lacey Green WI (afternoons)   | Jean Gabbitas                                   | 01844 346469                       |
| Pilates                                     | Sue Keeling                                     | 01844 346656                       |
| Police (Area Beat Officer)                  | Adam Polkey                                     | 01296 396099                       |
| Residents Association                       | Not currently active<br>(Laurence Rostron, Sec) | 01844 343276                       |
| St. John's Church                           | Rev Denise Critchell                            | 01844 347741                       |
| St John's School Parents Association        | Sue Robinson                                    | 01844 342574                       |
| West Wycombe Decorative & Fine Arts Society | Ginnie Brudenell                                | 01844 346893                       |
| Whiteleaf Bowmen                            | Roger Jones                                     | 01494 446966                       |
| Windmill Under 5's Playgroup                | Kay Bambrick                                    | 01844 347275                       |
| Windmill WI (evenings)                      | Stella Boll                                     | 01844 347268                       |
| Yoga Group                                  | Annie Cahill                                    | 01844 343643                       |



# Village Diary **Aug 15 – Nov 15** All events at Village Hall unless otherwise specified



|        |                                                                          |               |
|--------|--------------------------------------------------------------------------|---------------|
|        | Maize Maze open every day until Sep 4                                    | 10.30am – 6pm |
| Aug 21 | Happy Wanderers' normal walk #                                           | 10.30am       |
| Sep 3  | Annual Show of Horticultural Society. Staging of exhibits at             | 1.30-2.30     |
| Sep 3  | Black Horse car boot sale at the pub                                     | 2-5pm         |
| Sep 6  | 81st Over 60's Club (1st Tue of month)                                   | 2pm           |
| Sep 7  | Windmill WI (1st Wed of month) Birthday Meeting                          | 7.45pm        |
| Sep 8  | Loosley Row & Lacey Green WI (2nd Thu, except Aug)                       | 2pm           |
| Sep 10 | End of Season Disco at Sports Club                                       | TBA           |
| Sep 14 | Happy Wanderers' short walk (2nd Wed, Village Hall car park)             | 10.30 am      |
| Sep 20 | Parish Council Meeting at Speen Village Hall*                            | 7.30pm        |
| Sep 21 | Horticultural Society (3rd Wed of Jan, Mar, May, Jul, Sep, Nov)          | 8pm           |
| Sep 24 | West Wycombe Decorative & Fine Arts Society 30 <sup>th</sup> Anniversary |               |
| & 25   | Exhibition of Members' Arts & Crafts – everyone welcome                  | 2-4pm         |
| Sep 30 | Happy Wanderers' weekend away, based in Shaftesbury (Fri                 |               |
| -Oct 2 | evening until Sun afternoon)                                             |               |
| Oct 1  | Windmill WI biennial jumble sale                                         | 2pm           |
| Oct 4  | 81st Over 60's Club (1st Tue of month)                                   | 2pm           |
| Oct 5  | Windmill WI (1st Wed of month)                                           | 7.45pm        |
| Oct 8  | Lacey Green Singers "Classical Choruses"                                 | 7.30pm        |
| Oct 10 | Parish Council Meeting *                                                 | 7.30pm        |
| Oct 12 | Happy Wanderers' short walk (2nd Wed, Village Hall car park)             | 10.30am       |
| Oct 13 | Loosley Row & Lacey Green WI (2nd Thu, except Aug)                       | 2pm           |
| Oct 19 | Annual Village Quiz by Loosley Row & Lacey Green WI                      | 7.30pm        |
| Oct 30 | Happy Wanderers' normal walk #                                           | 10.30am       |
| Nov 1  | 81st Over 60's Club (1st Tue of month)                                   | 2pm           |
| Nov 2  | Windmill WI (1st Wed of month)                                           | 7.45pm        |
| Nov 8  | Parish Council Meeting at Speen Village Hall *                           | 7.30pm        |
| Nov 9  | Happy Wanderers' short walk (2nd Wed, Village Hall car park)             | 10.30am       |
| Nov 10 | Loosley Row & Lacey Green WI (2nd Thu, except Aug)                       | 2pm           |
| Nov 12 | Windmill Artists Exhibition with all day Bistro & Bar                    | 10.30am – 4pm |

\* Members of the public are always welcome to attend these meetings  
 # Starting place informed on previous walk - usually within 1/2 hour's motoring of village

## SOME LATER DATES FOR YOUR DIARY

|        |                                                                                                                                                                                  |              |
|--------|----------------------------------------------------------------------------------------------------------------------------------------------------------------------------------|--------------|
| Nov 25 | & 26 Lacey Green Productions' pre-Christmas dinner theatre – an evening of comedy with stage adaptation of Terry Pratchett's novel "Wyrd Sisters". Tickets on sale in September. | 7.30 for 8pm |
| Nov    | Sports Club Ladies Night                                                                                                                                                         | TBA          |
| Dec 11 | Lacey Green Singers Christmas Concert                                                                                                                                            | TBA          |

**CLOSING DATE FOR COPY FOR THE WINTER EDITION**  
**October 17th 2005**

Published quarterly by the Village Hall Management Committee.  
 Printed by Risboro' Printers Ltd., Station Parade, Princes Risborough (01844 344827)