

# HALLMARK

*THE LACEY GREEN & LOOSLEY ROW MAGAZINE*



**"March Hare"  
by Brian Panter**

**FEBRUARY 2006**

**NUMBER 197**

**ESTABLISHED 1970**

# HALLMARK

## THE LACEY GREEN & LOOSLEY ROW MAGAZINE

SPRING 2006

Hallmark is published quarterly by the Lacey Green & Loosley Row Millennium Hall Management Committee, although opinions expressed in comment or contribution do not necessarily represent the collective view of that committee.

Our aim is to mirror the mark that the Village Hall makes upon our community, to publish the activities of all Village organisations, and to provide a forum so that the rights, the wrongs, the well-being of village life can be aired.

News from all the Village clubs, societies, churches and school, stories of local interest and entries for the Village Diary are always welcome. In addition, any suggestions for improving Hallmark.

### VILLAGE HALL EXECUTIVE COMMITTEE

Clive Hodghton (Chair), Lee Harte (Treasurer), Rachel Panter (Vice-Chair), Secretary position vacant, Karen Hodghton, Betty Tyler, Norman Tyler

### VILLAGE HALL BOOKINGS

☎ CLIVE OR KAREN on 01844 274254 (Answering service)

### EDITOR

✉ Norman Tyler, 5 Woodfield, Lacey Green, Bucks HP27 OQQ (2/3rds down Woodfield, on the left)  
☎ 01844 344606 (with answering service)  
Email [norman@tyler333.fsnet.co.uk](mailto:norman@tyler333.fsnet.co.uk)

### ADVERTISING MANAGER

✉ Chris Baker, "Woodpeckers", Kiln Lane, Lacey Green, Bucks HP27 OPT (past the pond on the left)  
☎ 01844 275442

**The Summer Hallmark will be published in May  
– closing date for copy is April 17<sup>th</sup>**

---

## Chairman's Report

## Spring 2006



Welcome to the first edition of Hallmark for 2006. The days will be getting longer and the weather hopefully a little warmer.

The Village Hall continues to offer many opportunities to meet with other like minded people and share a hobby or two. All of these organisations have posters with their relevant details on the notice board by the bus stop. Tuesday evenings are now available for hire, so if you

would like to run a class please phone Karen. If you are looking to have a private party for a birthday or anniversary please book early. We now have many repeat users and lots of people are being disappointed when the date that they require has already gone.

The Village Hall Committee is once again looking for a secretary. Due to a change in his personal circumstances, Chris Agate is unable to continue. We would like to thank him for all his hard work and wish him well for the future. If you enjoy meeting local people

and are available for a couple of hours once every two months, then we would love to hear from you.

Our project for 2006 is to improve on the storage facilities and car park and we will keep everyone informed as we make progress. As always money is the key issue!

Finally the A.G.M. will be held on Tuesday March 14th at 8p.m. in the Village Hall. Please join us and enjoy a glass of wine or cup of coffee afterwards.

**Clive Hodgton, Chairman, Village Hall**

## From the Editor



We have our usual variety of regular contributors, keeping us up to date with what's going on around us. Hopefully, the photos

help to give a stronger impression of the atmosphere and people involved in each organisation. One aim is to encourage new members, helping them to enjoy their lives more and make more friends.

In addition, this time we have some happy, charming reminiscences from Con Baker, our oldest resident, of her life as a child in Loosley Row around the 1920s. Historic, contrasting with today's pressurised life, when few have time to enjoy with their children those pleasures of life that cost nothing (page 17).

Mosh and Trudy Saunders, well known members of a family with several generations of connections with both our villages, celebrated 60 years of happy marriage. They met as a direct result of WW2. More old time reminiscences on page 12.

We have three Letters to the Editor on widely divergent subjects. One requests us each to write a letter to Bucks CC to help effect protection for our local countryside. Page 15.

Why not take your children or grandchildren for a local steam loco ride watching wildlife? Or treat yourself to the experience of learning to drive one yourself? All on page 19.

Obituaries often make interesting reading – they usually tell us something interesting we didn't know of the people who have just died. This issue's include Sir Nigel Mobbs, who was chosen with good reason to open our Millennium Hall. His life was certainly both interesting and successful, in human as well as business terms. See page 20. The others were Ray Biggs and Gwen Croucher, both with long village connections, on page 21.

If you would like to see articles on a subject we don't include, why not submit one yourself – or get someone else to?

**VOLUNTARY DONATIONS TO  
HALLMARK will be collected with  
the next edition in May**

**As a guide, printing and  
associated costs total about £5  
per annum for each household**

## On the Farm

Although this edition will drop on your mat in February, I am writing it the first week of January. The firework season of Guy Fawkes, Christmas and the New Year is behind us. I know fireworks are brilliant but, on behalf of the animals, I hate them. How can they possibly understand? In fact fireworks nearly prevented John becoming a farmer. To help him grasp chemistry at school, he started doing a little chemistry at home. Quite a normal thing to do, you might think.

Just doing experiments became quite tame until he began to make fireworks. Things soon progressed until he had a couple of friends helping to mass produce them in the farm kitchen. The whole enterprise was not without incident, but that would take best part of another article. However, John now loved chemistry and, as his father encouraged him to work on the farm by giving him only the grotty jobs to do, to prevent him

getting machinery mad, he was at the same time prevented from developing a love of farming. However, tradition dies hard and a place at agricultural college was taken. Soon farming had taken over from chemistry. Now, if we see fireworks 1 will be thinking 'How spectacular', but John still mutters recipes as he runs through the ingredients needed to make them.

I would say that we do farm very traditionally but within that framework things do change, partly at the dictate of government, partly as husbandry and nutrition is better understood, machinery improves and then occasionally when the scientists make a breakthrough that is really significant. Probably what should have the most far reaching effect, but the U.K. is very slow to develop, is fuel from crops. Is it the government that is holding this back? There is land in set-aside doing nothing. It is to prevent overproduction of grain. But if it could be put to good use?! Watch this space.

Over the years, tradition said 'Don't have all your eggs in one basket'. Still true to a point, but to do properly, every enterprise needs enormous capital; therefore gradually our business has been streamlined to concentrate on the dairy herd and arable. Gone are the sheep, the pigs, the chickens and the turkeys. We do now have the maze in the Summer but that is run separately from the farm. The arable side is fairly straightforward - grow the best quality crops that you can, store them well and sell at the optimum time. No problems? Well it sounds simple.

The dairy herd has the most difficulties. Assuming that the animals are comfortable in a healthy environment and have perfect nutrition and are milked regularly, then your husbandry should be OK. But here is the biggest snag. What to do with the calves. In order to produce milk a cow has to have a calf annually. We do need female calves as herd replacements. We mate our best cows with top dairy bulls and hope for a heifer calf (female), but of course half of them will be bull calves. Dairy bulls do not make good beef. So what do we do with them? Since the introduction of artificial insemination (A.I.) some sixty years ago, the dairy cows have improved almost beyond belief. Before then, the farms either kept a bull, often of dubious standard, or hired a bull which toured the area, also often of poor standard. The offspring from these bulls was very variable. The heifers were probably reared with a view to being milked and eventually mated with the current local bull. With A.I., only the best proven bulls were used. The conformation, production and health of their daughters were recorded for several years and the bulls could still

be used for years. The dairy cows improved beyond recognition. The herds developed into uniform, healthy entities, and production rose as nutrition and husbandry improved, as knowledge developed in every way. But still the problem of what to do with the bull calves. Dairy bulls, apart from the rare top pedigree animal, are just not wanted. A breakthrough has been made in the ability to sex semen. This is expensive but has to be better than disposing of unwanted calves.

Another change we have made is milking some cows three times a day. The cows giving the most milk would always come into the milking parlour first so these are the ones' we" have started doing this. This takes the pressure off them so they are more comfortable. They may well give more milk in total, but that is subject to how much they choose to eat. We have been thinking of doing this for a long time, but it needs enough people who can milk to juggle the work shifts. We have now a new young man who has learned to milk. With three times a day milking the first and last milking are about twelve hours apart which is just right. The last shift is late afternoon / early evening. It was most unfortunate that he was in the milking parlour with the cows when the first fireworks went off on New Year's Eve. Now when a cow lifts it's tail stand well clear- like six feet clear. When milking, the person is between the cows in a pit. It is possible to avoid one cow, even two, but the parlour holds 28 and such a fright really triggered them off. We suggested to him that it should bring him much good luck and he took it in good part, but there's no way you can explain to animals that scaring them is just part of your way of having fun. Just no way,

And by the way, we have moved into a new house across the field, built in the garden of John's parents' bungalow. It was strange for John leaving the farmhouse - he was born there. But the farmhouse needs work doing to it. It's over three hundred years old and, like the Forth Bridge, always needs something done - rather more than usual at the moment. We have called it 'Arcadia' because the definition in an old dictionary said "A place of rural peace and simplicity". So here's hoping.

Richard, Maxine and family will in due course move into the farmhouse. We are thinking of moving the offices into their house before we are completely snowed under with paper. Whoever thought farming would come to this?

**Joan West**

# Windmill Under 5s



Windmill Under 5's have begun 2006 in the fortunate position of having a full team of staff. They are such a hard working team who take genuine interest and care in the children we trust them with every day. As a committee led Pre-school, we

are dependant on their dedication to keep us all together. Gone are the days when children went along to 'play'. We are now governed by Ofsted and there are many rules and regulations to adhere to. Cherry, Denia, Audrey, Jo and Marie spend many hours planning and preparing the terms activities. Last term they certainly excelled themselves. The Christmas play was marvellous and there wasn't a dry eye in the house! Our homes were filled with decorations - Christmas Angels, napkin holders, cards and mobile glittery objects! The children made many different edible delights. I doubt that many of us had a taste, as the children were so keen to eat it themselves! At the Christmas party they were entertained by Magic Martin and Father Christmas visited with presents for everyone. No wonder they all slept well.

This half-term the topic is winter and the children will be learning how to look after the birds and taking photographs outside of all the beautiful countryside. This has been made possible by the children who left at Christmas and kindly bought a digital camera for the Pre-school. They will also celebrate the Chinese New Year and spread a little (or a lot) of love on St. Valentines Day. All in all a busy time.

Meanwhile, the committees project for 2006 is to improve the outside play area. We will be holding another of our very successful Indoor Car Boot Sales on Saturday February 18<sup>th</sup>, starting at 1.30pm in the Village Hall, and looking for some 'new' and interesting fund-raising ideas throughout the year. Most importantly we will strive to have happy and contented children.

**Karen Hodgton**

Keeping a child in disposable nappies costs at least £1000pa. Using cloth nappies saves around £600pa for the first child and £800 for the second if the same nappies are used, even including the energy costs of washing them.





# Loosley Row Village Life around the 1920s

## - SOME MEMORIES OF CON BAKER, THE OLDEST PERSON IN OUR VILLAGE



I have spent my life here - travelled a bit – a very happy life. I have had good health, which is so important.

I lived with my Mum and Dad at Loosley House. What a happy time. Post

Office on the bank; my good friend Gladys Hickman lived opposite the Post Office and sometimes we were asked up there for tea and played in the garden. Mr and Mrs Allen, who ran the Post Office, had no children. Then along the village to the shop, Mr Floyd's, where we bought sherbet dabs. Did they taste good!! And then the Baptist Chapel. All these are closed now – how sad. Down the hill to the Sprat, where Mr Sprott, a businessman, came down from London and had a tennis court built, with tennis parties at weekends. Then the Salmon, where Dr Hamilton lived – a keen gardener. She was doctor at Elizabeth Carrot Anderson Hospital in London. She too came at weekends. Then the Foundry. We (my Mum and Dad) came to live here – can't remember the year. It was nice to come there when they had wells at the cottage. My Grandma lived at Foundry Cottage. A man and wife lived opposite to my Grandma. I used to hide behind Gran's privet hedge and watch them. They used to quarrel and shout and the door was open, so I could hear and see. Over went the table and crocks smashed. I thought that was real fun until my Grandma called me in. What fun!! My gran kept chickens and they came into her kitchen for food. She also had a brick oven for baking bread, etc. She also made wine. Also in Gran's front garden was a lovely cherry tree. But we had to have it cut down – how sad.

In this nice village, everyone knew everybody and no new houses. Bit different now, but people are nice still.

I seem to remember lots of old people - well they seemed old in those days, back to my Sunday School days. I did not like it much, but if you went twice on Sunday you had a little ticket which you saved and when you had enough you had a morning hymn book. Red it was, and we used to write our name and sometimes wrote it backwards. What a laugh. You had a reading book for attendance and Sunday School anniversaries were great. Highlight of the year, we had a treat. Whit Sunday and Monday. Monday was the day sitting on the grass having our tea. Grown ups were inside. We had

bread and butter, plain and fruit cake, which all tasted so good. Bread and butter never tasted so good. Then into Mr Tyler's field for games, twos & threes and kissing the ring. Oh what fun. Teachers came round with a clothes basket with food left over from tea. One of the preachers from Wycombe came and threw sweets for us to pick up. Don't think they were wrapped – how they did not fall in a cow pat. Everything is different now. May be better, I don't know. Have more money and washing machine and freezer, etc. But still no time to do all one wants to do.

We had two bakers called Mr Janes of Lacey Green and Mr Tom(?) from Risborough, both with horse and cart. Mr Janes came Tuesdays, Thursdays and Saturdays. Mr Tom came Mondays, Wednesdays and Fridays, so we always had new bread. Two butchers, Mr Jackson from Risborough and someone from Chinnor (can't remember his name), came in horse and cart. Two grocers, Mr Whitney from Bledlow and Mr Picken from Wycombe. Also a fish man with horse and cart, with fish and cakes (not fish and chips) – wonder how we lived! Can't imagine that now – fish and cakes?? Now nothing delivered except milk. Thank goodness our milkman is so good, brings my bread one day a week.

Colonel Tye(?), of Loosley House, used to arrange Memorial Service, walking along to the memorial at Baptist Cemetery Gates, then walk up to Lacey Green to a memorial service at Lacey Green Village Hall.

This Hall was put up around 1920 and my Dad helped Mr John Saunders erect it. The old village hall used to have dances twice or three times a year. Cecil Saunders, uncle of Maurice ("Mosh" – see page 12), used to play the piano, then after several years it was Harold Williams – such fun.

I had a very happy married life with Fred, who sadly passed away some years ago with Parkinson's Disease. Fred and I had three children. All work in the Foundry. Had a lovely life – we didn't need so much money as people do now to pay mortgages, etc.

I am a great grandma, with four grandchildren and five great grandchildren. I still wish Loosley Row was a bit nearer the sea - as I am "cancer the crab" birth sign, not surprising. I have lots of friends and everyone is so nice to me. Hope when you read this, you will be interested. I hope to live to be 100, as my grandma was. If all goes well, that is, 3 years to go.

# Loosley Row & Lacey Green WI



Second Thursdays (except August) 2.00 p.m. Village Hall.

We hope that you all had a very happy Christmas - and A VERY HAPPY NEW YEAR from all our members.

It seems like a long time ago now, but we had a very successful Annual Meeting with all the vacancies filled without the necessity of elections. Our new President is Jill Baker, with Dawne Glennister taking on the Secretary's post. Val Webster is carrying on as Treasurer and the committee numbers as last year, with the addition of Joyce Delnevo, so hopefully everything will continue to run as smoothly as ever. After the meeting, we enjoyed a very entertaining Quiz and of course tea as usual.

The December meeting was, of course, our Christmas Lunch. The committee again provided the meal and everyone agreed that it was one of our best. Members provided the sweet and what a variety – it was impossible to choose so most members just had to have a second helping.



Following the meal, we were entertained by Bethany Spicer from Loolsey Row on her harp. What a wonderful recital she gave – such a talented young lady and everyone enjoyed listening to the lovely and varied music.



After this restful interlude the mood changed – our usual Fancy Dress Competition! This year "Your favourite pudding" was the theme and as usual those taking part really got into the spirit of the party.



**What do you think of that?**

And what a task for Chris Baker, who "volunteered" to be our judge. After much deliberation, Trudy Saunders was declared the winner.



The winner of the Table Decoration was Jean Gabbitas.

And the Bloom of the Month Cup was won by Jill Baker with Connie Baker & Jules Wisdom joint second.

If you get your Hallmark in time – we hope to see you at our PANCAKE DAY event in the Village Hall – look out for Posters.

We have a year of very interesting speakers and events ahead of us – so we would be very happy to welcome any new members able to come along to swell our numbers.

**A custard TART !**

**Barbara Hobdell**

All I grow in my garden is tired.



One should always play fairly when one has the winning cards.

Oscar Wilde



# News from St. John's CE Combined School and Parents' Association

## Encore!

The lead up to Christmas was, as ever, a really busy time at St. John's. In the midst of all the seasonal activities, pupils from the lower (infants) and upper (junior) schools played to packed audiences with stage performances.

The lower school pupils performed 'Donkey For Sale' – a delightful traditional Christmas story with songs and dance.

Upper school pupils presented "We'll Meet Again" – a special production created by Year 6 teacher Mrs Thomas. The show, which was set in World War Two featured songs, dance and poetry from each of the classes and even included a star performance from the School Caretaker, Mr. Mac.

Ticket sales and donations raised a staggering £1800 for school funds. The money will be spent to buy more new staging for future productions.

## 81<sup>st</sup> Club

Members of the school choir performed Christmas carols and songs from World War Two for Lacey Green 81<sup>st</sup> club at the Village Hall. The event was a great success – enjoyed equally by the children and the club members who made them feel very welcome.

## Lacey Green Singers

Children from the choir also joined the Lacey Green Singers to perform a selection of carols at the local group's Christmas concert.

## St John's School Web Site

[www.stjohn.bucks.sch.uk](http://www.stjohn.bucks.sch.uk)

For up to date information about the school and our activities, please visit our newly restyled web site.

## A week in Narnia

After a school trip to see The Lion, the Witch and the Wardrobe at the cinema, upper school children spent a week using Narnia as the theme for many of their lessons. There was an open day display of their work in mid January.

## We can use your old ink cartridges!

Last year hundreds of millions of empty ink cartridges were dumped into landfill sites when they could have been recycled and reused many times. We can receive anything from a few pence up to £5.00 for each ink cartridge we collect and send for recycling - nearly all

brands of ink cartridge can be recycled. Please help us to improve the environment and raise funds for the school by bringing in your used ink cartridges - leave them in the box provided outside the office.

## Pupil Council

St John's first Pupil Council was elected towards the end of 2004. The purpose of the council is to give the children a voice in decisions made in the school and a sense of responsibility within the school. Each class has two representatives who chair class councils and then bring any matters raised to the Pupil Council. Last term the Pupil Council organized a 'Mufti' day and Hot Dog lunch raising £430 for St. Tiggywinkles animal hospital.

Elections were recently held for a new council and their first project is building a link with a school in Uganda.

## Church links

Children from the school attended a start of term service at St. John's church led by the Reverend Denise Critchell. There will be a special service for all pupils to mark Ash Wednesday later this Spring Term. Reverend Denise also leads assembly at the school each Friday.

---

Social Events at school – please see the Village Diary at the back of Hallmark

---

~~~~~  
Computers in the future may weigh no more than 1.5 tons

*Popular Mechanics*, forecasting the relentless march of science, 1949



~~~~~  
Bottled water costs twice as much as petrol, 3 times as much as milk and 10,000 times as much as tap water! Then there's the 1.5 million tonnes of plastic that goes into making the bottles every year.

Whatever some drinks companies would have you believe, tap water is perfectly safe to drink - and you've already paid for it.

[www.greennature.com](http://www.greennature.com)

# Mosh & Trudy Saunders Celebrated Their Diamond Wedding

on 20<sup>th</sup> October 2005

The Saunders is one of our villages' longer standing family trees.

Mosh and Trudy met after he had been war-wounded in World War 2 and taken to New Cross Hospital in Wolverhampton, where Trudy was doing voluntary work. In due course, they were married in Lacey Green Church and had one daughter, Kay, plus four grandchildren.

Music, as well as painting and poetry, has always played an important part in Mosh's life. He formed a group with Len Cappal, George Bapping and Tony Goodchild, calling themselves *Harmony 5*. He worked and made quite a lot of money for Multiple Sclerosis. His family were the local builders and undertakers and Mosh worked in the business along with his father and brother.

Alan Luxford has known Maurice ("Mosh") and Trudi longer than most people and has written the following:

**M**y first memory is when my Mum told me that in the summer of 1923 she took Mosh and his twin, Millicent, in their pram for a walk down to the foundry in Loosley Row. It wasn't until she got there that she realised she had the return journey UP Loosley Hill to face. Mum was slight of build and only 13 years old !!

We are lucky to have Mosh with us today. At the outbreak of war in September 1939, we were living next door to "Chorlton", Mill Road (as the road was then called before the more imaginative name of Main Road !!), where Mosh was living with his parents, and brother and sister. I believe it was 1941 when Mosh joined the army, and at the end of the war in 1945 he returned to Lacey Green with a lovely young lady. My 14 year old thought was 'War can't be all bad' There followed their wedding and the small bungalow behind "Chorlton" became their home.

Mosh and I share a Great Great Grandfather and I have never understood why he had the ability to pick up any instrument, musical or otherwise, and play a tune, i.e. the accordion, piano, a carpenters saw etc. etc. Seemed so unfair - I could just about play the gramophone!! I remember Mosh building a two tier trestle and placing jam jars on it, filled with various amount of water, and then playing them with drum

sticks. To hear Mosh and Ted playing the same piano at the same time was an absolute joy.

They were next door neighbours 'second to none' and in 1952 my parents decided to build a bungalow on the other side of "Chorlton". The move from the cottage was some 20 yards - we didn't employ a furniture van!!

N.B. Our shared Great Great Grandfather was William Saunders, Speen Farm (now the Home of Rest for Horses)"



On their wedding day 60 years ago



At their celebration on 20<sup>th</sup> October 2005

# Letters to the Editor

## THANKS FOR CHRISTMAS LIGHTS

I would like to say "Thank you" to everyone who makes such a fine effort to brighten up the dull December days by putting up lights for Christmas.

I enjoy them all, whether they are inside or out, plain or coloured, static or flashing, few or many, tasteful or tacky.

Driving home on cold, dark evenings, it is so cheery to see them all and very comforting to know that Santa Claus is alive and well and living at 'Bottle Cottage'.

Thank you very much.

**Sue Parslow**

## TROUBLE IN KILN LANE

I must have walked along Kiln Lane hundreds of times over the past 30 years and have always thought of it as one of Lacey Green's most attractive and least spoilt paths. Indeed, early maps show that it is one of the village's oldest lanes, dating back two hundred years or more. So I was extremely saddened and angered to discover last autumn that a large swathe of its bank had been hacked away and replaced by a hideous concrete



platform running more than 400 yards down the lane. On further inquiry I discovered that this eyesore had been built, entirely without consultation or planning permission, simply to give access to heavy lorries going back and forth from Kingswood House. As if this were not bad enough, the person responsible had also taken it upon himself to flatten the surface of the lane alongside the platform. The result of this action, again carried out without any attempt to seek planning permission, is that rainwater which formerly ran down

the gullies on either side of the lane is now spread across its entire width, so that walking along the lane in wet weather is more like paddling through a stream.

Because the lane is a public byway, Wycombe District Council have referred the matter to the Transportation Department of Buckinghamshire County Council, who held a site meeting with the person responsible for the damage and 'asked' him to remove the offending structure before the end of November. Nothing happened. Now, nearly two months later, nothing is continuing to happen. I know that I am far from being alone in my determination to see this beautiful lane restored as nearly as possible to its original state and yet I am concerned that unless we make our feelings clear to Bucks County Council this hideous construction could become a permanent feature of our village. I hope that anyone who shares my concerns will contact the Council and urge them to take whatever action is necessary to force the person responsible to repair the damage that he has caused. The person to contact is:

Garrett Emmerson, Head of Transportation  
Buckinghamshire County Council  
Wycombe Area Office, Easton Street, High Wycombe,  
Bucks HP11 1NH.  
Tel.: 0845 230 2882. Fax: 01494 475346  
E-mail: [Wycombe@buckscc.gov.uk](mailto:Wycombe@buckscc.gov.uk)

Every letter, no matter how short, will make a difference, so please take a few minutes to help protect this beautiful corner of our village.

**Name and address supplied**

## FROM DENIS CROUCHER

Elsewhere in this edition I pay tribute to those who tended my wife, Gwen, before her recent death. May I please have a few more lines to thank our many friends for their kindness and consideration?

We came here quite by chance, really, over thirty years ago to take our first step on the property ladder after many years of nomadic life. It was intended as a temporary home but we have, of course, remained and could not have chosen a lovelier place or a better community in which to live.

It has been, and for me will continue to be, a great pleasure to have so many good friends who have been so very understanding and supportive during our troubled days. My grateful thanks to all of you and, since I have received so many cards and letters of



condolence which I shall find it difficult to answer individually, please accept this as an acknowledgement of your kind thoughts and generous words.

Finally, if you came to the Service of Thanksgiving for Gwen's life and I failed to see and speak to you, please forgive me. I was simply overwhelmed by such a magnificent tribute to her.

## Chernobyl Children Life Line

### To help children suffering from the after effects of the Chernobyl disaster

2006 marks the 20<sup>th</sup> anniversary of the nuclear accident at Chernobyl. Belarus was unfortunate enough to receive over 70% of the radioactive fallout and is still suffering from the effects. Sadly, these will continue for many years to come, so many that the scientists are unable to determine quite how long. Plutonium, one of the radionuclides, has a half life (the time taken for the radioactivity to fall to half its original value) of up to 24,000 years.

These people need all the help we can give. After what seems a very short break, we are now busy organizing another visit for a group of Belorussian children. We have invited twelve 9-11 year olds from 14th July to 11th August. There will be six boys and six girls, plus an additional boy and girl from last year who have been invited privately.

At the time of writing, I believe there are sufficient host families but I would be very pleased to hear from anyone who might consider becoming a support family. The support families act as an uncle and aunt and entertain the children on occasions to give the host family a break. Our hosts this year come from Aylesbury, Benson, Bledlow, Bledlow Ridge, Bolter End, Chinnor, Lacey Green, Radnage, Stokenchurch and Winslow – quite a wide area.

Please do get in touch if you feel you can help in this way or possibly you could arrange an activity for them. We should be most grateful to hear from you.

With all best wishes for 2006 from the Risborough Link.

**Ann Smith**  
**Chairman – Risborough Link 173**  
**(01844 345558)**

Loosley Row & Lacey Green WI  
invite you to

**PANCAKE DAY**  
**28 FEBRUARY 2006**  
10.30am in the Village Hall.



Do join us – its lots of fun:

Pancake tossing,  
Bring and Buy  
Raffle

£1.00 including Coffee & Pancakes

**"When I was a boy, I was told that anybody could become President. I'm beginning to believe it."**

US lawyer Clarence Darrow, quoted in the Daily Mail



**"God gave you one mouth, two eyes and two ears. Use them in proportion."**

Advice given to Archbishop Sentamu by his mother, quoted in The Mail on Sunday

**Bigamy is having one wife too many. Monogamy is the same.**

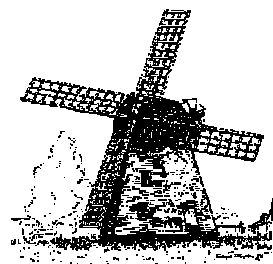
Oscar Wilde



How to keep an idiot occupied for hours – write "PTO" on both sides of a piece of paper!

# The Windmill Institute

First Wednesdays 7.45pm Village Hall



Once again, the year ended with members enjoying themselves at our Christmas party. The Committee prepared an excellent buffet and the evening was rounded off by a visit from several members of the Lacey Green Singers, who superbly entertained us with seasonal songs and carols.

Previous to this, at our November meeting, our speaker, Mrs Renkel, came to the meeting loaded down with hats! Hats of all colours, shapes and sizes. Her talk explained how all these hats fitted into her life. It was a most interesting and amusing talk - especially when members modeled some of the hats!

During November several members went to the Wycombe Swan to spend *An Evening with Betty Boothroyd*. The Bucks Federation of Women Institutes arranged this very interesting evening. They also arranged a trip to Salisbury, which was enjoyed by two of our members.

This year we have been able to offer two bursaries to our members. These bursaries are to be spent on, or put towards, any educational or recreational course. The lucky winners in the ballot held at our Christmas Party, were Mrs Carole Hanna and Mrs Sheila Dickinson.

We don't have a meeting in January, so our next get together will be on February 1, when our speaker will be one of our own members, Mrs Elmidoro, who will be talking about *Understanding and the Benefits of Reflexology*. In March, John Tyler will be talking about *The Changing Wildlife of the Chilterns*. In April, the Editor in Chief of the Bucks Herald, Mr David Summers is coming to tell us about *Editing a Local Newspaper*. If any of these subjects interest you, please don't hesitate to come and join us for the evening.

Another date to put in your diary is our spring JUMBLE SALE on Saturday, 11 March. If you have any jumble you wish to donate, please bring it along to the Village Hall between 10am and 12 noon, and then please come at 2pm and buy some more back again!

We are pleased to report that over the past few months we have welcomed several new members - but we always have room for more!

Daphne Williams

## Local Steam Locomotive Events

BY CHINNOR & PRINCES RISBOROUGH RAILWAY in conjunction with CHILTERNNS CONSERVATION BOARD

**Wildlife on the Move – wildlife watching train rides on Saturdays 1<sup>st</sup> and 22<sup>nd</sup> April**

Special trains will depart from Chinnor station at 10.30am, 12 noon, 1.30pm and 3.00pm.

Chiltern Conservation Board volunteers will accompany each train for the chance to observe and identify wildlife on the move as you travel by train along the foot of the Chiltern Hills between Chinnor and Thame Junction (near Princes Risborough). A seven mile round trip, who knows what you might see, but look out for Red Kites soaring overhead.

Special cheap fares apply - Adults £5, Senior Citizens £4, Children £2.50. For more information contact Cathy Rose at The Chilterns Conservation Board on 01844 355506 or Brian Dickson at The Chinnor and Princes Risborough Railway on 01296 622569.

**A series of Driver Experience Days during 2006**

This is an opportunity for members of the public to learn how to control a steam locomotive along the attractive but challenging countryside of "The Icknield Line". Participants will control the locomotive for the 7 mile round trip and complete the journey by climbing the 1 in 68 bank from Wainhill to Chinnor and bring the train to a gentle stop in Chinnor station platform.

GIFT VOUCHERS ARE AVAILABLE

If you are interested, telephone **07784 189322** for more details or visit web site [www.cprra.co.uk](http://www.cprra.co.uk)

I am not young enough to know everything.

Oscar Wilde





# Obituaries

## SIR NIGEL MOBBS

- 1937-2005



Gerald Nigel Mobbs was born in Birmingham in 1937. He was educated at Marlborough and Christ Church Oxford. In 1961 he married Jane Berry, a daughter of the 2<sup>nd</sup> Viscount Kemsley, and they had a son, twin daughters and seven grandchildren. The family have lived in Buckinghamshire for many years, over 28 of them at Widmer Lodge in Lacey Green.

At the time of his death in October 2005, Nigel Mobbs was the long-serving Chairman of Slough Estates plc, a position held by both his grandfather, Sir Noel Mobbs, and his father, Gerald Mobbs. Amongst many other appointments held, he was also Chairman of Bovis Homes plc, Chairman of Trustees of Historic Royal Palaces and a Commissioner of the Royal Hospital Chelsea.

Nigel Mobbs was High Sheriff of the county in 1982, received a knighthood in 1986, and in 1997 he was honoured to be appointed as Lord-Lieutenant, a role which he thoroughly enjoyed and to which he was utterly committed. He carried out the various duties with his customary energy, enthusiasm and talent for meticulous organization. He had a deep-seated love of his country and a great sense of public duty. During his term of office he represented Her Majesty the Queen on many occasions and also received members of the Royal Family when they visited various parts of the county. HRH the Princess Royal paid a second visit to the Home of Rest for Horses down the road in Speen in May last year.

Sir Nigel took great pleasure in opening the new Village Hall at Lacey Green on 9<sup>th</sup> October 1999. At that time he said he hoped that the new hall would for years to come be a focus for renewed village activity and

voluntary involvement. This hope was fulfilled as the hall has been a great success, thus enhancing community life in the village and the surrounding area. He believed that maintaining community spirit and pride was vitally important in today's fast-moving world and that, though opportunities for change should be grasped, the rich traditions of the past should not be forgotten.

Wherever possible, Sir Nigel liked to use local businesses, amongst them Gommess Forge; Dell Bros. Builders who undertook several projects at his home; Doug Tilbury to help with hedging and other work on the land; and Widmer Feeds who supplied food for his large horses. He presented prizes at the village fete, attended the induction of the vicar, Denise Critchell, at St. John's in March 2003, and liked to enjoy a pint of beer with family and friends at both The Pink & Lily and The Whip.

Nigel Mobbs was a big man in every sense of the word. Immensely tall, he had a commanding physical presence, a phenomenal memory, a huge capacity for work, and a tremendous sense of fun. He set high standards for himself and for those who worked alongside him but he was always fair and never pompous. His highly developed sense of humour enabled him to defuse many a difficult situation whether in the boardroom or elsewhere.

But business life was always kept separate from home life as far as was possible. As well as being a loyal public servant, he was a devoted husband, son, father and grandfather who liked nothing more than to get back to Widmer Lodge to be with his family, his horses and his dogs.

~~~~~

The last issue of Hallmark noted the death of Sir Nigel Mobbs, making the point that an obituary could only follow in the next issue. I am sure there will be an official obituary in this magazine but this is not about expounding the virtues of a titled man, this about an extraordinary man. I worked in the City of London for many years, during which time I dealt with, & worked alongside, Knights of the Realm, Politicians & Captains of Industry, and strangely enough they all had one favourite book. It was called 'Who's Who.' They all thought they had made it when they were important enough to be asked to make their own personnel entry.

The egotistic amongst them wrote reams about themselves and made sure they name-dropped about dining at *Le Manoir aux Quat' Saisons*, the *Waterside* & skiing at whatever resort was in vogue prior to publishing. Sir Nigel's entry in the *What is your Favourite Food & Restaurant* section, was not 'Snail Porridge at The Fat Duck At Bray'. It was 'A pint & a sausage sandwich at the Pink & Lily'. That was the measure of the man, no pretence. He had huge amounts of energy and a heart the size of a mountain.

Most of you will have read many things about Sir Nigel's achievements which, combined, would probably fill up this magazine. It would take an army of ordinary men to get close to what he achieved. The truth of the matter is that Sir Nigel Mobbs was not Sir Nigel Mobbs, he was plain & simply Nigel Mobbs, a man that cared for his country, his county, his village and his friends and family, a unique man whose presence will survive us all.

That is his epitaph - 'He Cared'. No one can ask for more.

### Nick of The Whip Inn

## RAYMOND GEORGE BIGGS



It is with regret that we have to tell readers of Hallmark of the sudden death of our brother, Ray, on 1<sup>st</sup> November at his home in Ross-on-Wye.

Ray was born at Wayside Cottage, Lacey Green, and lived in the village for many years, taking part in local activities. He was a keen angler and it was on a visit to Ross-on-Wye that he met and married Audrey and subsequently made his home there. Sadly, Audrey passed away four years ago.

Ray will be greatly missed by all his family and friends.

### Pat and Brian

## GWENDOLINE LAURA CROUCHER

Gwen, who died in December, came from Kent, where at a local dance in 1944 she met a young RAF Officer Denis on leave from training in Canada prior to active service in Burma. They married in 1948, when Denis



was flying with BOAC before returning to the RAF in 1949.

Like many service families, they had many moves and, in fact, lived in some 30 houses in the UK and also in Germany, the USA and India.

They had two daughters, Beverley and Rosalind, and Gwen was a devoted mother, often caring for them alone while Denis was away on duty.

In 1973, Denis and Gwen decided it was time to get on the "housing ladder" and arrived in Lacey Green. Gwen, accustomed to frequent house moves, did not anticipate staying too long in Lacey Green. However, as we know, they soon "settled in" and made significant contributions to village and local life over the years.

Gwen was active in many local organizations, Treasurer of the 81st Over-60's Club, an early member of West Wycombe Decorative & Fine Arts Society. She loved singing and was an active member of the Princes Risborough Music Society for many years. She also enjoyed gardening, was a member of the village Horticultural Society and a very accomplished needlewoman in a local sewing group.

Gwen will be sadly missed by her many friends and acquaintances.

**B&PG**

Gwen was a real person and a good friend. She approached life with dignity, always beautifully dressed. She unfailingly welcomed her friends into the immaculate house where she and Denis lived, and she obviously enjoyed their companionship.

She did the most lovely and intricate embroidery and was happy to advise us lesser mortals when we had problems with ours.

Gwen and Denis were a familiar sight at all the village activities where they contributed a great deal to local society.

I will miss Gwen for her lively conversation and firm opinions and will remember her humanity and sparkle with much affection.

**Ginnie Brudenell**

## Care in Our Community - A Tribute

We frequently read or hear stories of NHS shortcomings, but I should like to present another side of the coin. This is a tribute to those who recently gave such wonderful care to my wife and support to me and my family. It won't hit the headlines, but at least our readers will know that care in our community is there when it is needed most.

My wife became ill again in June. Our GP tended her at first and everything seemed to be under control with a slow but steady improvement through to September. Then the pain again became too much and she was forced to seek help from our GP, who once more brought it under control, but she continued to grow weaker until in November he brought in help to assist me in tending her at home. It was as if a host of angels had descended; wonderful tender loving care for Gwen and for me.

This was a combined well coordinated effort by our GP, the District Nurses, the Iain Rennie Hospice at Home and Risborough Carers. The Iain Rennie ladies were superb, always available to counsel or visit at any hour of the day or night, and I cannot praise enough their tender care of Gwen and support for me and our family. Similarly the District Nurses, who not only provided nursing care but equipment to assist this and personal care for Gwen. The 'twilight' nurses came every evening throughout the holiday period, always bright and cheerful, and, like the Iain Rennie nurses, regardless of the atrocious weather. Later a treasure from Risborough Carers took over Gwen's personal care and they also provided a night sitter to relieve me occasionally when the Iain Rennie sitter was not available. As I wrote earlier, a host of angels.

This brings me to our GP, a man whose selfless, devoted care should be cited as an example to all trainees GPs. Dr Peter Appleton is a wonderful man, who I hope will spare himself in his final time here so that he may enjoy with his family many, many, years of richly earned retirement.

My grateful thanks to everyone who contributed, directly or indirectly, to a wonderful level of care. God bless you all.

**Denis Croucher**

## Lacey Green Parish Council

Please make a note of the telephone number **0845 8 505 505**. This is now the **only non-emergency contact number for Thames Valley Police**, covering the counties of Buckinghamshire, Berkshire and Oxfordshire. All calls will be charged at local rates. Fully trained staff, who are equipped with the information they need to connect you to the service you require, will deal with your call. Thames Valley Police website [www.thamesvalley.police.uk](http://www.thamesvalley.police.uk) has a huge amount of information and you may also be able to find the answer to your query there. In the event of an emergency, -if a crime is being committed, or is about to be committed, or there is a risk of serious injury - contact 999 in the normal manner.

At a recent meeting of Wycombe District Association of Local Councils, a long service certificate was presented to Councillor Don White. Don has served the Parish Council for twenty-six years, twenty-two of these as Chairman.

The transfer of the Methodist Cemetery into the ownership of the Parish Council is currently in the hands of our Solicitors. They are, at present, in consultation with the Methodist Property Committee in Manchester, but the transfer is expected to be completed shortly.

The long awaited change to the speed limits in the Parish are anticipated to take place in February/March. A 30mph limit in Main Road/Woodway will extend from a point 44 metres southeast of the junction with the northern arm of Slad Lane, to a point 150 metres northwest of the junction with Wardrobes Lane. All other roads in Lacey Green/Loosley Row will be subject to a 30 mph limit, except Pink Road. Pink Road will be subject to a 40 mph limit, from its junction with Main Road to a point 200 metres north of the northern entrance to Widmer Farm. The section of Woodway from its junction with the A4010 to a point 150 metres northwest of the junction with Wardrobes Lane will be subject to a 50 mph limit. At the commencement of the 30mph limit in Main Road/ Woodway 'entrance gates' will be erected, together with a short section of coloured tarmac. Throughout this section 'roundels' on the road surface will remind motorists of the speed limit in force.

The Parish Council has noted an increase in the number of retrospective planning applications of late. These applications do not meet with the approval of

your Council. Unfortunately however, we have no powers to take action against them. Our concerns regarding such applications have been drawn to the attention of Wycombe District Council.

A scam spreading across Buckinghamshire, as well as other parts of the British Isles, associated with the sale of rural land, has reared its ugly head in Lacey Green. A small meadow in Church Lane has been 'pegged out' into fourteen plots and offered for sale on the Internet. Sale details suggest would-be buyers may be granted planning permission in the future. The District Council have served a Section 4 notice on the site, which prevents any form of development. Under the terms of the Local Plan, the site lies outside the curtilage of the village, thus prohibiting any development in the manner suggested in the foreseeable future.

**Dennis Claydon**

## Some more alternative definitions



|             |                                            |
|-------------|--------------------------------------------|
| Disappear   | To insult a Lord                           |
| Contraband  | U.S.backed counter revolutionary Orchestra |
| Dilate      | Live long                                  |
| Sycamore    | Not as well as I used to be                |
| Splastigate | To a nasty accident climbing into a field  |
| Combat      | An aggressive marsupial                    |
| Bacteria    | Returning more upset than when you left    |
| Tapas       | To gently touch someone's bottom           |
| Tombola     | A man who throws cats                      |
| Geranium    | Theory of the Parachute Regiment flower    |
| Shamroc     | Tribute Band                               |
| Explain     | "Concorde"                                 |
| Boulangerie | To heckle underwear                        |
| Melancholy  | Funny shaped dog                           |
| Mastiffs    | Boys at a Britney Spears concert           |
| Dentist     | A panel-beater                             |
| Moiaussie   | I am an Australian                         |
| Rebut       | Having your bottom lifted                  |
| Undertaker  | Half-hearted shoplifter                    |
| Focaccia    | A bread with no interest in the Far-East   |
| Aperitif    | Cockney dentures                           |

|                   |                                                 |
|-------------------|-------------------------------------------------|
| Onion bhaj        | French canal boat skipper                       |
| Indelible         | Person who cannot be persuaded to eat bagles    |
| Scarf             | To eat in Knightsbridge                         |
| Idiomatic         | Ugandan washing machine                         |
| Claustrophobia    | Fear of Father Christmas                        |
| Boloney           | Disappointing skirt length fashion              |
| Boutique          | A startling kind of hardwood                    |
| Loggerheads       | People who are indicted to sniffing lumberjacks |
| Taffeta           | A Welsh goats cheese                            |
| Hydraulics        | To conceal the things you rest your oars in     |
| Trigonometry      | A cowboy's method for locating his horse        |
| Crescendo         | Termination of childcare                        |
| Thrash            | Yorkshire measles                               |
| Boutique          | To heckle wood                                  |
| Cabaret           | A wide range of available taxis                 |
| Rugged            | Wearing a wig                                   |
| To clarify        | To domesticate the Grundies                     |
| Lactose           | The effect of frostbite                         |
| Judo              | Kosher Plasticine                               |
| Dilatory          | Conservative sex-aid                            |
| Doughnut          | Eccentric millionaire                           |
| Artifact          | Pretentious statistic                           |
| Custard           | To swear after stepping into something          |
| Miniscule         | A toddler's playgroup in Liverpool              |
| Ice cream sundaes | Ian Paisley's autobiography                     |
| Stockade          | A meat-based fizzy drink                        |
| Haddock           | An enclosure for sea-horses                     |
| Porcupine         | To regret becoming a vegetarian                 |
| Wholesaler        | Moby Dick's lunch                               |
| Pandemonium       | A musical instrument that won't breed in        |
| Comatose          | Foot has gone dead                              |
| Quaker            | A posh duck                                     |
| Satire            | Seated in a more elevated position              |
| Cantilever        | A switch on an electric horse                   |
| Trolley           | An abundance of trolls                          |
| Hobgoblin         | Eating stoves                                   |
| Lampoon           | A device for whaling at night                   |
| Cantankerous      | A chain of shops that sell tanks                |
| Sweet-trolley     | An abundance of delightful trolls               |
| Stylist           | A pig directory                                 |
| Creche            | A collision in Kensington                       |
| Picador           | Find your own way out                           |
| Hither            | A snake with a hairlip                          |



## Internet Land Sales

This issue has become a serious threat to the countryside. In the local area, many sites are springing up; Hughenden Valley, Prestwood, Bryant's Bottom, Saunderton x2, Princes Risborough and Church Lane Lacey Green. I am sure that most will be concerned at the way some landowners are selling off parcels of land for sale in small plots to 'speculators' for resale via the Internet. The plots, advertised as potential building land, fuelled by the announcements of higher housing requirements for the South East, are fetching values well in excess of those for normal Green Belt agricultural land.

To counter this threat to the Green Belt, Wycombe District Council has agreed to set up a fund that will allow the acquisition of the land by Compulsory Purchase. Advice is being taken on this approach that, if successful, would give a strong message to the speculators that this practice is not welcome in the AONB. However the proliferation of sites will mean that a step approach to this will have to be taken. Immediate action by the District Council is to pursue statutory article four notices that remove any permitted development rights that include post and fencing erection. In addition advice is being taken through Trading Standards to explore if any investment rules are being broken. If you do see a new site or have any information that could help in any way to prevent the practice then please let me know.

## A4010 Woodway / Culverton Junction

Following the public consultation for the improvements for the junction, the development design work for the junction improvements is progressing with the adopted scheme. This scheme seeks to reduce the accident rates by improving the visibility splay for right turning traffic from Loosley Row and give space for traffic to pass when vehicles are waiting to turn right into Woodway. If all goes to plan with the scheme, which includes bringing in a contract to meet the proposed budget, the work should commence in the next financial year.

## The Speed Limit Review

Regrettably, this review has been the subject of many frustrating delays over the past year. As you will be aware, the County was expecting to review all limits over a three-year period but this has proved to have

been an impossible target, with officers having to revisit areas many times to ensure that each proposed change is properly documented. The good news is that the County Council did agree to keep our area (Area 5) a high priority, so that progress with Tranquil Project would be also kept on track. In keeping with this target, the final advertising of the proposed changes was made in November 2005. A budget of £500,000 has been allocated to the speed limit review for the current financial year. This should enable signing and roundel markings to be in place for Area 5 by April 2006. The County Council's website now contains pages specifically about the speed limit review. The address is:

[www.buckscc.gov.uk/traffic\\_management/speed\\_management/review/index.htm](http://www.buckscc.gov.uk/traffic_management/speed_management/review/index.htm)

## The Village Design Statement

The final stage for adoption of the Statement as Supplementary Planning Guidance has commenced with Wycombe District Council. One recommendation that the urban area remains unchanged will be important when the land sale applications begin to come forward.

## Getting Closer to Communities and The Princes Risborough Study

Some may have heard of this County Council initiative (GC2C) that looks to provide a more local approach to delivering services. This means that parishes will be linked by 'cluster' where it is seen that they have a common need for service delivery. For Lacey Green Parish, it probably means closer links to Princes Risborough and its surrounding villages, as the town is likely to be central to the new 'cluster'. It is therefore also important that the parish has an influence on the Princes Risborough study that is looking to plan the town facilities and expansion up to 2035.

If you would like further information on this or any other subject then please do contact me and I shall try to help.

**Paul Rogerson, County Councillor**  
**01494 488315**

The less you know the better you sleep

Russian proverb quoted on BBC2





## Windmill Artists Bistro & Art Exhibition

It seems to have become another "annual event" in our village social calendar.

On a damp, cold November Day, villagers and friends came to the hall to admire, criticise or smile at our artistic attempts – who cares?!

When we sat down, we were waited on and indulged ourselves with delicious food, glasses of "vino", cups of tea and coffee, ably provided by Rachel, Peter and Val's super Bistro. We met up with friends and gossiped happily for an hour or two.

The next one is November 11<sup>th</sup> 2006.

Di Bradley

---

## Loosley Row & Lacey Green Horticultural Society

They say history does not repeat itself. Well it did at the annual Loosley Row & Lacey Green Horticultural Society Show in September. Mr. Bill Ludlow walked off again with both the **Ploughman Cup** for the Vegetable Section and the **Hughenden Cup** for the Vegetable, Fruit & Flower section combined. Mrs. Linda Storey gave Bill a close run second in the **Hughenden Cup** by taking the **Floral Cup** in the Flower section. Alison Shreeve also should be recognised for an excellent number of fine vegetable entries.

Mr John Bumett not only took the Salver in the Domestic section, but seemed to acquire a feminine following for his prowess in the kitchen (watch it Laura). He also gained the **Bill Cleaver Memorial Trophy** for his Gingerbread pieces. Unfortunately a few less entries than last year's record number due to clashes with holidays from some of our stalwart members. This year the date to remember is Saturday the 2nd. September 2006. NO HOLIDAYS PLEASE!

I would like to thank what seems to be a permanent team of Judges with Graham Hollingdale effortlessly judging masses of tomatoes, beans and enormous onions weighing nearly 21b. Graham's wife, Chrissie, finding minute flaws to decide on the best of some terrific flower displays, which came down to the smallest detail. Joy Button was joined this year by Brenda Forty in the Domestic section. As the entries have grown, a second judge was desperately needed.

As in previous years, the judges were very appreciative of the standard of entries. I could see no difference at all, they must have highly tuned taste buds. It was unfortunate that some entries did fall foul of the rules and as this is a small village show we will be reviewing the rules for 2006. I anticipate increasing the size of the flower arrangement to 16 inches from 12 inches. We shall also either allow a separate class for jellies or allow them

into the jam class. So, for those who were affected, please take heart that we did learn from the judges having to abide strictly by the rules. So please next year, try again.

Although I write of the excellent entries and the largest onions, really every entry this year was a winner. As the weather patterns seem to change I wondered if whether there would be any entries at all on the day. I was struggling myself, but I suppose all Show Secretaries do that. So I will give all who entered a First Prize for making my day worthwhile. So I can rest now till March, when it all starts again, and if you think that you don't know gardening!

Finally, I would like to say a big thank you to Colin Hobdell, who was the previous Show Secretary and has been a pillar of advice and support for the last two years of my tenure of the job. Colin and his wife are planning to leave the village and I am sure all the Society members will join me in wishing them both a happy continuing retirement in their new home.

We have continued with our alternate monthly meetings in the Village Hall. Talks illustrated with beautiful photo slides on South American Cacti in November and plants in the Himalayas in January.

The A G M is on Wednesday, 15th March, at 8pm in the Village Hall. A short formal meeting, to be followed by an illustrated talk on the history of Covent Garden Market. With the exception of Colin Hobdell, the existing Committee is willing to carry on, but we really do need the encouragement of one or two new members and a good turn out on the night.

2006 is the 25th anniversary of the Society and we plan some special events to mark this.

David Fitt, Show Secretary

# Lacey Green Singers with children from St John's School

ANNUAL VILLAGE CHRISTMAS CONCERT

SUN 11th DECEMBER 2005

As usual, there was a packed house for the annual Christmas Concert. It was apparent that everyone was in a good mood, even before the mulled wine and minced pies were served. Those pensioners seen wearing the special "glow sticks" intended for the children, certainly added to the festive atmosphere, as did Lacey Green Singers, who processed in carrying Christmas lanterns.

The programme consisted of the usual mixture of carols for everyone and choir carols, including an unusual Jazz style carol - "Follow that star". Cathie Kaye the conductor, had persuaded the choir to learn and perform "Break forth, O beauteous heavenly light", from Bach's Christmas Oratorio, without copies. She also continued the trend of using choir members as soloists. Special thanks go to Alan Gibson and Charles Leigh Dugmore. The choir is most fortunate to have members of such a high calibre.

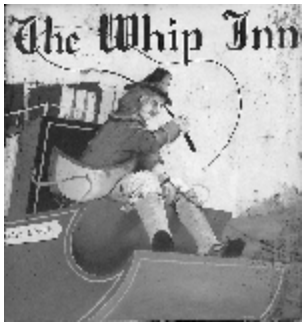
Mrs Kathleen Stansfield was again present, with the handbell ringers from St. John's School. In spite of only having a few rehearsals they performed beautifully. It is a special delight to hear the clear sound of the bells at Christmas.

In a departure from usual, the school choir delighted the audience with a selection of songs from the Second World War, which were to form part of their Christmas Show. Their teachers, Miss Curtis, Mrs Spicer and Mrs Thomas, are to be congratulated on a most enjoyable performance.

Lacey Green Singers are always pleased to welcome new members, especially men. Rehearsals are on Thursdays from 8.00 to 10.00pm in the school hall. The next concert on May 13 in the Barn at Piggotts will be favourites from Gilbert and Sullivan. Tickets will be available from choir members nearer the time.



## Around Our Local Pubs



Well, we survived another year and by the time you read this we will be some way into 2006 looking forward to some spring flowers and some warmer weather. But to briefly look back, then I have to say that

2005 was a good year at The Whip both for Julie & I, and hopefully our customers.

We had two very successful Beer Festivals with Jazz & Barbeques. We put another hand-pump in so we now offer 5 Real Ales and in total had 200 different guest ales available during the year. I believe that some customers only saw about 10 but Steve James can verify that there were another 190 - and he enjoyed every one of them. The Golfing Society managed two outings this year when the golf was poor but the curry and ale were excellent. The standard can be judged by the fact that after 72 individual attempts at hitting a green, for the nearest the pin trophy, no-one has yet managed it. I may have to change it to nearest the fairway for the next event. But so they get their names in print, I can confirm that Brad Hyde with a magnificent effort won the Winter Classic, which, due to torrential rain, resembled Aqua Golf, and the dubious winner of the Fair Weather Summer Softies event was Tim Mcgivalary who confirmed his Mexican ancestry by eating whole chillis after his popular victory.

On another sporting front, we have been actively supporting London Wasps and have been running a coach to & from the Whip to the Causeway stadium. If anybody is interested in joining us, drop in for a beer and I will explain how it works.

A great deal of our year was dominated by Sam & Smeagol, the Jack Russell pups. I am sure most of you would have seen them around the village being pursued by something resembling an arthritic Orang Utang (that's me, not Julie). They finally seem to have slowed down eating the furniture but not before reducing the Chaise longue to a chaise short and the sofa to a bean bag.

The Whip Inn choristers gave several impromptu performances during the year and I am sure they will continue in 2006. Unfortunately Choirmaster Quilt missed a couple of performances whilst looking after his pet Robin, which was nurturing two very small eggs.

The year ended in style with a great New Years Eve party hosted by Slim Boy Slim AKA Tim Page, who

managed to get even the arthritic gout sufferers to leap about like teenagers.

So there you have it, another year survived and enjoyed, for that I have to thank my customers, but particularly my staff for their hard work & support. Our special thanks go to Ian, who unfortunately is leaving us in the New Year. In this day & age it is a privilege to work with someone as loyal and honest as Ian, so we wish him and his family all the best for the future.

Here's to a healthy wealthy & happy 2006. See you in the pub.

**Nick & Julie**

## Supernannies ?

In the 17 years Kindergym has run in this area, I have learnt one important fact. Bringing up children is not easy! Classes, organized by age, start when children are mobile. The children explore the wide range of equipment, and the staff is there to help, encouraging the hesitant, slowing down the over confident. It is a supportive environment where you can introduce rules of behavior, as well as individual development, and have fun! The 2 year old class is more structured as the children learn to take instruction and meet the challenges of more complicated equipment.

In these classes the heroes are the parents who are continually on duty. Being with your child is an endless joy, but there are continual hurdles to overcome; not sleeping, teething, not doing as you say, not doing anything, tantrums (sometimes Mum as well as child!), Every stage seems to last for ever,

At Kindergym, not only can we offer support in a friendly environment, but you can see that everyone is or has been in the same boat. At three and four the children attend alone, and we enjoy their individual characters, as we introduce numbers, shapes and imaginative play. All your hard work was worthwhile and of course it does not stop. It changes as your child develops. I bet those Supernannies, however calm and controlled on television, had the same struggles with their own children!!

Lets hear it for Supermums - and Dads of course!! We look forward to welcoming more of you to Kindergym! Telephone : 01844 344441.



# Financial Planning

You can't take your money with you when you leave this world but most people are comforted by the fact they will be able to leave an inheritance to their children and grandchildren.

However, I am sure you all know that it is disappointing to learn that the government will charge a steep 40% on your taxable estate if this exceeds a certain level. Many people are not too concerned about inheritance tax (IHT) as this surely is for the ultra wealthy.

Well, the threshold after which IHT is payable is currently £275,000. This is not really a high figure when, for example, you take into consideration the value of your house. The chances are, for a start, its value is far in excess of this figure and, even if it isn't, by the time you start adding on all your other assets – savings, investments, cars, personal belongings, the value of the estate in total is in excess of £275,000.

So, simply put, add up all your assets, subtract the threshold of £275,000 and then apply 40% to the balance and you have the IHT potential liability.

However it is not all doom and gloom. IHT is often called voluntary tax because you don't necessarily have to give a slice to the Inland Revenue. With careful planning, IHT can be reduced. Some of these measures are quite simple and require you only to make minor adjustments to your will or start making gifts to friends and family. Other measures are more complex and will require good professional advice.

In order to cut the tax bill, there are some exemptions and gifts allowed. For example, there is no IHT payable on most transfers between most married couples and every person is allowed to give away £3,000 in any tax year. If you have not previously used this exemption, it can be backdated by one year, so you can give away £6,000 in the first tax year. With regards to gifts, you can for example make unlimited number of small gifts to different people up to a maximum of £250 in any tax year and parents can give up to £5,000 to each of their children as a wedding gift.

You can make potentially exempt transfers above the limits provided you live a further 7 years. If you die within 7 years, the asset will be included in the estate for IHT purposes. For large gifts over £275,000, the extent of the liability reduces before the 7 years have

passed. This is known as taper relief. If you die within 3 years of making the gift, the gift will be liable for the full amount of tax. This is reduced by 20% per year thereafter.

As mentioned, drawing up a valid will will not only do to ensure your estate passes to those you specify, you can also use it to include specific gifts for those other than the surviving spouse, thereby reducing the taxable size of the estate.

Life assurance can also have a part in IHT planning. By taking out a life assurance policy, a lump sum would be paid out when you die, which in turn could be used to pay the IHT liability.

There are therefore ways of reducing IHT and this article cannot alone address all the issues. It is important therefore to seek professional advice. In some cases, if no action is taken to reduce IHT liability, then your beneficiaries will have to pay the tax before the estate is released to them. This could mean selling the family home if this is the largest asset, just to cover the tax bill. Charming!

**Steve Wilkinson**

---

## Crime Fighting Tips from a reformed burglar

Use timers on lights to switch them on and off at different times.

Lock doors and windows when you are out and don't leave keys in windows.

Gravel paths are a noisy deterrent for a would-be burglar.

Install lights with a PIR (infra red) sensor outside the house.

Prickly bushes such as pyracantha and roses at vulnerable points around the garden and a trellis on top of fences do deter intruders.

Securely lock all tools and ladders in outbuildings.

Keep your garden tidy. Untidy gardens usually indicate lack of care over security.

"Beware of the dog" signs are useful (even if you don't have one)

Tell neighbours if you are going to be away.

Don't leave keys under the doormat.

An alarm is a must, if you can afford it.

Window trembler alarms are a low-cost standby.

# Happy Wanderers Walking Club

**Sunday 18th December 2005**

21 of the Happy Wanderers met at the Millennium Village Hall after a sharp frost over night. A great day for the walk with clear blue skies allowing clear views over our Chiltern countryside.

The circular local walk took us across the fields to Turnip End, down to Grubbins Lane, then up the steps to Redhouse Farm. We stopped here for a few minutes to get our breath back, then on to Monkton Wood. The bright sunshine made for a contrast of colours with the

carpet of autumn leaves. We came out of the wood at Lilly Bottom Lane to continue across the Widmere Farm paddocks. While offering help over one high stile, some of our party were making friends with a pony. A stable girl leading a horse to his paddock remarked "Mind the back end - that one kicks!" Luckily it did not.

So back to the Hall, where our thanks were offered to Peter Green for leading the way and Doreen De Grey for bringing up the rear, making sure no one got lost.



**At Turnip End, looking down towards Grubbins, which becomes Lily Bottom Lane**



**Sunshine in Monkton Wood in friendly interesting company – what better could one wis**

**Ron Goodearl**



# Stargazing 2006

This is the name of the latest book by two internationally known writers and broadcasters on astronomy and space, who both live in Loosley Row, Heather Couper (yes, the lady we see on TV) and Nigel Henbest. Heather was one of the small number of Millennium Commissioners who sanctioned half the cost of our new village hall – and she spoke from the platform on its official opening day. They have each published more than 30 books.

Nigel is a Director of Pioneer TV Productions, which they set up in 1990 and is now one of the biggest factual production companies in the UK. Its 2005 programmes included Channel 4's drama-documentary on Krakatoa, a rapid-reaction documentary on *The Tsunami*, a series called *Life before Birth*, and one called *2005: Year of Disaster*. Already this year, it did one on the Challenger Space Shuttle explosion.

Their latest book is a month-by-month guide to the northern night sky - a good reference for Ireland and most of Europe, as well as Britain. For those of us who have developed recently an interest in this subject (possibly from Chris Dignan's articles in Hallmark and his talks at the village hall)) it also has an excellent guide to choosing equipment.

---

## Andy's 'ints

### Leaks

Leaks of any kind around your home can present a problem, especially before they are found. Water from both supply pipes and waste pipes can remain undiscovered for many years – smell is probably the first tell-tale sign that something is leaking. There should not be a smell of damp plaster/masonry in any room. Look for patches or discoloured areas on wall or ceilings and, if you are unsure of the cause, ask someone with a damp meter to check the moisture content.

If you are on a water meter, check the meter when none is being used in the house to make sure the meter is not going round. If the meter is going round it may indicate a leak in the pipe supplying your home. As a householder, you are liable for any water used after the meter and a leak in the underground pipe can easily generate a bill of £1000's between readings by the water board. If you are not on a meter, hold a stick or

rod on your ear and onto the cold tap in your kitchen. If no water is being used, there should be no sound. If there is a hissing sound, you may have a leak in the mains supply pipe and this should be investigated. It could be washing away foundations.

Gas leaks are fairly obvious because of the smell. If you have a gas appliance, there should not be any detectable smell of gas. If you do smell gas, get your system checked for leaks. If you are not able to smell, there are detectors on the market which will do the sniffing for you and they cost under £100.

Flue leaks from heating appliances are more difficult to detect. Deadly Carbon Monoxide (CO) is odourless and if your heating appliance is in a living room (as opposed to a room you would not remain in for any length of time) I would recommend you fit a CO detector. Many different types are available and they are triggered when CO present reaches dangerous levels. Fit the type that give a continuous readout of CO levels and that way you will receive an early indication that all is not well, before you become 'not well'. CO is also present in your car exhaust, if you suspect the exhaust is leaking or it is noisier than usual have it checked out. If the exhaust is leaking there is a risk of fumes being drawn into the car when it is stationary or in slow-moving traffic.

Oil leaks from a buried supply pipe from an oil tank to an oil boiler are not easy to detect. As an indication of maximum oil usage, if you use your heating for 6 hours per day and live in a small house your monthly oil usage should be about 200 litres. For a large house this will be about 500 litres. If you are using a lot more than this - pro rata the hourly usage - the tank and supply pipe should be investigated.

To be continued.....

**Andrew Stone**

---

It is possible that a man could live twice as long if he didn't spend the first half of his life acquiring habits that shorten the other half



EC McKenzie from *14,000 Quips and Quotes for Writers and Speakers*

## 81<sup>st</sup> Over-60s Club

### First Tuesdays 2pm at Village Hall

Once again, our members have been treated to a full blown Christmas lunch by Lynne from the Black Horse! Thank you, Lynne, for laying on such a delicious meal. Plus all the extras – hats, crackers, chocolates and festive tableware. We, one and all, are immensely grateful to you for your continued support and generosity to our club.

After lunch, pupils from St John's School entertained us with a selection of War Time songs from their Christmas programme. Thank you, children and staff, for a most delightful performance.

The afternoon finished with a welcome cup of tea and a slice of Pat Brooks' excellent Christmas cake.

As there was no meeting in January, Ursula, Pat, Miki and Joyce wish you all a very happy 2006 and thank you for all your festive wishes. We look forward to seeing everyone on Tues 7 Feb and 7 Mar at 2pm.

We would also like to thank all our other helpers – that is the drivers, cake-makers and furniture movers. Without these volunteers, we could not continue to run the club.



**Minnie Greig and Connie Baker having enjoyed their Christmas lunch**

We are always delighted to welcome new members. Over sixty? - come and join us for afternoon tea and a chat.

**Carole Knight**

## Visited The Environment Centre yet?

On Holywell Mead in the heart of High Wycombe, by the open-air swimming pool, there is a new addition to the "must visit" places in the town. It is the former café building of the pool, now opening on to the car park, transformed into The Environment Centre.

There is a meeting room upstairs, and an exhibition hall downstairs. At weekends, there are simple activities and games for children, as well as the observation beehive, surrounded by a small exhibition about beekeeping. You can even buy local honey there.

The exhibitions downstairs are geared to making us all think about our impact on the planet we live in – coming up are exhibitions about sustainable transport, art from waste by local people with Special Educational Needs, Pollination, and "Our Rye" – photographs all taken within 500m of the Centre. The ideas come from our team of volunteers who run the Centre. There is always an array of leaflets on display on many topics to take away if you wish.

Volunteers are always needed – to sit with the exhibitions, to create the exhibitions, to lead activities, to help in the office, to help cultivate our allotment in Bassetsbury Lane, to lead nature walks around the Dyke! If you fancy joining the team, come along to talk about it!

The "Cutting the Carbon" exhibition opened on 4 Feb and will continue until 12 March.

The Centre's opening hours are restricted because we can only open when there are at least three volunteers on the premises, but the hours are gradually increasing. Tuesdays: 11.30 – 1.30, Thursdays: 11.30 – 3.30, Saturdays 11 – 3pm, Sundays: 2.30 – 4.30. We like to open on Wednesdays in school holidays.

Make a New Year's resolution – to help save planet Earth by giving the Centre your support!



**Always forgive your enemies  
- nothing annoys them so much.**

Oscar Wilde

**NEWS FROM ST JOHN'S CHURCH**  
**(Rector – The Reverend Denise Critchell)**  
Serving the village communities of Lacey Green, Loosley Row and Speen

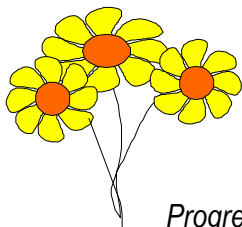
Dear All

St John's church was beautifully decorated again for the Advent services, which started with another delightful Christingle service attended by many families and children who had helped to make the Christingle Light of the World orange and sweetie decorations the previous day, in the kitchen at the vicarage. The collection raised from this service amounted to £380 and was donated to the Childrens Society charity.

The candlelit Carol Service was also memorable, as was the Crib service and Christmas Eve services, all well attended and enjoyed by young and old alike. Many thanks to all those who worked 'behind the scenes' to enable the smooth running of all the events.

If you did come to church at Christmas time, don't forget that Jesus is for Life, not just for Christmas, and we look forward to welcoming you again in church in the near future.

Looking forward to this year, we have some exciting events planned....



**SPECIAL EVENTS**

*Mothering Sunday 26<sup>th</sup> March*  
At the 10.00am service all women to receive flowers.

*Progressive Supper on Saturday 25<sup>th</sup> February at different houses in the village,*  
Contact Graham King for further details on 01844 343910

*A Pancake Party on Tuesday 28<sup>th</sup> February at St John's School hall.*  
Fun, games and fellowship, see notice board for further details.

Ash Wednesday – Holy Communion on 1<sup>st</sup> March at 8.00pm

*A Lent Course – Mission and Mercy – will be held at the vicarage on five consecutive Monday evenings*  
starting 6<sup>th</sup> March, 13<sup>th</sup>, 20<sup>th</sup>, 27<sup>th</sup>, and 3<sup>rd</sup> April.

*Palm Sunday 9<sup>th</sup> April a special Holy Communion service.*  
Also the Annual Parochial Church Meeting in the church at 11.30am.

*Maundy Thursday 13<sup>th</sup> April 8.00pm*  
Devotional Service followed by Holy Communion.

*Good Friday 14<sup>th</sup> April 10.00am Family Easter Workshop followed by Easter egg hunt at the vicarage. 2.00pm*  
– 3.00pm Easter Meditation Hour with Easter Hymns.

*Easter Day 16<sup>th</sup> April 8.00am service.*  
10.00am Easter Celebration Holy Communion  
6.00pm Choral Evensong

Monday 19<sup>th</sup> June - Team Confirmation with Bishop Allan at St John's church.  
Please contact Denise for further details.

Another Alpha Course will be starting in Lacey Green after Easter. Please come and join us for discussion and debate about the Christian faith, questions of Life and the relevance of faith today. Further details on the notice board soon or contact Denise.

The Youth Group run at Collins Farm is held every first Friday evening of the month starting at 7pm and is aimed at 11yr olds and above. It provides an evening of learning through bible readings, and also fun, games and refreshments! For further details please contact Lizzie or Hugh on 01844 342173.



The Toddler Praise group meet at St John's church every Tuesday afternoon in term time, starting at 2.00pm for about an hour. The children are encouraged to listen to a short Bible story, and participate in prayers and songs. Afterwards the children join in an activity related to the story and then enjoy refreshments with the grown ups. Children from birth to school age and their grown ups are all welcome!

The Home Groups and the Prayer meeting group are still going strong, providing learning, encouragement, support and friendship in comfortable surroundings. If you are interested in joining a group please contact Denise on the number above.

Finally, do come and see the beautiful new Lenten Banner, which has been made by some very skilled ladies in the village – wonderful!

### Regular Services

The times and format of weekly services at St John's are listed below for reference:

#### SUNDAY

|         |                          |                                                                               |
|---------|--------------------------|-------------------------------------------------------------------------------|
| 8.00am  | Holy Communion (1662)    | 1 <sup>st</sup> , 2 <sup>nd</sup> & 4 <sup>th</sup> Sunday                    |
| 10.00am | All Age Family Eucharist | 1 <sup>st</sup> Sunday of the month                                           |
| 10.00am | Parish Communion         | 2 <sup>nd</sup> , 3 <sup>rd</sup> 4 <sup>th</sup> (&5 <sup>th</sup> ) Sundays |
| 6.00pm  | Choral Evensong          | 1 <sup>st</sup> Sunday of the month                                           |

#### TUESDAY

|        |                                                         |  |
|--------|---------------------------------------------------------|--|
| 9.30am | Communion Service in the Lady Chapel at St John's       |  |
| 2.00pm | Toddle Praise – each Tuesday afternoon during term time |  |

#### WEDNESDAY

|         |                                                                 |  |
|---------|-----------------------------------------------------------------|--|
| 10.30am | Group Communion Service at St Mary's Church, Princes Risborough |  |
|---------|-----------------------------------------------------------------|--|

1<sup>st</sup> and 3<sup>rd</sup> Sundays      Family orientated service, all age family worship

**Sunday School**            2<sup>nd</sup> and 4<sup>th</sup> Sundays, held in the Upper Room at the church.  
For more details contact Jenny King on 01844 343910

Full details of all services, articles and detailed information about St John's Church is published in the Parish Magazine 'Viewpoint' which is published monthly and also on the notice board outside the church.

Be blessed by your Parish Church – we look forward to meeting you at our lovely church -you are always welcome, so do come and join us.

**Andrea Bennett**            ☎ 01844 274550

---

## Lacey Green Windmill

In 2006, the windmill will be open on Sundays and Bank Holiday Mondays from Monday 1st May until Sunday 24th September from 2.30 pm to 5.30 pm. Admission is £1 for adults and 50p for children. On Sunday 14th May, we will hope to have the sails turning for National Mills Day. As always, this will depend on suitable weather.

To enable the mill to be open to the public, we do need some more volunteers to join our dedicated team of wardens. It is not necessary to be an expert on windmills, but an interest in the subject and the

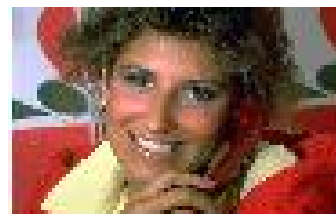
enthusiasm to show the windmill to all sorts of visitors is all you need. I only ever ask our wardens to attend on a maximum of two afternoons each year.



For further details please contact Michael Hardy on 01844 343560.

**Michael Hardy, Honorary Secretary  
Windmill Restoration Committee**

# Village Directory



| <b><u>Organisation</u></b>                  | <b><u>Contact's Name</u></b>                    | <b><u>Contact's 'phone no.</u></b> |
|---------------------------------------------|-------------------------------------------------|------------------------------------|
| 81 <sup>st</sup> Over-60s Club              | Carol Knight                                    | 01844 343093                       |
| Happy Wanderers Walking Club                | Roger Brudenell                                 | 01844 346893                       |
| Horticultural Society                       | Terry Fendom, Chairman                          | 01844 342636                       |
| Jingle Tots                                 | Jenny Stothard                                  | 01844 344441                       |
| Karate Club                                 | Richard Peace                                   | 07768 896078                       |
| Kinder Gym                                  | Jenny Stothard                                  | 01844 344441                       |
| Lacey Green Parish Council                  | George Crombie (Sec)                            | 01494 488240                       |
| Lacey Green Productions                     | Val Brookhouse                                  | 01844 344207                       |
| Lacey Green Singers                         | Jane Brown                                      | 01844 346071                       |
| Lacey Green Sports Club                     | Jane Oakford (Sec)                              | 01844 346295                       |
| Lacey Green Twinning Assoc                  | Not currently active                            |                                    |
| Lacey Green Village Hall (Bookings)         | Karen Hodgton                                   | 01844 274254                       |
| Lacey Green Windmill                        | Michael Hardy                                   | 01844 343560                       |
| Loosley Row & Lacey Green WI (afternoons)   | Jill Baker                                      | 01844 275442                       |
| Pilates                                     | Sue Keeling                                     | 01844 346656                       |
| Police (Area Beat Officer)                  | Moira McKinny                                   | 01296 396099                       |
| Residents Association                       | Not currently active<br>(Laurence Rostron, Sec) | 01844 343276                       |
| St. John's Church                           | Rev Denise Critchell                            | 01844 347741                       |
| St John's School Parents Association        | Sue Robinson                                    | 01844 342574                       |
| West Wycombe Decorative & Fine Arts Society | Ginnie Brudenell                                | 01844 346893                       |
| Whiteleaf Bowmen                            | Dave Evans                                      | 01494 538235                       |
| Windmill Under 5's Playgroup                | Karen Hodgton                                   | 01844 275009                       |
| Windmill WI (evenings)                      | Stella Boll                                     | 01844 347268                       |
| Yoga Group                                  | Annie Cahill                                    | 01844 343643                       |



# Village Diary Feb 15 – May15 All events at Village Hall unless otherwise specified



|        |                                                                                                                                   |                   |
|--------|-----------------------------------------------------------------------------------------------------------------------------------|-------------------|
| Feb 18 | Windmill Under 5s Indoor Car Boot Sales                                                                                           | 1.30pm            |
| Feb 26 | Happy Wanderers' medium local walk following AGM                                                                                  | 11.15 for 11.30am |
| Feb 28 | WI Pancake Day, with tossing, Bring & Buy, pancakes & coffee                                                                      | 10.30am           |
| Mar 1  | Windmill WI (1st Wed of month)                                                                                                    | 7.45pm            |
| Mar 4  | Auction of Promises at School, including silent one for those who can't attend. Nibbles & bar. Details from Sue Robinson (342574) | 8-10pm            |
| Mar 7  | 81st Over 60's Club (1st Tue of month)                                                                                            | 2pm               |
| Mar 8  | Happy Wanderers' short walk (2nd Wed, Village Hall car park)                                                                      | 10.30 am          |
| Mar 9  | Loosley Row & Lacey Green WI (2nd Thu, except Aug)                                                                                | 2pm               |
| Mar 11 | Windmill WI Spring Jumble Sale. Bring 10am-12 noon. Please buy back at                                                            | 2pm!              |
| Mar 14 | Village Hall AGM                                                                                                                  | 8pm               |
| Mar 15 | Horticultural Society (3rd Wed of Jan, Mar, May, Jul, Sep, Nov)                                                                   | AGM 8pm           |
| Mar 26 | Happy Wanderers' normal walk #                                                                                                    | 10.30am           |
| Mar 27 | Belly Dancing Taster Class at School, including Turkish food                                                                      | TBA               |
| Apr 4  | 81st Over 60's Club (1st Tue of month)                                                                                            | 2pm               |
| Apr 5  | Windmill WI (1st Wed of month)                                                                                                    | 7.45pm            |
| Apr 12 | Happy Wanderers' short walk (2nd Wed, Village Hall car park)                                                                      | 10.30am           |
| Apr 13 | Loosley Row & Lacey Green WI (2nd Thu, except Aug)                                                                                | 2pm               |
| Apr 26 | Happy Wanderers' normal walk #                                                                                                    | 10.30am           |
| May 2  | 81st Over 60's Club (1st Tue of month)                                                                                            | 2pm               |
| May 3  | Windmill WI (1st Wed of month)                                                                                                    | 7.45pm            |
| May 6  | Great Egg Race at School. Afternoon of family fun.                                                                                | TBA               |
| May 10 | Happy Wanderers' short walk (2nd Wed, Village Hall car park)                                                                      | 10.30am           |
| May 11 | Loosley Row & Lacey Green WI (2nd Thu, except Aug)                                                                                | 2pm               |
| May 13 | LG Singers concert <i>Favourites from Gilbert and Sullivan</i><br>in The Barn at Piggotts.                                        | TBA               |
| May 14 | Windmill sails turning for National Mills Day if weather suitable                                                                 | 1.30 & 3pm        |
| May 17 | Horticultural Society (3rd Wed of Jan, Mar, May, Jul, Sep, Nov)                                                                   | 8pm               |

\* Members of the public are always welcome to attend these meetings

# Starting place informed on previous walk - usually within 1/2 hour's motoring of village

## SOME LATER DATES FOR YOUR DIARY including in Speen & North Dean

|        |                                                                     |     |
|--------|---------------------------------------------------------------------|-----|
| Jun 17 | Los Squideros Mexican Band - Speen Village Playing Field<br>Marquee | TBA |
| Jun 18 | Speen Fun Day - Village Playing Field                               | TBA |
| Jul 8  | Speen Fete - Village Playing Field                                  | TBA |
| Jul 15 | Grand Summer Picnic Party at School.                                | TBA |
| Jul 29 | North Dean Fete – Village Playing Field                             | TBA |
| Sep 2  | Horticultural Society Annual Show                                   | TBA |
| Nov 11 | Windmill Artists Bistro & Arts Exhibition                           | TBA |

**CLOSING DATE FOR COPY FOR THE SUMMER EDITION**  
**April 17th 2006**

Published quarterly by the Village Hall Management Committee.  
Printed by Risboro' Printers Ltd., Station Parade, Princes Risborough (01844 344827)