

HALLMARK

The Lacey Green and Loosley Row Magazine



November 2023

Issue 268

Jonathan Piers
PIERS PHOTO

ASTON HEARING



Specialist Ear & Hearing Care Centres

“Aston Hearing has been looking after ears & hearing area for over 30 years.”

We have grown the business organically with the support of a fantastic team, all working hard to ensure our reputation for independence, care, service & the very best audiology is at the heart of everything we do.”

*Kate & Duncan Collet-Fenson
Directors of Aston Hearing*

*Award-winning
Independent . Family Run
Estd 1989*



AMERSHAM
(Old Town)



THAME
(next to Waitrose)



RISBOROUGH
(at Hearing Dogs Site)

Transformational Hearing Care
S I N C E 1 9 8 9

 ASTONHEARING.COM

 01494 733840 or 01844 396057

Welcome to the November edition

Each year the cost of producing Hallmark rises. Though we do get income from our adverts, this does not cover the production costs, so each year we ask residents to contribute to the production costs – and any surplus goes to fund improvements in the Village Hall.

The contributions are entirely voluntary; you will still receive the magazine even if you are not able to contribute. The cost of producing each issue is about £2 per copy - £8 across the year. So we suggest a donation in the £5 to £10 range.

You can pay in a variety of ways. You can give cash or a cheque to the person who delivers the magazine. Alternatively you can put cash or cheque in the attached envelope and return it to Leigh Axe, 4, Woodfield, Lacey Green HP27 0QQ. Finally you can pay by Internet banking to Lacey Green & Loosley Row Village Hall Fund, Sort code: 20-85-73, a/c 30557900, quoting reference "Hallmark Dons". Thank you for your support.



Hallmark futures

The Hallmark team have been thinking about our future. The magazine in its current form is loved by the senior readers and writers but we are not moving with time and technology.

Print costs are rising, at the same time advertisers are cutting back as they can advertise online for little or no cost. Our treasurer tells us that we are barely breaking even.

We have competition from online blogs and Facebook pages that are up-to-the-minute. These are a great place to promote immediate activities that we cannot rival with our 3-monthly print cycle. On the other hand, some neighbouring village magazines that have tried going on-line-only have failed and have brought back their print edition.

We need a new strategy to address these issues and I ask you to tell us your views. For instance we might try a hybrid solution that delivers printed magazines for longer articles and long-term adverts but ties into an online presence that is good for

promoting local events and functions (as well as helping you find your lost cat).

So I am asking you for your views; how do you think Hallmark should evolve in the age of the Internet? Perhaps we need some new contributors with fresh ideas, and/or a younger, Internet-savvy editorial team. Please contact me or any member of the Village Hall committee (contact details on p33).

Windmill repairs

There's a bit of hard news on p7. Apparently there is rot at the base of the timbers that hold up the windmill's sails. The sails will have to be taken down for repair. So we are going to have a sorry-looking windmill for some considerable time.

The Chiltern Society are doubtless planning a massive fund-raising campaign as this will need professional engineers not just enthusiastic volunteers. (The enthusiasts will be needed when it is time to repaint the main structure).

Ukraine

On p19 we have an article on the progress being made by the Ukraine to Chilterns charity and it is nice to read on p30 the success story of some of the ladies who have got jobs and settled into English society.

Christmas

We are now into the run up to Christmas and there will be many events happening. It's a pity that there is no pantomime in the Hall this year. Especially as it is looking nice with the new seating and planters. See the advert on p29 for the Carol singing.

However there is good news as the church organ has just finished a major restoral and this will be celebrated with a concert on Dec 2 (see p25).

Best wishes to Leigh and Yvonne Axe for their recent poor health. I hope they recover quickly

Mike Piercy
Editor

Equus Productions
Theatre without the Drama
www.equusproductions.org

An amateur theatre company founded in 2014 producing plays, musicals & pantomimes throughout the year in a variety of venues in Bucks, Herts & Oxfordshire

We are currently planning our 2024 season, why not come and join the fun?

We love to welcome new people, and whether your interests lie onstage, backstage, front of house, behind the scenes, with costumes, props, lighting, sound, admin, set design, set build & painting, or performing... we would love to hear from you.

We are fully inclusive, love to nurture new talent, inspire confidence and prefer to keep the drama on the stage!

For a friendly chat contact Fiona on artistic@equusproductions.org

www.equusproductions.org

Yoga For Healthy Lower Backs

A specialised 12-week Course

An evidence-based mind body approach to improving lower back function and reducing pain

"Great course and amazing teacher. After 7 years of neck, shoulder and back pain, I now have weeks of no pain and am improving all the time"
Sarah



Courses starting in Sept in Lacey Green and on Zoom

For more information and to sign up, contact
hello@clairapageyoga.com
<https://www.yogaforbacks.co.uk>

Hair 2 Dye 4

by Samantha Woods, ITEC, BACH, NVQL3

All Hairdressing Services Offered

from my home salon in Shootacre Lane, Princes Risbrough, or in your home

Crystal and Reiki Treatments

Crystal facials, Crystal massages, Swedish massages using pre-blended essential oils

I look forward to meeting you.

07843 257 689

www.crystalheartandsoul.co.uk

info@crystalheartandsoul.co.uk

On the Farm

This summer Charlotte was encouraged to enter the Cream Awards. These are national awards run by the British Dairying Magazine. This starts with a written entry, which is judged to create a shortlist. Then three judges visit the farms to make their final decisions. This year the awards ceremony was in the Grosvenor Hotel Park Lane, in early September. With high hopes that she would do well (the judges visit seemed to go well) we scrubbed up and headed to London.

The trip was worthwhile, to her parents' great pride she did well winning two categories. firstly 'Young Dairy Farmer of the Year' and secondly 'Youngstock Health and Welfare Award'. Well done, Charlotte, a good achievement, only achieved with good staff, a number of whom joined us at the Grosvenor. It is interesting how many people in the trade have seen this result and have passed on their congratulations. Charlotte is making a name for herself in the dairying world.

Back at home we have had a busy summer. With harvest weather being a bit temperamental it was a bit challenging at times and the grain quality was affected. So far, our wheat has been accepted by Heygates Flour Mill but with

financial claims on most loads as it is not making full specification. The current price this year is about two thirds of what it was last year, as is our milk price, both have been dropping all year. We have not noticed a significant drop in the price of milk in the shops.

We have had many cows calve this summer and autumn. We would normally sell the beef cross calves once they are about 4 weeks old, to other farmers to rear. However, since June we have been shut down with TB and unable to sell them locally.

TB looks like it must be spread by wildlife as we do not buy cattle in. The cattle that reacted to the test had been grazing in fields near Walters Ash. We must have two clear tests 60 days apart to be able to sell them without restriction. We did one in August, but it wasn't clear. We are testing at the end of October and then just after Christmas. Each test takes 4 days and many hours of staff time preparing. Several other farms nearby (within 5 miles) that had been shut down are now clear, so fingers crossed.

Our improvement work on the cattle winter housing is slowly taking shape. Hopefully it will be complete soon as it feels like the weather is changing and soon the

milking cows will be better housed. The younger beef stock will stay out longer, possibly all winter.

From a drilling point of view, we still have more wheat to plant. The window of opportunity seems to get smaller each year. You cannot plant too early as the weed blackgrass will grow very strongly and be uncontrollable, but leave it too late and the ground can get too wet to work. After October yield potential gradually drops off.

We have just applied for a mid-tier agreement with the help of the Cluster group. This is an agreement for management grants and capital items to protect and enhance the natural environment. This has to be accepted by the Rural Payments Agency (part of DEFRA). We should know early in the new year if it is accepted. It involves for example tree planting, hedge planting, wildflower strips and herbal leys. Fingers crossed again we will know after Christmas, speaking of which we wish you all a Happy Christmas and New Year. We will hopefully be able to report the outcome in the February edition.

Richard West





**LACEY GREEN & LOOSLEY ROW
CRICKET & SPORTS CLUB
RACE NIGHT**

**SPONSORED BY
THE BLACK HORSE, LACEY GREEN**

**Saturday, 25th November 2023
18:00 - Late**

7 RACES | + AUCTION RACE | TOTE

**HOMEMADE CHILLI AND RICE INCLUDED
(VEGGIE OPTION AVAILABLE)**

TICKETS £5

**HORSES AVAILABLE TO BUY AT THE BLACK HORSE,
LACEY GREEN - £5 EACH AND IF YOUR HORSE WINS
YOU GET A BOTTLE OF PROSECCO**



The Black Horse Christmas Menu

Starters

- Creem of Potage Soup
Served with Bread and Butter (if Option Available)*
- Classic Prawn Cocktail*
- Served with Bread and Butter (if Option Available)*
- Roasted Salmon and Cream Cheese Potato
Served with a Salad Dressing*
- Chicken, Potatoes, and Cranberry Sauce
Served with Roasted Vegetables (if Option Available)*

Main

- Traditional Roast Turkey with Figs in Blankets and Stuffing
(if Option Available)*
- Roast Pork Filled Stuffed with Sage Stuffing, Rosemary, Thyme and
Cranberry Sauce (if Option Available)*
- Leek Wellington (Dinner Main)*
- Agonago, Mushroom, Brie, and Spinach Crispy (V)
(if Option Available)*
- if Served with Roast Potatoes, Roasted Vegetables, Yorkshire Pudding and
Gravy*

Desserts

A Selection of Desserts or Cheese Board available on the day

Coffee and Mince Pie Included

Two Course - £28.99

Three Course - £35.99

Available from 23rd November until 23rd December

Booking Pre-Order and 65 deposit required

Call 02084 433002

Diamante detailing

Does your car need a wash and some TLC?

I have experience detailing at car dealerships but have decided it is time to branch out on my own.

- Standard wash: £30 standard car £40 SUVs, vans and 7 seaters
(wash, glass cleaner, hoover)
- Standard wash for cars with pet hair: £50
(wash, glass cleaner, hoover)
- Standard wash +: £45 standard cars £50 SUVs, vans, 7 seaters
(wash, glass cleaner, hoover, upholstery cleaned, interior plastics/leather cleaned)
- Standard wash + for cars with pet hair: £70
(wash, glass cleaner, hoover, upholstery cleaned, interior plastics/leather cleaned)
- Polish (regular) £125 this includes the standard wash +
- Protective polish (lasts at least a year but up to two years) £250 including the standard wash +

All prices are from ... depending on the condition the car shows up in. Any additional charge will be agreed before work commences.

10% off for first time customers!

I am located in Parslows Hillock. I am fully insured.

Contact me, Josie on Josiechestnutt2@gmail.com Mobile number:07749 061470

Windmill WI

Our speaker for August was Jennifer Shaw. Her talk had the title 'Friends against Scams'. This was a very interesting talk and a subject that affects all of us at sometime.

September was our 36th Birthday meeting and we all enjoyed a slice of cake with a cup of tea or coffee. Vicki Scobie came again to help us 'Paint our own Pottery'. This was a very enjoyable evening, we had painted with Vicki a year ago so it was lovely to do it again.

In September some of us also helped with the Macmillan Coffee Morning in the Village Hall.

October was our AGM and we had to decide on a new President. Ann was elected and seconded. We also welcomed a

new member to our Committee Sue Dance. Vivien also presented and we adopted the Financial Statement for 2022/2023. Daphne read the Committee's Annual Report.

We then all enjoyed a glass of wine with nibbles and some social time together.

A few of us went to the Village Hall to see the Equus Productions perform 'The Good Life'. We all thoroughly enjoyed it - a lovely way to spend a Saturday afternoon.

This month on 21st October we are having our Jumble Sale in the Village Hall 2pm - 4 pm..

Next month our speaker will be Jaime Frow helping us to de-clutter - should be interesting.

December will be our Christmas meeting and we hope to have a Christmas Meal cooked by some of our members.

We meet at Lacey Green Village Hall, the first Wednesday in the month (except January) at 7.45 pm. If you would like to join us you would receive a very warm welcome. We have interesting speakers and outings.

Ann Bartlett



Lacey Green Windmill

The 2023 season ended at the end of September after another successful year despite having slightly fewer visitors. We have more volunteers covering our warden duties and there was only one closure due to weather conditions.

Our Wardens are a great group of people who are very knowledgeable and enthusiastic about the windmill, we are fortunate to have them all. As ever we need more volunteers to help show visitors around the windmill, to help with keeping the site tidy and publicity to ensure we maintain the high profile of this wonderful building.

As we mentioned in the July 2023 edition we are working closely with the Chiltern Society to plan a major fundraising campaign as we need to repair the mill.

The windmill is inspected annually and we have been monitoring issues with the stocks and the need to repair and paint the weather boards on the outside of the mill. Sadly this year it is apparent that we must do some major work on the stocks (the stocks support a pair of sails) and various parts associated, due to rot pockets from water getting into the wood.

To do this the sails have to be removed. This will allow for a full inspection to see what work is required to repair the workings of the windmill.

The committee have been working with IJP Restorers who will be doing the work and a cherry picker and crane will be on site to help remove the sails. The sails will be stored on site and we plan to paint them while they are on the ground so if anyone is

handy with a paint brush we would love to hear from you!

We will keep you updated with the work, please check our website as we will post information here. If you want to be involved in our fundraising efforts we would be pleased to hear from you.

We will open as usual in April next year even if the 9 meter long sails are not back on the windmill. It will certainly give a different dimension to the windmill.

Supporters are always welcome, if you have any spare time and want to volunteer please get in touch with Jane: jane@laceygreenwindmill.org.uk.

LGW Committee

VILLAGE ENVIRONMENTAL SERVICES DOMESTIC DRAIN SERVICES

Proprietor: Dennis Cook
Est. 1979

**24/7
CALLOUT
SERVICE**

BLOCKED DRAINS?

CALL US DAY OR NIGHT

FAMILY RUN BUSINESS SINCE 1979
BLOCKED DRAINS CLEARED • REASONABLE RATES
NO EXTRA CHARGE FOR EVENING, WEEKEND
OR BANK HOLIDAY CALLOUTS
CCTV DRAIN SURVEYS
FULL PUBLIC LIABILITY INSURANCE



07850 635 844
01296 624 221 (MESSAGES)



Speen Helping Hospices

SHH was set up in Speen in 2002 to raise funds for and awareness of four local charities. Now, as 2023 draws to a close, we feel the fundraising group can do more for these charities if we extend an invitation to local villages to participate in the group.

All four of our charities need the support of local communities to help fund vital services for people across South Bucks, as they continue to deal with a very challenging financial climate.

We are proposing that the name of the group is changed to **Chiltern Villages Supporting Hospices (CVSH)** to reflect the wider involvement.

Please visit our website www.shh-shop.org, this will give you our history and the range of initiatives we have been involved in over many years.

Would you like to get involved? please contact me.

Luxury Perfume and Cosmetic Sale

SHH has been given exclusive access to a significant amount of high-end perfume by the **Brands Owners** to help raise money for the local hospices that we support. We have Estee Lauder cosmetics, Jo Malone and Tom Ford perfumes and many other products at vastly reduced prices. Go to our website and follow the link through to perfume sales. Christmas present shopping all sorted then!

Since the summer jazz event we have had a wine tasting evening and a charity bridge with afternoon tea and raised just short of £1,000.

Fundraising Challenge - Help raise money for SHH in 2024. We are looking for people to raise money for SHH by taking part in a local fun run/half marathon/cycle race or other event.

If you are planning or considering taking part in a sporting event, would you help others by fundraising for us as you run/cycle/swim?

We will support you on your fundraising journey, we would promote your participation locally and via social media and our website to attract sponsorship.

If you are up for this challenge, now is the time to plan it, visit our website at <http://www.shh-shop.org/FundraisingChallenges.htm> for information.

FUTURE EVENTS IN 2023

Christmas Market - 18th November at the Chapel Hall in Speen. We have lots of new stallholders and a wide range of gifts for Christmas. Come and see us. We are open from 11.00 to 4.00pm.

For further information contact me grainnesuter@googlemail.com or 07778803260.

Macmillan Coffee Morning

THANK YOU THANK YOU

We had our Macmillan Coffee Morning on the 21st September and were pleased to raise £1,098 for this worthwhile cause.

We want to say a heartfelt thank you to everyone who delivered fliers, made cakes, manned stalls and the entrance, made endless

cups of coffee and tea and were there to support us.

Also thank you to all the husbands, partners and friends who dealt with all the tables and chairs including the members of Horti!

Special thanks also go to Stephanie at Buckmoorend Farm

Shop, the Horticultural Society and the W.I. for their very generous raffle prizes. We certainly could not have achieved such a grand total without all of you.

Ann, Daphne and Sandra



BOURNE END SWIMMING CLUB



Offering the perfect balance of a friendly environment with competitive opportunities, our philosophy is to provide all members with the chance to swim to the best of their ability, regardless of their aspirations....

- Flexible swim times with low membership fees
- Up to 4 hours of swimming each week (Spring 2021)
- Using the fantastic pool at Wycombe Leisure Centre
- High ratio of coaches to swimmers
- Swim England Qualified Coaches
- Swimmers need to be at Swim England Learn to Swim Stage 6

BE Involved
BE Inspired
BEJSC

Contact us now for a **FREE** trial

www.bejsc-swimming.org.uk
join@bejsc-swimming.org.uk

Computer Problems? Call 01844 220005 No fix no fee

We support office and home based systems
PC repairs and upgrades
We are based in Princes Risborough
We can collect and return your equipment
Costs from as little as £30
Senior engineer with over 25 years experience
A Microsoft partner



www.jinca.co.uk
established since 2004

OVENPROUD

To book your oven in or to ask for a quote



Call **01494** ★
488744



Ovenproud
"the best you
can get in domestic
oven cleaning"

Ovens • Agas • Grills • Hobs • Extractors • Microwaves • BBQs

Priority Service Ltd



- Cleaning - Regular
- Spring Clean
- End Of Tenancy Clean

01844 275151
Friendly, local and professional service

Karate

Seido Karate is a traditional Japanese style of karate. Seido founder, Kaicho Tadashi Nakamura has distilled the essence of what he has learned about the martial arts in over 50 years of study, practice, and teaching.

The physical training in Seido can be strenuous, emphasising progressive development of strength, flexibility and aerobic capacity. In addition to developing students with the highest level of physical skill, Seido aims to develop individuals of the highest moral character.

At our Lacey Green dojo we offer classes for children and youths from 7 – 16 year olds from 6:30 – 7:30 on Monday evenings.

Adult classes start from 7:30 – 9pm on Monday evenings. We aim to incorporate fitness, technique and spirit into all our classes, within a friendly and supportive atmosphere. For students who want to train more, we have a number of other local dojos who run Seido classes throughout the week.

We are starting a new beginners programme at Lacey Green in November so please contact Sensei Alan Pritchard if you are interested in coming along.

Sensei Alan Pritchard

alan@avtechuk.com

07710 418915



SORRY TO BE ANOTHER RESIDENT THAT KEEPS GOING ON ABOUT PARKING AND DOG MESS

Despite the best efforts of the villagers, some of the parents of children attending St Johns School still think they are above the law and can park anywhere along Main Road/Slad Lane/Church Lane they feel like.

The double yellow lines were put in for a reason, not to park on! The other day at Stocken Farm entrance a tractor and huge silage trailer were trying to turn right into their farm and a bulk food delivery lorry was trying to turn left out of their drive – neither of these vehicles could manoeuvre as an inconsiderate parent had parked on the double yellow lines, at the entrance to the farm.

These markings were put there intentionally - to make a clearway for large farm vehicles to enter their property and as a passing point. It caused gridlock on Main

Road as neither vehicle had the turning circle in the restricted space, no one could pass or get through until the said parent returned to her car and moved on – what a palaver!

Vehicles have been seen to park in front of the entrance to the field in Slad Lane, again, double yellow lines were put there to stop parents parking there, this is an agricultural field and unless you are the owner of the land you cannot possibly know if and when access will be needed.

How would those parents feel if vehicles disregarded any road markings or parking spaces outside their homes and residents local to them mounted the verge and parked on the grass verge outside their houses consistently every morning and afternoon – just because they can, because that is what you are doing, and making a mess in the process of what was a grassed and pleasant entrance and exit to our village.

Dog mess being left by irresponsible owners is an ongoing nuisance.

It seems that the following choices are available to residents:

- 1 Left where the dog deposited it.
- 2 Picked up in poo bags by owners and then hung on trees or hedges.
- 3 Responsibly picked up by owners and taken home to deposit in either a council bin they pass on the way home or in their own household black bin – both actions are acceptable to Buckinghamshire Council.

Options 1 & 2 are absolutely not acceptable behaviour on our village verges or fields.

PLEASE BEHAVE RESPONSIBLY, CLEAR UP AND TAKE HOME YOUR DOG MESS

Name and address supplied.

BETSY WILLIAMS SOLICITOR



INSTRUCTION TAKEN IN YOUR OWN HOME



Betsy is a qualified Solicitor who comes to you to help with:

- **Wills • Probate • Inheritance Tax planning**
- **Lasting Powers of Attorney • Trusts**
- **General elderly client work**

Betsy, you were a real star and made what, for me, would have been a difficult task a really pleasant one due to your kind understanding and patience and of course, your lovely sense of humour! Thanks again Betsy."

Mrs T

"May I say what a pleasure it was working with you. You are a considerate professional, not to mention a lot of fun! Thank you for your unending patience."

Mrs K

Call: 01844 342083
for a free no obligation chat
or email betsy@betsywilliams.co.uk

For more information and referrals - www.betsywilliams.co.uk

Parish Council

We are working with Buckinghamshire Council, Northwest Chilterns Community Board and the local Community Speedwatch Team and the volunteers manning, moving and downloading the information from the MVAS unit to try and make life easier for the parents of the children attending St John's village school.

There are a lot of talks going on behind the scenes, lots of ideas and a lot of people are giving up their time freely to do this.

One of the issues that has arisen, is the many overgrown trees, hedges and footways. The overhanging trees are hiding the

speed signs and MVAS units.

The hedges are causing those wishing to walk to school, to walk closer to the road than may be necessary.

Although Buckinghamshire Council has the responsibility to cut verges, these are usually those adjoining the road and we are trying to convince them that they need to be trimmed more often along the stretch between RAF Space Command and Lacey Green – we are trying!

We have a meeting scheduled to see what can be done about the overgrown footway between the RAF Base and Lacey Green, if it

can be widened it would make life easier for parents with pushchairs and small children on scooters, and the runners and walkers.

Could we ask those residents who have hedges and trees fronting Main Road/New Road to ensure that they are cut back – now is the acceptable time to cut/trim hedges according to DEFRA – walking would certainly be a more pleasant experience if these hedges were cut back.

Thank you in anticipation of your co-operation.

Cllr Cathryn Davies

Amazing Event 28 July

Well it was an amazing event for Lacey Green. I'd been for a walk with my sister who was visiting; returning home via Pink Road we were just level with the Whip when a horse started neighing very loudly from the field opposite. So loudly that my sister, who has her own horses, went to check if it was OK. It kept on making what was an alarming noise, it turned out, in more ways than one.

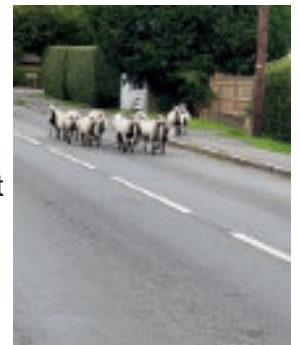
Seconds later a dozen sheep came bouncing over the crossroads from Woodway – probably forced that way by traffic coming up the hill and in a bit of a panic. They were

unaccompanied. I was about to call the police when a couple of young ladies passed me from Pink Road. They told me they were going to try and round them up so I held off. The sheep continued down the Main Road and it was probably traffic coming towards them that made them turn into the open gate to Woodbine Farm.

I thought that would be that but 15 seconds later they were out again coming back towards me. Another lady who seemed to know what was required lured them by shaking a bag she was carrying and the sheep followed her into the front garden of

Chorlton where the girls and I quickly closed the gates. Now secure I left them to it.

Although sheep on Main Road is very unusual, the amazing thing was the horse – I have no doubt it knew something wasn't right and tried to alert us. Anyone had similar?



Leigh Axe

Village Hall Bookings

Time really does fly by! 2023 has been an exceptionally busy year at the village hall. It would seem that after Covid we have all gathered together again to share birthdays and family events. Coffee morning on a Thursday is excellent for a chat. I think they try to put the world to rights! Do pop in.

The hall has many and varied activities on offer: karate, yoga,

pilates, bowls, archery, upholstery classes and indoor cycling! There are still a few slots available if you would like to add to the list. You may only need an hour or two for a regular booking or a one off. Please do call and I will do my very best to help.

As I mentioned, it has been a busy year and whilst this is great news I have had to disappoint many people as dates haven't

been available. Please book now! Finally, thank you to everyone that uses the hall for taking care of it. We really are so fortunate to have such a wonderful facility.

Wishing you all a Healthy and Happy Christmas. With very best wishes for 2024.

Karen Hodghton

Booking Secretary

MOBILE TYRE FITTING WE COME TO YOU!

- Car, Van & High Performance Tyres
- Specialist Wheel Alignment Service
- Truck & Plant Tyre Specialist
- Trade/Accounts Welcome
- Wheel Balancing
- 4 x 4 Tyres



**Stockists Of All Leading
Makes Of Tyres**



T: 01494 565920

AAAAAA TYRETEAM MOBILE

extremeclean.co.uk®

Superior Cleaning and Application of Protectors

**Carpet, Upholstery, Leather
Modern & Oriental Rugs
Curtains**

**Tile & Grout/Stone Flooring
Anti-Allergen Treatment
Specialist Stain Removal
Wood Floor Refinishing
End of Tenancy Cleans**

Paul Brooker

35 Place Farm Way, Monks Risborough
Bucks HP27 9JJ

T: 01844 346379 / 344735

M: 07866 376934 E: jjjp@uwclub.net

www.extremeclean.co.uk

**ChildCare
MALAWI**

ChildCare Malawi is a local micro charity providing practical assistance for disadvantaged children in Malawi and ongoing support for their families. We send an annual consignment of good quality, nearly new items to Malawi for distribution free of charge and would be grateful for donations of:

- ★ Clothes for babies, children, teenagers and adults suitable for a warm climate (not woollens or coats)
- ★ Summer shoes, sandals and flip-flops for all ages
- ★ Bags, handbags and rucksacks
- ★ Simple toys and games (not requiring batteries)
- ★ Picture, story and reference books for primary school age groups
- ★ Towels and bedding (including duvets and blankets)
- ★ Reasonably new smartphones (unlocked)
- ★ Laptop computers and compact digital cameras in good working order
- ★ Wedding dresses and all bridal accessories

Clare Clements ★ www.childcaremalawi.org.uk
clare@childcaremalawi.org.uk ★ 07973 725 060

Buckinghamshire Council

Traffic calming petition

The petition was discussed at a special Community Board meeting on the 7th September.

The following recommendations were discussed:

1. Commission a review of available speed data to determine its suitability as the basis of a formal speed limit assessment.
2. Liaise with the LAT (Local Area Technician), to determine if maintenance could increase the available width of the existing footway.
3. Commission a review of options to improve conspicuity of the 30mph gateway; this could include foliage cutback and enhanced signage.
4. St John's Church of England Primary School should re-engage with the Schools' Sustainable Travel team to update and continue their School Travel Plan.

It was agreed that as a next step actions 2-4 would be further considered and further speed data and other supporting evidence should be collected to help support the proposal.

Roadworks breaches

This year the Council have seen a record number of permit requests from utility firms - such as gas, water, electricity or communication companies - who want to access their infrastructure for repairs or improvement works. The Council knows that these works cause major disruption to road users across the county.

Utility firms have a right to install and repair their networks which are usually under our roads and pavements. The council's role is to grant permits to allow them to

carry out the necessary works and to coordinate these as far as is reasonably practical to try to minimise the impact on the public. Unfortunately, the Council have seen a sharp increase in the number of fines the council has had to issue where they've failed to keep to the terms of their permits. Breaches the council has taken action on include:

- Failing to display correct details on site, including emergency contacts.
- Not taking away temporary traffic lights when they're no longer needed.
- Failing to implement correct traffic management.
- Not publicising proposed works well enough.
- Failing to remove surplus materials and equipment.

It's residents and road-users who bear the impact of these failures, and with the rise in the number of works across Buckinghamshire, the Council are stepping up how they manage these works:

- Introducing seven day working for the 'streetworks' team, who monitor works across the county, so they can respond more quickly to problems.
- Reviewing the whole network to best understand where the busiest places and times are, as some road use patterns have changed since the pandemic.
- When these areas have been pinpointed, the Council will look at insisting on extended working hours and more nighttime and weekend working to lessen the impact on drivers.
- Writing to utilities companies to inform them of the new 'zero tolerance' approach when they fail to keep to the permitted arrangements. Companies will now receive a fine on first breach and will have their permit revoked if a further breach occurs.

- Lobbying Government to increase substantially the amount the Council can fine companies who breach their permits; this is set nationally and, with the early payment rate of £80, is totally insufficient to act as an effective deterrent.

Winter support

Buckinghamshire Council has confirmed its package of support to those most in need as we head into winter. £4.8m of Household Support Fund (HSF) from the Department for Work and Pensions is being used to provide a wide range of support to residents. The HSF money is also being used to provide grants to food and welfare voluntary and community support organisations, to help those struggling with the ongoing cost of living pressures.

The HSF supports the council's Helping Hand service which assesses applications for financial help and navigates residents to the most appropriate support.

In addition to the support provided to eligible families during school holidays through the Household Support Fund, Buckinghamshire Council also runs the Holiday Activities and Food (HAF) programme during the Easter, Summer and Christmas school holidays. Funded by the Department for Education, HAF provides free holiday activities and a healthy hot meal for children in Reception – Year 11 who receive benefits-related free school meals.

Surgery Dates

The team hold regular surgeries across the ward to hear from residents directly. You don't have to book an appointment to attend, however, if you would like to talk privately you can contact the team on team@ridgewaywest.uk

St John's School

Nurturing Potential Within a Christian Ethos



The new term has begun well and we are very much looking forward to this new academic year. We have had some new families join us, a newly redecorated hall and the term is now in full swing! We look forward to sharing work with you over the coming months.

Main Road
Lacey Green
Buckinghamshire
HP270PL TEL: 01844 343521
www.stjohnsce.org
@Stjohnscebucks



Welcome!

We have welcomed 30 new pupils into Reception for this academic year. We are delighted with their progress so far and it has been wonderful to watch them grow in confidence day by day under the excellent guidance of our skilled Early Years team. We are confident that they will continue on this trajectory and become happy, confident and resilient learners.

Harvest

Our Harvest festival service took place on 29th September. Y6 pupils wrote and led the service with Reverend Tony. Thanks to the generous donations of food we were able to make a significant contribution to The Wycombe Food Hub. They are currently helping to feed over 400 families in the High Wycombe area.

Sport & Music

As always, sport and music continue to play an important role in the life of the school. Our Boys and Girls football teams have already played matches. A huge number of pupils continue to take up piano, brass and guitar lessons with the added excitement of RockSteady adding a new and lively element of music making!

Traffic and Parking

I want to apologise for the tiny but vocal minority of our parent body whose parking habits and behaviour do not in any way shape or form, represent our school values and ethos. We are currently exploring a number of possibilities to alleviate the parking situation at drop-off and pick up times as well as supporting campaigns to reduce the speed limit into Lacey Green, and potential for a school crossing, making it a safer place for everyone. I would like to thank Mrs Sidley, who has a child at our school, for her support in helping us to get our message and plans to the parish councillors and Buckinghamshire Council.

Sports Club

So far we are having a great year at The Sports Club. We've had a great Cricket season, the Tennis club are doing amazingly and we had an amazing night at the 80's vs 90's disco fundraiser and we have the race night coming up!

Although The Sports Club and sections are doing well, we were sad to see Windmill's Playgroup fold earlier this year. They have been a great asset to the club since 2004 and will be missed. They have very kindly donated a bench to the club for its years of service to them.

It's not long now until our Race Night which will be on the 25th November! Tickets are on sale from Tom Oakford (07443 518925) or from our sponsor, The Black Horse. You can name a horse and jockey from the pub for £5 and get a free bottle of prosecco if they win!

Of course, all of our plans are dependent on the hard work of our few volunteers and the continued success of our fundraisers. As a sports club and sports ground we are completely self funded and receive no public funding at all. Although the Tennis Club have received some small grants directly from the Parish



Council. Without the few volunteers who keep the Sports Club solvent the village would not have a sports field for recreation. If you would like to find out more or help in any way please get in contact.

It has been great to open the bar this year which has proved popular and we are seeing an increase in bookings for the club. We hope to see this interest continue as the Sports Club is now more available. If you are interested in hiring the hall for

any event please don't hesitate to get in touch at lglsportsclub@gmail.com. We can host parties with or without a bar, or even a meeting place for events and clubs!

Once again a big thank you to everyone who has joined us at the club or volunteered over the last year, without you there would be no Sports Club for the village.

The Sports Club Committee

Cricket Club

The 2023 cricket season at Lacey Green Cricket Club was a great success regardless of the warm weather that had been lacking this summer.

The history of the club is rooted in traditional men's cricket and both of our teams performed admirably this year with the 1st XI finishing 4th and the 2nd XI finishing 6th in Mid Bucks Division 1 and 2.

The season was made special by our very own Nazakat Ali who was the 3rd highest run scorer in the league, amassing 483 runs from 12 innings and our opening right-arm fast bowler Sajid Ali who scalped 31 wickets,

accomplishing 3rd position as the highest wicket-taker.

Over the years, the sheer passion of the club and experience has helped develop young people and their skills. The club has always had a clear vision to promote cricket in the local community with the aim to provide people from all backgrounds and ages the opportunity to play the sport they are passionate about by demonstrating our commitment to Equality, Diversity and Inclusion through various plans and initiatives.

Lastly, we'd also like to take the opportunity to thank our club sponsor Black Horse Lacey Green who've filled a variety of sponsor roles for numerous years. The support of all our sponsors is invaluable in maintaining our Lacey Green ground and keeping our club cricket sustainable and affordable for our members.

So, if you're a local business who's interested in becoming involved with our successful and vibrant community club then please do get in touch.

The Cricket Club Committee

St Johns Advent and Christmas



*The Church of St. John the Evangelist
Lacey Green, Loosley
Row & Speen*

Sunday 3rd December -
Advent Sunday

10.00am Toy Service
3.00pm Advent Carol
Service

Sunday 10th December:
3.00pm Christingle
Service

Sunday 17th December
6.00pm Service of Nine
Lessons and Carols

Sunday 24th December -
Christmas Eve:

10.00am Parish
Communion (Fourth
Sunday of Advent)
3.00pm Crib Service
11.15pm Midnight Mass of
the Nativity

Christmas Day:

10am Parish Communion
with Carols

Tuesday 26th December -
NO SERVICE

Wednesday 27th
December

10.00am Holy
Communion - Saint John
the Evangelist

Sunday 31st December

10.00am - Parish
Communion (First Sunday
of Christmas)

Sunday 7th January 2024

8.00am - Holy
Communion - Book of
Common Prayer
10.00am Parish
Communion - First
Sunday after Epiphany



The Princes Risborough Neighbourhood Team recently conducted a speed enforcement day, visiting a number of locations, including Lacey Green. Over a 30 minute period 2 vehicles were caught exceeding the 30 mph speed limit.

As part of our Rural Crime week the neighbourhood team visited nearby farms discussing crime prevention advice.

Parking around St John's C of E School in Lacey Green is still

proving problematic. Double yellow lines are enforced by Buckinghamshire Council and not the Police. If you wish to report vehicles creating obstructions by parking on the double yellow lines, please report on the FixMyStreet website. Police are working with the School to find long term solutions.

As the nights are drawing in, please remember to keep yourself visible when walking in the villages, a reflective jacket and a torch are a good

recommendation. As part of our burglary campaign "Homes in Darkness", please remember to leave a light on if you are leaving your home unoccupied in the evenings. Timer switches attached to lamps can give the impression that someone is at home and potentially deter a burglar.

If you require any crime prevention advice or a free timer switch please email the team on HighWycombeRuralNHPT@thamesvalley.police.uk

**Jennifer Shraga C8632 | Police Community Support Officer |
Wycombe Rural Neighbourhood Policing Team | South Buckinghamshire LPA**

Emergency: [999](tel:999) | Non Emergency: [101](tel:101) | Mobile: [07980794965](tel:07980794965)



The charity has had a very busy summer. Thanks to incredibly generous support we have been able to provide 2 weeks of SuperCamp fun at the Beacon School in Amersham, for 30 of our Ukrainian children aged between 5 and 12. We have had a fabulous fun family day at Wendover Woods, sponsored by the Mothers Union, and a wonderful day trip to Cliveden, organised by Janet Volk and Sarah Halliday.

This is the second year that the Beacon has donated this opportunity, as well as providing transport to and from the school. The children enjoyed swimming, water fights, play and nature walks, while allowing their parents to continue to work. Ukraine to Chilterns have presented a commemorative artwork to the school, acknowledging their outstanding support of Ukrainian child refugees.

The Mothers Union sponsored an amazing day of 'Go Ape' fun at Wendover Woods. Over 15 families took part with the very brave taking on the high treetops, whilst the less intrepid stuck to the, in my opinion still very scary, easier option! Whichever level was undertaken, all agreed that it was great fun and everyone had a brilliant day!

The day trip to Cliveden was well attended and very interesting. Motts coaches generously supplied transport and Cliveden offered a chance for the guests to see a fascinating part of English heritage, as well as an opportunity to appreciate views of the beautiful Thames Valley and surrounding Chiltern Hills. A big thank you to Janet and Sarah for their tenacity in arranging such a lovely day.



A new term has started for Creative Conversation Classes at Elixir Church. We have already tried our hands at willow weaving and made pottery Christmas decorations, courtesy of www.pot_tasticpottery! Other projects will include mosaicing and Pysanky (traditional Ukrainian egg decorating). If you have any creative skill that you would feel comfortable sharing with the group, please contact me at info@ukraine2chilterns.com.

The Kop Hill climb offered a great opportunity for several of the ladies to sell Ukrainian street food to the crowds. We also had hand painted ceramic sunflowers for sale and a selection of soft furnishings, all produced by our



talented guests. We will also host stands at the Princes Risborough Farmers markets and the Christmas Lights event in November, please do come and say hi!

As always we are indebted to the kindness and generosity of our local communities. Our guests are really making the best they can from such a tragic situation. Many returned to see family in Ukraine over the summer, returning with terrible stories of cities devastated, families decimated and life as they knew it destroyed. Whilst we are providing a safe haven for some, there are many who cannot escape the ravages of this war. There is no sign of an end to the fighting and plans for rebuilding cannot yet be put in place. Our guests and Ukraine will need our support for many months to come.

For more information about our charity, re-matching a local Ukrainian family and our upcoming events, please visit www.ukraine2chilterns.com or contact us on info@ukraine2chilterns.com

HEATHER BREED UPHOLSTERY



I am a local lady, fully qualified in both traditional and modern upholstery work. For a free quote & advice call Heather on 0795 4176401



Please view my portfolio on Instagram or Facebook



@heatherbreedupholstery



HandmadebyheatherB



Alison Gee

Fine Fabrics and Wallpapers
 alisongee.com
 07779081127
 @alisongeearanddesign
 alison.gee@btinternet.com



**DESIGNED
 IN BRILL**

Are you looking to redecorate,
 or just add a few more cushions to freshen up a room?

I have 50 designs
 in many different colour
 options to choose from.

If you can't find the colour
 you are looking for
 I can create the right
 colourway for you.

You are welcome to come
 and view the range
 in my studio in Brill.
 USE

Discount code NEIGHBOUR25
 alisongee.com

I can also arrange the making up for you using local makers.
 You will also receive a neighbourly discount of 25%

Just get in touch!



PILATES CLASSES

Come and experience the
 benefits of Pilates with Sarah
 from Next Chapter Pilates.
 Beginners welcome!



🕒 1-2pm

📅 Every Friday*

📍 Millennium Village
 Hall, Lacey Green

For more info email Sarah at
 nextchapterpilates@outlook.com
 or visit nextchapterpilates.com

*Term time only

Pilates in the Village Hall

Pilates has become increasingly popular over the last few years. But did you know the history of Pilates and what benefits it can bring to all? Sarah Brown, a local pilates instructor who has just started beginner classes on a Friday (1-2pm) at the Millennium Hall in Lacey Green tells us more.

Plagued by childhood asthma and rickets, Joseph Pilates created an exercise method which sprang from his determination to strengthen his frail, sickly body. He studied amongst other things yoga, martial arts and Zen meditation. During the latter part of the First World War, Joseph served as an orderly in a hospital on the Isle of Man, where he began to help rehabilitate wounded soldiers. He attached springs to hospital beds

to support the patient's limbs while he worked them and he and the doctors noticed that the patients recovered more rapidly. His experiences led to the development of his distinctive method which he brought to New York in 1923 and where he ran his Pilates studio right up until his death in 1967, aged 83.

Fast forward to 2023 and Pilates has evolved over time with various adaptations which takes Pilates' original 34 exercises (often referred to as classical Pilates) and makes them more user-friendly for everyone to do.

Pilates uses strength, resistance and mobility exercises to alleviate joint pain and stiffness, aid flexibility, increase energy levels, improve posture and muscle strength.



To find out how Pilates can benefit you, contact Sarah at nextchapterpilates@outlook.com or visit nextchapterpilates.com.

LG & LR Village Hall

A year ago or is it two, we were able to replace the shingle covering the car park with a solid smooth surface which has benefited the disabled, the elderly and very young children, aside from removing a lot of maintenance. We financed this through the government grants for loss of income during Covid, the saving from utility bills and donations from local people and the Parish Council. We haven't used lines to indicate parking spaces and this appears to be working well - people have been very reasonable without having to squeeze out of their doors and the larger groups marshall their parking.

We reluctantly had to remove virtually all our greenery including the tree because its roots were pushing through the old surface and would do the same to the new. In October we tried to reintroduce some vegetation out the front using planting troughs. These also serve as a barrier to traffic. Bear in mind these are new and will need a year or two to develop. We can also add seasonal plants as and when.

Thanks to Fiona from Fiona Michael's Flowers and her partner who managed to complete the purchasing and planting amidst producing the drama at the Village Hall entitled the Good Life - a very enjoyable sit-com from the 1970's.

We are hoping someone will sponsor a small tree for a small trough in the centre.

The table and seating are recycled plastic (which don't actually look or feel like plastic) for a very long life. These were chosen because there is no requirement to climb over the

seats in order to sit down and by removing one seat, a wheelchair user or maybe two can join in the occasion. Lastly we will be purchasing some sun-shade umbrellas as it can get very hot out on the front - next year hopefully - we don't think we'll need them now for this year.

There is no need to be a village hall user to sit and enjoy but please leave it as you find it, there is a large rubbish container round the side of the hall and of course you use it at your own risk.

The Village Hall Committee



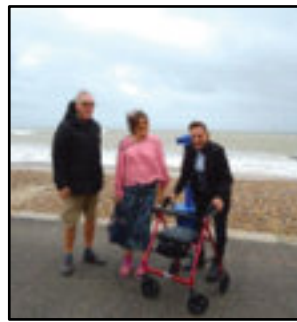
Last month was an exciting time for lots of our clients with various outings. Some went to have a look around Air Command. Others enjoyed a trip to Littlehampton and had a wonderful time exploring the arcades, walking along the beach and enjoying the icecreams and fish and chips which are all part of seaside activities. Others enjoyed local visits to Wades Park. Participating in outdoor bowls has been a wonderful experience for our clients and will hopefully recommence once new arrangements have been organised. We would like to thank the Broadway Bowls Club at Ashley Green for hosting our clients and providing voluntary lessons. Others enjoyed a cup of tea at Chiltern View Nurseries.



Air Command



Littlehampton



Walking on the beach



Being there

Some of our clients entered 'Art in the Park' and one was selected to have their art displayed there. At the Centre it was a hive of activity too. Our 'downstairs' clients completed the 'One Million Metres Challenge', a great achievement, being the equivalent of walking from London to Geneva. Our chairman congratulated them and presented them with their medals.



Chiltern View Nursery



Bowling



Medal awards

There has been a big variety of craftwork with clients producing stained glass effect autumn leaves, hedgehogs, painting, and making baskets, flower bouquets and snakes. There have been numerous cooking sessions with clients making flapjacks, cornflake cakes, apple tarts, fairy cakes and practising making Halloween cookies, which get eaten with their afternoon cup of tea or taken home to eat later.

Meanwhile the trustees continue with the gradual improvement of the centres. This is being concentrated at our Bourne End centre at the minute where an unused room has been converted and decorated for use as a new room for the clients for arts and crafts, quiet discussion and health and beauty sessions. Scaffolding is due to be erected there for the installation of solar panels. In Risborough we are currently getting quotes for the upgrading of the footpath and patio area to the rear and side of the Lower Hall which we hope to accomplish next spring, so it is safe for our clients and enables them to sit outside next summer with privacy provided by the new fence.

If you or your loved one would like a free taster of what we have to offer or would like to consider volunteering at the Princes Centre, please contact our manager Kim on 01844 345105 or Mags at Bourne End 01628 527024

Santiago di Compostella

The Camino di Santiago (in English: The Way of Saint James) is a network of pilgrimage routes leading to the shrine of the Apostle James in the Cathedral Church of Santiago di Compostela in north-west Spain where tradition holds that the remains of the Apostle are buried. A painting by Rembrandt in 1661 depicts Saint James as a pilgrim with a scallop shell on his shoulder together with a pilgrim's staff and hat nearby. Saint James, brother of Saint John, is the patron saint of Spain.

The Camino was a very significant pilgrimage route in the late Middle Ages and has again become very popular in modern times; being undertaken by Christians of a variety of denominations as well as those of other faiths and by many people who would not identify themselves as people of faith. In a 2010 American Spanish movie, "The Way", Martin Sheen plays the part of Dr. Thomas Avery, a bereaved Father who walks one of the traditional Camino routes in a combination of grief and homage to his deceased son Daniel who had been killed in a storm whilst walking the Camino.

During my time as a parish priest in Leeds, I often spoke with a clergy colleague of walking the Camino together but somehow it never happened and I had supposed that the opportunity had gone. So I am so grateful to have been able to undertake this ancient pilgrimage in September of this year together with Ken Brazier from St. John's Church and Graeme Card, who is the current president of the Princes Risborough Rotary Club. For Ken this was his tenth Santiago pilgrimage and for Graeme his second time.

Also gaining popularity in the present-day is the Saint Augustine Camino from Rochester Cathedral via Canterbury Cathedral to the Kent coast (if travelling in the direction towards continental Europe). After the withdrawal of the Roman Empire from Britain and

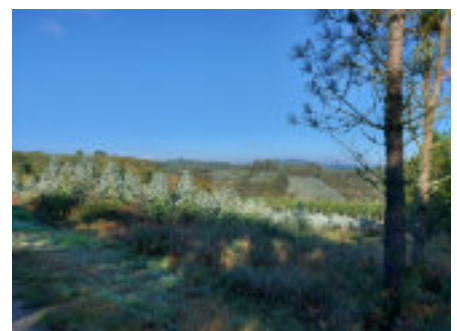
the arrival of the Anglo-Saxons, the Christian faith was largely pushed back to the Celtic territories of the British Isles. In the late sixth century, Pope Gregory the Great sent Saint Augustine to lead a party of missionaries to convert the English to the Christian faith. At around the same time, Saint Aidan led a mission from Iona to convert the people of what is now Northumbria and Yorkshire. In part, this is why our pre-eminent Churches in England are Canterbury Cathedral and York Minster. Augustine and his fellow missionaries arrived on the Kent coast; hence many pilgrims who undertake the Augustine Camino begin at Folkestone and head towards Rochester. But, for myself and my companions, when we undertook the Augustine Camino as a preparation for the Camino di Santiago, we began at Rochester and headed broadly in the direction of Spain.

For the Camino di Santiago itself there are literally dozens and dozens of established routes across Western Europe. The route that Ken, Graeme and myself undertook is known as the Camino Ingles. It begins in the city of A Coruña on the north coast of Spain. The route heads due south to Santiago di Compostela travelling via Sergude, Bruma and Sigueiro through the very beautiful countryside of a territory of Spain known as Galicia. This has ancient Celtic connections; evidenced by the lone piper, seemingly playing at all times of the day, nearby to the Santiago Cathedral!

My first appointment as an incumbent was as Vicar of the Church of the Holy Cross in Borehamwood so it was especially significant for me to arrive in Santiago di Compostela on the eve of Holy Cross Day which is commemorated on 14th September. It was the day following that we attended the Friday evening pilgrims' High Mass when the famed Botafumeiro was in full use;

being an incense burner so large that it needs eight strong people to lift it and together pull the rope by which it is swung! Next morning for us, then, a very early start to catch the flight home with some terrific memories.

Tony Bundock





NATALIE JANE DANCE SCHOOL

Welcoming children aged 2-18 to a well established dance school.

CLASSES AVAILABLE IN DOWNLEY, CHINNOR, LACEY GREEN AND MONKS RISBOROUGH

www.njdance.co.uk 07855 296242



TUTORS

Experienced, qualified tutors offer coaching for:

11+ transfer test (assessment test also available)

All Key Stage levels, GCSE or AS/A level in English, Maths, French, German, Sciences.

English as a foreign language (EFL)

Telephone 01844 347471 or 07884350939



WESTMEAD

Plumbing & Heating Ltd

Proprietor; Derek O'Shaughnessy
Jacaranda, Main Road, Lacey Green.

Qualified Local Tradesman, with over 30 years experience. Offering a comprehensive plumbing and heating service.

For **RELIABLE** and friendly service,

Phone ; 01844 275908

Mobile; 07785 326966

Email; westmeadplumbing@talktalk.net

All enquiries welcome



Member of the Chartered Institute of Plumbing and Heating Engineers. Gas Safe Registered



BUTCHERS - TIMPSONS -



Order Quality Christmas Meat



www.timpsonssmallholding.co.uk
to see our Christmas Meat Price list and place your order.



Our shop is open

Tuesday - Saturday from 9am until 4pm

Unit 6, Ministry Wharf, Saunderton HP14 3XA

We also offer FREE local delivery!

@ timpsonssmallholding@hotmail.co.uk



Celebrating the Pipe Organ

On Saturday 2nd December at 3pm we are hosting at St. John's Church a recital featuring our restored Samuel Green Pipe Organ. The guest musicians for this recital are Alastair and Gillian Ross.

Alastair Ross was a chorister at Christ Church, and an organ scholar at New College, Oxford, where he gained a First in Music. He has worked as a freelance harpsichordist and organist for thirty-five years. He is principal keyboard player of the Academy of Ancient Music and The Sixteen, with whom he played a Handel Organ Concerto in the 2009 BBC Proms. He also plays with Canzona, with whose director, Theresa Caudle, he teaches every year on courses of

baroque chamber music at Benslow and Jackdaws.

The English soprano, Gillian (Gill) Ross, became involved in the early music world via the Swansea Bach Week which invited all the most prestigious musicians in that field to lecture and perform. School and the Welsh Eisteddfod tradition also instilled into her a great love of singing with the result that she later gave up teaching to follow a professional singing career. Gillian Ross works with major baroque groups in London with whom she has appeared as a soloist on a number of recordings, and her recital repertoire now extends to Romantic Lieder and 20th Century American songs.

Tickets for the recital are £15 (£7.50 for children and young people of school age) and are available from:

Tony Bundock:
tony.bundock49@gmail.com
01844 347741

Gavin and Cher Mole:
gavinmole@icloud.com 01844
342303

Margaret Gray:
migray1979@gmail.com 01844
347094

Saturday 2nd December at 3pm

Gill Ross – soprano

Alastair Ross – Organ

Gilly and I are thrilled to have been asked by Gavin Mole to give this recital, celebrating the restoration of the Samuel Green organ in St John's Church.

When I came to Wycombe in 1972 as Organist and Choirmaster at the Parish Church I soon heard about the Samuel Green organ. But I never got around to visiting it. Until about ten years ago when Gilly, I and a friend were walking in the area and strolled into the church. We were saddened to see the organ looking sorry for itself and wondered whether it would ever be restored.

So, when Gavin told us about the restoration by James Richardson Jones we were overjoyed!

Gilly and I come from 'The Early Music World'. I play – both organ and harpsichord - with The Academy of Ancient Music and The Sixteen, groups whose aim is to perform music as it sounded when it was written. This involves research into styles of playing and particularly the use of original instruments. So I have played old harpsichords in Fenton House, Hampstead, and the Russell Collection in Edinburgh.

From a young age Gilly sang with the Swansea Bach Choir; they were performing with instrumentalists from Holland and Belgium long before musicians in this country had seen the light! Our three-soprano group Concerto delle Donne has performed with old organs in Framlingham, Suffolk, and recorded with a wonderful 1700 organ in Rozay-en-Brie, south east of Paris. And now – a special thrill for us – our cellist son George plays with The Consone Quartet, a group dedicated to performing, on old instruments with strings made of cattle gut, the quartets of 19th century composers from Beethoven to Mendelssohn.

We visited the organ last Friday. A joy to play, reminding me very much of a Handel-style organ in St George's, Hanover Square, made by the organ builders Goetz and Gwynne, on which I have played Messiah for so many years. These instruments are national treasures. Like old paintings and buildings they must be cared for, repaired if necessary, tuned when required, and not allowed to deteriorate.

In our recital we will perform music by Handel, Bach, Purcell and William Byrd, who died 400 years ago. And more up-to-date music – the French composers Fauré and Vierne, around the turn of the 20th century. Organs had become huge by this time – that's a problem on the little Samuel Green! Perhaps we will have thought of other music by the time of our recital.

Do come if you can and enjoy the sound of a musical instrument lovingly restored.

Alastair Ross

JSQ FARM ENTERPRISES

AL-KO
QUALITY FOR LIFE



**WHEN IT COMES TO MOWING LAWNS,
AL-KO MAKE THE CUT.**

Whether you like cutting your lawn or not, AL-KO have the right product for you. With a complete range from hand, electric, cordless and petrol lawnmowers, all the way to the latest robotic technology, all products are engineered in Germany and designed with 'quality for life'.

Lawnmowers from £69
Tractors/Ride-Ons from £1799
Robotic Mowers from £999

Call us on 01494 489806 for your free brochure or BUY ONLINE at www.Jsqfarmenterprises.com



JSQFARM 

Horticultural Society

The Horticultural Society held its Autumn Show on the first Saturday in September. It was an excellent event with many beautiful exhibits. We were fortunate with the weather having had a spell of rainy days which alleviated the scorching heat of early summer and allowed flowers and fruit to flourish. Each year is always an unknown quantity with different problems besetting the gardener and each year something different flourishes and surprises one, which is one of the reasons why we never get bored with our gardens!

In the vegetable section we had a couple of outstanding leeks from Luke Cottis, an excellent set of entries for tomatoes, including novelty cultivars, plum tomatoes and different coloured varieties. This year also gave us more entries in the cucumber class than we often see and indeed, as I write this I still have cucumbers in the greenhouse in October! It has obviously been a good climate for these fruits this year and there are varieties that will do well outside as well as in the greenhouse and they come in all shapes and sizes too.

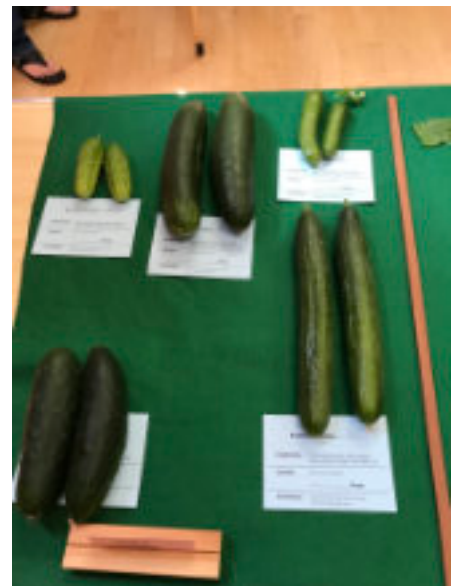
The domestic section was well supported, though the jam and jelly classes were disappointing, possibly reflecting a trend to more healthy eating and less use of sugar to preserve our crops. The floral section was stunning with plenty of beautifully coloured

exhibits. There are pictures here, but more on the village website <https://laceygreen.com/sections/autumnshow23.php>

At the meeting following the show we had an excellent talk from local naturalist John Tyler. As always John showed us amazing photographs, some in extraordinary close up, which depicted what we could expect to see in our locality in the Autumn. These included fungi originating in Australia, flowering and non-flowering plants and insects in abundance. It was a very inspiring talk, though on one of the worst, rainiest nights of the year!

Our next event is a Fish and Chip Supper and Quiz night, to be followed in January with our first talk of the new year on Snowdrops. In March we have local grower extraordinaire, Simon Bolton, who will be telling us all about his Badger's Garden business growing unusual salad crops for some of the top chefs in the country. And if you have eaten any of Simon's produce you will know that a bag of salad is a cornucopia of wonderful flavours, colours and shapes! This is no ordinary food – this is locally grown and exceptional food!

We hope to see you at one of our talks. Visitors are welcome for a small charge and members are free.



Contact any of the committee if you would like any further information.



Alison Shreeve



These Four Walls

Rachael

07956 250031

hello@thesefourwallsinteriors.co.uk

Design Colour Consultation Styling
Decoration Painting

Shaun Guard TV & WIFI SERVICES

- Aerials - supplied, repaired & poor reception solved
- Satellite - Sky Q dish upgrades, discreet dish installation
- Internet - black spots cured, internal & external data cables installed
- TVs - hung on your wall or set up & tuned

 OXFORD AERIALS

www.oxfordaerials.co.uk shaun@oxfordaerials.co.uk

Call Thame 01844 259119



A Hills Electrical

Domestic Electrician

Free Quotes

No call out charge, No job too small

All domestic work undertaken.

Part P registered.

Call Andy 07864 128150

Hillsandy010@gmail.com

SELF-CATERING ACCOMMODATION

WINDMILL FARM, PINK ROAD,
LACEY GREEN, PRINCES RISBOROUGH HP27 0PG
TEL. 01844 343901

Email: windmill_farm@hotmail.com

WEEKENDS AND SPLIT WEEKS AVAILABLE

LINEN PROVIDED - SLEEPS 2-4

S.T.B. 2 STAR

NON SMOKING

Ideal for Touring, Walking, Riding etc.

Stabling available



Fiona Michaels Flowers and Events

bouquet delivery | wedding flowers | funeral tributes | party arrangements |
venue design | party planning | event management | equipment hire
and, of course, fresh, seasonal, bespoke flowers - just because



A Country Florist with a
hint of City Chic

Fiona Michaels, The Studio, Lacey Green, HP27 0QT
www.fionamichaels.com | hello@fionamichaels.com | 07809 624 864

HOME TECHNOLOGY HELP

- MOBILE PHONE, PC/LAPTOP UPGRADE ISSUES
- TRANSFER PICS, CONTACTS, APPS BETWEEN DEVICES
- PRINTER PROBLEMS
- ANTIVIRUS/ OTHER APPLICATION INSTALLATION
- WI-FI/ BLUETOOTH TROUBLESHOOTING
- SMART TV SETUP



CALL DAVE IN LACEY GREEN ON:

07831 775142

NO FIX - NO FEE

Builder / Gardener

20 years of experience in all trades: Carpentry,
Plumbing, Electrics, Decorating, Repairs.
Also garden design and execution, brickwork and
fencing.

*No job too small
Friendly, fast and efficient service*

Contact Alexander 01844 347471
mobile: 073885 51754
iamandiciprian81@gmail.com

plugs

Electrical



Call Tony on 07944 162958
email tony@plugs.me.uk
visit www.plugs.me.uk

Domestic & Commercial
Installation & Maintenance
Inspection, Testing & Fault Finding
Electric Vehicle Charging Points
Garden Lighting & Outbuilding Supplies
Fuse Board Upgrades





Happy Wanderers

Twenty-three members of the Happy Wanderers gathered at The Pines Hotel in Swanage on 1st October for the annual trip away. The Pines is proving a firm favourite of the group, as it caters for all needs and has wonderful views across the bay to Old Harry Rocks and the Isle of Wight. It is also right in the middle of some wonderful walking country at the heart of the Jurassic Coast.

The first afternoon following arrival took us to Swyre Head. This is a fairly straightforward triangular walk that took the group from near the village of Kingston to the highest point east of Dartmoor. On a good day, it affords sweeping views of Kimmeridge Bay, The Needles and the Isle of Portland.

Unfortunately, the mist descended, and the views were lost. Nevertheless, it's a walk worth repeating and some of us will have enjoyed the view on a visit a few years ago.

On Monday morning, we visited Durlston Country Park. Durlston Castle was built some 135 years ago and is now a council-owned visitor centre and nature reserve. Many of the group took in a one and a half mile walk around the cliffs, passing Tilly Whim caves on the way.

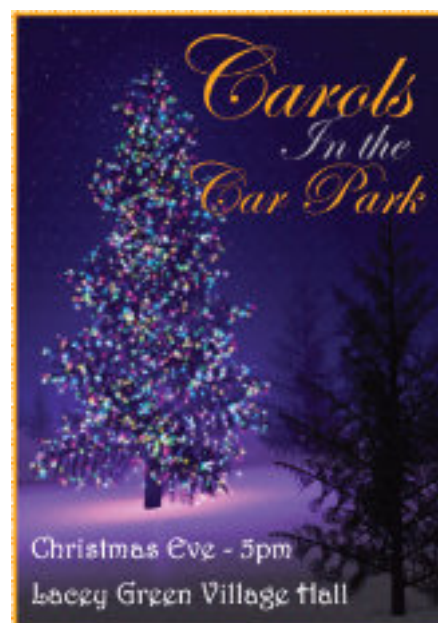
The 'caves' are actually an old Portland Limestone quarry where the building stone was extracted underground on the best seams and delivered by a winch system (whim) to boats beneath the cliffs, from where it was sent all over the world. There is a very good café and exhibition centre in the main building.

The main walk in the afternoon started at the famous Square and Compass pub in Worth Matravers. This took in a walk to St Aldhelm's Head and the 13th century chapel of St Aldhelm which has a fascinating history. From there, we took in part of the South West Coast Path as far as the old Winspit quarry and, from there back to the village for a well-earned pint at the Square and Compass. This part of the coast path is spectacular, if a little challenging in places. We could even see Swyre Head!

We are grateful to The Pines for looking after us so well. They went the extra mile to welcome us with comfortable accommodation, good food and which all added up to make the companionship even more enjoyable.

(photo by Johnny Radford)

David and Helen Cliff



Christmas Carols

Once again, we would like to invite you to join us in the village hall car park at 5pm on Christmas Eve to start the festive season by singing Christmas songs and carols together. Refreshments will be available for a small donation, and we will have a collection in aid of the Lacey Green Windmill fund.

If you have any questions or suggestions do get in touch with us.

Fiona Quilter-Wood & Jane Herve
Village Hall Committee Members
hallmarkadverts@gmail.com

The Black Horse



What an amazing Summer we have had at the Black Horse, hopefully it will continue into the Winter!

We have had a couple of great events over the summer with Nina's Curry Night, which went down a storm, and Sunday roasts are going well. We are fully booked most Sunday lunchtimes. We have a range of different options each week for only £16.95 including a pudding.

It is always a pleasure to have the company of the Over 50's Pub Lunch on the first Tuesday of the month. All are welcome so if you are interested in joining, please see the contact details at the back of the Hallmark. It's a lovely event to be able to meet people from the village and have a chat and a meal.

Dominoes and Crib are still going strong and are having another great season! Well done to them!

If you are interested in getting involved, please don't hesitate to get in touch. We are looking for more teams and if any other pubs are interested in getting involved, please contact Lynne.

We have TNT and Sky Sport in the pub, if you haven't popped in for a drink recently, come and watch a game now the football season is underway!

We are looking forward to a busy Winter with our Christmas Parties! We still have some spaces if you would like to book. You can see the menu online or come in and chat if you have any questions.

The Black Horse is proud to be sponsoring the Lacey Green Sports Club Race Night (see advert on p6) we wish them all the best with this event! We had a great time at the 80's vs 90's disco and can't wait for another superb evening!

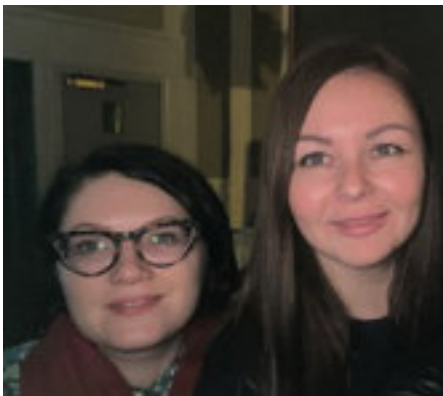
Tickets are on sale at the Black Horse, and you can also name a horse or jockey for only £5 with a chance to win a bottle of prosecco.

We had some sad news, Ian, the former well-loved chef of the Black Horse passed a couple of weeks ago. Ian had been Chef at the Black Horse with Lynne and was a massive part of the team and the community. He lived and worked at the pub for over 20 years after serving as a Chef for the RAF. He will be sorely missed, and we hope Ian is enjoying a nice pint of Guinness in a better place. Our sincere condolences go to Lynne and his family.

We hope to see you soon!

The Black Horse Team

Ukrainians settled!



Now many of our Ukrainian friends are becoming settled in all areas of our community and making plans for exciting futures.

We would like to highlight the career development of Natalia Albokrinova and Natalia Zabrebienav who joined Aston Hearing on a part time basis when they settled in the area.

Both have focused on accounts and finance and now between them carry out all the daily bookkeeping activities for the business, reporting directly to the

finance department, based in Edinburgh. In August they both undertook intensive training to able to use a new online accounting package – Xero.

Both Natalias are busy undertaking extra qualifications in Accounting and English Language. They both are hugely ambitious and are making a fantastic contribution to the business locally and nationally.

Interestingly, they are an important part of a finance team of 8 - 4 of which are based in Edinburgh. 4 of the team of 8 are called Natalia and 3 of the Natalias speak fluent Russian!

Well done Natalias- we are so proud of everything you've achieved so far and look forward to following your careers with interest. A truly wonderful example of triumph out of adversity!

Louisa Spearing

Natalia Zabrebienav "I am pleased to be a part of this lovely team and I prefer to work in the clinic at Thame, conversations with members of the team give me experience and develop my communication skills."

Natalia Albokrinova "September brought some newness not only to the work process, but also to my life. I have started my bookkeeping course AAT level 1 and AAT level 2. Why are you taking 2 courses, you will ask? I don't like wasting time and I would like in time to confirm my qualifications as a manager-economist. I'm excited for a new future I am happy to work within the finance department".

LLS Youth Club

Lacey Green, Loosley Row and Speen Youth Club has enjoyed another wonderful term filled with fun and excitement!

We are still welcoming lots of new members; with the Youth Club being a really popular social event for our local youngsters with over 60 attendees from Year 6- Year 9 every session!

We started the new school year with an amazing Laser Tag event, which was postponed from last term due to the weather. The kids had a great time and the turn out was phenomenal! Thank you to St John's school for allowing us to use their field to host the evening.

Our most recent outing was to Rush trampoline park in High Wycombe, where we took 51



children! They had so much fun bouncing with their friends that I think this will definitely be something that we do again in the future!

We still have a few sessions left this term, both at the village hall and at Roller Mania, at Wycombe leisure centre and we will be ending this term again with a disco featuring 'DJ Chris' on our last session of the year, Friday 15th December.

The youth club is still very grateful to have Harry Patient who is helping us out at the moment, as a volunteer, as part of his Duke of Edinburgh Award. If anyone else would like to volunteer as part of the award, please get in touch.

We meet fortnightly, for just £3 a session, at the Millennium Hall, 7:30pm-9pm. All children Year 6-9, who live in Lacey Green, Loosely Row or Speen are welcome to attend; as well as those who attended St John's School. The dates are also available on the Lacey Green Website.

We will return to youth club after the New Year on Friday 5th January 2024.

As with all volunteer run organisations, we are always looking for helpers and volunteers who would like to join us; or any locals that may have



particular skills or hobbies that they would like to share with our young people. So, if this is you...please do get in touch!

Thank you so much to all the parents who have been helping out so far this term and last term. Without these helpers we would not be able to offer this fabulous club to our youngsters.

If you would like more information about the LLS Youth Club, please visit the Lacey Green website www.laceygreen.com or email directly to natashakann@gmail.com

Natasha Kann

Youth Club Leader





STALLWOOD LANDSCAPES & GARDEN MANAGEMENT

FRIENDLY - EFFICIENT - LOCAL

**ALL ASPECTS OF HARD AND SOFT LANDSCAPING UNDERTAKEN
GARDEN RESORATION AND MAINTENANCE**

HEDGE AND TREE CARE

QUALIFIED HORTICULTURIST WITH 25 YEARS EXPERIENCE

HAMPTON COURT RHS SILVER GILT MEDAL WINNER

QUALITY AS STANDARD

FOR A FREE QUOTE AND ADVICE CALL ALEX ON

07725 743857

Speen Pilates

ONES TO ONES ON STUDIO EQUIPMENT



One to one and One to two tuition offers accelerated learning and results, the Reformer uses spring loaded weights to improve your posture, strength and stamina leading to a lengthened, toned body.

GROUP MAT CLASSES (MAX 6)

Classical Pilates aims to enhance your posture, strength and flexibility, body tone, stamina and general fitness whilst releasing unnecessary tension.

All details of group classes listed on the website

Amanda: 07733 307475 www.speenpilates.co.uk

Member of, The society for the Pilates Method, Pilates Foundation, NHSTA, Back Care.

Organisation	Meetings	Contact	Phone	Email address
Happy Wanderers Walking Club	Full walk last Sun of the month 10.30	Liz Lewin	274961	relewin@btinternet.com
Horticultural Society	3rd Wed of Jan, Mar, May, Jul, Sep, Nov. 8 pm	Alison Shreeve		a.shreeve1@btinternet.com
Equus	Theatre, drama, and sometimes food	Fiona Quilter-Wood		artistic@equusproductions.org
Windmill WI (evenings)	1st Wed of month except Jan. 7.45 pm	Daphne Williams	01494 562455	daphne.willash@btinternet.com
High Wycombe and District U3A	4th Wed afternoon of the month	Terry Boreham	01494 928220	hw.u3a.membership@gmail.com
Youth Club	Alternate Fridays - see laceygreen.com web site for details 7.30 pm	Natasha Khan	07737 638718	natashakann@gmail.com
Over 50s Pub Lunch Club	Black Horse. First Tuesday of the month	Yvonne Axe	345216	
Short Mat Bowls Club	Monday 2 pm	Leigh Axe	345216	leigh@laceygreen.com
LG Sports Club Secretary		Stephanie Dell	07768 831196	steph.dell@btinternet.com
LG Sports Club - Tennis		Nigel Glenister	342771	ne.glenister@btinternet.com
Yoga	Tuesday: Gentle Yoga at 9.30am Chair Yoga at 11am	Claire Page	07711 588214	hello@clairepageyoga.com
Pilates	Wednesday mornings	Rosie Lewin	07932 607116	bodyconnection@talktalk.net
Karate	Monday evenings	Stephen Fincham	07540 531034	stevefincham@sky.com
Whiteleaf Bowmen	Wed, Thu and Fri evenings, Apr to Sep	Jan O'Keefe	01628 528978	www.whiteleafbowmen.org.uk
Bucks Council		Carl Etholen	07810 442617	cetholenn@buckinghamshire.gov.uk
St John's Church		Tony Bundock		Tony.bundock49@gmail.com
Scouts (Naphill and Hughenden)		Peter Byerley	01494 565955	
Parish Council		Frank Post		clerk@laceygreen-pc.org.uk
LG Windmill	Sundays and Bank holidays 2 to 5 pm April to September.	Jane Herve		contact@laceygreenwindmill.org.uk
Millennium Hall		Clive Hodgton	07751 541222	clive@laceygreen.com
Millennium Hall bookings		Karen Hodgton	07922 184 886	karenhodgton@hotmail.co.uk
The Black Horse		Sam Watson	345195	sam.watson105@gmail.com
TASWW	Third Wednesday morning	Gail Wight	07885 232171	gailwhite1604@gmail.com

Hallmark is published quarterly by the Lacey Green and Loosley Row Millennium Hall Management Committee, although opinions expressed in comment or contribution do not necessarily represent the collective view of that committee.

Our aim is to mirror the mark that the Village Hall makes upon our community, to publish the activities of all Village organisations, and to provide a forum so that the rights, the wrongs, the well-being of village life can be aired.

We welcome news from all the Village clubs, societies, church and school, stories of local interest and entries for the Village Diary. A version of this printed Hallmark may be found on our website www.laceygreen.com, which also has breaking news and many additional articles and photos.

HALLMARK EDITOR

Mike Piercy, Malmsmead, Kiln Lane, Lacey Green, HP27 0PU
01844 344021 mike.piercy@gmail.com

ADVERTISING MANAGER

Fiona Quilter-Wood. Barn Cottage, Idle Corner, Main Road
[email hallmarkadverts@gmail.com](mailto:hallmarkadverts@gmail.com) 07809 624 864

VILLAGE HALL BOOKINGS

Karen on 07922 184 886

VILLAGE HALL MANAGEMENT COMMITTEE

Clive Hodgton (Chair)

Jane Hervé (Secretary)

Leigh Axe (Treasurer)

Karen Hodgton (Booking Sec.)

Yvonne Axe, Vivien Sheehan,

Gill Mortimer-Biggs, Cathryn Davies,

Fiona Quilter-Wood

COFFEE MORNINGS

Held in Village Hall 10am - 12 noon Thursdays. Friendly chatting with tea or coffee and biscuit.

OVER-50s PUB LUNCH

Come to the monthly lunch on the first Tuesday of the month at the Black Horse. Even if you know nobody you will be welcome and can meet your neighbours. Contact Leigh on 345216

POST OFFICE

Village Hall: Monday & Thursday 9 - 12

If someone collapses suffering severe chest pains, remember there is a Defibrillator at the kitchen entrance to the Village Hall, beside the bins.



LACEY GREEN WINDMILL

The windmill will be closed until April 2024.

For more details see www.laceygreenwindmill.org.uk email: contact@laceygreenwindmill.org.uk

Printed by Hartgraph Ltd 01628 810 523

**CLOSING DATE FOR COPY FOR THE FEBRUARY EDITION
January 25th 2024**

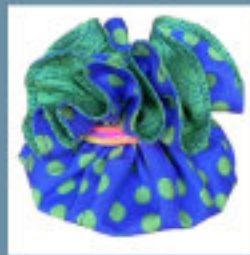
for all design devotees who care about how
and where things are made



18 & 19 November
Bledlow Ridge Village Hall,
Chinnor Road. HP14 4AJ

10am
to
4pm

11 Nov, 2 & 16 Dec
Thame Town Hall, High Street, OX9 3DP



 @sallyevansartistsmakersfair

 @sallyartistsmakers

ACCOUNTANTS FOR SMALL BUSINESS

At TaxAssist Accountants we specialise in supporting small businesses. We can help with:

- Self Assessment Tax Returns
 - Business Accounts
 - Corporation Tax
 - Bookkeeping and VAT
 - Business Start-ups
 - Company Formations
 - Payroll and HR
 - Help with Finance Raising
-and much more.

 **TaxAssist Accountants**
The Accountancy and Tax Service for Small Business

01296 752014

www.taxassist.co.uk/aylesbury



DISCOVER LACEY GREEN HISTORY WIKI

*Connecting the People, Places and
Social History of Lacey Green's past*

FREE TO USE



WEBSITE
www.LaceyGreenHistory.com




CREATED BY
JOAN WEST



Follow on Facebook
Lacey Green History Wiki

including the work of many local history researchers



Intrigued by the past around us?
Explore Lacey Green,
Loosley Row, Speen,
Local Parishes
and Hamlets

Welcome to "Lacey Green History Wiki", it is a place to explore Lacey Green of the past: the people, the places and the events that shaped our history.

My name is Joan West and local history research is my passion. For over 50 years I have enjoyed investigating local history and putting it together like a jigsaw. It is an ever-evolving picture.... And growing media wiki! Rather than keep it all to myself I wanted to share with others, who I hope will be as curious and intrigued as I have been.

In this wiki, local people, places and events are recorded and linked so that it is possible to trace back through their stories.

For me it all began in 1971 when I hoped to discover the history of Stocken Farm, my husband's family home. Dennis Claydon was already working on the local history here. Dennis and I spent many hours in the Local Records Office, sharing our discoveries. In 1970 the village magazine Hallmark was launched providing more general information and in particular research by Miles Marshall and Rita Probert.

In 2008 the Local History Group was formed when Dennis Claydon and I declined to write a local book knowing that once printed it could not include any new information that came to light. It was decided to put that information on a website.

In this wiki I am putting information from all these sources so that all those people, places and events can be linked to tell their stories, with as many photographs as possible.

So, now you are here, to get started scroll down the indexes below and click on a page. Organised by:

- Properties
- People
- "Social Snapshots" in Decades
- Roads or Locations
- Amenities
- Organisations

Once you are on a page, people, places and events tell their own story, and are linked together where possible

Please have fun and explore! www.LaceyGreenHistory.com

Follow us on Facebook: "Lacey Green History Wiki"

Do you have information to add to the wiki? Please email LaceyGreenHistoryWiki@gmail.com

