

HALLMARK

THE LACEY GREEN & LOOSLEY ROW MAGAZINE



**"Lest we forget"
by Ted Rogers**

MAY 2006

NUMBER 198

ESTABLISHED 1970

HALLMARK

THE LACEY GREEN & LOOSLEY ROW MAGAZINE

SUMMER 2006

Hallmark is published quarterly by the Lacey Green & Loosley Row Millennium Hall Management Committee, although opinions expressed in comment or contribution do not necessarily represent the collective view of that committee.

Our aim is to mirror the mark that the Village Hall makes upon our community, to publish the activities of all Village organisations, and to provide a forum so that the rights, the wrongs, the well-being of village life can be aired.

News from all the Village clubs, societies, churches and school, stories of local interest and entries for the Village Diary are always welcome. In addition, any suggestions for improving Hallmark.

VILLAGE HALL EXECUTIVE COMMITTEE

Clive Hodgton (Chair), Lee Harte (Treasurer), Rachel Panter (Vice-Chair),
Jo Tope (Secretary), Karen Hodgton, Betty Tyler, Norman Tyler

VILLAGE HALL BOOKINGS

☎ CLIVE OR KAREN on 01844 274254 (Answering service)

EDITOR

✉ Norman Tyler, 5 Woodfield, Lacey Green, Bucks HP27 OQQ (2/3rds down Woodfield, on the left)
☎ 01844 344606 (with answering service & fax)
Email norman@tyler333.fsnet.co.uk

ADVERTISING MANAGER

✉ Chris Baker, "Woodpeckers", Kiln Lane, Lacey Green, Bucks HP27 OPT (past the pond on the left)
☎ 01844 275442

**The Autumn Hallmark will be published in August
– closing date for copy is July 17th**

Chairman's Report

Summer 2006



Summer days are hopefully heading our way. Although as I write this it's still rather a wet and still quite chilly time! Let's hope only sunshine will follow and we can all look forward to that.

I would like to thank the few who attended the Village Hall AGM in March. I assume by the lack of attendance that you are all very happy with the way we are running

the association. It was nice to see Tony Smart and his positive comments were much appreciated.

The day to day running of the hall continues to thrive thanks to the continuing efforts of all the team. Bookings are now exceeding availability and a waiting list for prime time slots is in place. Tuesday nights are now taken for Jazzercise classes so come along and get fit for summer.

The library is still available and very well stocked with

all sorts of books. It is accessible from the Post Office area on Mondays and Thursdays. The WI continues to offer a coffee morning on Thursdays from 10am to noon and would welcome any villagers to join them. I know we harp on about offering support to these services but this really is the only way that we will be able to keep them!

Hopefully our new village website www.laceygreen.com should be up and running very soon. It will give full details of the hall, together with a timetable, how to book, maps and even a what's on guide. We will also

be including local based information for other areas of the villages, so if you're a member of a village based club, association or business and you have a site, we would be glad to have a reciprocal link with you. Call me on 01844 343113 for details.

Have a great summer - sit back, relax and enjoy. Keep an eye out for the posters advertising all the up and coming events. I know they all need your support too!

Clive Hodgton, Chairman, Village Hall

From the Editor



Our last edition's article by Con Baker on her childhood village memories, proved so popular that we have more for you this time. The earliest possible

compliment came from our printer himself, who read it while he was actually printing Hallmark! Others soon followed.

I'd like to thank everyone who sent me messages and "Get well" cards recently, relating to my collapsed vertebra and lymphoma. I am now improving in most ways, many thanks to recent advances in chemotherapy. I don't yet know the eventual outcome, so it seems opportune to ask if anyone in our community would like to get involved in helping with editing Hallmark. Gaining some experience with me in that direction would ideally be taken on by someone who could take over from me in due course. The editing work takes a total of 2 weeks every 3 months, so totalling 8 weeks per annum. During those periods, there is still time to keep your diary activities, particularly if you act on incoming articles when they arrive before copy date. Editing Hallmark keeps you up front with local people and activities and is a very interesting and rewarding part of my life. You do receive enough feedback, directly and indirectly, to know your efforts are appreciated. The main requirements technically would be knowledge of and access to a computer with Microsoft Word (in which I receive many articles), being on E-mail (a very efficient way to receive and send articles - you also know whether it arrived OK), and a reasonably good quality printing machine (or know someone who has one).

If you're interested enough for us to have an exploratory chat, my contact details are halfway down page 1.

I have to say I'm disappointed in the small number of photos I've received for this issue. I know we all enjoy seeing them and they add to the interest in reading the associated articles. Apart from more modern digital photos you can put on disk or USB or in an E-mail, I can easily use a photo print from any old camera, as long as it's of reasonable quality. I can easily crop off excess sky etc. If you have any photos that you think could interest our readers, please let me have them, preferably with some kind of information I could use for a caption or associated article. If you have several photos, lend me them all so I can choose. No photos received = no photos in Hallmark. Whatever you send me, I'll return to you after Hallmark has been printed.

I'd love to receive anything from under-20s about your interests. Thank you in advance for anything you do or get someone else to do!

**VOLUNTARY DONATIONS TO
HALLMARK
are being collected with this edition.**

**As a guide, printing and associated
costs total about £5 per annum for
each household**

Norman Tyler, Editor

Our Cover Story

70th ANNIVERSARY OF FIRST FLIGHT OF SPITFIRE

Background information by this issue's cover artist, TED ROGERS of Westlands Rd

The first flight was mid-afternoon on March 5th 1936 at the Supermarine Works at Eastleigh, Southampton, by Captain Joseph "Mutt" Summers in the unnamed plane no K5054. It was named *Spitfire* in April.

It was designed by Reginald J Mitchell (who didn't live to see it actually used as a fighter plane) and a small design team. Powered by one 27 litre Rolls Royce PV12 engine, later named *Merlin*, it developed 625hp for take off and 790hp at 12,000 feet. Target for the new engine was 1,000hp.

STOP PRESS

Maurice "Mosh" Saunders, a key member of this outstanding and interesting local family, died in the early hours of April 21st. His funeral was on Thursday 4th May 11am at St John's Church and 12 noon at Amersham Crematorium.

Too late for an appropriate article to be included in this issue, one will appear in the Autumn (August) edition.

On the Farm

The reform of the Common Agricultural Policy of the European Union is making farming management change. Not wanting to end up like the Tolpuddle Martyrs in Australia, we're going to have to try to go along with it. The objectives are a dilemma. They are

- better environmental care
- halting the decline of smaller farms
- International competitiveness.

The EU is a member of the World Trade Organisation so will move into line with world prices. To be competitive, costs must be paired right down and expansion is the only way to cover them further. But farms can only get bigger at the expense of losing small farms. They alone can invest in new technologies and new management knowledge and small farms are unlikely to have any spare to invest in conservation.

All attempts to achieve the three criteria laid down would appear counter-productive. Only time will tell, for that is what we have all got to aim for. We have known this was on the cards for a while now. So can any changes be seen locally?

Certainly more dairy farms have sold or are selling up. These are not small farms; they had already gone, but substantial herds. The news has reverberated round the grapevine like an electric shock. Even close friends were not aware. Farmers might talk about the weather – it's important in all they do – but unlike popular belief very rarely complain. Perhaps it is because the

weather plays them up so much that another adversity is just one more and not worth mentioning. It is very easy when you are working every hour that was made to soldier on until it is too late, and the rug is pulled from under your feet.

"Diversify" is the buzz word. B & B holiday lets, offices in barns. That is what is coming for many. The farm propped up by these while farmers continue doing what they were trained for - producing food and maintaining the countryside for everyone to enjoy, not realising what is keeping them afloat.

Briefly to put our farm in the picture: Four family partners, 1200 acres, 280 milking cows, grass, arable and maize, 700 ft up on the Chilterns, Area of Outstanding Natural Beauty. Flat land on the top and steep valley sides. The soil is thin, the fields not large, some small. It is not easy to farm. It is very beautiful.

Why don't we sell and move to somewhere easier? This is where our roots are. The fields we have sown – the cows we have bred – the trees we have planted, the old farmhouse, the corn when it waves in the sun, it is all part of us.

So are we typical farmers? Well, we hope we are aware of the difficulties, and so we shall do our best to achieve the new goals and as long as we can keep above the deluge of paper thrown at us, we shall farm. Yes I guess we're typical – of those that are left.

Joan West

More Reminiscences of her Girlhood in the 1920s

by Con Baker

- THE OLDEST PERSON IN OUR VILLAGE

as recorded on audio cassette in 2000, when Con was 92
for Dennis Claydon, our local historian and Parish Councillor



AN ACCOUNT OF THE RAND WEDDING

Mr and Mrs Rand and George. No date - I cannot remember. But I think it was before Fred and I were married. Mrs Boorman, Eric and Jess, Fred and I

had an invite to the wedding of George, their son, and Rosemary. The Rands, by this time, had moved from Grymsdyke to Ashendon, a village about 20 miles away, the other side of Aylesbury, so we five accepted.

My Dad, at that time, had an old Citroen car with running boards and box battery on the side. We had a handle to start the car with. It was a job to start sometimes. He even had to get a kettle of boiling water to warm the engine up. But this day it must have started well, as off we went. Mrs Boorman had packed us a picnic, as we were going such a long way. I remember Mrs Boorman had made such a lovely sausage and hard-boiled egg pie. It was lovely. I can't remember anything else we had. I think we had this picnic, maybe, the other side of Chinnor - I can't remember. Then off we went on our long journey.

We found the farm at Ashendon but wrong farm! So went on to the church where the service was to be held. It was on the top of a hill, I remember. The car seemed to go OK. Went into church after parking the car. Very very old church - walls just white-washed, if I remember rightly. Lady playing the little old pedal organ. She had a funny little hat on, glasses on the end of her nose. That was the start of our laughs, of which we had so many that day. She played "Tell me the old old story". Then we sat down. George and his family came in, and then the bride. I think the service had to start without the coach from London. As Rosemary worked in Buckingham Palace and I think about 20 people were coming and they had got lost. I could understand that, anyway. They came in - tiptoed in, as they were late, and there was a step up to the pews and everyone crept in. And "bang" when they got to the step, as it was a bit dark in the church. Creep creep, bang, bang. We

four exploding with laughter as we could not laugh out loud. Jess and I were shaking with laughter. Well, after the service, we went back to the lovely old farmhouse. We sat at our table and had the most beautiful home-cured ham. That is all that I remember - that ham. Guess, there was a cake and wine - I don't remember.

Then the speeches. Well, that was something. George's aunt got up and said how lucky the bride was to have such a good chap as George. Oh, dear, before she could sit down, Rosemary's aunt stood up. "I don't know about that", the aunt said. "I think George is very lucky to have a girl like Rosemary". We really thought they were going to have a fight. More laughter on our part.

Then we all went to a big room upstairs where a gramophone was playing and Fred and I had a dance or two. Had to wind up the gramophone all the time. Then Mrs Boorman said to an elderly man and a young girl "is that your dad?". "Oh, dear, no" the girl said - "my boy-friend!". So more laughs amongst us four - and Mrs Boorman, I guess.

Then time to go on our long journey home. It had rained a little, I think, as the wheels of our cars started spinning. Poor Mr Rand, in his lovely new suit, gave us a push and the mud splashed all over him. The last we saw of Mr Rand was scraping the mud off his suit. "Drive on" shouted Eric. "Don't stop". So that was the last we saw of the wedding. What a day! We had so many laughs that only we knew about. I do wish we had recorded this when Eric was here, as he could tell this story so much better than me. He was going to write it all down but, of course, never did, so I've done my best to remember. The Rands, the wedding day, the journey, the church and poor Mr Rand's suit. I don't think I'll ever forget that wedding. How we laughed - of course, the family did not know about all this laughter.

We went down to Ashendon once more. Poor Mr Rand had died by then, I think. I wonder if the farm is still there and the church on the top of the hill. It is all a long time ago and I wish Eric could have told you this story of the wedding. So hope you can have a laugh, as we did, with my account of the wedding. They were such nice people, the Rand family, the day we had at the wedding.



Some people give
happiness wherever they
go

Others bring happiness
whenever they go

Happy Wanderers Walking Club

SUNDAY 29 JANUARY 2006

Twenty five Happy Wanderers met on this crisp Sunday morning at Hurley to enjoy a walk along the Thames Path and back.

Having failed to reconnoitre the route beforehand, we were soon confronted by the footpath being closed and had to retrace our steps and find the diversion. This detour took us past a small enclosure where two llamas were grazing. The other wildlife we saw was on the

river, being mainly Canada geese with few Mallard ducks.

The only boating we saw all morning was a few canoeing enthusiasts. Both Danesfield House Hotel and Medmenham Abbey stood out sharply in the bright sunshine on the opposite bank.

Having completed our walk, about 5 miles, half the group retired to the Red Lion pub for Sunday lunch.



AGM, PICNIC & WALK SUNDAY 26 FEBRUARY 2006

Thirty five members of the walking club turned up for the AGM held in the Millennium Hall. As usual, a good turnout - this represented two-thirds of this year's membership.

The Chair was taken by Roger Brudenell. A new Vice-Chairman was welcomed - Ronnie Lewin. Treasurer Ron Goodearl. We use the opportunity to make the AGM a social gathering, inviting members to bring a picnic lunch with them, and afterwards to join a short local walk.

Twenty five enjoyed the exercise and fresh air. Thanks to David and Wendy Morgan for leading the walk.

WALK SUNDAY 26 MARCH

Twenty Happy Wanderers met at Hambledon for the 10.30am start on a bright spring-like morning. Always an interesting area to walk, which today Liz Southon and Sue Phillips led us through - a spectacular variety of countryside with hills, woodlands and farmlands.

Making our way back along the valley, we arrived in the picturesque village of Hambledon, where some of us were lucky enough to get into the *Stag and Huntsman* for lunch on a busy Mother's Day Sunday.

Ron Goodearl

“Wildlife on the Move” Trains Days

RUN BY CHINNOR & PRINCES RISBOROUGH RAILWAY



On Saturdays 1st and 22nd April, the Chinnor & Princes Risborough Railway ran these successful trains, when volunteers from the Chiltern Conservation Board joined passengers on the trains. They were available to answer questions about wildlife and habitat on the seven mile round trip from Chinnor station.

Further details are on page 19 of Hallmark’s February 2006 edition.

Above is a photo of families enjoying looking through the train windows

Sunday 23rd April was St George's Day and the Chinnor and Princes Risborough Railway celebrated with the assistance of Traditional Morris Men groups, who demonstrated their unique skills from 12 noon onward throughout the afternoon. A beer tent was

selling locally produced Real Ales from the Chiltern Brewery and a special bottled beer was on sale. Trains departed Chinnor station at 10.00 and 11.15am, 12.30, 1.45, 3.15 and 4.30pm.

Loosley Row Baptist Chapel

As you are all probably aware, the chapel at Loosley Row has been closed, due to falling numbers, for a number of years. The Trustees wanted the building to be kept and its integrity maintained, and after 3 years of discussion with Wycombe District Council, plans were passed for its conversion to a house. The conversion is now under way by a local developer and builder.

Members of the chapel have been contacted to nominate charities and organisations to donate the proceeds of the sale to. The Trustees are pleased to note that the following will benefit from this:

Cancer Research St. John’s Church
Great Ormond Street Hospital Speen Baptist Chapel

St. John’s C of E School
Princes Risborough Chapel
Lacey Green Village Hall
British Heart Foundation
Lacey Green Sports Club

Helen House
Florence House
RNL
Air Ambulance
Lacey Green Windmill

The cemetery at Loosley Row is still maintained by the Trustees, and enough funds have been held to ensure that its upkeep is covered.

The Trustees would like to thank all those involved in supporting Loosley Row Baptist Chapel throughout its lifetime, and wish its new and future owners much happiness.

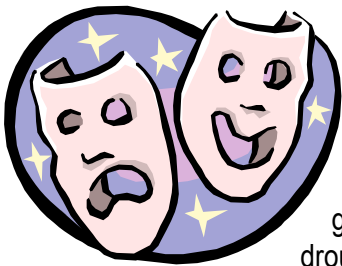
TONY CATER

More Alternative Definitions



Capsize	Usually about 71/4
Acolyte	Easy-listening clarinet music
Nonchalant	Arrive at Butlins without prior booking
Ranker	Japanese term of abuse
Organism	An irrational prejudice against Wurlitzers
Cannibalistic	A Geordie missile
Bigamist	A larger than usual fog
Weight machine	A Virgin train
Weightwatcher	Virgin passenger
Sea legs	The eggs of the seal
Cabbage	Opinions of taxi drivers
Mayfly	A Virgin plane
Retard	Very difficult in Yorkshire
Aspire	Pointed bit on a church
Cyclone	An identical bike
Childhood	Very young gangster
Deliberate	To imprison
Orchid	SonofaBrummy
Livery	Rather like liver
Coincidental	Having matching teeth
Donation	Where Homer Simpson is king
Damnation	Holland
Lamination	New Zealand
Extort	Having left school
Teutonic	What you order with two gins
Wristwatch	All night vigil in a very strict monastery
Coffee	Someone who is coughed upon
Ivy	Roman for four
Cloister	A pretentious clam
Hamas	What Geordies use to bang nails in
Megawatt	Pardon!!!!!!.
Liability	Political skill
Cashew	Nut that makes you sneeze
Pistachio	Nut that makes you drunk
Facial hair	you may find on top lip of alcoholic i
Marmalade	The cry of a new-born hick
Pancreas	A gland located next to Kings Cross
Concurrent	An object what looks like a raisin, but isn't
Propaganda	A good looking wooden leg for a male goose
Tinker	An Irish philosopher
Platypus	Give your cat pigtails
Abacus	Swedish swear word
Tactics	Little minty sweets

Lacey Green Productions



Just when you thought that only gardens suffered from drought, I can tell you that amateur drama groups do also. No drought of plays – just a drought of enough people to present a full-scale dinner theatre in our usual end of May slot this summer. Our apologies to our audience – we shall be back at the end of November, refreshed, reinvigorated and raring to go for our pre-Christmas plays and dinner theatre.

In the meantime, we are seeing what other drama groups are presenting to their audiences. LGP parties have recently been seen in Maidenhead, Thame, Cookham and Stratford. Maybe I should make it clear that the last of these groups was not an amateur one! If

you want to see a marvellous, ex-Stratford production of Arthur Miller's "The Crucible", book up to see the RSC now while they are in London at the Geilgud Theatre.

Our plans for the last part of 2006 include not only a dinner theatre but also a further production for our *Theatre at Home* at Chipko, Parslows Hillock. Our resident playwright, Mari Wallace née Cheesman, is writing us a *Murder Mystery* [but without a murder! Intrigued?] We even have the germ of an idea for our pre Christmas 2007 production.

Play readings and auditions for both of these LGP events will be taking place shortly. If you are interested in joining, as actors, stage crew, ticket sellers or anything really, call us now on 01844 344207.

Peter Brookhouse

Bucks Free Press Could Publicise Your Events

MESSAGE OF INVITATION FROM THEIR LOCAL CORRESPONDENT

My name is Janet Idle and I have been placing items of interest and dates and times in the Community News section of the Bucks Free Press for Loosley Row and Lacey Green for several years. Now our local villages this side of High Wycombe come together under the District News heading. I have now been given a bit more space for local items. It has been super to hear from the various organisations in Lacey Green and Loosley Row, and I hope that widening the circulation for events, especially when fund-raising has been at stake, has been helpful. I have family in Loosley Row and know the area and its organisations and societies quite well.

I appreciate that not all societies wish to advertise their meetings to the wider public every time but there are open meetings, fund-raising activities, events and special occasions when it is suitable to spread the

news profitably, either for financial reasons or community spirit. Please send me your news where it is relevant, for example diamond or golden weddings, charity functions, musical events, meetings, village needs like Post Office and shops, and I will give you a useful write-up, and the same with general problems. Sometimes items are put into a different section, for example sport, but that is an editorial decision. I am interested in the area this side of Wycombe and I think I try to keep it on the map in a positive way. My thanks to those who have contacted me. For your news or information contact me on 01494 563673 or email at angusjanet@yahoo.co.uk by Monday noon deadline for Friday editions.

Janet Idle

Loosley Row & Lacey Green Horticultural Society

GARDEN VISIT and PUMPKINS

We held the A G M on 15th March, and served a very nice, cider based fruit punch on arrival, appropriate as the talk following the formal meeting was entitled "Covent Garden". The A G M business was swiftly disposed off. Membership is down somewhat, which is a concern that the Committee is trying to address. Finances are very healthy. As to the Committee, with one exception, the usual suspects were given another 12 months. One or two may be seeking early release in the next year or so, and we really do need a couple of new members.

Colin Hobdell has left the Committee as he is moving away. We shall miss Colin's knowledge and cheerful enthusiasm, and we thank him for all the work that he has done for the Society and wish him and Barbara happiness in their new home.

Our next Meeting is on Wednesday 24th May, in the Village Hall. A talk on vegetable growing, including potager gardening, from which we shall get some useful tips for the Annual Show on 2nd September, Schedules enclosed in this Magazine. We are presenting a new Trophy to the entrant accumulating the highest number of points overall, who has not previously won a Trophy. We hope that this will encourage newcomers.

This year there will be a Class for the under 16 year olds in the Vegetable and the Domestic Sections, and a special Class for a rich fruit cake, to celebrate the Society's 25th Anniversary. All of these Classes are open to both members of the Society and to non-members living in Loosley Row or Lacey Green.

At the Show we hope to display some of the entries in the competition that we stage each year for children at St. John's School. The standard is always very high.

We are visiting Mary Berry's garden at Penn on Tuesday 18th July, at 2.30pm. The cost is £4.50, which includes admission, tea and cakes. Own transport, but please let me know at least a week before because we have to go as a group. If you are not currently a member, you would be welcome, but we hope that you would join the Society, annual membership fee £2.

The following evening Michael Hardy will be giving a talk on Ely Cathedral to our July meeting in the Village Hall, and we look forward to seeing his superb photographs.

We are having an informal and light-hearted Pumpkin growing competition. Collect your seedlings at the 24th

May meeting, and bring the results along to our November meeting for judging. We shall be serving Pumpkin soup at that Meeting.

As ever, new members are welcome at our alternate monthly meetings in the Village Hall at 8pm usually on the third Wednesday, except May, which is on Wednesday, the twenty-fourth.

Terry Fendom, Chairman
01844 342636

Saving the Planet for Future Generations

- HOW INTERESTED ARE YOU?

If you are, you could well visit *The Environment Centre* on Holywood Mead in central High Wycombe. It's well situated, surrounded by the Rye, Keep Hill Wood, the river Wye, Bassetsbury Manor, Pann Mill and Funges Meadow Nature Reserve.

It is staffed by 25 volunteers (more most welcome), 7 trustees and, admirably, only one part time paid official. Cllr Liaquat Ali, High Wycombe's Mayor, was so impressed with its good work that he was very pleased he had taken the Centre as his charity for his mayoral year.

You could go on your own or with your family or friends, possibly timing it to suit some event in their programme, almost all of them free.

Cutting the Carbon was a recent past exhibition which included information on hybrid cars and how to buy one, car share schemes, safer routes to schools, travel-to-work schemes, cycle pools, alternative forms of transport and transport plans by Bucks and Wycombe Councils. On display outside was the revolutionary design Toyota Prius car using a combination of petrol power and an emissions-free electric engine.

Details of future events can be obtained by 'phoning the Centre on **01494 511585**, possibly getting on the mailing list for their *Ecobuzz* newsletter, E-mailing manager@ecobuzz.org.uk or looking up their website at www.ecobuzz.org.uk.

Internet Land Sales

This issue remains a serious threat to the countryside. Some progress since the last Hallmark has been made with the District Council with agreement in principle being given by Wycombe to the positioning of warning notices at each site pointing out that any planning application would be subject to Green Belt and AONB policy. The final go-ahead for the erection of these is dependant on agreement to the wording to be used. If you do see a new site or have any information that could help in any way to prevent the practice then please let me know.

A4010 Woodway / Culverton Junction

The latest situation on this junction improvement is that a decision to go ahead is expected shortly from the County Council. I have been told that Val Letheran as the Portfolio Holder for Transport will make non-key decision shortly and that work should then start this year. I am not sure of the exact date yet so will keep you informed when I do.

The Speed Limit Review / Tranquil

The good news is that real progress is being made with the installation of the posts to carry the new limit signs. This means that the new limits should be in force shortly. I have asked that the Speed Indicator Signs be made available so that these new limits can be reinforced so that speeds are reduced. I am also told that the traffic police will be taking enforcement action at an early stage so please make sure you know where the new limits are and that you do not get an unwanted ticket.

Progress with Tranquil Project is also being made with the Parishes agreeing to the village entry treatments. I believe for Lacey green and Loosley Row white gates have been agreed for the start of the new limits (Woodway and New Road) and that these will be in place shortly. This is not the end of the project and work on the second phase that includes consideration of the Quiet Lanes and traffic calming measures in areas where parish requests have been made.

The Village Design Statement

This statement that now can be considered as having the weight of Supplementary Planning Guidance, has already been used to support arguments against various proposals being made to develop land in the Parish. In Kiln Lane the proposal to remake part of the

lane with a concrete sub-grade contradicts several recommendations. This has been pointed out to the County Council who are now asking for the concrete to be removed and alternatives pursued that are compliant. In Lower Road and Woodway applications for new housing outside the limits of the urban designation have also been resisted as failing to meet with the recommendation that the urban limits remain unaltered. The Methodist Chapel site does have the recommendation that it should be retained for community use. The reason for this is that the possibility of a new post office/ shop together with other community facilities may at some stage be returned to the village. If this land is lost then this possibility would also be lost.

It is important that this statement, developed by the villages for the benefit of the villages, is now supported. It took several years to complete and many residents took part either through direct input or by the consultation process and without support it will be more difficult for the Council to resist changes that contradict those set out by the statement.

Community Leaders Grants

I am told that these grants will again be available from both District and County Council allowances so if you do have a community project that would benefit from £200 to £500 pounds then please let me know. Last year I was pleased to be able to help the Lacey Green and Loosley Row Sports Club and the Lacey Green Singers with grants that added to those for the Lacey Green Players, the Windmill Pre-school, St John's School Library and the 81 Club from previous years.

If you would like further information on this or any other subject then please do contact me and I shall try to help.

Paul Rogerson, County Councillor
01494 488315

Hope is the power to be cheerful
in circumstances which we know
to be desperate



GK Chesterton, quoted in The Sunday Telegraph

Groucho Marx

Space isn't remote at all. It's only an hour's drive away if your car could go straight upwards

Sir Fred Hoyle

When I picked up your book I was so convulsed with laughter that I had to set it down, but one day intend to read it.



The only safe pleasure for a parliamentarian is a bag of boiled sweets

Julian Critchley



17

Letters to the Editor

ALTERNATIVE DEFINITIONS

Many thanks for the definitions printed in the last two editions of the magazine.

I use them for typing practice on my computer as my friends want copies. The only snag is that I am laughing so much that I keep making spelling mistakes! Keep up the good work. Many thanks for your help.

Marie Wilkes

THE KILN LANE STORY, CHAPTER 2

It is now more than six months since the peaceful rural character of Kiln Lane was abruptly shattered when a long stretch of its verge was ripped up and replaced by an unsightly concrete strip. The damage, inflicted by the new resident of Kingswood House on land which does not even belong to him, was done with total disregard to either planning regulations or the impact it would have on what is surely one of the most attractive lanes in the village. Yet the battle to have this eyesore removed still goes on.

At one point, after months of assuring us that they were doing all that they could to see that the offending structure was removed, Buckinghamshire County Council were within a stamp's lick of granting permission for the structure not only to be retained but to be extended across the full width of the lane. Fortunately, thanks to the many village residents who demonstrated their concern for our local countryside by taking the trouble to write to the Council or to sign our petition, the Council are now reconsidering their position (again).

April 10th saw one of those rare Parish Council Meetings at which Councillors were nearly outnumbered by concerned village residents, determined that the damage to the lane should be repaired before any future proposals to change to the lane could be considered: a determination which met with unanimous support from our Councillors.

So the decision now rests with Buckinghamshire County Council. Should the Council decide to allow this eyesore to remain, they will be sending a clear message, both to this particular offender and to other developers, that it is perfectly acceptable to do whatever damage you like within the village, safe in the knowledge that the Council will simply cave in and let you get away with it. If that happens, then we will have

to resign ourselves to the village's character being steadily eroded by ugly constructions of this sort.

If, on the other hand, sufficient of us make it clear to the Council that we do not want to see our lanes carved up in this way, then they will have little choice but to help us to protect those features that make Lacey Green such a pleasant place in which to live. If you share this view and have not already done so, please take a few minutes to support us by writing to the Council at the address below, urging them to take all necessary action to have the concrete structure in Kiln Lane removed:

Garrett Emmerson
Head of Transportation
Buckinghamshire County Council
Wycombe Area Office
Easton Street
High Wycombe
Bucks HP11 1NH

Alternatively, if you have computer tendencies, you might like to e-mail him at gemmerson@buckscc.gov.uk.

Hopefully, with your support, we will be able to report a positive conclusion to this saga in the next Hallmark.

John Tyler



STRAWBERRY TEA

Sunday 25 June 2006

Lane Farm, Church Lane

Starts at 3pm but welcome later

Tickets £4 - call into or 'phone

Entertainment House (01844 343113)

or 'phone Bette Tyler (01844 344606)

West Wycombe Brass Band



How quickly things change! No sooner had I written the article for the last edition of Hallmark, Cherry gave us the news that she would be moving to North Africa with her family. This came as a great disappointment to us all as Cherry has been a part of the team for three years. Taking on the role as supervisor in September 2005, she had proved to be a great asset. Sadly, we all had to say goodbye to Cherry and we wish her and her family a happy and healthy life as they begin their new adventure.

This then left us with the task of finding a replacement. We managed to find Rachel Manning, who will have taken the helm after Easter. Rachel has just moved to the area and has a wealth of qualifications and experience in the Pre-School world, as well as being 'Mum' to her own two daughters. I know that the staff and committee feel very fortunate to have found her and we all look forward to a bright future together.

Life at Pre-School has continued to be busy during the spring term. The Indoor Car Boot Sale raised £400.00 and work can begin on the out-side play area. The theme for the term was 'opposites'. Big cakes and small cakes were made - and eaten! Mothers Day cards were lovingly decorated and, of course, the Easter Bunny paid a visit. The children and staff sang their hearts out and paraded their bonnets. The weather stayed fine and the children all went off in search of the matching eggs in order to claim the real chocolate ones! All in all, an excellent end to a very busy term.

We are now looking forward to the Summer term. A new supervisor, lots of new ideas and lots of new children. We are now almost full and even have a waiting list, so if you're hoping to send your little one to our great Pre-School, please put their name on the list now by calling 07821 554343.

Karen Hodgton, Chair

VACANCY

PRE-SCHOOL ASSISTANT

Windmill Under 5's has been established for more than 30 years. We are located at the Lacey Green Sports and Social Club, next door to St.John's School in Lacey Green.

We cater for children from 2 1/2 to 5 years of age, encouraging them in all aspects of learning and socialising.

The position of Pre-school Assistant is available due to increased numbers and you will be joining our existing team of staff.

The vacancy is available from April 2006 and is during term time only.

Hours are 8.45am to 12.15pm (Occasionally finishing at 1:45pm)

You do not have to be trained, or have any particular qualifications (Although NVQ level 2 would be great!) However, you do need to get on well with children, be of a cheerful disposition and be prepared to 'muck in' and work along with our happy team.

For more information please call:

Karen Hodgton on 01844 275009

Lacey Green, Loosley Row & Speen Parish Council

Another year has passed, we have had our Annual General Meeting and our Chairman - Councillor Don White confirmed various projects and commitments we had dealt with during the year. We are still continuing with the purchase of the Methodist Church burial grounds, the paperwork is nearing completion, and all that remains is to re-position the gates and memorial stones and form an access to the grounds at the rear of the property.

We have been told that the new speed limits should be in place by the time this magazine reaches you, we would hope that all motorists will adhere to these new limits - they are there at your request. We have also been advised that, once the new speed limits have been signposted, we will have our village gated. Hopefully, this will further reduce motorists' inclination to speed through our village. We are at present considering roundabouts to further slow the flow of traffic through the village outside the school start and finish times. A condition of placing roundabouts anywhere is that they must be illuminated at night. To this end, as at present, there is no street lighting. We have encountered our first problem, but we are looking at the possibility of using solar panels. Should this prove unviable, we may either shelve the project or run electrics. We feel that, with the probability of more houses being built in the Risborough area, motorists will use Main Road and travel through Walters Ash & Naphill to access High Wycombe, avoiding the Pedestal roundabout, or to travel to various towns via Cryers Hill and Amersham Hill, we need to make Main Road not so attractive to motorists.

The last remaining traffic issue is that of Culverton Crossroads, the latest news we have on this never ending saga is that Bucks County Council is working towards September 2006, subject to land acquisition! Having had this on our agenda for many, many years, we hope that it does not fall at the last hurdle.

Moving away from traffic, new regulations have been passed 'Clean Neighbourhoods & Environment Act 2005' allowing Parish Councils to issue fixed penalties for littering, graffiti and fly posting offences from the 6th April 2006, should they so wish. Within this act, will be a new systems for controlling dogs. Local authorities

will be able to designate areas as 'Dog Free Zones', (this could apply to the village playground at the sports field) dogs may be banned from certain areas and owners may be required to have their dogs on a lead whilst outside their property and clean up after their dog if it has fouled on areas of land within the Parish. Parish Councils will, if the wish, be able to issued fixed penalty notices or prosecute in the Magistrates Court those who offend.

We do hope that the villagers will respect the verges etc. and none of the above will have to be implemented.

Cathryn Davies

THINGS THAT GET BETTER WITH AGE



- a game to see how quickly you (and your family or guests) take to unscramble the most items. Answers overleaf, page 22.

- 1 IWEN
- 2 STIQUNAE
- 3 ESCHEE
- 4 INFE TAR
- 5 LEPAP DICRE
- 6 EROSMIME
- 7 GIVNASS SNODB
- 8 DRYNAB
- 9 SLICACS SCRA
- 10 TRALERUITE
- 11 LARE TEETAS
- 12 NOCI LECTOSNICOLT
- 13 LUBE SNAJE
- 14 TRUCKAFIE
- 15 CAPENITE

The secret of staying young is to live honestly, eat slowly and lie about your age!



Lucille Ball

Loosley Row & Lacey Green WI



Second Thursdays (except August) 2.00pm Village Hall

Spring seems to have arrived at last, but whilst awaiting for Spring to burst we have enjoyed some interesting speakers. We were kept busy when Sue Crisp came and demonstrated her craft of Rag Rug making. She brought with her some lovely examples of rugs, cushions and mats that she had made with colours all beautifully blended. Following her demonstration, many of us had a go – I think we have a long way to go before producing anything quite like her.

We celebrated our birthday in March, and were entertained by the Belmont Duo, who performed some very entertaining tunes, and recited some poetry, all with a theme of birthdays. This was followed by a most enjoyable tea provided by the committee.

This month Jean Hall showed us some wonderful slides of church stained glass windows, and church artifacts in Buckinghamshire. It is amazing what a wealth of beautiful old stained glass and also some lovely modern glass there is in Buckinghamshire if we were only to really look.

A group of our members went to the *Old Time Music Hall* in High Wycombe, which we all enjoyed.

You will no doubt notice that Barbara Hobdell, our usual author of our reports, has not written this one, because sadly she is busy preparing to move from Lacey Green. We shall miss her and Colin immensely for all they have both done for WI and the village. All her friends from WI wish her well, and hope Colin and Barbara will be very happy in their new home.

Our Thursday morning coffee mornings in the village hall are continuing, so we look forward to seeing anyone who would like to come for a coffee, and meet friends. This is from 10.00am – 12 noon.

Jill Baker

Lace Was Back in Lacey Green

Risborough Lace-makers held their first Lace and Craft Day in the Village Hall in March when about 80 Lace-makers from surrounding Lace Groups met and made lace together.

Everyone present really enjoyed themselves, and there was a buzz of conversation for most of the day, but of course, lace-making was the main objective. There were three traders present, selling everything from items for the lace-maker to embroidery thread and kits for cross stitch. We had a wonderful exhibition of antique lace and other information of interest, and several visitors came just to look around.

As well as enjoying ourselves, we raised £211 on the Raffle for the Thames Valley & Chiltern Air Ambulance Trust.

This event was so successful we have booked the hall for another Lace Day next year.

Jill Baker

THINGS THAT GET BETTER WITH AGE

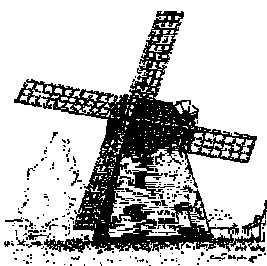
- answers to game on previous page, 21



- 1 WINE
- 2 ANTIQUES
- 3 CHEESE
- 4 FINE ART
- 5 APPLE CIDER
- 6 MEMORIES
- 7 SAVINGS BONDS
- 8 BRANDY
- 9 CLASSIC CARS
- 10 LITERATURE
- 11 REAL ESTATE
- 12 COIN COLLECTION
- 13 BLUE JEANS
- 14 FRUIT CAKE
- 15 PATIENCE

The Windmill WI

First Wednesdays 7.45pm Village Hall



Our first meeting for 2006 was in February, when our speaker was one of our own members. Mrs Jane Elmidoro, who talked to us about *Understanding and the Benefits of Reflexology*.

This was a most interesting meeting and Jane certainly helped us to comprehend and appreciate this subject.

For our March meeting we again kept 'it in the family' – this time our speaker was John Tyler, the son of member Bette Tyler. John's subject was *The Changing Wildlife of The Chilterns* and he held us spell bound with his fabulous slides and his extensive knowledge of the topic.

During March, we again held a very successful jumble sale – I think we are getting well known in the 'jumble world' for having good quality jumble – the queue waiting to come into the hall stretched down to the main gate!

Two of our members attended the Group Meeting held at Downley. The speaker, Tom Fremantle, shared his experiences with us of his cycle from Swanbourne, North Bucks to Swanbourne in Australia. It took him about 15 months and it was certainly some journey. The talk was accompanied by some fascinating slides.

The speaker for our April meeting was David Summers, the Editor-in-Chief of The Bucks Herald, who talked to us about the 'ups and downs' of editing a local newspaper. Mr Summers proved to be a most interesting and entertaining speaker.

We have again welcomed new members – bringing our membership to over 40 – but we always have room for more! We meet as above.

Talks we are looking forward to in the next few months are *The Mercy Ships* with Ken and June Brazier; *The Language of Flowers*, a flower arranging demonstration with Mrs Pat Trunkfield, *Tudor Life in Costume* and in September, an Egyptian Belly Dancing demonstration! Come and give us a try!

Daphne Williams

Latest News from Robert and Lady Bateman

in a letter from his home in California to the editor, enclosing their generous donation. Her photo appears on page 8 of the February 2005 edition.

"We found the February 2006 edition particularly interesting. I remember Con Baker and Mr Janes delivering bread in his horse trap. In those days, we had well water. And, of course, Mosh Saunders was one of the best established house builders in the fifties - when perhaps 3 houses were built in the village each year.

Surprisingly, I had not heard that Nigel Mobbs had lived in the village, nor that he had died. I was at school with him, where he ran the beagle pack with great efficiency. And at Oxford, where I think

he was a leading member of the hunt club, the Bullingdon. When I worked in Slough in 1970, he was the highly regarded President of the Chamber of Commerce. In Canada, we leased a building from Slough Estates. A small world!

My mother remains strong and we expect to celebrate her 100th birthday at the beginning of August. She enjoys the Hallmark...."



Never be afraid to try,
Remember. Amateurs built the ark
Professionals built the Titanic

When you've reached a certain age and
think that a face-lift or a trendy way of
dressing will make you feel twenty years
younger, remember - nothing can fool a
flight of stairs

Dennis Norden

I was standing in the park wondering why
frisbees got bigger as they get closer.
Then it hit me.

The statistics on sanity are that one out
of every four of us is suffering from
some form of mental illness. Think of
your three best friends. If they are
okay, then it's you.

- Rita Mae Brown

It's better to keep your mouth shut and
give the impression that you're stupid
than to open it and remove all doubt

Rami Belson

Heaven is where the police are British,
the cooks are French, the mechanics
German, the lovers Italian and it's all
organised by the Swiss. Hell is where the
chefs are British, the mechanics French,
the lover's Swiss, the police German and
it's all organised by the Italians.

Sketch by Brian
Painter



Lacey Green Community Plan

Things have been fairly quiet over the past few months. This is partly due to the fact that many of the issues that we wanted to tackle have been dealt with, more or less successfully. The one issue that we have been unable to resolve is the proposed redevelopment of the Methodist Chapel site.

When we asked for your views in 2004, the majority wanted this site to be kept for community purposes. We persuaded the Planning Authority to declare the site for 'community use', which, in theory means that it cannot be used for housing only. Whether the Planning Authority will stick to its agreement is, however, anyone's guess. There is a lot of pressure from many directions with regard to the shortage of housing.

As many of you will have seen, small plots of land are now being offered for sale on green field sites, without any planning permission. Obviously there is an expectation that the planning authorities will have to relax their attitude and allow at least some of these sites to be used for housing. Bingo for the lucky winners.

We do at least have a Village Design Statement for Lacey Green and Loosley Row. This has not yet been formally issued, and is still going through a long-winded approval process. We hope that it will ultimately be of

value as supplementary planning guidance. But the sort of pressures referred to above may play havoc with all our good intentions. Watch this space!

We have just received a grant from DEFRA, through the good offices of Bucks Community Action, towards the production of a Parish Plan. This will be a formal statement of the ways in which we would like to Parish to develop over a period of some years, perhaps ten or more. It will reflect the views of the community at large and will therefore take up many of the points raised in the survey we carried out last year. The timetable calls for the final document to be completed by the end of 2006. The Community Plan Steering Group will carry out most of the work, but if anyone else would like to help, we would appreciate anything you may be able to contribute. Just call us.

The only other item of real interest is that our part-time post office is still operational on Monday and Thursday mornings in the Millennium Hall. Frankly, we were expecting its closure at any time and I may be tempting fate by even mentioning its continued existence. Do help us by using it much as possible.

Tony Molesworth

01844 344975 or email: molechem@yahoo.co.uk

Remember Chernobyl

26th April this year marks the twentieth anniversary of the nuclear disaster at Chernobyl. The northerly winds at the time blew 70% of the radiation over the country of Belarus. The long term effects of this are unknown, but it is expected that the area will suffer from contamination for thousands of years.

Sadly, the population of Belarus is continuing to decline and the incidence of cancers etc is increasing. Shortly after the explosion, the people of Austria built a hospital in Minsk dedicated to treating children with cancer. It is a bright modern hospital with colourful murals on the walls supplied by families from Switzerland. This building is no longer adequate and Chernobyl Children Life Line is raising money this year under the banner of 'Remember Chernobyl' to build an extension.

We are putting the proceeds of our raffle this year to this cause. Our first prize is, as usual, a beautiful hand made luxury quilt. The second is an autumn weekend

break in a cottage in Stow-on-the-Wold, the third is a selection of wine and there are numerous other prizes.

Please support our efforts to build this new hospital extension. Thank you.

Ann Smith, Chairman – Risborough Link 173
01844 345558

Three million DVDs were sold in the UK in one week; ten million were given away with newspapers



HMV / BBC Online



LACEY GREEN PRODUCTIONS

**WOULD YOU LIKE TO CONSIDER JOINING OUR
LOCAL THEATRE GROUP?**

If you are interested, experienced or not, to become an actor, member of the stage crew, ticket seller or any other aspect of amateur theatricals, why not have an exploratory chat about it?

Ring Peter or Val Brookhouse on 01844 344207



Sketch by Brian Panter

Heavenly Bodies



Photo of Juniper
taken by Chris Dignan, April 2006

It's a summer of highs and lows for the night sky, as we look at the Moon, the centre of our Galaxy, and Jupiter.

If you've thought that the Moon has seemed unusually high in the sky for the last few months, you'd be right! It's the highest for almost 19 years. This is due to the Moon's orbit being on a slight tilt to Earth's and that tilt is at its maximum this year, pushing the Moon to its highest – and lowest. The Moon is also rising much more northeast than the usual east and setting more northwest than west. In 2015, the Moon will be at its lowest – it won't be as high as now until 2025.

This summer sees the return of Jupiter, as Earth on the inside lap catches up again with the king of the Solar System. It's the closest this year to us on May 4 and will be pretty good to watch for the next two or three months, though low-ish in the sky.

You can find it looking south after 10.30-11pm by finding the bright star (Spica) about an outstretched hand's height above the horizon, and then panning left slightly to see a bigger and very bright object – that's Jupiter. Added help comes from the Moon, which is just below Jupiter on the evenings of 12-13 May, June 8-9, July 5-6 and August 2.

Summer is also the one chance we get to see the centre of our Galaxy, the so-called Milky Way. Again this stays low in the sky from the UK and is best after about 11.30pm. Being pancake-shaped, and Earth being two-thirds of the way out like a pea buried in a thick pancake, we can look inwards to the rich star

layer and the bulge at the centre. And it's not far from where Jupiter is in the sky.

When you find Jupiter, go left to find a bright, orange-ish star still low in the sky (Antares, a red super giant, which is left of the Moon on June 9). The stars and smudges left of this star (Sagittarius) are in the galactic centre. A set of ordinary binoculars will reveal a swarm of more stars if you are blessed with dark skies and are away from lights.

Clear skies are, of course, the pre-requisite to see all these wonders, and just in case the clouds are kind to us, here's another highlight so you can impress your friends! Show them Mars and Saturn at around 9.30pm on June 28 when you'll see the thin crescent Moon near the western horizon with a dot either side – the dot to the left is Mars and Saturn is to the right (use binoculars to make them clearer).

Chris Dignan



Victorian post-box by Lacey Green School
Painting by Stella Boll
(01844 347268)

Lacey Green & Loosley Row Sports & Social Club

CRICKET SECTION

By the time you read this, the 1st X1 will have played the first round in the N Power Village KO Cup Competition against Chesham Bois at Lacey Green (weather permitting). The first league matches follow on the 6th May with a starting time of 1.30pm. All well-wishers welcome at the ground.

At the AGM Robert Dell Esq, was again elected 1st X1 captain with Mr Duncan Palmer as his vice-captain. For the 2nd X1, Martin 'Teeny' Roberts Esq, took over from Mr David Sanders, who will act as Vice-captain. I've heard (belatedly) that we have a new Sports Club secretary, Mr Gordon Lennard. He'll do a great job, I'm sure. Also, I understand we are to have a new President. If the new is anything like the former the future of the club is assured.

Last season was one of consolidation in the Premier Division and this year I can see no reason why the 1st should not improve on that performance. My fingers are crossed! The 2nd X1 performed well for most of their season until they had to give up their experienced players to the 1st team. They even had to cancel their last two matches – something I've never known to happen at Lacey Green before. And all because a few 'players?' thought it not worth playing if there were no medals to be won. Pathetic!

It's always sad when former players and good companions pass away and the last few years have seen far too many leave the field of play. The most recent:

Ray Biggs A draftsman by profession, Ray certainly knew his angles when it came to batting. Long ago, we used to open together for the 2nds and, while I grimly defended my wicket at one end, I could only watch in admiration as Ray stroked the ball between the fielders with seemingly effortless ease. One afternoon, after a half-century that seemed to arrive in minutes, a bowler, sweaty and frustrated, snarled at me "Who is this bloke? Where'd you find him?" "He doesn't do it every week", I said soothingly. "I should b.... well hope not!" the bowler snorted. Of course, Ray had his off days, as we all did. But when in full flow his batting was a joy to behold. We won't mention his fielding; suffice it to say in the field his mind seemed often on a higher plane. Ray.... a clever, witty, good companion.

Walt Lacey In the early fifties, Walt took a ragtag bunch of youngsters plus one or two ageing ex-1st X1 men, persuaded us to change our varied dress for 'whites', and by the following season had transformed us into winners of the HW & District 6th Division. Quite a feat considering many of us had never before played in a 'proper' match. Walt was a sound tactician and had a great knowledge of the game and I rate him the best captain I ever played under. He taught us with a word of advice here and another of encouragement there. On the field he was a stickler for discipline but never harsh or unfair. Off the field he was the jolliest companion you could wish for. Thanks for what you did for us, Walt.

Jim Fowler Jim was an all-rounder. He had the concentration and determination to be a winner at any game he played. Originally from Lincoln, he had the good sense to marry a local girl and play most of his sport in this area. Playing for Lacey Green, his batting and bowling strengthened the 1st X1 considerably. A tally of seven 1st division winners' medals plus a runners-up medal, one second division winners medal, three KO Cup winners medals plus two runners-up medals, speak for themselves. A dogged opening batsman and a very accurate bowler, he was one of the stronger players in a very strong team at the time. Jim also played football for us. In his best season he scored fifty goals in twenty matches. As I said, a great all-rounder.

Bert Rutland Bert was long before my time so I never saw him play but I'm told by those who did that he was a very good 2nd X1 cricketer and an even better footballer. I did meet him once some years ago and found him a very pleasant man to chat to.

The club extends condolences to the relations of all our former players.

A couple of thoughts: The Government is keen to give enormous sums of 'our' money to athletes and to host the Olympic Games. So, why is it that clubs like ours that have done a great job for so many years have to struggle to survive?

And a word of thanks to the 'few' who work in their spare time to keep our Sports Ground in such good condition. Well done, lads

Geoff Gomme

Financial Planning

Life assurance. I know it probably is one of the most boring, morbid subjects around and let's be frank, you are hardly going to bring the subject up when the meal has been historic, the wine freely flowing and someone has just mentioned about his every increasing property portfolio.

But maybe that is the problem. Recent research from Egg, the Internet bank, suggests that a high proportion of mortgages are unsupported by adequate life assurance to clear them in the event of the death of the borrower. Why? Maybe we will soon invent a pill and we are all going to live forever. But before this exciting immortal concept is a reality, I suggest some realistic reasons.

There could be several reasons for the shortfall, the most probable of which is that when people increase their mortgage, either to move home or to release equity to spend on other things such as home improvements or a new car, they forget to ensure that they have enough life cover. Also, in some cases, people may have switched from an endowment mortgage to a repayment basis and cancelled their endowment policy forgetting that this provided valuable life assurance.

Whatever the cause, Egg estimated that the average mortgage holder is almost £40,000 light on life assurance cover. Yet, at the same time as this shortfall has developed, the last decade has seen a lowering of life assurance premiums, as fear of AIDS has receded and life expectancy has grown longer.

This means that the cost of protecting a mortgage has fallen. For a non-smoking man of age 35, the monthly cost of proving £100,000 life assurance to age 60 can be now as little as £11. Even if he smoked, the monthly premium would be about £18. For a woman, it would be about £9 per month for a non-smoker or about £15 per month if she smoked. These are hardly amounts of monthly premium, which would present a serious financial outlay.

Furthermore, one of the areas that many families could so easily forget is just how much of an economic contribution a mum makes to the family's welfare. According to life assurer Legal & General, in its "Value of a Mum" survey, replacing the service provided by the typical mother would cost more than £20,000 a year. So even for a "non-working" mum – a phrase that should bring tears of laughter to the eyes of those involved – needs to be insured for a substantial sum, at least as long as the children are at home and needing attention. I know what certain chaps are now saying "£20,000 a year, you must be joking!"

Interesting, the same survey indicates that two out of three men underestimate the cost of replacing a mother by almost half. So it's a relatively cheap type of insurance, provides a large amount of cover for many ages and, although it will never replace someone in the event of a claim, it will allow the remaining spouse to maintain his or her standard of living. Time to add up your total life cover?

Steve Wilkinson



Painting by Stella Boll (01844 347268)

Andy's 'ints

More Leaks... continued from previous issue

It is unusual to have a leak in your electrical installation in your home but it is possible and a faulty appliance can use electricity. If your home has a modern trip fitted, this should detect the leak and turn off. Fortunately we all have a meter fitted in our homes and this is the place to look for problems. When everything is turned off in your home the meter should not be registering any electrical use – depending on the type of meter you have fitted look for a flashing light, a rotating disc or a moving dial. The meter is also useful to show how much electricity your home is using when you think everything is turned off. If the meter shows you are using a lot of electricity and you think most items are turned off, check the immersion heater is not turned on – this is easily forgotten.

Some items in your home are designed to leak electricity when unusual circumstances occur. A desktop computer has control circuitry so that should there be a surge in the supply voltage this will be leaked to the earthing circuit. If you are getting regular problems with your computer it may be that the earth connection is faulty or non-existent. Most of the homes in our villages are fed by overhead wires and it is important that an effective earth is part of the installation. If you have any doubts about your electrical installation, get a specialist in and have it checked.

Heating losses from your home could be considered to be leaks. If there are a lot of draughts in your home you need to look for the causes. If you have windows where the wind blows in through windows on one side of your house and out the windows on the other side consider

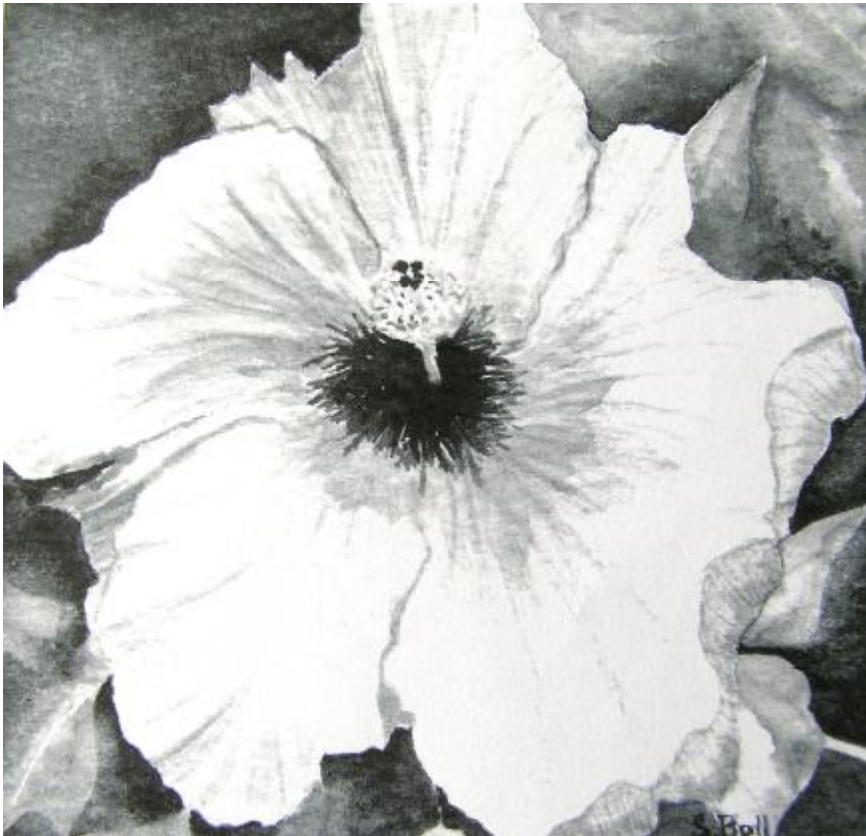
fitting draught excluding strips around the opening windows. Sticky foam strips are inexpensive and easy to fit onto a clean dry surface. Fitted seal strips in timber windows do compress over time and become ineffective, these can be replaced – they are fixed in a slot around the window. If you have fitted carpets look around the outside edges of the rooms and see if there is a dark strip where the carpet meets the skirting, if there is it indicates that a lot of air is passing through the gap. It is worth peeling the carpet back and sealing the gap between the floor and skirting board – pack strips of newspaper in the gap. Chimneys to open fires represent the cause of substantial heat losses in your home, if you do not use the fireplace seal it up but leave a slight hole to ventilate the chimney, for fireplaces that you use occasionally, temporarily seal the chimney when not being used by fitting a piece of cardboard over or inside the fireplace opening. Reducing the air going up a chimney will decrease the amount of air being drawn into your home.

Fuel losses from you car should be obvious, from the smell of petrol if it is petrol driven, or patches of oil under the vehicle if it is diesel driven. Losses caused by rubbing brakes are not so obvious – with your car parked on a slight slope, not more than 1 in 20 - release the handbrake and your car should move forward. Alternatively on the journey down Woodway once you have passed under the power lines beyond the turn down Wardrobes Lane your car should maintain a constant speed with very little throttle effort down to Woodway Farm Machinery. If you have a Nissan Micra automatic or similar car where the engine provides no braking effect, constant speed should be maintained without any accelerator.

Andrew Stone



Watercolour by Stella Boll
(01844 347268)



Hibiscus painting
by Stella Boll (01844 347268)

Tip

Some sweetener dispensers
make excellent seed
dispensers

Tip

You can sow seeds singly by
using the dampened end of
a matchstick

Tip

To remove green grass
stains from clothes, rub
gently with vodka before
washing

Tip

Lay a piece of garden hose
among your plants to keep
cats and birds away. They
hate what they think is a
snake



News from St John's Parish Church

(Rector – The Reverend Denise Critchell)

Serving the village communities of Lacey Green, Loosley Row and Speen

Dear All

It has been a busy time again, as it always is in the church calendar leading to the Easter season. As always, the music and singing of the choir are wonderful – details on the notice board should you like to come and join us. The church is always beautifully decorated with lovely floral arrangements too, most particularly at this time of year. Throughout the services we remembered the Last Supper, the Passover, the Betrayal and the Resurrection. These were thought provoking, starting with the 'stripping' of the church at the 8.00pm service on Maundy Thursday. This was a solemn and moving service and in such contrast to the Easter Sunday morning service, which was joyful and upbeat as we celebrated the Risen Lord – the centre of our faith. The Easter Sunday services started outside the church in glorious sunshine and a large, simple wooden cross was placed in the ground just across the road from the church and then decorated with bright yellow daffodils - a witness to everyone passing by on Main Road. We then had to queue to get back into church – not something you see very often, unfortunately!

The APCM meetings were held on 9th April. Full details can be obtained from the secretary, but briefly we received presentations of the Annual Report, the Vicars Report and the Financial Accounts, also the election of PCC members and Sidespersons took place. The figures are: - last Christmas over 1500 people attended the church services, Denise had 90 visits related to funerals, weddings, baptisms and confirmation preparations and 'a healthy income received allows us to boast of the umpteenth year of growth in the Church's overall income!' Marvellous! We are trying to obtain grant funding from the Council for the Care of Churches and the Heritage Lottery Fund for a complete restoration of the church organ. The work will be very expensive, but the organ is an important historic instrument, which we should feel proud to have in our church. If anyone has any brilliant fund raising ideas, we would love to hear them.

Plans are still going ahead for the alterations to the church building to create extra space and facilities. More news of this to follow. The plans will eventually be displayed on a notice board in the church and the fund raising will begin in earnest.

The Quiet Garden at 'Millbooke' in Goodacres Lane will be open again this summer starting on Wednesday 12th April. This is an opportunity for stillness and reflection – more details on the notice board.

The regular Prayer Meetings and House Groups continue to flourish, as do the Youth Group and Toddler Praise gatherings, where the emphasis is on learning through participation and education.

Lighthouse 2006 will be held at the Upper School sports field in Princes Risborough. This is a Christian holiday week for local children and aims to tell children about God in a fun way and that the Bible is God's word and is as relevant today as it was 2000 years ago. Details and application forms can be obtained from the Good News Bookshop in Duke Street in Risborough.

The Confirmation Groups continue to run throughout May and June with 16 attendees. Fiona is training the team choirs, which will no doubt produce some excellent results. The Confirmation Service will be held on Monday 19th June at 7.30 pm at St John's Church.

Forthcoming Events

May

14th – 20th Christian Aid Week
Wednesday 17th Quiet Garden open at 'Millbrooke', Goodacres Lane
Sunday 21st Dedication of the new Monks Risborough Church Hall by the Archdeacon of Buckinghamshire, with a celebration and a Pig Roast supper afterwards.

June

Sunday 4th Songs of Praise for Pentecost at 10.00am and 6.00pm
Monday 19th Confirmation service at 7.30pm at St John's Church
Wednesday 21st Quiet Garden open 10.30 – 12.30 weather permitting

July

Wednesday 21st Quiet Garden open 10.30 – 12.30 weather permitting
24th – 28th Lighthouse Week held at Princes Risborough

Regular Services

The times and format of weekly services at St John's are listed below for reference:

SUNDAY

8.00am Holy Communion (1662) 1st, 2nd & 4th Sunday
10.00am All Age Family Eucharist 1st Sunday of the month
10.00am Parish Communion 2nd, 3rd 4th (&5th) Sundays
11.30am Family Service 3rd Sunday of the month
6.00pm Choral Evensong 1st Sunday of the month

TUESDAY

9.30am Communion Service in the Lady Chapel at St John's
2.00pm Toddler Praise – each Tuesday afternoon during term time

WEDNESDAY

10.30am Group Communion Service at St Mary's Church, Princes Risborough

1st and 3rd Sundays at 10.00am Family orientated service, all age family worship.

Sunday School 2nd and 4th Sundays, held in the Upper Room at the church.
For more details contact Jenny King on 01844 343910

Full details of all services, articles and detailed information about St John's Church is published in the Parish Magazine 'Viewpoint', which is published monthly and also on the notice board outside the church.
Be blessed by your Parish Church – we look forward to meeting you, so do come and join us.

Andrea Bennett ☎ 01844 274550

Our Windmill Now Has It's Own Website!

www.laceygreenwindmill.org.uk

Lacey Green Windmill will be open to the public 2.30 - 5.30 pm on Sundays and Bank Holiday Mondays between 1st May & 24th September in 2006. On Sunday 14th May, we hope to have the sails turning (weather permitting), as part of National Mills Weekend.

The windmill is the oldest smock mill to survive in the country. It was built around 1650 and was in use until 1915. The mill retains its original massive mid 17th

century wooden machinery. Restoration to preserve the mill and bring it back to working order has been carried out since 1971 by members of The Chiltern Society.

Please park in Pink Road. Admission is £1 for adults & 50p for children. A booklet about the windmill is available for £1.50. For enquiries, please telephone 01844 275871. You can now see further details on the windmill's own web site as above.



Village Directory



<u>Organisation</u>	<u>Contact's Name</u>	<u>Contact's 'phone no.</u>
81 st Over-60s Club	Carol Knight	01844 343093
Happy Wanderers Walking Club	Roger Brudenell	01844 346893
Horticultural Society	Terry Fendom, Chairman	01844 342636
Jingle Tots	Jenny Stothard	01844 344441
Karate Club	Richard Peace	07768 896078
Kinder Gym	Jenny Stothard	01844 344441
Lacey Green Parish Council	George Crombie (Sec)	01494 488240
Lacey Green Productions	Val Brookhouse	01844 344207
Lacey Green Singers	Jane Brown	01844 346071
Lacey Green Sports Club	Jane Oakford (Sec)	01844 346295
Lacey Green Twinning Assoc	Not currently active	
Lacey Green Village Hall (Bookings)	Karen Hodgton	01844 274254
Lacey Green Windmill	Michael Hardy	01844 343560
Loosley Row & Lacey Green WI (afternoons)	Jill Baker	01844 275442
Pilates	Sue Keeling	01844 346656
Police (Area Beat Officer)	Moira McKinny	01296 396099
Residents Association	Not currently active (Laurence Rostron, Sec)	01844 343276
St. John's Church	Rev Denise Critchell	01844 347741
St John's School Parents Association	Sue Robinson	01844 342574
West Wycombe Decorative & Fine Arts Society	Ginnie Brudenell	01844 346893
Whiteleaf Bowmen	Dave Evans	01494 538235
Windmill Under 5's Playgroup	Karen Hodgton	01844 275009
Windmill WI (evenings)	Stella Boll	01844 347268
Yoga Group	Annie Cahill	01844 343643

Village Diary May 15 – Aug15

All events at Lacey Green Village Hall unless otherwise specified. Includes some at Speen and North Dean

The Maize Maze will be open during the whole School Summer Holidays

May 17	Horticultural Society (3rd Wed of Jan, Mar, May, Jul, Sep, Nov)	AGM 8pm
May 28	Happy Wanderers' normal walk #	10.30am
Jun 6	81st Over 60's Club (1st Tue of month)	2pm
Jun 6	Parish Council Meeting at Lacey Green Village Hall *	7.30pm
Jun 7	Windmill WI (1st Wed of month)	7.45pm
Jun 11	Loosley Row & Lacey Green WI (2nd Thu, except Aug)	2pm
Jun 14	Happy Wanderers' short walk (2nd Wed, Village Hall car park)	10.30 am
Jun 15	Happy Wanderers' Midsummer evening stroll & supper	TBA
Jun 17	Los Squideros Mexican Band - Speen Village Playing Field Marquee	TBA
Jun 18	Speen Fun Day - Village Playing Field	TBA
Jun 25	Strawberry Tea at Lane Farm, Church Lane with Brass Band	3pm
Jun 25	Happy Wanderers' normal walk #	10.30am
Jul 4	81st Over 60's Club (1st Tue of month)	2pm
Jul 4	Parish Council Meeting at Speen Village Hall *	7.30pm
Jul 5	Windmill WI (1st Wed of month)	7.45pm
Jul 8	Speen Fete – Speen Playing Field	TBA
Jul 12	Happy Wanderers' short walk (2nd Wed, Village Hall car park)	10.30am
Jul 13	Loosley Row & Lacey Green WI (2nd Thu, except Aug)	2pm
Jul 15	Grand Summer Picnic Party at School.	TBA
Jul 18	Horticultural Society visit to Mary Berry's Garden at Penn	2.30pm
Jul 19	Horticultural Society (3rd Wed of Jan, Mar, May, Jul, Sep, Nov)	8pm
Jul 29	North Dean Fete – North Dean Playing Field	TBA
Jul 30	Happy Wanderers' normal walk #	10.30am
Aug 1	81st Over 60's Club (1st Tue of month)	2pm
Aug 2	Windmill WI (1st Wed of month)	7.45pm
Aug 9	Happy Wanderers' short walk (2nd Wed, Village Hall car park)	10.30am
Aug 10	Loosley Row & Lacey Green WI (2nd Thu, except Aug)	2pm

* Members of the public are always welcome to attend these meetings

Starting place informed on previous walk - usually within 1/2 hour's motoring of village

SOME LATER DATES FOR YOUR DIARY including in Speen & North Dean

Sep 2	Horticultural Society Annual Show (see loose insert)	4pm
Sep 9	Speen Ball at Willotts Farm Marquee	
Nov 11	Windmill Artists Bistro & Arts Exhibition	TBA

~~~~~  
**CLOSING DATE FOR COPY FOR THE AUTUMN EDITION**  
**July 17th 2006**  
~~~~~

Published quarterly by the Village Hall Management Committee.
Printed by Risboro' Printers Ltd., Station Parade, Princes Risborough (01844 344827)