

HALLMARK

THE LACEY GREEN & LOOSLEY ROW MAGAZINE



"Summer"
Painted in colour on silk by
Hebe Grout

May 2007

NUMBER 202

ESTABLISHED 1970

HALLMARK

THE LACEY GREEN & LOOSLEY ROW MAGAZINE

SUMMER 2007

Hallmark is published quarterly by the Lacey Green & Loosley Row Millennium Hall Management Committee, although opinions expressed in comment or contribution do not necessarily represent the collective view of that committee.

Our aim is to mirror the mark that the Village Hall makes upon our community, to publish the activities of all Village organisations, and to provide a forum so that the rights, the wrongs, the well-being of village life can be aired.

News from all the Village clubs, societies, churches and school, stories of local interest and entries for the Village Diary are always welcome. In addition, any suggestions for improving Hallmark.

VILLAGE HALL EXECUTIVE COMMITTEE

Clive Hodgton (Chair), Lee Harte (Treasurer), Rachel Panter (Vice-Chair),
Jo Tope (Secretary), Karen Hodgton, Betty Tyler, Norman Tyler

VILLAGE HALL BOOKINGS

☎ CLIVE OR KAREN on 01844 274254 (Answering service)

EDITOR

✉ Norman Tyler (assisted by Mike Piercy), 5 Woodfield, Lacey Green,
✉ Bucks HP27 OQQ (2/3rds down Woodfield, on the left)
☎ 01844 344606 (with answering service & fax)
Email norman@tyler333.fsnet.co.uk

ADVERTISING MANAGER

✉ Chris Baker, "Woodpeckers", Kiln Lane, Lacey Green, Bucks HP27 OPT (past the pond on the left)
☎ 01844 275442

**The Autumn Hallmark will be published in August
- closing date for copy is July 17th**

Chairman's Report

May 2007



Welcome to the latest edition of Hallmark. As I write this the summer appears to have arrived early and long may it last, although of course a drought would be inevitable if it did!

I would like to thank all of you who attended our AGM in March and everyone present agreed with the committee's feelings that life at The Village Hall is running smoothly and the amount of use is exceptional.

Our aim is as always, to keep the hall in excellent condition and during the summer we intend to have the main hall floor stripped, sealed and re-polished as well as some other interior decorating to keep up the high standards.

In the last edition of Hallmark we announced that this year there will be no charge for weekday use for all "village" organisations in recognition of the 200th edition of Hallmark. This of course has been very well received

by all concerned. We felt that this would be a more fitting tribute to this very worthwhile magazine than spending the money on a special anniversary edition. This way all the users will benefit directly.

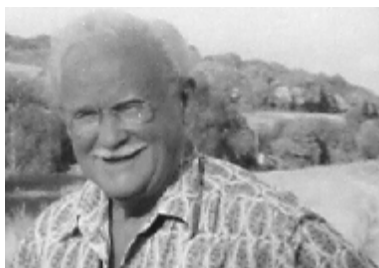
Please keep an eye on the notice board outside the hall and the list of users in Hallmark, there's lots to do and activities to keep everyone happy. If you can't find what

you're looking for perhaps you could start a new activity so please get in touch!

We wish you all a great summer and hope to see you at the hall soon.

Clive Hodgton, Chairman, Village Hall

From the Editor(s)



You would have to travel a long way to find another genuine traditional hand-working forge and foundry that goes back at least to the

middle of the 19th century, as we are lucky to have in Loosley Row! On pages 22-24, we have an article on our village's rare most interesting **Gomme's Forge**. It is based on, and uses with their permission, the text and most of the pictures from their website at www.pgdl.co.uk/gommesforge. Their website shows the pictures in colour, of course. Even better, you can see a lot of their products exhibited in their showroom.

The coming new village website, www.laceygreen.com, is being organized by our Village Hall Chairman - as if he hasn't already enough to do. He has already registered it and it will have links to all known websites of interest to our villagers. I will be helping but we could do with **further help** from any other interested person - any offers? We plan to have historical photos and articles. In the meantime, you may like to visit www.pgdl.co.uk

There is no article from **Cllr Paul Rogerson** because of the District and County Council elections. However he has provided news of Culverton Crossroads, page 12.

It has been suggested to me that someone organizes a **Village Feast or Meal** in the Village Hall aimed at villagers meeting and chatting to other villagers **not** already well known to them. The suggestion was that we have tables running the length of the Hall, rather than the usual smaller tables for 4 to 12 already-known friends each. A self-service buffet would not require waiters and could enable people to collect their next course, then return to sit next to different people.

It seems to me that most people of an age likely to be

interested would probably prefer a 2-course, rather than a full 3-course meal, for which the suggested charge of £10 per person has been accepted by a local excellent quality caterer, providing there were at least 100 diners and enough volunteers to do the buffet-serving, clearing up and washing up. **Any volunteers, please? The meal would be lunch on Sunday 14th October.**

This date is available, would be well after the main holiday season and well before Lacey Green Productions' dinner theatre on 23rd and 24th November. If you would agree to help out, please send a message to me, details on page 1. To ensure we can make firm bookings of both the caterer and the hall, we will need by 17th July to receive both enough volunteers and enough cheques for £10 per person (made out to Lacey Green Village Hall and dated 1st October). The cheques would not be cashed until the day and would be returned if the event didn't go ahead. August's Hallmark could then confirm whether the event is on.

The FA Cup Fayre at St John's School on Sat 19 May promises to be an enterprising enjoyable event for any villager, with or without a family, whether or not they're interested in football! Anyone who thinks our village doesn't have enough going on should go - or hang their head in shame. See the opposite page for details.

We are told the **Maize Maze** will be the most challenging yet, but we don't yet know how. See p16.

We have a new, more comprehensively detailed list of **What's Happening** in our village, with contact details - see p43.

Plus our usual collection of regular interesting newsy articles. You've got to go through all the pages to make sure you don't miss any. Hope you enjoy them!



~~~~~  
**Money will buy a pretty good dog  
but it won't buy the wag of his tail.**  
Josh Billings (Henry Wheeler Shaw)

# Cover story

This edition's cover was chosen from one of St John's School students' illustrations on the theme of *Summer*. The students' variety was wide and interesting. The choice was not easy because there were a number of good enterprising pictures with a real summer feeling. This particular illustration was unusual in that it was painted in colour on silk – not shown at its best in black and white. The artist, **Hebe Grout**, is aged 9, year 4. She is from a family of art and craft enthusiasts. Her subject also indicates her family's love of nature – they often visit nature reserves and study ladybirds and other insects. Even her forename is the name of a flowering shrub. Congratulations, Hebe – and your school friends who also did well!

## Letters to the Editor

### RED KITES v SMALL BIRDS

The other day Roger and I were walking though the Grubbins when we saw a truly memorable sight - 17 red kites circling over some delectable post Christmas offering in someone's garden.

While this was an amazing spectacle, it was one which I think is undesirable, not only for these lovely birds, but for the small animals and birds in the area. I don't know whether other people have noticed the lack of little birds in their gardens, but we certainly have lost at least 50% in the last ten years. It is not that the kites prey on them, they are primarily carrion eaters, but no little bird is going to hang around if it sees a raptor shape above it. The kites are not spreading over wide areas of the countryside as was planned at their reintroduction over 10 years ago, but are staying where food is offered.

This is really an appeal to the inhabitants of our two villages gradually to stop feeding them so that they can spread naturally across the countryside and give the smaller species a chance. We won't lose all the kites but it will mean a better distribution.

Ginnie Brudenell



Laughter is the shortest distance  
between two people  
Victor Borge

## FA CUP FAYRE AT ST JOHN'S SCHOOL Sat 19<sup>th</sup> May

12 noon – till after the final whistle!



Come and watch the FA Cup match  
on the special big screen in the school hall!

The FA Cup Fayre at St John's School in Lacey Green is guaranteed to be a fun filled afternoon, with plenty to keep young and old entertained. Organised by the Parents' Association at the school, this year's event has the FA Cup as its theme and the afternoon is packed with activities laid on for the football enthusiasts - as well as football phobics!

**Football fans** will be able to watch the build up and the FA Cup Final match on a huge screen in the school hall. There will also be a children's football tournament and 'Beat the Goalie' activities out on the school field.

**Entertainment** for those less interested in the 'beautiful game' will include the chance to get up close to many rare and exotic animals from Celebrity Animals. There's a chance to try out juggling, monocycle and stilt walking at Circus Skills workshops and the ever-popular face painting, coconut shy, tombola, a plant stall and, of course, a raffle. **Tea, home made cakes, a barbecue, licensed bar and Pimms tent** are on hand to refresh and revive.

Entertainment will include music and maypole dance performances by children at the school. In addition, you can see the results of the competition where children will turn a vegetable of their choice into a football player of their choice!

It's guaranteed to be a fun event and we are really looking forward to welcoming everyone from the village. Admission by 'lucky' programme costs just **£1 per family**. **All money raised will go towards providing extra facilities at the school.**

# On the Farm

I think it's about time I did a little update on how the weather is affecting the farm. Well, I know that you know how it has been here. It has been such a very mild winter that there are still masses of berries on the trees and shrubs, more than the birds could eat. The first five or six days of March were wetter than it usually is all month but there have been some lovely sunny days since. The hawthorn is already bursting into leaf, the blackthorn is in full flower and the hazel catkins are already going over. Yes, spring definitely came early. There is still time to get frost but it does tend to roll down into the valleys so although we have colder weather up on the top of the Chilterns, it's the valleys that usually get the late frosts. Obvious, if you know it, but a snippet of information if you don't. Did you notice the sheep rooting around for the turnips? Not our sheep, but in the field on the left as you go down Woodway. Also on the far bank as you go down through Bradenham. It looks primitive, but the sheep love snuffling them out and eating them.

We have just got back from our annual trip to visit a retired farmer at Okehampton in Devon. The day was bright and the countryside beautiful. We had travelled along the south coast from Chichester. There is certainly not the urgency to get things done further south. We have noticed it before. It's not that much further south than Bucks, but the winters are milder and shorter. There isn't the pressure to get the land work done in the autumn or as soon as possible in the spring. Up here time is of the essence. Cultivations for

the following year start as soon as the fields are cleared of the harvest.

Our farm has been feeling the effects of the weather last summer. It is our practice to make most of the fodder for the animals. Mostly in the form of silage, about 50% of maize, the rest of grass. We sometimes make a little hay. Last year the maize, planted in April just stayed cold and waterlogged throughout May and didn't grow. Then June, July and August were too dry and the crop was extremely short. The grass was cut late by which time it was past its best and not so nutritious. In mid-February calculations revealed that we were going to be very short of fodder to see us through to next season. The only solution was to change the ration which has to be done gradually. The cows are now very happily eating a mixture of cereals, brewers grains, after extracting the malt for beer, soya bean meal, rape seed meal, distillers grains, a by-product of making whisky and pressed apple pulp from Copella, no less, only the best. The cows love it but it comes at a cost. So much for the weather.

Now the hedges are coming out in leaf, have you noticed how much higher they are? This is the latest government directive regarding hedges which now states that they must be five feet high. We find journeys quite boring when there is no view to look at. And the roads in the West Country quite claustrophobic in places. We find it a pity when our country is so beautiful and we can't see it, but I suppose not everybody will think the same. Anyway that's how its got to be.

Joan West

## Village Notice Board

### Collecting annual donations to Hallmark in August

Our voluntary deliverers of Hallmark will be inviting you to make a donation with the next edition.

Most deliverers don't enjoy asking for money, so please surprise them by offering your donation before they get the chance to ask you! See if you can beat them to it!

**As a guide, printing and other expenses cost about £5 per annum per household**

# Happy Wanderers Walking Club

## ELLESBOROUGH & CHEQUERS

Sun 28<sup>th</sup> Jan

We had a bright and breezy January morning for 31 Happy Wanderers meeting at Butlers Cross for our usual end of month walk.

Mike and Maureen O'Neil were due to lead us on their walk, but unfortunately Mike was unwell. Nevertheless, Maureen was on parade and, aided by Thornley Bryant, we started promptly at 10.30am.

They led us round Ellesborough Church and Beacon Hill, where we stopped briefly to admire the distant views over the Vale of Aylesbury, then on through Aylesbury Warren to join the Ridgeway past Chequers, then on to Goodmerhill Wood parallel with the golf course, returning to the car park.

Another good walk with good company.



Ron Goodearl

## AGM and LOCAL WALK

Sun 25<sup>th</sup> Feb

At our AGM, a new Chairman and Secretary were elected by the 38 members present. Ronnie and Liz Lewin have taken up these appointments, with Ron Goodearl remaining as Treasurer. It has been my very great pleasure to act as Chairman of our friendly

walking club over the past 4 years with Ginnie as secretary. I wish Ronnie and Liz the best for the future

Apart from the enjoyment we all get from our exercise and appreciation of the Chiltern countryside, we also donate annually to the Thames Valley & Chiltern Air Ambulance Trust and the Chilterns Society, neither of whom receive any government assistance.

We were delighted to see our oldest member, Ken Templeman, at our AGM. He will not mind me saying that, at over 90, he is the best advert for the lifestyle of our club!

Our annual "weekend away" in September will be to Bewdley in Worcestershire and will be led by Liz Southon and Sue Phillips.

The Happy Wanderers was founded in April 1991 by Ted and Jean Janes with a few friends (including Bette and Norman Tyler) who enjoyed walking. It has thrived ever since and has grown to 57 members at the last count. New members are always welcome. We gather at different locations on the last Sunday of the month within approx 15 miles of the village, with a pub lunch after the walk for those so inclined. For those who prefer a shorter local walk of approximately 3 miles, mark up your diary to be at the Lacey Green Village Hall car park by 10.30am on the second Wednesday of the month – you will be most welcome

Roger Brudenell

## WENDOVER, GRAND UNION CANAL & HALTON

Sun 25<sup>th</sup> March

Twenty four of the Happy Wanderers met in Wendover for the regular Sunday walk at the end of the month.

From the central car park (free on Sundays) we walked through Wendover to the start of the Wendover arm of the Grand Union Canal, which we followed as far as Halton Church, along the old towpath. No sign today of the Kingfisher which we have seen on previous walks along the canal.

Soon after the churchyard, on our way through the grounds of Halton House, it became obvious we were on a similar route with a large meeting of horses and riders. We had to pause at this stage as a rider-less

horse was on the loose, but was soon caught up after a short gallop.



As our walk progressed, the sun came out to give us a perfect Spring morning.

We continued to be held up a little on occasions by the horses and riders coming in the opposite direction on the same path as we were following round the back of Halton Camp. Nevertheless, we made good time back to Wendover.

A very pleasant walk, thanks to Rita and Thornley

**Ron Goodearl**

## Loosley Row and Lacey Green WI

**2nd Thursdays 2.00pm Village Hall**

**D**o you remember February, when we woke up to snow in a raging blizzard? Well, that was the day of our meeting which we had to cancel. Our speaker phoned to say she couldn't get to us and, as quite a few of our members were also snow-bound, there was no alternative but to cancel. Fortunately, the snow disappeared as quickly as it came.

March is our birthday month and we celebrated 83 years of mutual enjoyment with the "Banjovi Revival", a group of four ladies, two playing the banjo, one on keyboard and the other singing. It was most entertaining and had us singing along with some of their numbers. Rosemary Mortham made us the most beautiful birthday cake, for which we thank her very much.



Our quiz team took part in one of the Bucks heats for the Inter County Quizz and I'm pleased to say we won, although it did seem rather hard this year. We now progress to the final between Herts, Beds and Bucks. Wish us luck.



**Photos by Jill Baker**

Kathleen Turner told us about her wonderful holiday in Canada, which she took last year. She travelled from the east to the west coast and then cruised up to Alaska. It was truly a holiday of a lifetime and Kath told us of the wonderful sights and experiences that she and her husband experienced, as well as some very funny events.

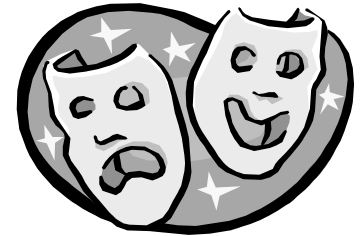
I do hope that you are all enjoying this Spring weather. Perhaps it will tempt you out to one of our meetings one day.

**Doreen de Grey**



A smile can add a great deal to one's face value.

# Lacey Green Productions together with The Command Performers



## MONSTROUS PERFORMANCES = A MONSTROUS TOTAL

**Q**uestion: what have an unseen monstrous dragon, the brutal realities of political torture, two unsavoury bag-ladies and the lighter side of industrial unrest got to do with the worldwide fight to uphold human rights? Answer: the latest successful *Theatre in the Home* performance by Lacey Green Productions, together with The Command Performers.

Entitled, *Is it a Joke, or Serious?*, the production was run over three performances on the weekend 2<sup>nd</sup>-4<sup>th</sup> February at Chipko, home to Andrew and Ann Noel Clark. The performances were free of charge, as the intention was to raise money for Amnesty International, an organisation which Andrew has been involved with for some time now.

Not many folk would be brave enough to open their doors to the assorted gang of players who formed the cast for the series of plays that made up the show, let alone be prepared to have their home converted into a miniature theatre. Many thanks to the Clarks for their generous hospitality, and for supplying two of the female members of the cast, as both Ann Noel and daughter Zettie were roped-in to tread the boards.

Monsters, many of them human, featured heavily in the sketches and short plays – some of them leavened by a good dose of humour and silliness, others not so to deliberately shocking effect. There were some sights for sore eyes too, not least Ann Noel's housemaid's overall and turban, Peter Brookhouse parading in the planet's most hideous waistcoat, and the unsuccessful introduction of the tea cosy as an item of fashion head wear...

Lacey Green Productions stalwart Brian Panter put in what he claims will be his last performance (again!), but we suspect that the right role might tempt him to face the limelight again.

Those who attended the Saturday performance were given an outdoor encore, courtesy of the eclipsed moon, clearly visible above the Bucks tree line.

Each audience had the dubious post-show experience of mixing with the cast and crew, an encounter perhaps eased by the availability of wine and nibbles.

The event exceeded our expectations when a grand sum of bang-on £800 was collected for Amnesty's important work in championing the victims of oppression across the globe.



**Cast members cheer their backstage boys**

## DINNER THEATRE 2007

We used to produce a musical show every other year but haven't done so for a while. Well now - as there's been a bit of a call for one lately - we are responding in positive fashion. We are currently investigating performing *Oh, What a Lovely War* – Joan Greenwood's acclaimed musical that takes a wry view of the events of the First World War. This will be the first time that we have combined one of Rachel's famous feasts with a musical, so this really will be a special treat. If you would like to be involved, in whatever capacity, whether as performer, backstage Trojan or audience member, contact Valerie Brookhouse (number below) to register your interest.

The dates for this year's performances at the Millennium Hall are November 23<sup>rd</sup> and 24<sup>th</sup> – and we know that we've said it before, but they will soon come around! Please telephone **01844 344207**, or email [valbrookhouse@btinternet.com](mailto:valbrookhouse@btinternet.com)

**Ian Gillett**



A good way to forget your troubles  
is to help others out of theirs

# Around Our Local Pubs



Spring is now on us and the weather is warming up. Let's hope this will continue so we have a hot summer so the garden gets good use. The children can play in our play area while Mums and Dads have a drink. As from the first of July, all public houses will go no smoking. This will be

a good thing for all the people who like to drink out in clean air and for the smokers we will have a little room 'shed' outside for them, with heaters and tables etc. So hopefully everybody will be happy. We now also have heaters in the garden, so you can sit out there later on in the evening.

As from May 1<sup>st</sup>, we will be open all day on a Friday, so this means Fridays, Saturdays and Sundays we will be open all day and we open all day Bank Holidays. Even though we close normally on a Monday, Bank Holidays we open all day and do food lunchtimes.

Aunt Sally season has just started, so good luck to the Black Horse team for the Summer League. Well done to our bar billiards team for coming top of their division. Ian Saxton, Giles Fallon, Mark Carter, Ian Thorne, Jack Hedgland, Pat Smith and, of course, the captain Ian Wilson (chef). Thanks to both domino and crib players in the A and B teams for all their support to the Black Horse during the winter months. See you all next season.

After reading the last Hallmark, it all seemed to be about what the village was once like or about the Methodist Chapel. I have lived in the Black Horse for twelve years and have seen the village change, but everything changes – life doesn't stand still. I just wish people don't try to change things that have been something for years. The Methodist Church having a shop. Who will use it? The odd person who has forgotten to buy something at Tesco's or something you have run out of. This does not keep a shop going. You need to make a profit. We had a good shop before but even they couldn't keep it going and they tried so hard. I know. I have been in the same situation – Save the Pub campaign. Who are these people that start and put their names on these things?

We are now doing a new ale, Jennings Cumberland, so

that makes our real ales to four. Come in and try them. Also, we now have a very good fish menu, from lemon sole to trout etc. Hope you all have a very good summer. From Lynne and staff.

**Lynne Comley**

## Culverton Crossroads

Councillor Paul Rogerson has passed to me Buckinghamshire County Council emails informing us of current plans. Parish Councillor Peter Pilkington has updated me and the latest as at 27<sup>th</sup> April, edited from Bucks CC wording, is as follows.

Bucks CC has completed the acquisition of the land associated with the realignment of the junction with the A4010 at Culverton crossroads. Works on the scheme is planned to start late June/early July.

Whilst the works are carried out, Upper Icknield Way will be closed from A4010 to Shootacre Lane. Alternative route southeast on Shootacre Lane then north bound on the A4010 and vice versa. There will be temporary traffic lights on the A4010 during off peak periods between 0930 and 1630. These works will involve the removal of hedges, fencing, gates and two trees. The fencing and gates will be replaced. An ecologist will be sent out to investigate whether there are any signs of bird nesting prior to the commencement of any work. The major civil works will last approx 8 weeks.

Road closure and speed restrictions for the A4010, Upper Icknield Way, Woodway and Princes Risborough will be in force for about 3 months as follows:

30mph restriction on A4010 from existing 30mph limit south of Princes Risborough to 120 metres south from its junction with Shootacre Lane.

Diversion route for Woodway, Princes Risborough for about 20 days and is only relevant to the Woodway works. It will only be in place between 2300 and 0600. The diversion will not now be via Little Lane as this is considered unsuitable for heavy vehicles.

For further detail, contact Ian Reed, Senior Area Coordinator on 01494 475378 or email [ireed@buckscc.gov.uk](mailto:ireed@buckscc.gov.uk).

## Parslow Hillock's new road sign

The road sign just past the *Pink & Lily* has an interesting and unusual story behind it.

Parslow Hillock residents, between them, have taken pride in caring for it and its surroundings for years.

The Creak family at the nearby White House, including Jane, her daughter Elizabeth and husband Michael (who died 6½ years ago), have been caring for the sign since it was knocked down by a car in 1984. They have repaired and repainted it every 5 to 7 years since then.



**Father and daughter repairing it in March 1990**

Initially, a policeman told them they may be defacing Council property. Jane Creak remembers that in due course they received a letter from the Wycombe District Council saying, in effect, it was allowable in their case and under the circumstances.

The family also planted the daffodils and mows the surrounding grass weekly in season. The post-box, in daily use, has been touched up by Di Paul, another longstanding Parslows Hillock resident.

About 15 years ago, the sign was knocked over by a car and 10 years ago the "Lily Bottom only" arm of the sign was wrenched off ("by a lout", a neighbour described) and stolen. As a result, replacement letters on that arm had to be in plastic, whereas the others are still in cast aluminium alloy.

Apparently, the land belongs, not to a Council, but to Risborough Charities and was rented to local residents.

In 2007, the Creak family provided today's new post and Geoff Baker (of Gomme's Forge) arranged for

Gerry Hayes to make the new signs to be fixed to the post, as shown in the latest photo. Gerry did all the hard work, Geoff said repeatedly. Gerry's speciality is woodwork and cabinet making. The arms carrying the letters screwed to them are of Canadian pine. The letters themselves were stripped of paint and cleaned by Geoff, then re-screwed in by Gerry.



**The state of the signs after being blown over early in 2007**



**Today's completely new road sign**

Between them all, they must have saved the Council a lot of money over the years, whilst being able to look with joint neighbourly satisfaction at their nearby feature!



# Maize or Maze.... ?

## THE BACKGROUND TO THIS FEATURE OF OUR VILLAGE

Feeding 300 Dairy Cows who live inside all Winter takes some doing! Each year, Richard and John West at Stocken Farm grow around 120 acres of maize, which is foraged, chopped and stored in large clamps for the cows to munch their way through. This foraged maize will provide 50% of the diet for a dairy cow during the winter. So, sorry, it is a fact that the maize which is grown at Stocken Farm is not solely for the enjoyment of visitors to Lacey Green Maize Maze each summer!

Clearly dual use is a good thing, and the annual cycle means that each year we have the opportunity to create a new maze, and a brand new challenge for visitors.

It all starts around Easter time; as you tuck into your Easter Eggs, the farm is busy preparing the ground and planting the maize seeds. To make the maize crop more dense, and therefore better for the maze puzzle, the field at Slad Lane is drilled (or planted) twice – once in each direction. 60,000 seeds per acre are planted. The whole process takes around 4 hours. We are often asked the question “Do you plant the maize by hand?” – Clearly the answer is “No” – can you imagine how long that would take! Marking out the maze itself takes ages ..... but I am coming to that part.



With the plants starting to grow, it is time to put the maze design into action. Each year an A4 piece of paper, covered with a 1cm square grid, is used to scale the design up to fill the field. 1cm square on the paper = 10m square on the ground. Firstly, using orange coloured bale twine, we peg out the grid 10m square all over the field. Then, using the plan, pegs and blue bale twine, we mark out the paths. Once we have all the paths marked, we then hoe out and remove any plants growing along the blue string lines. Sounds simple, which in essence it is. However, it takes hours and much head scratching – standing in a muddy field, often windy and wet, we have found ourselves questioning our sanity!



As you can imagine, it is a special moment when we get to see the aerial photos. The giant design each year does seem to attract light aircraft and helicopters each summer.

The farm cares for the crop throughout the year; the speed it grows is quite spectacular. From a seed at Easter to a target height over seven feet by September is pretty amazing. Maize plants do like warm conditions and water, particularly up to July. We will be opening as soon as the school is on Summer Holiday, by which time the maize is normally between four and five feet. Last year's heat wave in June certainly was not ideal – but that is part of the daily challenge of farming.

2007 will be the fifth year, and therefore fifth design. We are not ready to reveal the theme just yet, but we have plans for 2007 to be the “Most Challenging Maze Yet”.

If you would like more information 'phone 01844 275591 or visit [www.laceygreenmaze.co.uk](http://www.laceygreenmaze.co.uk)

**Caroline Egerton**

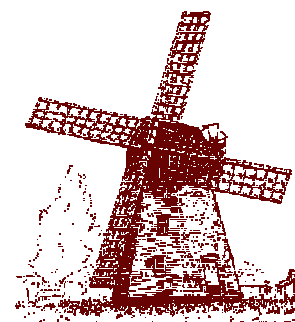
# The Windmill WI

Our first meeting for 2007 was in February, when our speaker was Jim Dale talking about the 'Impact of the Weather'. Jim is founder and owner of The British Weather Services, an independent weather provider based in Hazlemere. We all came away from the meeting understanding how much the weather affects our lives.

In March, through our speaker Louise Reed, we 'met' Mary Kingsley, the 19<sup>th</sup> century African Explorer. Louise, dressed in costume, took on the role of Mary Kingsley and told us of her many exciting experiences whilst travelling in Africa.

We were delighted that our spring jumble sale was a great success, making a profit of just over £500! We would like to say a big thank you to everyone who supported us by bringing jumble or by coming to buy and especially to all our members who helped on the day.

Several members attended the Disraeli Group Meeting held at Sands Village Hall. The speaker was Mr Sirot Smith from Sulgrave Manor, talking about The Tudor Lifestyle



At our April meeting our speaker, Sally Ann Taylor, gave members a talk on looking after our skin and applying make-up. Sally gave two of our members (and a member's daughter) a makeover – it was a pity they were going home afterwards and not going on a night out!

We have some interesting talks lined up for the summer months, including 'An Introduction to Line Dancing', 'A Girls Best Friend' by the jeweller, Christopher Clarke and a talk on The Ridgeway by John Tyler – if any of these subjects interest you, please come and join us – the Millennium Village Hall at 7.45 on the first Wednesday in the month.

**Daphne Williams**

## Environment Centre

The Centre, on Holywell Mead near the centre of High Wycombe, now has a part-time outreach Energy Conservation Worker, Shafiq Siddiq, BSc.

His task is to help people cut their energy bills! In doing so, he will be helping to cut the amount of power needed and so assist in the fight against global warming. He is available to talk to groups and individuals about their home heating problems, covering topics such as loft insulation, cavity wall insulation, draught-proofing, water tank insulation and condensing boilers

He will also give information on how to save electricity & gas, finding the cheapest tariffs and available grants.

For further information, please contact The Environment Centre on 01494 511585 or email [manager@ecobuzz.org.uk](mailto:manager@ecobuzz.org.uk) or call Shafiq directly on 07946 007981



Chocolate shrinks my clothes  
Jill Cuthbert

# Windmill Under 5s



Looking back over our last term, we have been extremely busy. The Indoor Car Boot Sale raised £417 towards our new play area, which is now built and in use - yippee! The children have been involved in several events and making things for: Chinese New Year, Mothers Day, Red Nose Day, and of course Easter. They have explored lots of new ideas, celebrated and produced cards, gifts and lots of edibles along the way inc. pizzas, Easter bird's nests (inc. chocolate eggs), decorated biscuits as well as all the creative pictures etc we also receive home.

We raised some money by selling our flapjacks with their very own cherry red noses for Comic Relief and the children and staff all wore red that Friday to match their red noses. The last day of term was our Easter Fun Day, when the children sang and paraded their fantastic Easter Bonnets for all their families and friends, followed by a "match the egg" hunt and then a party afterwards. Needless to say great fun was had by all.

As already mentioned, our new all weather play surface is now in use and much christened with chalking, painting, whizzing around in cars, on scooters, bikes, pushing other wheeled vehicles and finally playing many new ball games. It's a great addition to our bright and cheerful barked area and gives the children

another medium to enjoy - even when wet. Rachel intends to get gardening with the children in the new term and some bright and blooming pots will be making an appearance very soon.

This last term has seen lots of new starters and Rachel and her team have been busy putting all their time and energy into providing the best start in life for all the children in their care. We are now almost full and even have a waiting list for some days, so if you're hoping to send your little one to our great Pre-School please put their name on the list now, by calling Rachel Manning on 07821 554343

We are now looking forward to our Summer Term with our family BBQ event, Sports Day and hopefully lots of good weather for the children to enjoy. Windmills will have their own small area at the St John's May Fayre on Saturday 19<sup>th</sup> May so why not pop along and meet the gang. We also have an Open Day on Thurs 10<sup>th</sup> May where you and your child can join us to see just what Windmills has to offer! You can also find out more about us on our website: [www.windmillunder5s.co.uk](http://www.windmillunder5s.co.uk)

**Tina Zychowicz (chair)**

---

## Loosley Row and Lacey Green Horticultural Society

### OVER THE GARDEN FENCE

#### LACEY GREEN FLOWER SHOW – THREE MEN KILLED BY LIGHTENING STRIKE

The date was 27 July, 1891. The men died when the Cherry tree under which they were sheltering was struck by lightning. One of the victims was Mr John Eggleton, whose children attended the Village School.

I read of this tragedy in the St John's School log, reproduced by Joan West in her history of the School from 1850 to 1930, published in 2000 and titled "A Chiltern Village School".

On a more cheerful note, the log records that the children, on an organized blackberrying expedition, collected 162 pounds of blackberries in two days in October 1917.

This year's Show will be on Saturday 8 September. Schedules accompany this magazine. Remember there is a trophy for the best entrant who has not won before. We are hoping for a bumper entry, and no thunderstorms.

Before then, we have the eagerly awaited talk on *Red Kites in the Chilterns* by Jill Carey on Wednesday 16 May at 8.00pm in the Village Hall. We will be distributing pumpkin seedlings for the annual competition at the meeting.

On Saturday 19 May, we are assisting the School with a plant stall at their Spring Fayre. Please bring along any spare plants. We are setting up from 11.00am at the School - and stay to help for an hour, if you can.

The following Wednesday, 23 May, we have arranged to visit Mr Victor Scott's garden at Aston Abbotts. Meet there at 6.30pm or soon after. Aston Abbotts is about 15 miles away, no great distance, on the Leighton Buzzard road. Detailed directions will be available at our May meeting, or phone me.

The next event will be the Compost Making demonstration on Wednesday 13 June at 6.30pm in my garden at *The Old School House*, Pink Road. We have two Master Composters coming - there really is such a thing! - and they assure me that they will keep us interested for about 90 minutes. Do come and see for yourself, we will be offering a glass of wine or fruit juice, and nibbles. For that reason we need to know how

many are coming, so please let me know at least a day or two in advance.

On Wednesday 18 July at 8.00pm, we have a talk entitled *Flora and Floriade* by Gwen Barton.

We held the AGM on 21 March. The Committee were re-elected, strengthened by the addition of Chris Boll and Adam Heeley, taking over as Show Secretary from Dave Fitt, who has staged 3 excellent Shows and continues on the Committee "without portfolio". This was followed by a super talk by John Tyler on the Ridgeway. The 58 members present enjoyed a glass of Berkshire wine called *The Ridgeway* and Spenwood cheese, also from Berkshire.

As always, non-members are welcome to our events, just come along and pay £2 on the door to join the Society, thereafter there is generally no further charge. If you are a member, try to bring a guest.

**Terry Fendom, Chairman. 01844 342636**

---

## Lacey Green & Loosley Row Sports & Social Club

### Cricket Section

Is it raining?

I ask because as I write this we are in the middle of a lovely spell of fine warm weather but, we all know what happens as soon as cricket starts, don't we? Anyhow, fingers crossed, we are hoping for the best and let's hope we have a great summer and our two teams play to their full potential and give us plenty to cheer about.

Incidentally, while we are on the subject of the weather, can someone explain to me why, if global warming is a fact (as some claim) our sports-ground even on the sunniest of summer evenings has us glad to don cardigans, pullovers or coats to keep out the chill? Global warming? Feels like a new ice-age to me!

But, to cricket. As mentioned in the last issue, our 1st XI have dropped from the Premiership into the 1st Division. Let's hope that they can pull together and play as well as we spectators think they can. I understand that they will have had three practice sessions in the R.G.S. nets and they have a K.O. Cup appointment at Aston Clinton on the 29th of April. So let's hope that will give them a good start to the league programme the following week.

The 2nd XI remain in Division Two. I hope the younger players will be given the chance to play regularly. If they are not we may be saying 'Goodbye' to them (and

eventually, our 1st XI). I've seen it happen too many times.

I was sounding full of hope until that last bit, wasn't I? But I often think back to the teams (sadly mostly gone now) that used to be in the 1st Division with their Reserve sides in the 5th - teams like Booker, West Indians, Caribbeans, Wheeler End, Naphill, Radnage, Tylers Green - all highly competitive teams with really good players. What caused them to collapse? There are probably many reasons but I do firmly believe that unless we encourage any youngster in or near this village to play we may one day go the same way.

We have a beautiful sports ground with excellent facilities and it would be a terrible shame (to me a tragedy; what would I do on Saturday afternoons?) if it became wasteland covered in knee-high grass and thistles or a factory site. Over many years a great number of people have spent thousands of hours working to make it what it is today. At Easter a group of the lads were there mowing, seeding, rolling and generally tidying up to make it an area of which the village should be proud. It's difficult to understand why more people don't take an interest and use the ground much more. Perhaps the play-school and St John's children will grow up appreciating what an asset they have on their doorstep.

**Continued on page 25 ...**

# Gomme's Forge

## A TRADITIONAL TREASURE IN OUR OWN VILLAGE



Gomme's Forge is to be found tucked away in Foundry Lane, Loosley Row. It is one of the longest established businesses in the district, although early records have been lost in the mists of time. However, it is known to have been in operation at least as early as the mid 19th century, when John Gomme was the proprietor.



At that time about sixteen persons were employed, including smiths, farriers, iron founders, pattern makers, carpenters, wheelwrights and even a millwright.

Much work was obtained from the local agricultural industry for horse-drawn machinery and later the maintenance of stream traction engines. As the needs of the farming industry slowly began to decline, attention was turned to the manufacture of early band saws. Supply of castings for heating stoves was also undertaken. Both these items were for the furniture factories of High Wycombe, the latter for space heating and kiln drying.



With ever-changing times and customer requirements, Gomme's Forge today specializes in aluminium casting and wrought iron work. In the Showroom are product examples including fire baskets, dog irons, lanterns, fire canopies, fire screens, gates, spark guards, house name signs, fencing, wall lights and curtain rails.



Attractively displayed in the Loosley Row showroom are a variety of wrought iron items produced in the Forge. These include fire baskets, canopies, screens, spark guards and curtain rails.



Gomme's Forge offers a unique 'one off' service to prospective clients.

The present proprietors are direct descendants of the original founders, the Forge being handed down to succeeding generations.



Graham Baker, the eldest son of Mrs Constance Baker, nee Gomme, and the late Mr. Frederick Baker.



◀ Geoffrey Baker, Graham's younger brother.

Graham and Geoffrey's married sister, Jenny, administers the office and showroom.



Jeremy Baker, Graham's son, who specializes in wrought iron work



These two 'workers' casting, illustrate the heritage and skill fostered by this family-run village industry, extending from the distant past to the present day.

About once a fortnight, a day is set aside when aluminium casting takes place. Amongst the items produced are dog irons, wall lights, house nameplates and house numbers.

Much care is taken in preparing the mounding boxes, which are filled with special sand. The impression of the required article is then made in the sand. ▶



The moulds having been successfully completed, the boxes are clamped together, numbered and marked up according to the content, in readiness for casting.

The oil-fired furnace is started up, bringing the aluminium to the correct temperature, to be gently ladled into the moulds.

With larger moulds, a full crucible has to be lifted from the furnace...



....and the molten liquid poured into the moulds by hand - a two-man job!

Once the aluminium has been given sufficient time to cool and set, the moulds are 'knocked out', revealing the various components.

**Continued overleaf**

**23**



The completed article – a lamp bracket

In the summer of 2002 a need arose to replace the bus shelters adjacent to 'The Whip' and St. John's School, in Main Road, Lacey Green. Lacey Green Parish Council commissioned Gomme's Forge to design and construct the shelters.

It was suggested the shelters should commemorate the Golden Jubilee of Her Majesty, Queen Elizabeth and a plaque was attached to each inscribed "1952 Golden Jubilee 2002".



The basic structure of the new bus shelters was prepared in the Forge yard, with a touch of paint and some final adjustments. Once completed the shelters were hoisted on to the firm's truck. The first shelter was positioned next to 'The Whip' public house and the second delivered to the site adjacent to St John's School.

It is hoped both these shelters will provide the passengers of Lacey Green and Loosley Row with protection from wind and weather for many years to come.

Geoff is seen here 'setting out' the metalwork for a seat to encompass the circumference of a tree trunk. ►



Other work is undertaken for the National Trust and Buckinghamshire County Council. The County's 'Best Kept Village' signs are produced here.



One of three commemorative seats made at Gomme's Forge and positioned around Lacey Green and Loosley Row in May 1997. .

Our village's forge also supplies wrought iron gates designed and made to order, elegant balconies, distinctive banisters, fire screens, signs in different designs, decorative fire backs, canopies and baskets, irons for the fire, seats for the garden, wine racks, curtain rails with a choice of ends and hanging brackets, numbers signs and nameplates. Examples of most can be seen in their showroom.



Continued from page 21

I'm told that Robert Dell, Esq will again, captain the 1st XI with Mr Duncan Palmer as his deputy while our veteran (I shall be in trouble) Mr Dave Sanders will hope to keep the 2nd's under control.

I have purchased two figurines approximately 12 inches - I have no truck with metric - high of batsmen in stroke-playing attitude that I would like to give to the club to be presented to the best batsman in each team at the end of the season. They are not gold, silver or even bronze but if the club will accept them they could add an incentive to do well.

And I have not forgotten the bowlers. Having had a bit of luck with the Premium Bonds (No not a million, nowhere near) I am prepared to put up £50 (fifty pounds) to a bowler in either team who can take fifty wickets in league matches this year. That's roughly three wickets per match. In my opinion that should be an easy target. It used to be done frequently years ago - and against tough opponents. So, I shall be interested to see if any of our modern bowlers can pick up an easy? fifty quid.

Whatever, let's look forward to a good cricketing summer with good batting, bowling and fielding and blue skies above.

Geoff Gomme

## FORTHCOMING EVENT

✻ holistic therapies ✻

I'm offering 15 minute taster sessions of...

Reflexology Reiki

Indian head massage

☆For just £6.00 each treatment☆



☆Village hall ☆Lacey Green☆

☆Small meeting room☆

(excluding half terms) from 17<sup>th</sup> April

Tuesday mornings 10 - 1pm

Just turn up - no need to book!

For more info on this & further appointments  
please contact:

Debbie Arthurs mobile therapist VTCT

M.I.C.H.T

Home 01494 437630 ☆Mobile 07971 156053

Email [debbiearthurs@talktalk.net](mailto:debbiearthurs@talktalk.net)

## A moving display for Emily Johnson



Soon after Easter Monday 9<sup>th</sup> April, you couldn't help noticing a touching display of bouquets on the right hand side of New Road just past Slad Lane when leaving Lacey Green towards Naphill. They were mainly from people in their teens and twenties. There were moving hand-written messages and other tributes,

including a teddy bear and a photo of Emily, aged 18. The number of bouquets grew to 69 at the last count, by which time there was also a bed of pansies spelling her name, "EMILY".

Emily was driving a Vauxhall Corsa towards Naphill when she was involved in a car crash there around 10am on 9<sup>th</sup> April. A dark blue Ford Focus was travelling from Walters Ash when it collided with the Corsa, then with a black Audi A4. Emma suffered serious injuries and was taken to Stoke Mandeville Hospital for emergency treatment, but later died.

Emma was born in Naphill and her family have always lived there, apparently.

When I visited the police website, [www.thamesvalley.police.uk](http://www.thamesvalley.police.uk), on 26 April they were still appealing for witnesses or anyone with information to contact PC James Hoskin at Amersham Police Station via 0845 8 505 505. If you don't want to talk to the police or give your name, they suggest you call the Crimestoppers charity on 0800 555 111. The police article had been read 1,242 times by the time I went to their website.

## Risborough Lacemakers Lace & Craft Day

AT OUR VILLAGE HALL SAT 31<sup>st</sup> MARCH

The Village Hall was a hive of activity when the Risborough Lacemakers held their second Lace and Craft day in Lacey Green.

About 90 lacemakers spent the day making lace, purchasing equipment and having a mutual exchange of ideas. There was a small exhibition of lace and craft equipment, which was of great interest. Also present were three traders, each with a good selection of lace and craft equipment.

A letter received since summed the day up. I quote "A super Lace day – the suppliers had so many tempting things that we ran out of money – would you please send us two tickets for 2008"! As well as enjoying the day, £300 was raised by a raffle and guessing the name of a teddy air ambulance pilot, which is being donated to the Thames Valley & Chiltern Air Ambulance Trust.

Next year's Lace and Craft Day is planned for Saturday 29th March.

Jill Baker



Nothing is so upsetting to a person as to have company drop in to see the house looking as it usually does.

# Financial Planning

Recently in the press there have been articles proclaiming we no longer live in a free country, our rights are being taken away and we are heading towards a communist state. What's all the fuss about?

Well, apparently in Britain there are about 690,000 empty houses and the government wants to bring them back into use. On the face of it, there may be nothing wrong with re-filling empty houses – anything to ease the housing problem, but something is not quite right.

The department for the appointed secretary of state outlined details that allow local authorities to seize houses lying empty. Seizing empty houses? Surely not in the UK?

Well, under the rules which have now come into force, councils have the power to issue Empty Dwelling Management Orders (EDMOS) and take control of properties unoccupied for more than 6 months. The legislation technically allows a council to break into a property, refurbish it where necessary and then let the space to tenants of their choice for up to .....7 years!

So, supposing there has been the death of an elderly relative and you are in the process of dividing up the estate. It might be wise to speed things up, otherwise the property could soon be occupied by a stranger.

Or, if again a relative has died and you decide to wait until, in your opinion, there is an upturn in the the housing market. Perhaps not to wait too long.

These may be extreme examples and, in fairness, the government realised there are thousands of abandoned homes in private ownership across the UK which should be upgraded and brought back into use. Sure, when buildings are derelict they look unsightly and can change local house prices for the rest of the community. Also, empty second and holiday homes are exempt, together with the houses of those people who work away from home.

However, it is alarming that the former homes of a recently deceased relative could be seized.

A local authority must get permission from the owner before it can let the property, but if permission is refused, then the local authority can make a final EDMO. If the local authority cannot track down the owner, they can seize the property.

The trouble is that it is all rather vague and open to misinterpretation and I would have thought that existing

local authority properties should be looked at first where there is a need to refurbish.

Are some parts of the press, depending which newspaper you read, just getting excited and exaggerating the situation? Could a local authority actually carry out what, by the looks of things, it can legally do?

For more information you may like to visit [www.emptyhomes.com](http://www.emptyhomes.com) and [www.communities.gov.uk](http://www.communities.gov.uk)

**Steve Wilkinson**

## More Memories from My Girlhood

by CON BAKER – the oldest person in our village

1930?

GHOSTS ??



A long time ago, before poultry packers and Christmas meats, there was a gate and stile leading across fields to the main road. One evening, my boyfriend and I were sitting on the stile (moon light, of course) when, all of a sudden, this tall lady in grey appeared. We were a bit scared and hurried to my home, just across the road. At first I thought it was my mother spying on me, but no way could she have got indoors playing cards with my Dad. As it was just across the road from my house. So where was this lady in grey going at that time of night? The gate and stile long gone, but footpath still there, used by walkers. So maybe the lady in grey still glides by. I have never seen her again but here's no stile to sit on, and no boyfriend!!

Ghosts??



**General election** - when you have a chance to choose the lesser of evils

A wise man makes his own decisions; an ignorant man follows public opinion

# Obituaries

## WILFRED GEORGE SAUNDERS 1920 – 2007



**W**ilf was born in 1920 in North Holmwood Surrey; and lived in nearby Brockham, where he was to remain until he married. From an early age it became

clear that he was destined to become a farmer.

He was educated at the Dorking High School for boys and later at the Dorking Grammar school. He was an excellent athlete and won the junior and senior annual school cross country two years in succession. He also played football and cricket for the school first elevens and, on leaving, continued his love of sport with the Brockham first elevens for many years.

Being a farmer during the war, he was directed to continue his profession rather than military service. He worked long hours with little or no help as labour was very short in those dark days. However, as a civilian during the war, all men had to do voluntary civil defence duties after their working day. Wilf therefore joined the local Heavy Rescue Team, who went on duty from 6pm to 6am. It was reported that during the height of the blitz he was on duty for 75 consecutive nights without a break.

Although little or no male assistance was available on the farm during the war years, help came in the form of the women's land army. It was from this capable team that Wilf met, fell in love and eventually married Irene on the 7<sup>th</sup> December of 1946. Wilf proved to be a very loyal family man and this was borne out when, just two months before he died, family and friends assembled to celebrate their 60 years of marriage.

Wilf worked hard all his life to raise and support his wife and 3 sons. He spent long hours at work on the farm and it was not unusual in the summer for him to be up at 4am to milk the cows and finally come home in the dark, having spent the last few hours bringing in the harvest.. Incredibly, he found time to work in his beloved garden producing vegetables that are legendary. Ask anyone about his celery, potatoes or runner beans.

Wilf was a talented woodworker and made much of the

furniture in the family home. In the garden of his boyhood home stood a miniature house, which in fact was a bee hive built by his father. He rescued and restored the little house and it sat for many years in the garden of his house in Kiln Lane

In 1965, Wilf secured a job at Stocken Farm, when he and the family moved to Lacey Green. He was clearly content and remained there until he retired in 1984. He was a very quiet, reserved man in many ways but was always ready to help. In Lacey Green he served the community in a number of ways including sitting on the village hall committee, helping Rene to look after the Hall and he introduced to Lacey Green youth club the Brockham style bonfire night celebrations. He spent hours making torches, travelling all over with the tractor and trailer, collecting stuff for the bonfire and generally ensuring a huge and legendary success. In 1977, the year of the Queens Jubilee celebrations, Wilf organised the most fantastic pig roast.

In 1984 he retired a year or so early, when he and Rene moved to Goring by Sea, having renovated and extended a bungalow. The years of working in the bitterly cold winters when working conditions were not as they are now finally took its toll. Wilf must have enjoyed his years in Goring, where he went back to playing snooker and badminton.

Wilf remained an ardent sports fan all his life and was an avid Arsenal supporter. In recent years he could be found watching England playing cricket, although, for some reason, he preferred to watch them bat rather than bowl.

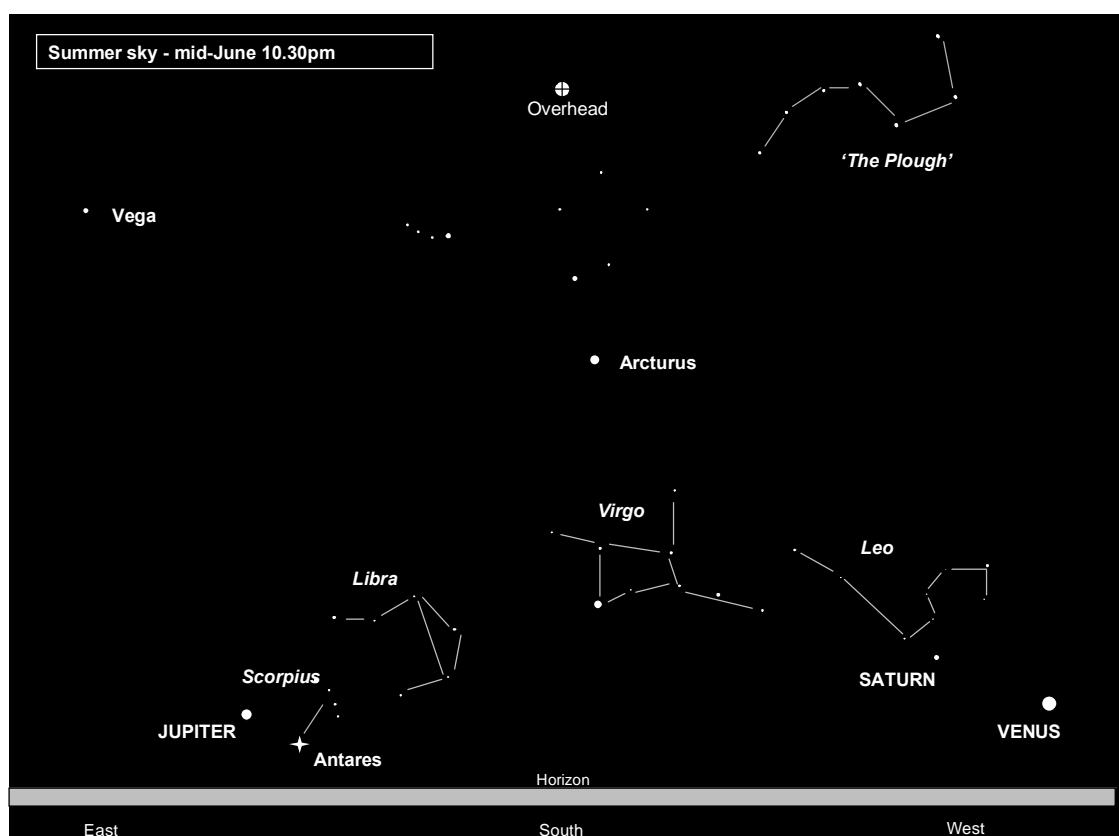
Wilf is survived by Rene his wife and 3 sons.



---

The first law of journalism states  
"First simplify, then exaggerate"  
John Humphrys, quoted in The Spectator

# Heavenly Bodies – Summer 2007



Summer is the season for the Zodiac constellations Leo, Virgo, Libra, Scorpius and Sagittarius, while three of our brighter planets line up to be on view simultaneously

The King of Planets, Jupiter, graces our skies after coming around from the other side of the Sun, while Saturn and its rings say a

long goodbye after shining brightly throughout the spring. Venus blazes like a torch in the heavens as the so-called 'Evening Star'

Giant Jupiter would fit 1,500 Earths inside it, and its powerful gravity has saved us many times from collisions with asteroids and comets, drawing them in like a vacuum cleaner. If you want to look at the planet to say 'thanks', it's low in the southern sky near the bright orange star Antares in the constellation of Scorpius.

Across the other side of the horizon where the Sun has set, Venus gleams brighter than everything else in the night sky, apart from the Moon. Earth's 'Evil Sister' dazzles like an aircraft's landing lights as the Sun's light is reflected off the planet's white, sulphuric cloud tops. Many people have reported seeing a UFO, when in fact they've seen Venus.

As mentioned in the spring issue of Hallmark, Saturn currently lurks at Leo's feet. This summer, Venus will appear about the width of two outstretched hands to the right of Saturn in May, moving towards the ringed planet as the weeks go by, until it ends up to the left of Saturn in July. This is due to Venus being much closer to Earth and having a much shorter orbit, so Venus moves relatively quickly across our sky.

The best months to view all three planets at a reasonable time are in June (10pm-11pm); and July (9.30pm-10pm). When you look at them, it's worth remembering that Saturn is more than 1 billion miles away, Jupiter is about half a billion miles from us, and Venus just 39 million miles.

Near Jupiter is the flaming orange-red star Antares. Its name means 'rival to Mars' as its colour and brightness look similar to the Red Planet from Earth. Antares is a red supergiant star, 300 times wider than our Sun, and is now an old-aged star approaching the end of its life. Despite being 3,600 trillion miles (600 light years) from us, it makes a stunning sight with the near-centre of our Milky Way galaxy providing a beautiful backdrop when looked at through binoculars.

Chris Dignan



# News from St John's Church

(Rector – the Reverend Denise Critchell)

Serving the village communities of Lacey Green, Loosley Row, and Speen.

The Easter Celebrations at St. John's Church began with the children from Speen and St. John's schools going to church for their end of term assemblies. Every child was given a palm cross which was blessed. Speen school performed dramatic readings telling the story of Palm Sunday and St. John's heard about Jesus' triumphant entry into Jerusalem riding on a donkey. The followers of Jesus had strewn his pathway with leaves from the palm trees and shouted "Hosanna in the highest". Later sadly to turn to shouts of "Crucify Him". Rev Denise explained that we have to go through the pain of the cross before we can see the upliftment of the Resurrection on Easter Sunday.

The children enjoyed their service, sang beautifully, and enthusiastically waved their crosses. Mr. Paul de Wolf (Headteacher) presented a cheque for £368.02 to Ken and June Brazier, to be forwarded to Mercy Ships. The children raised the money having a mufti day and hot dog stand!

Palm Sunday was celebrated with all receiving palm crosses at Family Communion. This was followed immediately by the AGM of the PCC, where Rev Denise gave a very interesting report of Church activities and thanked all those concerned who had been supportive and helpful during the year. Some church members had specific tasks and some gave help willingly as the need arose. Most thrilling are the growing numbers of people attending church on a regular basis and with enthusiasm. A high point in the year was the Confirmation Service in June for which Rev Denise had prepared all the candidates from the team churches - 12 from St. John's. At a beautiful service, the Bishop commended us as a church that was moving forward Spiritually in a way other churches only ever talk about!

Comparison with last years figures show a significant growth in numbers for both adults and children. Numbers having Christian input during the week has also grown with those meeting for Toddler Praise, school assemblies and worship in church during major festivals. Rev Denise praised God for the work towards greater understanding of the Christian year by the pupils. Both schools received excellent Ofsted inspections and commendations. Rev Denise was personally commended for her work of Chaplaincy and teaching young children the value of Prayer. She said "The Lord is among us as we serve the children of our Parish". There were 8 baptisms last year - 3 of which were adult.

A discipleship group was formed - 15 members made up from the Confirmation group and the Alpha course - to study the Bible and explore their own growing Spirituality and unfolding faith. A women's group meet at Collins' farm on

Friday mornings to do likewise, and there are resident leaders available in Speen should there be any serious takers.

A prayer group has met on the first Thursday in the month to pray for the whole Parish and individual healings. There have been some significant successes for some with serious illness - we are committed to the power of prayer, and look for growing numbers in the future.

There has been some sadness this year due to the loss of leaders in a difficult pastoral situation. However this enables others to step forward. We are grateful to newly confirmed Colin Rushmere, who has taken on the work of Covenant giving. Special thanks go to Churchwardens Marjorie and Pat who have taken on extra responsibilities as the need has arisen. And special thanks to Glynn Harries who has worked harder than you know! There was a very enjoyable evening of 'Pampering' arranged by Doreen Lett and the fundraising group. All benefited!

Sadly, we lose our treasurer James Moorcroft - great thanks for many years sterling work. We welcome with blessing our new treasurer - Caroline Gulliver.

Our Choir is an added blessing to the church, producing such uplifting music and singing for our Sunday services - special thanks to Rosemary, Fiona and Virginia.

Toddler Praise group meet at St John's church every Tuesday afternoon in term time at 2.00pm, sometimes with 30 attendees who enjoy a short Bible story, participate in prayer and songs and a story-related activity. Rev. Denise commends the work of Pam and Suzanne - spiritually aware ladies whose work already bears fruit. Refreshments are served and anyone from birth to school age with adult attendees is welcome.

Thanks to Andrea Bennett for providing Bible reading notes and to Jean Gabbitas for book education opportunities. Do look at our book shelves when in church.

Keeping expenses down and good management on behalf of the PCC meant that we met the amount of our Parish Share and still gave 10 per cent to Mission. We face another increase this year but will meet this challenge in giving in dedication to God's work among us.

And finally, great thanks to Norman and Rev Peter Viney for their continued support, fellowship and prayers, all of which are valued immensely.

Churchwarden Pat had previously prayed and given thanks for the leadership of Rev. Denise and Norman, and the Team Ministry.

The Easter celebrations continued on Maunday Thursday with Rev. Paul Fisk from St. Mary's church explaining the history and symbolic representation of a Jewish festival 'The Passover' which led into our modern day celebration of Holy Communion. This was a fascinating and enjoyable time for

all those who took part, and was followed by the stripping of the church in preparation for Easter Day.

This began with all communicants meeting at the foot of a beautiful daffodil covered cross and continued singing into a church full of people and sunshine, fellowship and the realisation that Jesus has risen again. There was also a service of Choral evensong.

And much enjoyment of Easter eggs – the symbol of new life – during the day.

### Regular Services at St. John's church

#### SUNDAY

8.00am Holy Communion(1662) 1<sup>st</sup>, 2<sup>nd</sup> & 4<sup>th</sup> Sundays  
10.00am All age family Communion 1<sup>st</sup> Sunday of the month  
10.00am Parish Communion 2<sup>nd</sup>, 3<sup>rd</sup>, 4<sup>th</sup>, (&5<sup>th</sup>) Sundays  
6.00pm Choral Evensong 1<sup>st</sup> Sunday in the month  
Junior Church at 10.00am – all services other than 1<sup>st</sup>, held in upper room.  
Details from Jenny King – 01844-343910

#### TUESDAY

9.30am Communion Service in Lady Chapel at St. John's.  
2.00pm Toddler Praise – Tuesday afternoons during term time.

#### WEDNESDAY

10.30am Team Communion Service at St. Mary's church, Princes Risborough.  
1<sup>st</sup> and 3<sup>rd</sup> Sundays Family orientated Service, all age family worship.

Full details of services and more information about St John's church is published in the monthly Parish Magazine 'Viewpoint' and displayed on the notice board outside church.

We look forward to meeting you in our lovely church – you are always welcome – come and be blessed.

### Forthcoming events

A number of baptisms have already been booked for this year and we have 4 weddings to celebrate – on April 28<sup>th</sup>, July 21<sup>st</sup>, Sept and Oct.

JUNE 23<sup>rd</sup> Progressive supper - tickets available from church. Volunteers to host a course should contact Graham or Jenny King on 01844 343910

JULY 14<sup>th</sup> St. John's Summer Ball – a joint fundraising venture with school and church – please buy tickets through church. Why not make up a table of invited friends – contact Doreen Lett on 01844-347655 for more information.

JULY 20<sup>th</sup> Leavers Assemblies.....Speen at 9.15am and St.John's at 2.30pm.

**June Brazier**

### EASTER SUNDAY 2007



Just over 100 of us gathered by the "daffodil cross" to begin our celebration of the Resurrection of our Lord Jesus

Christ all those years ago. Yet, part of the celebration was that, even though it is 2000 years since Jesus died and rose again, His sacrifice still has power to change lives and make people fit for Heaven. We began to sing the hymn *Jesus Christ is risen today, Alleluia* by the Cross and continued as we made our way into St. John's for the service. The service was a joyful celebration of the resurrection and afterwards we enjoyed easter eggs.

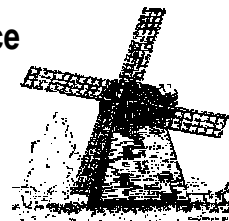
If you weren't able to be in St. John's this Easter Sunday, we think you missed out. So, please make sure that next year you don't do the same. We can guarantee that there is no better place to be on an Easter Sunday.

**Norman Critchel**

# What's Happening in Lacey Green & Loosley Row ?

A LIST OF REGULAR ACTIVITIES to which you are welcome. Others take place but are subject, for example, to membership for which there is a waiting list

All events at Lacey Green & Loosley Row Millennium Hall unless otherwise specified



| WHO in alphabetical order                          | WHEN, WHERE if not in Millennium Hall, and OTHER DETAILS                                                      | CONTACT         | 01844 *        |
|----------------------------------------------------|---------------------------------------------------------------------------------------------------------------|-----------------|----------------|
| Adult Learning – Furniture Restoration             | Thu mornings, term time                                                                                       | Bucks office    | 0845 - 0454040 |
| Happy Wanderers' Walking Club                      |                                                                                                               | Ronnie Lewin    | 274961         |
| - normal walk (5-6 miles)                          | 10.30am. Starting place informed on previous walk                                                             |                 |                |
| - short walk (2-3 miles)                           | 2nd Wed. 10.30am, Millennium Hall car park                                                                    |                 |                |
| Horticultural Society                              | 3rd Wed of Jan, Mar, May, Jul, Sep, Nov. 8pm                                                                  | Terry Fendom    | 342636         |
| Jazzercise – exercises with lively music & company | Tue evenings                                                                                                  | Sue Morris      | 01494 813968   |
| Jingle Tots                                        | Baby to 5 years. Songs, action rhymes, musical instruments, refreshments, playtime. Fridays during term time. | Jenny Stothard  | 344441         |
| Karate                                             | Mon evenings                                                                                                  | Richard Peace   | 07768 – 896078 |
| Kinder Gym                                         | Pre-school Gym Classes. Fridays during term time                                                              | Jenny Stothard  | 344441         |
| Lacey Green Productions                            | Various kinds of theatre, some with delicious food                                                            | Val Brookhouse  | 344207         |
| Lacey Green & Loosley Row Sports & Social Club     | Various activities                                                                                            | Jane Oakford    | 346295         |
| Lacey Green Singers                                | Thu evenings, term time                                                                                       | Jane Brown      | 346071         |
| Lacey Green Windmill #                             | Open Sundays and Bank Holiday Mondays<br>2.30-5.30pm beginning May – end Sep. See below.                      | Michael Hardy   | 343560         |
| Loosley Row & Lacey Green WI                       | 2nd Thu, except Aug. 2pm                                                                                      | Jill Baker      | 275442         |
| Pilates Classes                                    | Tue mornings                                                                                                  | Sue Keeling     | 346656         |
| U3A                                                | 4 <sup>th</sup> Wed afternoon of month                                                                        | Roger Smith     | 01494 484182   |
| Whiteleaf Bowmen                                   | Wed, Thu & Fri evenings, Apr to Sep                                                                           | Dave Evans      | 01494 538235   |
| Windmill Under 5's Playgroup                       | Mon-Fri 9.15-11.45am, lunch club 11.45am-1.15pm<br>At Sports & Social Club (next to St John's School).        | Tina Zychowicz  | 344959         |
| Windmill WI                                        | 1st Wed of month. 7.45pm                                                                                      | Stella Boll     | 347268         |
| Yoga Group                                         | Mon mornings during term time                                                                                 | Annie Silverman | 343643         |
| 81st Over 60's Club                                | 1st Tue of month. 2pm                                                                                         | Carol Knight    | 343093         |

\* Except where shown otherwise

# **LACEY GREEN WINDMILL** is the oldest smock mill in the country and still has its original wooden machinery from the mid 17th century. Since 1971 it has been restored to working order by members of The Chiltern Society. Admission is £1 for adults and 50p for children.

**LACEY GREEN MAIZE MAZE** will be opening as soon as the school is on Summer Holiday, Car park accessed from Slad Lane.

All events at Lacey Green Village Hall unless otherwise specified. Includes some at Speen and North Dean

|                                                                                            |         |
|--------------------------------------------------------------------------------------------|---------|
| May 16 Horticultural Society (3rd Wed of Jan, Mar, May, Jul, Sep, Nov)                     | 8pm     |
| May 19 FA Cup Fayre PLUS MUCH MORE at St John's School – see page 3                        | 12 noon |
| May 23 Horticultural Society visit to Mr Victor Scott's garden, Aston Abbotts              | 6.30pm  |
| May 27 Happy Wanderers' normal walk #                                                      | 10.30am |
| Jun 5 81st Over 60's Club (1st Tue of month)                                               | 2pm     |
| Jun 5 Parish Council Meeting at Speen Village Hall *                                       | 7.30pm  |
| Jun 6 Windmill WI (1st Wed of month)                                                       | 7.45pm  |
| Jun 8 The New Rope String Band set mood for Village Fun Day<br>Speen Playing Field Marquee | TBA     |
| Jun 9 Speen Fun Day at Speen Playing Field                                                 | TBA     |
| Jun 10 Lacey Green Singers at St John's School                                             | 7.30pm  |
| Jun 13 Talk & demonstration on compost making at Old School House, Pink Rd                 | 6.30pm  |
| Jun 13 Happy Wanderers' short walk (2nd Wed, Village Hall car park)                        | 10.30am |
| Jun 13 Happy Wanderers' midsummer evening stroll & supper                                  | TBA     |
| Jun 14 Loosley Row & Lacey Green WI (2nd Thu, except Aug)                                  | 2pm     |
| Jun 24 Happy Wanderers' normal walk #                                                      | 10.30am |
| Jul 3 81st Over 60's Club (1st Tue of month)                                               | 2pm     |
| Jul 4 Windmill WI (1st Wed of month)                                                       | 7.45pm  |
| Jul 9 Parish Council Meeting at Lacey Green Village Hall *                                 | 7.30pm  |
| Jul 11 Happy Wanderers' short walk (2nd Wed, Village Hall car park)                        | 10.30am |
| Jul 12 Loosley Row & Lacey Green WI (2nd Thu, except Aug)                                  | 2pm     |
| Jul 14 Speen Fete at Speen Playing Field                                                   | TBA     |
| Jul 14 Summer Ball by St John's Church and St John's School ##                             |         |
| Jul 18 Horticultural Society (3rd Wed of Jan, Mar, May, Jul, Sep, Nov)                     | 8pm     |
| Jul 29 Happy Wanderers' normal walk #                                                      | 10.30am |
| Aug 1 Windmill WI (1st Wed of month)                                                       | 7.45pm  |
| Aug 7 81st Over 60's Club (1st Tue of month)                                               | 2pm     |
| Aug 8 Happy Wanderers' short walk (2nd Wed, Village Hall car park)                         | 10.30am |



\* Members of the public are always welcome to attend these meetings

# Starting place informed on previous walk - usually within 1/2 hour's motoring of village

### SOME LATER DATES FOR YOUR DIARY including in Speen & North Dean

Sep 6 Speen Festival until 15th. Details to be announced

Sep 8 Annual Show of Horticultural Society

Nov 10 Windmill Artists

Nov 23

& 24 Dinner Theatre by LG Productions with The Command Performers

## If you can offer sponsorship or raffle prizes, please contact **Doreen Lett** on **01844 347655**

**Lacey Green Maize Maze** will be opening as soon as the school is on Summer Holiday. Times and other details from **01844 347435**

~~~~~  
CLOSING DATE FOR COPY FOR THE AUTUMN EDITION

July 17th 2007
~~~~~

Published quarterly by the Village Hall Management Committee.

Printed by Risboro' Printers Ltd., Station Parade, Princes Risborough (01844 344827)