

# HALLMARK

***THE LACEY GREEN & LOOSLEY ROW MAGAZINE***



*Hellebore – watercolour painting by Stella Boll*

***NOVEMBER 2008***

***NUMBER 208***

***ESTABLISHED 1970***

# Speen Festival 2009 Fever Begins

THUR 10 – SAT 19 SEPTEMBER 2009

An air of expectancy has settled over our neighbouring village of Speen as word has spread - Speen Festival 2009 is taking shape! Now in its 5<sup>th</sup> year, this biennial festival is a celebration of the very best artistic and creative talent from the village and surrounding areas. Showcasing **music, photography, art, nature, theatre, dance and so much more**, the festival continues to grow in size and appeal, with last year's festival hosting 11 events and attracting over 1200 visitors. With your help, Speen Festival 2009 will be no exception.



**Ella James-Hart singing accompanied by Sam Laughton**

So what does next year's exciting entertainment calendar herald? Well, kick-starting the festival will be the community theatre production, a truly spectacular show that sets the standard for the rest of the week's performances. Other events include our mid-week *Jazz Concert*. Featuring the Martin Hart Quintet, this event, if the last couple of years are anything to go by, will be an instant sell-out. Also making a welcome return will be our

beautiful candle-lit recital in the picturesque Speen Chapel. We're hoping to add some local poetry readings during this popular soiree. Other events on the cards include an exciting competition for keen photographers, a fun quiz night, more challenging trials at the Speen Bike Park, a wildlife adventure and of course, lots of laughter with the riotous children's theatre show, *Teatro Unfortunato*.

## So what's new for 2009?

Alongside these firm favourites, we're hoping to bring you some brand new events, including a lively debate on a highly topical science issue and a fascinating talk on astronomy by Heather Couper, Loosley Row's international broadcaster and writer on astronomy, space and science. Also in the early stages of planning are thoughts about a community-wide event called 'Speen Big Sing!'. The idea is for local people of all ages from around the area to join together in a grand celebration of singing (no experience needed!). And if that were not

tempting enough, also planned for 2009 will be Speen's first **Food Festival**, organised by the landlord of the King William IV pub, David Hill. Other plans also afoot will be a brand new look and feel for the Festival, so just watch this space.

As is now our tradition, wrapping up the festival will be the Cabaret Supper, a spectacular evening held in the 'Marquee Nightclub', showcasing a wide variety of performances drawn from the wealth of talent within the community at large. All in all, ten days of fun-filled and inspiring events designed to ensure there is something for everyone to enjoy.

With such a full and varied programme in place, all support is most welcome. If you would like to help or participate on stage or back stage, then please get in touch now! To discuss it, just call **Sue Taylor**, our Festival Secretary on **01494 488168** or mobile **07810 318429** or email [sue@dairymed.gotadsl.co.uk](mailto:sue@dairymed.gotadsl.co.uk).

**Jeremy Symondson, Chair  
Speen Festival 2009 Committee**

**Images are from Speen Festival 2007  
- additional to those on February's edition's p19**



**Speen Bike Park Challenge**



**Scene from Community Theatre Production of  
'Three Cheers for Mrs Butler'**

# HALLMARK

## THE LACEY GREEN & LOOSLEY ROW MAGAZINE

WINTER 2008

**H**allmark is published quarterly by the Lacey Green & Loosley Row Millennium Hall Management Committee, although opinions expressed in comment or contribution do not necessarily represent the collective view of that committee.

Our aim is to mirror the mark that the Village Hall makes upon our community, to publish the activities of all Village organisations, and to provide a forum so that the rights, the wrongs, the well-being of village life can be aired.

News from all the Village clubs, societies, church and school, stories of local interest and entries for the Village Diary are always welcome. In addition, any suggestions for improving Hallmark.

### VILLAGE HALL MANAGEMENT COMMITTEE

Clive Hodgton (Chair), Rachel Panter (Vice-Chair), Paula Oxford (Secretary), Yvonne Axe (Treasurer), Karen Hodgton (Booking Sec.), Jill Baker, Stella Boll, Jane Brown, Ginnie Brudenell, Cathryn Davies, Carole Knight, Betty Tyler & Norman Tyler

### VILLAGE HALL BOOKINGS

☎ Clive or Karen on 01844 274254 (answering service)

### EDITOR

✉ Norman Tyler (assisted by Mike Piercy), 5 Woodfield, Lacey Green, Bucks HP27 OQQ (2/3rds down Woodfield, on the left)  
☎ 01844 344606 (with answering service & fax)  
Email [normantylers31@gmail.com](mailto:normantylers31@gmail.com)

### ADVERTISING MANAGER

✉ Chris Baker, "Woodpeckers", Kiln Lane, Lacey Green, Bucks HP27 OPT (past the pond on the left)  
☎ 01844 275442

**The Spring Hallmark will be published in February**  
**- closing date for copy is January 17<sup>th</sup>**

---

## Chairman's Report

## Winter 2008



**W**elcome to the final edition of Hallmark for 2008. Summer was so wet that we all need a bright and crisp winter to take us to what will hopefully be a refreshing spring.

As many of you will be aware, the village questionnaire has now been completed and various 'needs' have emerged for Lacey Green & Loosley Row. Many of these are within relatively easy reach and with a little effort can/will

become a reality. The younger generation have requested a youth club and film night. Adults are needed to help run these and volunteers have come forward to organise the first film night. Sports were another area that was highlighted and with the great facilities available at the sports club, a little effort will hopefully put some or all of these ideas into practice. The village shop came out as a clear 'wish' and if anyone is willing to sit down and try to work out a practical way to make it happen please contact us! It may just be basic supplies to start with but there are many avenues that can be explored

and offering to help does not mean that you have to 'run' the shop. Don't be afraid of any of these ideas, simply come forward and make some initial enquiries.

Good news is that work on the village hall extension is due to start very soon. The extra storage will help all the organisations that use the hall and give us extra space for all the great ideas to take place. The hall is currently available to hire on a regular basis on Monday/Tuesday afternoons and Thursday mornings. If you would like to run a class or group please call **Karen** on **01844 343113**.

After an appeal in Hallmark earlier this year, we now have an excellent team of volunteers who have built and are running the new website

**[www.laceygreen.com](http://www.laceygreen.com)**.

Work is still in progress but we are now live and it is proving to be a great asset. Please bear with us as we add new content nearly every day. This website will be an invaluable resource for both villages and a fantastic central point of reference for all matters to do with our local community. If you haven't already done so and would like a free link for your local organisation, please

get in touch - via the website of course! The Village Hall is well represented and the dedicated page is brimming with information, pictures and of course rates, so if you are needing to use the hall, just go to our page on the site and check it out!

Please keep an eye on the notice boards (both inside & outside the hall), the website and Hallmark. There's always lots to do and numerous activities to keep everyone happy.

As we are all aware (how can we forget if we read the papers and watch the news) there's a credit crunch in progress. So supporting all the local activities and of course our pubs is more important than ever. Good food, wine and company all within walking distance, what more could you ask for!

Wishing you all a very Merry Christmas and hopefully a prosperous New Year - keep smiling.

**Clive Hodgton, Chairman, Village Hall**

## From the Editor(s)



**O**ur village website **[www.laceygreen.com](http://www.laceygreen.com)** is growing at quite a pace now, an enthusiastic team of volunteers working enthusiastically, meeting

every 2 or 3 weeks to discuss where we go next and who's going to do what. Marvellous – and creating local history in itself! See page 7 for details further to our above *Chairman's Report*. Give it a visit!

**Local historians** are now joining together to help the website team provide much more information about life of previous centuries in our area. Old documents, photos, stories and varied information, providing all kinds of interest at no cost (except that of volunteers' time).

**Con Baker** has started her second century and there is yet more on her on pages 21&22. She and some of her family feel there has been too much in Hallmark of her, so if you feel the same, blame me not her.

If you are interested in joining or helping with a new **Youth Club**, contact Joan Smith (details on page 22). Many other subjects relating to enhancing **our villages' facilities and activities** are on pages 1 and 29.

Nearby village Speen has some events very different from ours and vice-versa, so we can both benefit by enjoying supporting each other's. An outstanding example is the **Speen Festival 2009**. I went to the last, in September 2007, and was very sorry to see so few from our villages there to enjoy such a well-run variety of pleasures. The organisers would welcome your participation in helping – or running – any aspect of the Festival. Learn more from the loose flyer in the front of each Hallmark and put Sep 10-19 2009 in your diary – or miss a lot of pleasures for all your family. We will publish a detailed programme when it has been finalised.

Geoff Gomme's article on pages 36 & 37 gives a real feeling of our old English relatively relaxed, unhurried sport of **cricket**. It summarises the season's results and its two photos help to bring it to life.

**Lacey Green Productions** announce on page 27 some coming mouth-watering theatrical evenings, both in our village hall and in a home setting.

The **Horticultural Society's** report and photos of their Annual Show on page 41 also make good reading,

It's both cheering at this time and humorous to read the **Apologies "advert"** on page 3, paid for by one of our regular advertisers.

## Village Notices

### LACEY GREEN SINGERS

#### WANTED - MUSICAL DIRECTOR

We are an established choir comprising approx 30 members, and we sing for fun. We perform four concerts a year of light hearted and popular classical music. We are looking for a musical director who would be prepared to conduct our rehearsals on a Thursday evening between 8 and 10 pm at St.John's School, Lacey Green. A fee is negotiable.

We are also looking for new members (age immaterial), especially men, to come and join us. No previous musical experience is necessary and you certainly do not need to be able to read music, or have an audition. Our emphasis is to sing for fun and to enjoy socialising. If you are interested do please give me a ring - I will be delighted to hear from you.

Helen Collins 01494 562240

### Come to Chris Dignan's annual Astro Talk

Two talks in one evening: *"Naked Eye Sky"* and  
*"Flying Back to the Moon and Beyond"*

Sunday 21<sup>st</sup> December at Lacey Green Village Hall.

Hall open at 6.45pm for refreshments. Talks begin at 7.00pm

Ticket price of £5 includes all refreshments (coffee & tea to begin and a glass of wine at the end) and a set of informative notes.

## Apologies...

We regret to inform you that, due to prior commitments, we are unable to take part in the forthcoming recession.

Westmead Plumbing and Heating Ltd

01844 275908    07785 326966

The country is reeling under the prospect of an economic meltdown and we are still staggering from the most difficult harvest we can remember. Not the best of times. The Summer never came and we just couldn't get the crops in. We were not alone. Some places were even worse off than us. It might be poor soil up here but at least we were not flooded. However, the crops didn't get a chance to dry and we got it in bit by bit up to 22% moisture, when it should be 15% or less. We did eventually get the fields cleared, which enabled us to start the autumn cultivations in readiness for planting next year's crops, already very late, but at least now its under way.

We are left with two massive problems. Firstly, the grain is very very wet. We do have some drying bins here and a portable dryer. It is all very slow and expensive, but we can't sell until it is dry, so we are stacked out with wet grain and having to shift it around. Undesirable, difficult but necessary work. Secondly, we grow and contract to sell high quality bread-making wheat. It is more costly to produce but should give a better return. This year our contracts are not worth the paper they are written on because the wet ruined the hagberg in it so it is unsuitable for bread. With no contracts in place we have to sell it on the animal feed market, which is flooded out with that grown for it plus all that from the broken milling contracts. We are not alone - the problem is nationwide.

The ironic thing is that the crops had looked so promising. As usual, we had entered the Chiltern Hills Agricultural Society crop competitions. These are in a ten mile radius of Wendover, split into north and south by the Upper Icknield Way. We won four firsts, two seconds and two thirds. That was until the summer failed to arrive.

The grass grew well but it was all a bit watery and the cows do enjoy the sun. We did win the grassland class too, so that was good. But if it were true that cows sit down when its going to rain, they wouldn't have had time to get up to be milked.

Last weekend was an eventful one. Friday and Saturday the maize was harvested, chopped up and clamped for the cows in the winter. We grow several fields of it and have to hire a special harvester. It's too tough for our combine to tackle. On Sunday it was the Harvest Festival, so the harvest was truly gathered in, wet though some of it still is. Once again, we did remember to stop the combine and take enough out of the cutter header before it got threshed in order to make two sheaves to

take to the church. Remembering to do that is always touch and go.

I've never written about our summer maize maze. Of course this too was effected by the weather. It is so much nicer when the sun shines and people can picnic and relax in our beautiful countryside. But we are a stalwart nation. People still came, bringing their visitors from all over the world when it was reasonable weather and coming with their children even in the rain -- coats, boots and umbrellas at the ready, especially as the holidays were going by and they were being driven scatty trying to amuse them at home. Lots of people come not for the maze but to meet friends for tea or coffee. You can bring your own, but we make hot drinks to order, have a huge selection of cold drinks, including of course, flavoured milk and the wonderful local Beechdean ice cream. Not forgetting a mean selection of cakes. I'm afraid this reads like an advert, that's why I waited till after it had closed to write about it. The tea shop is not to make a big profit, it is a facility for the maze. On the other hand you could look at it as a facility for the village. An outdoor tea/coffee shop, open every day, free parking, and you don't have to do anything but chill out with your friends. We will be there.

We only closed one day despite this "summer" when everything was simply awash. For all those who came we are so pleased to see you. We hope you had a good time. Were you impressed by the models of the windmill and the church? Perfect replicas of those in Lacey Green, now built into our crazy golf course. Our model-maker insists on remaining anonymous so no good you asking for one. Sorry.

If you didn't come, perhaps next year we will have a glorious summer and we can tempt you up our hill. A flock of swallows wings it's way around us and on a Saturday it is a perfect village scene with the cricketers in their whites playing below. It gives me great pleasure to see village life going on just how it should be. And as that must be at least one good thought with which to end the year, I'll just wish you a very happy Christmas and a better 2009 for everyone.



In all things of nature there is something of the marvellous.

Aristotle

Wherever you go, no matter what the weather, always bring your own sunshine.

Anthony J. D'Angelo

# Lacey Green Web Site Opens - Visit [www.laceygreen.com](http://www.laceygreen.com)

Over the past few months a small team has been preparing a village web site which you can find at <http://www.laceygreen.com>

The site is a repository of information about local services and interests, a diary of forthcoming village events and a notice board for societies and individuals to promote their own services and events.

The development has been sponsored by the Village Hall Committee and the site provides a showcase for the Hall. It includes full details of the Hall facilities with pictures, charge rates and booking information. In the near future we hope to include a video tour of the Hall. If you have any friends who are looking for a venue for a local event – direct them to the site.

We have started to put content onto the site and have some pages on local places of interest and clubs. We are now going on to build pages with details of local community services (useful when you can't find a councillor's phone number or a bus timetable). We also have plans for a History section which can hold articles, photos and film clips which capture aspects of the villages' history. The site covers both Lacey Green and Loosley Row, we are keen to be even handed and give equal space to both communities.

The key to the attraction and usefulness of the site will be to have fresh content and news coming in continually. To achieve this we will be relying on villagers to send us articles to publish, events to promote and any sort of information of interest.

The content of the site will obviously have a strong overlap with Hallmark – and indeed the same editorial team is involved with both. The site contains copies of past years of Hallmark that you can browse if you feel nostalgic – and they include photos in full colour. At the time of writing the past 4 years Hallmarks are on-line. This will grow as we work through the backlog of scanning the printed archive. New issues of Hallmark will be published on the website early in the same month as the printed versions are distributed by the deliverers.

We intend to keep the web site and magazine separate. You will still have the familiar printed copy dropping through your letter boxes for the foreseeable future.

We are also keen to take advertising. Personal small adverts will be free, but we will make a small charge for adverts from local suppliers. We have started by publishing (for free) details of all the suppliers that advertise in Hallmark. It will cost £10 to be listed in the Local Suppliers section for a year. We also offer the opportunity to buy an advertisement on the web site home page. Initially these will cost £10 for a month or £25 for 3 months.

Please be aware that the site is still being developed. Some pages are only partially complete and some have not even been started yet – we need your help to provide us with material. We are very flexible and willing to discuss developing the site to accommodate any features that we may not have included at first.

## So: What do we want you to do?

**Everybody:** Please give us any feedback you may have – tell us of the sections that you like and make suggestions about features you would like to see added or changed.

**Everybody:** If you know some newsworthy events, have announcements to make or messages to send – let us know and we'll add it to our news section – perhaps even the front page!

**Advertisers:** send us 'copy' to publish, your trade logos to display or websites to link to.

**Clubs, societies, community organisations:** Send details of what you do, photos of your events, logos to display, details of forthcoming events, web links, contact points etc. Contact us if you have a forthcoming major event to promote that you think should be on our home page.

**Authors, historians, publishers:** Contact us to discuss how we might publish your content and promote your interests.

## To contact us

See the "**Contact us**" section of the website to email the appropriate member of our team OR send an email to [enquiries@laceygreen.com](mailto:enquiries@laceygreen.com) OR, if the internet and email are not appropriate, you can telephone Mike Piercy on 01844 344021.

# The Windmill WI



It seems impossible that we are heading towards winter already- we don't seem to have had any summer!

However, on one of the very few good days in August several of our members enjoyed a great day out at Wisley. The sun actually shone and the gardens looked magnificent. I think we all came home with lots of ideas for our own gardens.

At our monthly meeting in August the speaker was Mrs Owen who talked to us about *Healthy Eating*. Her talk was refreshing – her motto seemed to be 'everything in moderation', which made most of us feel much better about our eating habits!

At our 21<sup>st</sup> birthday meeting in September, we welcomed guests from the other Institutes in our Group. We were entertained by Mr R Goffe, who gave us a fascinating insight into his life and work as a dwarf.

At the beginning of October we held our Annual General Meeting. Our President, Secretary and Treasurer all reported on a very successful and entertaining year. The Committee and President, Mrs Pat Richards were all elected back in office for another term. We followed the serious side of the meeting with a quiz, accompanied by a glass of wine to try and help the help the brain function!

During October we held our Jumble Sale and once again, despite fewer bargain hunters, it was very successful, making over £400! Thank you to everyone

who donated jumble and to those who came and made purchases.



▲ Before the rush!! ▼



As you can see, we have had an enjoyable summer and we are looking forward to an equally good winter – why not come and join us. We meet on the first Wednesday of the month in the Village Hall at 7.45pm.

**Daphne Williams**

## Windmill Under 5s

By the time you read this, the Christmas fun and preparations will be well under way and the wet summer will probably seem like a distant memory! So many exciting new changes have taken place in such a short space of time. The outdoor playhouse is now up and being enjoyed by all; the new starters have settled in and a new-look foyer (complete with personalised pegs, trays and bags!) welcomes children and parents / carers as they enter the setting. September also saw the

recruitment of two new members of staff; the introduction of the Early Years Foundation Stage curriculum for all, as well as the election of a new Committee! It was fabulous to see such a great turn out at the AGM and I would like to take the opportunity to thank Tina and the out-going committee for all their hard work last year and for the smooth handover!

The term got off to a flying start with the topic of 'Autumn' which saw the children enjoying a seasonal walk, followed by leaf painting, apples printing and learning about the life of a hedgehog. Sue Lake-Simmonds and her team helped the children to proudly produce a lovely Birthday board with lots of smiley photos reflecting just what a happy place Windmills is! Story / circle time,

# Loosley Row & Lacey Green WI

**August 14<sup>th</sup> - Garden visit & cream tea** To our great delight, this afternoon, which had been organized by our President, Jill Baker, exceeded our expectations. It took place on one of the very few sunny days of August and on the only sunny day of that week!

The garden in Ellesborough was a delight, divided into various "rooms" so that every few steps one was greeted with a fresh colour scheme or a different design. The entrance to the garden was graced with a beautiful sculpture of flying birds and the friendly hosts were only too pleased to talk about the plants and explain their needs. The afternoon was rounded off by a delicious tea served by our president's daughter, who fortunately lived only a few doors along the lane.

**September 11<sup>th</sup>.** This meeting included a talk with slides by Mr Runnals Davis with the intriguing title *The Idle Women!* This turned out to be the results of our speaker's research into an amazing group of women who kept the canal barges ferrying essential commodities during the war. Most people have heard of the Women's Land Army but few of us know of the hard work carried out by these young women. Our speaker had made an effort to track down and meet with these intrepid ladies who are still alive. This most important war effort has received very little recognition.



"Oyez Oyez!"

The meeting of **October 9<sup>th</sup>** was one where our WI had the pleasant duty of hosting the Group Meeting. We provided a really delicious tea and most outstanding speaker to entertain our guests – The Town Crier of Beaconsfield. He made his deafening entrance with the ringing of his great heavy bell, striding in in buckled shoes and a wonderful green and gold uniform of

Georgian design. His most informative and entertaining talk held us entranced and, needless to say, we heard every word!

**Jean Gabbittas**

## QUIZ NIGHT

**S**eventeen teams took part in the Loosley Row and Lacey Green WI Village Quiz held on 15<sup>th</sup> October in the Village Hall.



Teams answering questions while scores were kept



Laughing as well as serious thought



Jamie Carter, our Quiz Master, couldn't be bettered!

Jamie Carter was once again our Quiz Master. Chris Baker and Tony Reid kept the score and, after a very close finish necessitating a tie-break round, the **Black Horse team** were the **winners**. Runners up were the High Wycombe U3A and the Loosley Row and Lacey

Green WI teams. £180.45 was raised for the Village Hall and a donation made to Jamie towards Lighthouse.

**Jill Baker**

## **We hosted two Chernobyl children for a month**

**FOR LIFE LINE CHARITY, RISBOROUGH LINK**

### **A DIARY OF A HOST FAMILY**

**B**ledlow village hall has in the past been the half-way stop for children on their way to new people to look after them. On Friday 11<sup>th</sup> July 2008, 10 children not with address tags, gas masks and small suit cases but with red hats and knapsacks, arrived from Belarus via Gatwick, looking confused and very tired. Introductions and last instructions from the children's leader and we were on our way to Henton with 2 lads from Belorussia.

Two non-English-speaking 11 year olds and a non-Russian-speaking 60 year old couple (no children) does not at first look at first sight a good combination for a month's holiday for the lads. We had done a lot of preparation so we intended to make a good job of it.

There was a very full program of events and visits during the 4 weeks. Too many to mention all, but some notable days out were horse riding at Shabington, Woburn Safari Park, Wembley for a tour of the stadium and to hold the FA cup, kayaking & wall climbing at Longridge Boating Centre, Marlow. We must also thank those at Radnage Church for the wonderfully organised craft morning. Bledlow residents must also be thanked for allowing the children to monopolise their pools and gardens for all sorts of games and activities and for providing BBQs as well.

The **Maize Maze at Slad Lane** provided an interesting and unusual outing one hot and sunny afternoon. As we set off for the first way point, our two boys, a 10 year old friend and me, I decided I would play no part in the map reading! Our 10 year

old was soon showing the lads how to "read" the map. Shortly, all 3 were taking part in finding the right/wrong way to the following correct waypoints without too much time being lost or making unnecessary diversions. Arriving at the finish ahead of some and after others, we needed cooling drinks, shade and someone to wash our feet after traipsing through the Maize Maze earth for an hour or so.

The **Whiteleaf Bowmen**, at their club in **Lacey Green**

**Village Hall**, provided an archery afternoon for the Chernobyl children. The bowmen, ever mindful of safety with children, provided more than enough adults to ensure that every child fired off lots of arrows, a goodly few hitting the targets, some hitting gold. A little coaching goes a long way and the boys are soon competing against each other, with cheers and jeers greeting each arrow fired off. As ever, the event is over too soon and the children depart the archery field with aching arms.



**Two of the children receiving instruction on using a bow and arrow at The Whiteleaf Bowman Archery Club**

Christine and I have felt that the holiday that we gave to "our" two Chernobyl children had been most rewarding. In fact I'm not sure who got the most pleasure, us or the children. The question is "would we do it again?" Yes, of course we would.

All good organisations start their planning for the next year's event as soon as this one is over. Chernobyl Children - Risborough Link, is no different. There are so many things to do and prepare but the overall priority, initially, is to arrange host parents for 2009. We are looking for people with that most important requirement, time and patience to welcome into their homes 2 children for a month or a fortnight from mid July to mid August.

For more information please contact **Ann Smith** on **01844 345558** or take a look at the website [www.ccll.org.uk](http://www.ccll.org.uk).

**Dave and Chris Breden**

# Saving Energy

**Advice by United Sustainable Energy Agency**, providing impartial advice to residents of Bucks, Berks, Hants & Isle of Wight.

If you have little or no insulation in your home, up to 40p in every £1 of heat you pay for could be escaping before you feel warm. Yet, being energy efficient can cut as much as £250 off your annual energy bill and reduce your household's carbon dioxide emissions by around two tonnes. Here's how you can start saving:



## 1. Look for the logo

Buy Energy Saving Recommended electrical appliances. These are amongst the most efficient in their class. Using them could save you up to £37 a year.

## 2. Switch to energy saving light bulbs

Energy saving light bulbs last around 10 times longer and come in a range of styles. Each bulb you fit will save up to £60 on electricity over the bulb's lifetime.

## 3. Have lofty ambitions

Installing 270mm (10.6") of loft insulation could reduce your heating bills by a healthy £110 a year. This remains one of the easiest and most cost effective ways to save energy.

## 4. Insulate wall cavities

Around 33% of the heat lost in an un-insulated house escapes through the walls. Each year following installation, cavity wall insulation will trim your heating bills by about £90.

## 5. Give your home an energy health check

Still not sure which are your home's weak spots? Why not complete a Home Energy Check.

For more free, impartial advice call the Energy Saving Trust's local advice centre free on **0800 512 012**.

# Happy Wanderers Walking Club

## BALLINGER COMMON AREA Sun 31 Aug

Twenty four members turned out for a walk on and around Ballinger Common (north of Great Missenden) on an overcast day. It was the last day of August and after an awful summer we had little hope of a fine day.

Nevertheless, spirits were high as usual and we made our way through open fields and woods. Footpaths led us through a huge wheat field, which would have been cut weeks beforehand. It was sad to see the corn looking in such poor condition and still waiting for the combine..

We are now looking forward to our annual weekend away in the first week of October. This time we are off to Aldeburgh on the Suffolk coast and are praying for good weather, which has been in short supply this year!

**Roger Brudenell**

## WALKING "WEEKEND" Sun 5 - Tue 7 Oct

On the wettest Sunday in October, in a howling gale, 36 people set out from Buckinghamshire to find an unknown hotel, on the **east coast of Suffolk**, at the start of our three-day walking trip. Everybody arrived without losing their way and, having checked in, immediately wanted to experience the very bracing air and sea-spray that **Aldeburgh** is famous for. This did entail leaning into the wind almost horizontally but we managed to see into the famous RNLI Boat Station on our way around and the seashell sculpture in memory of Benjamin Britten.

Monday dawned calm and sunny, which really lifted everyone's spirits. We all gathered at **Orford** car park near the ferry, which runs over to Orford Ness, now a famous bird sanctuary but which was previously a War Department research station and bombing range for the Royal Air Force. All 36 members tackled the first part of the walk along the sea wall and eventually the group split to meet up again later at The Jolly Sailor for lunch. Several of our over-80s (who will be nameless) accomplished the whole walk which turned out to be well over 5 miles. There were lots of blisters but no broken bones and no blood!

We saw skeins of geese and swans flying, peewits and gulls, an egret and larks and experienced the feeling of space and big sky which East Anglia is famous for.

In the afternoon, we all ended up at **Snape Maltings**, where Benjamin Britten once conducted his concerts but which is now a collection of small, specialist shops surrounding the concert hall.

On the second day we had a very interesting tour around **Ickworth House**, the home of the Hervey family, and keen walkers had a variety of walks of varying lengths to tackle in the afternoon in the extensive grounds.

The hotel bar was well patronised on both evenings and the food was excellent – again an extremely sociable and successful two days enjoyed by everyone.

**Liz Southon**



The 36 Happy Wanderers ready for the 5+ (some thought 6 at least!) mile walk

Photo by Ronnie Lewin

# Obituaries

## ALAN SOLMAN – further to previous edition

Alan Terence Solman 1926-2008: husband to Vera; father of Mike and Tracy; grandfather to Lawrence, Freddie, Leo and Oliver; a dedicated family man and good friend and mentor; a regular churchgoer; a successful business man working in the How Group and Lewis Electrical in the engineering industry; a keen rugby player for London Wasps and supporter; a dedicated fan of New Orleans jazz (who had visited New Orleans a number of times); a supporter of village activities; a fund raiser for the village hall; a member of the village hall committee (until he was retired on age grounds); an enthusiastic do-it-yourselfer (who was always looking to maintain his home to the highest standards); a wall builder (who created a number of unique artistic walls); a very able builder's advisor and helper; a survivor of prostate cancer and of major heart surgery (the first time); a great man who will be missed by everyone who knew him.

Andrew Stone

## FRANK GLENISTER

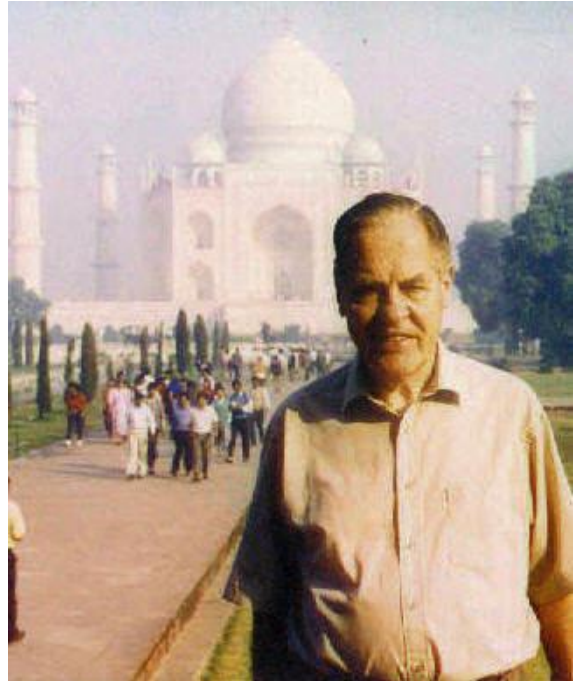
Frank was born on 17 November 1925 in High Wycombe. He went firstly to Crowne House Preparatory School and then at the age of nine went to the Royal Grammar School. He achieved both very good School and Higher School Certificates, which allowed him to go to Jesus College Cambridge to read Mechanical Sciences. In 1945 he graduated from Cambridge and moved up to Manchester to work for Metropolitan-Vickers at Trafford Park. Whilst in Manchester, he became a life long fan of Manchester United and enjoyed watching their home matches.

In 1950 Frank moved back to High Wycombe and started to commute up to London. However soon afterwards, his father's health deteriorated and he and his brother Bernard took over the running of the family business, Thomas Glenister.

The furniture factory in Hughenden Road was founded in 1839. Over the years it made high quality furniture for governments here and elsewhere and their name was known for excellence. Projects included all the first class dining saloon chairs for every Cunarder afloat, seating for the House of Lords and Commons and a replica Cabinet Room Suite for the Government of Ghana.

He took a very keen interest in the local furniture industry

and became President of the High Wycombe Furniture Manufacturers Society. Here, he was actively involved in promoting the interests of the local furniture makers. However, in the late 1980s and early 1990s it became increasingly evident to the family that the furniture industry was going to change forever, and the family made the difficult decision not to invest any further in the company and to gently wind it down. This was carried out and eventually the company sold the property to Safeways in 1996.



During the mid 1960s he met Dawne, and they married in 1967 and enjoyed 41 years of a very happy marriage. He took on the role of Stepfather to Dawne's two sons Paul and Stephen and in 1969 their son Nigel was born.

In 1971 the family moved to the current house, *Edenhall* in Loosley Row. Frank was so drawn by the views that despite all the other disadvantages the house had, he had to have it. He especially enjoyed the local walks and this led him to becoming a founder member of the Happy Wanderers Walking Club founded by Ted Janes. When he stepped down, Frank took up the role of leading the club for a few years. He also enjoyed being actively involved in other Village matters and was a committee member of both the Village Hall and the Residents Association.

Frank lived a full life, including seeing much of the world upon his retirement and he enjoyed many happy holidays in Devon with his family. It was only in the last five years that he suffered intermittently with poor health. His passing in September leaves a big, big hole in the family and he will be missed enormously by all those who knew him.

Nigel Glenister

# The Old Lacey Green Bake-house

WAS LOCATED ON THE RIGHT HAND CORNER ENTERING GOODACRES

By Pamela Armstrong (née Janes)

currently living at 8 Greenways, Highcliffe, Christchurch, Dorset BH23 5AZ. Tel no 01425 276587

When Norman Tyler approached me to write memories of the old bake-house where I was born and lived for twenty years I wondered if I could manage it, but here it is. My first memory was being carried over to an air raid shelter in the farmyard, as we had given part of the house over to a family of evacuees from London, Mr and Mrs Cooper and their daughter Adrienne.

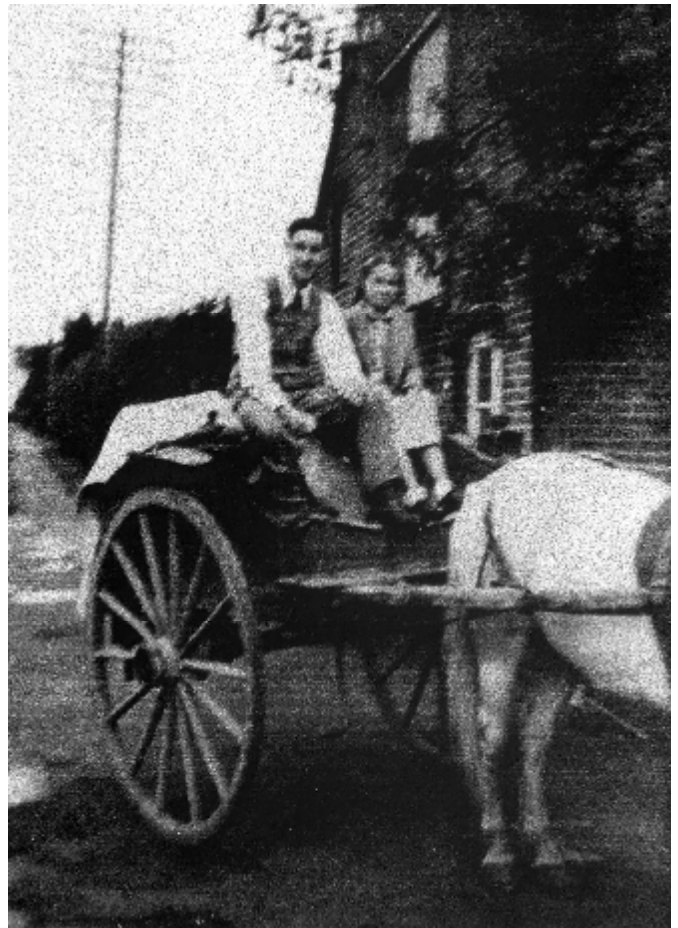
I have some wonderful memories of the bake-house. My Dad would rise very early every morning of the week and started his working day at 5am. He would take the risen dough from the Proover, a large wooden trough with a lid about eight feet long, three feet wide and about two feet deep, where it had been placed the evening before. Large pieces would be cut off and placed on the workbench. From this with a sharp knife, smaller pieces were cut off. Charlie Claydon worked with my dad and I have memories of them both kneading the dough and then placing each piece on the scales to ensure each loaf was the correct weight. The Weights and Measures would call without appointment to weigh the finished product from time to time. The dough was then placed in a tin. These were then placed in the oven, a coal fire having been started earlier, ensuring that sufficient heat was available to produce the good crusty loaf dearly loved by the residents of Lacey Green and Loosley Row. Upon removal of the bread, it was brush coated to give it a glossy finish and I shall always remember the smell of the freshly baked bread straight out of the oven. The bread was then ready for delivery, but more of this later.



After the delivery round was completed, the dough mixing machine had to be filled to start the whole cycle

all over again, the flour was carried on my fathers back down from the loft and placed into the machine. I, even as a small girl, would often turn the handle. This was very hard work, and his friend Sam Gomme would often be there in the Bake-house to have a chat and turn the handle, for which my dad was very grateful. In latter days the mixer was driven by electricity.

Bread rolls were baked daily and each morning dad would deliver these to the canteen ladies at Austin Hoy, who would cut, butter and fill these for the men working in the factory. Sometimes, he would produce Lardy cakes - there was always a big demand for these.



On Christmas morning the villages would bring their turkey and geese etc for baking in the oven, and what a lovely sight they were when they came out. Another memory is of the Harvest loaf for both the Baptist and Methodist Chapels and these were always plaited.

We kept a horse to pull the bread cart, dad delivered everyday and respected all his customers. He also sold animal feeds, these being kept in the loft with the flour. Each sack was carried up and down the ladder on his back, a very hard job. I would go with him on the cart to help deliver the bread at a very young age and when we took bread up to Green Hailey sitting on top of the cart, dad often said it is too cold for you up here in these biting winds and made me lay on the floor in the back under the cover. I used to ask him "Where are we now?"

My other memory is of taking the horse to the blacksmith in Princes Risborough. Dick Jacobs, the horse, would often fall down and people always came to help to pick up our tired old horse. I can still remember the nice smell in the smithy and then a bun from the cake shop. Work was very hard for dad and Charlie as life was very different in those days.

We were always very fortunate in having some really good lads who helped him at different times with his deliveries, Dudley Stevens, Norman Watson, Roger Janes and Geoff Gomme.

Work was a six-day week, with bookwork and a dough mix on Sunday evenings. Dad's only relaxation was to go to the Sunday service at the Methodist Chapel and sometimes at the Baptist chapel in Loosley Row. This he loved, since he was a man of great faith and always did his best for everybody. There were no holidays for the bakers in those days. The family felt so pleased that he

did not see the old bake-house pulled down after being occupied by three generations of the Janes family and serving the villages so well, surely it deserved a kinder fate.

On a brighter note, I have managed to obtain the original bread bicycle lovingly restored by Sid Attridge. The cart has recently been discovered dumped in a hedge in Highwood Bottom. This was a big highlight but, unfortunately, very much weathered, this now awaits possible restoration.

For village historians and those who might be interested in the earlier history of the bake-house, it was originally started by my great-grandfather Henry Janes in "The Stores", Lower Road, Loosley Row and moved subsequently to the new larger premises in Main Road, Lacey Green. He had one son, Hezekiah, who took over the business. My father (Sydney, son of Hezekiah) had two daughters; otherwise the business and name may have carried on had boys been born. Articles on some aspects of the bake-house have already appeared in previous issues of the Hallmark, numbers 73 (Jan & Feb 1991) and 76 (July & Aug 1991).

Lacey Green and Loosley Row were thriving productive villages with 4 shops, a post office and the bake-house. Only the public houses, of which there were four, now reduced to three only, appear to have survived the changes that the villages have undergone.

---

## Lacey Green Windmill

As readers will know from previous articles, the painting of the exterior of the mill was planned for June this year. This was duly completed at the beginning of the month, and as forecast, we had six consecutive fine days for the work. However, whilst this was in progress, a problem was discovered with the fantail mechanism. As the 'cherry picker' was on site, the mechanism could be given a thorough inspection and a decision was made by the restoration committee to dismantle the fantail, repair it and repaint it. With the assistance of a giant crane and a most helpful driver, the fantail was lifted off its mounting. This was an amazing sight, to see it dangling in mid air at the end of a large hook. Work of various types was carried out, including rebuilding the ends of the fantail shaft and giving them new bearings. On 7th August the fantail was put back in place to do its essential work of keeping the cap and main sails facing into the wind for the winter ahead. This is particularly





important when our changeable climate is causing more extreme conditions and winds than we remember.

If you missed our open days this year, make a note in your new diaries and calendars for 2009 that we will open from 3rd May until 27th September, on Sundays & Bank Holiday Mondays from 2.30 to 5.30, with last admission at 5.00. National Mills Day is on 10th May when we will hope to have the sails turning, but as always this will depend on the weather.

For further information, also new photos, see [www.laceygreenwindmill.org.uk](http://www.laceygreenwindmill.org.uk). Contact Address: Torridon, 10 Woodfield, Lacey Green, Bucks, HP27 0QQ.

**Betty Hardy, Publicity Officer,  
Lacey Green Windmill Restoration  
Committee, The Chiltern Society.  
01844 275871**

## Con starts her 2<sup>nd</sup> century !

**SHE HAD HER FIRST EVER RIDE ON A MODEL RAILWAY**

**on Tuesday 23<sup>rd</sup> September**



Con Baker has long hoped to have a ride behind a model steam engine. Her grandson Jeremy, who lives in Holmer Green, remembered that there was a railway behind the trees in Holmer Green Sports Association grounds. Brian & Carol Dockerill of Woodfield are members of the **High Wycombe Model Engineering Club**, which runs this Holmer Green track, and arranged for her to have a ride, aided by several other members of the club.

On a cool, damp and cloudy morning a special train was assembled pulled by two Stanier 4-6-0s "double-heading" (a first for the club). Con arrived with Betty and Norman Tyler and made their way to the awaiting train.

We had anticipated that getting astride a carriage could present us with a problem but Con had no trouble 'getting her leg over' the carriage seat. The train then pulled out of the station for one of many circuits of the track. In the end it was time to stop because it was getting cold and we had an appointment to take her for lunch at a local pub.

Con is now the first centenarian lady to ride on the Holmer Green Railway.

**Eric Stevens, Secretary**  
**High Wycombe Model Engineering Club**  
**Tel 01494 438761**

## **A New Youth Club is Starting Soon in Lacey Green...**

*Are you interested in coming along to meet with your friends,  
or even make new ones?*

**Coffee Shop   Indoor Games   Film Nights   Computer Club   Open Chat Nights**  
**Games Console Link up Nights**

If you are interested in finding out more, please call **Joan Smith** on: **01844 342322**  
or email us at: [youth@laceygreen.com](mailto:youth@laceygreen.com)

**OUR AIM IS TO CREATE A SAFE INDOOR CLUB FOR THE VILLAGE'S YOUTH TO  
MEET AND SOCIALISE IN A WARM FRIENDLY ENVIRONMENT**

**ADULTS:** We NEED as many helpers as possible to run and staff the new club properly. If you can spare a few hours even once a month, please get in touch and we can set up a rota, which will be much easier for everyone!

## **Around Our Local Pubs**

**THE BLACK HORSE**      **by Lynne Comley**

**T**ime seems to fly by, as it will soon be Christmas again. Where has the year gone? All the summer leagues are now finished and the winter ones begin. **Domino** and **crib** on Mondays and **darts** on Thursdays. We are looking for new dart members. If you fancy a night out and can throw a dart, why not join our darts team? Call in and see me and I will sign you up. This league is for ladies and gents.

**We won the Marstons Aunt Sally Competition** in Oxford. We had to play many Admiral Tavern pubs in Oxford, so we travelled far and wide. Our prize was a lovely meal in Witney, followed by a tour of the Wychwood Brewery and we were given a nice tee shirt each at the end of it. A good day was had by all. Well done to all the players that won.

Our house **Aunts Sally teams** did well this year. Our A team came 2nd and our B team came 4th. Well done to you all.

It was nice to see more at our quiz nights. Thank you. Well done Lisa, Ian, Magoo and Jo for **winning the Village Quiz**, which was held at the village hall, Lacey Green.

Remember the last Sunday of the month and it is free. Keep your eye open at our boards for all coming events.

We are now booking for the **Christmas menu**. Pop in and have a look - you might like it. It would be so nice to see some new faces from the village some time. You do not know what something is like unless you try it.

A pub is closing every day at the moment due to no trade. In this village and Loosley Row you all so lucky to have three nice public houses and restaurants, so why don't you try them?

I would like to say a thank you to all my regulars and staff for all their support and help in the past 12 years. You have all kept me going and I appreciate this.

Hi,

The imaginatively named

## Young persons page

*It is I again sitting here, looking rather blankly at my monitor with only the faint hum and beeping of my computer for company. I sit and begin trying to stroke my non-existent beard for ideas. One idea comes, then another, and another. I realise that these ideas are probably as relevant as a triple-decker bus driven through a cake shop by Keith Moon. But, hey, what's the worst that can happen.*

### RANDOMLY RANDOM LAWS FROM RANDOM PLACES

#### No: 1

In New Jersey, USA, it is illegal for a man to knit in the fishing season

#### No: 2

Since 1313, in the UK it has been illegal for an M.P. to don armour in parliament

#### No: 3

The entire Encyclopaedia Britannica is banned in Texas because it contains a formula for making beer at home. Also in Texas, it is illegal for one to shoot a buffalo from the second storey of an hotel.

**No: 4** in Alabama it is illegal to wear a fake moustache that causes laughter in church.

**Following on from the last issue a hopefully interested reader spotted my item on personal wikis and informed me that:-**

*The only problem with having an online wiki is that it is only available while you are online, so if you were on a train, say, it might not be possible to access it! One alternative is to use a personal wiki that doesn't need a web-server - it runs completely on your own computer/laptop.*

**He gave me this link "http://www.tiddlywiki.com/". So a very big and rather smiley congratulations goes to Gerald Connolly for sending hallmarkyouthpage the first ever e-mail, thus putting him at the head of the "imaginatively named young persons page readers-send-in-some-content leader board."**

#### **Events in November;**

**All Saints Day**, a Christian holy day, is celebrated on November 1st.

**November 5th** is of course Guy Fawkes Night, the anniversary of the failed Gunpowder Plot.

**Remembrance Day** is celebrated on November 11th to commemorate World-War-one and other wars. **Christopher Columbus** discovered Puerto Rico on November 19th 1493.

**Thanksgiving** is observed on the fourth Thursday in November in America and Puerto Rico. **For Western Christians** Advent (from the Latin word adventus, meaning "coming") usually begins on a Sunday during the last week of November.

#### **Interesting facts**

1.

The average lead pencil will draw a line 35 miles long or write approximately 50,000 English words.

2.

The recognised difference between a cake and a biscuit is that a cake goes hard when stale and a biscuit goes soft when stale

3.

Women blink nearly twice as much as men.

4.

The elephant is the only mammal that cannot jump.

5.

"Rhythm" is the longest English word without a vowel.

6.

The word "queue" is the only word in the English language that is still pronounced the same way when the last four letters are removed.

7.

Coca-cola would be green if colouring weren't added to it.

8.

more people are allergic to cows milk than any other food.

9.

earth is the only planet not named after a god.

10.

some worms will eat themselves if they can't find any food.

If you are running any classes for children or teens, please send me some information so we can start a 'What's on for kids' section. [hallmarkyouthpage@yahoo.com](mailto:hallmarkyouthpage@yahoo.com)

#### **Home-Education - "the truth!"**

I, as home-schooler myself, believe it is about time that some of the myths about home schooling were explained.

#### **Myth 1**

**It is illegal.**

The law says that a child has to receive an education whether in school or otherwise. I chose otherwise.

#### **Myth 2**

**Home-schoolers do not socialise.**

Now this is not true. Actually when I think about it I get to mix with people of all ages, race and social backgrounds every day. Schoolchildren are pretty much stuck with kids of their own age.

#### **Myth 3**

**Home-schoolers are stuck at home.** Just because the word 'home' is in the name does not mean that we do 'school' at home. I am out every day with my friends enjoying sports, doing my classes, visiting museums (when it's quiet) and generally having a fun time with my friends.

#### **Myth 4**

**Home-schoolers don't do exams.**

It is perfectly possible to take exams (GCSE's and IGCSE's) at examination centres all over the country as an external candidate. Our nearest centre is in Stone near Aylesbury. It is possible to take exams when ready instead of all in one year.

For more information on education 'otherwise', you can e-mail questions to me or Google search 'home-education'.

[hallmarkyouthpage@yahoo.com](mailto:hallmarkyouthpage@yahoo.com)

# Windmill Under 5s

Continued from page 8

outside learning, free-flow play, shapes and maths feature as part of the daily routine, as well as letter and colour of the week. The children have loved experimenting with the play dough dyed in the colour of the week but the highlight for me so far this term has to be igloo making (for the letter I) ingeniously thought out by Liz from old ice-cream tubs and a mass of shaving foam! Other highlights included dinosaurs in green slime, numerous culinary delights, trips to the park and a visit from the photographer.

The next half term will see further excitement as the children learn about fireworks, Diwali and of course getting ready for the ever popular **Christmas Play on 15<sup>th</sup> Dec**, finishing the term with a party and **visit from Santa on the 19<sup>th</sup>**. Sadly this term we say goodbye to pre-school assistant Tracy Sargent and we wish Sue all the best with her forthcoming baby as she goes on maternity leave at Christmas – we look forward to seeing her back at Windmills next year though!

The fundraising focus for this year is to put a roof over the outside play area so it can be used come rain or shine! The fundraising team have been busy meeting this half term to plan a host of activities for both children and parents / carers. Pre-schools are self-funding and committee-led and therefore rely enormously on the generosity and good will of parents and the wider community to support them. Children will enjoy dressing up in their scariest costumes for the Halloween party on the 24<sup>th</sup> Oct. Parents are already looking forward to a **Pampered Chef evening on 2<sup>nd</sup> December** and a Car Boot sale is being planned for February, so plenty of opportunities for cake / coffee and raffle ticket sales all to go to a good cause!

Come and get a taste for Windmills at **St John's School on Saturday 15<sup>th</sup> November**. New pre-school assistant Jo will be running craft activities for the under 5's during their craft morning. If you are considering a pre-school for your child, come to our **Open Morning on Thursday 20<sup>th</sup> November 9.30-10.30** or call our administrator **Paula Cunningham** on **07502 198 405** / email [admin@windmillunder5s.co.uk](mailto:admin@windmillunder5s.co.uk) to arrange a convenient time to visit. We are now registering admissions for 2010! All children at Windmills spend quality time with their key worker and French is now being introduced during the morning session. Lunch club runs daily from 11.45-1.15pm. If you like the sound of what you have just read, then take a look at our website

[www.windmillunder5s.co.uk](http://www.windmillunder5s.co.uk) to find out more and come and see our happy and friendly pre-school for yourself!

**Zoe Glenister, Co-Chair**

## Letters to the Editor

### THANK YOU FROM CON BAKER

Just to say thank you to all my relations and friends for all the presents, flowers and birthday cards, all 205 of them.

Thank you.

Fun being 100 if you are healthy.

**Constance L Baker**

### VILLAGE FACILITIES PUBLIC MEETING - VOLUNTEERING TO HELP STAFF SHOP

My partner Lindsay Bell and I came to the meeting at the Sports Club on 16<sup>th</sup> October and listened with interest to the discussions. We are new arrivals in the village, having moved just a month ago into "Windyridge", opposite the Whip, although we have come only a short distance to get here, from Risborough. We initially wanted to stay in the town for various reasons, amongst which was a recognition of the approaching inevitability of the transition from active late middle age to official Old Age and the associated mobility problems and difficulties with shopping and generally getting about, but the existence of the regular bus service reassured us that Lacey Green would be OK for us.

We were disappointed to find that the village shop had closed and so intrigued by your plans to re-invent it along with the other schemes to ensure that community life continues. We would like to let you know that we support these aims.

We do not see ourselves in the role of "champions" but would certainly be willing to join a team of volunteer shopkeepers for a few hours a week, with the proviso that from spring to autumn our lifestyle puts more constraints on our time than in the winter months.

We landed in the village too late to complete the questionnaire but I hope the above moves the "fors" another percentage point in the right direction.

Regards from **Bob Gosling**

# World's Biggest Coffee Morning for Macmillan Nurses

## MORNING EVENT AT COLLINS FARM

On 26th September I hosted a *World's Biggest Coffee Morning for Macmillan Cancer Support*. I was so pleased with the help that I received from members of our villages who gave up their time in preparation for the day and on the day itself. I have to admit that I was not so well prepared as I was trying to be ready for breakfast for after school drop off with croissants for 9.15am.

When I advertised the event I didn't know that the school Harvest Festival service was going to be at the same time. Anyway, after considerable fluster, the day turned out to be one of the best I have had. 32 people attended and we raised £437.40. Although we had planned to finish at 3pm, a group of us were still around at 4pm having honestly had such a laugh. I was glad to have the opportunity to get to know those who helped and attended the event. Some of us had lunch together and I believe we really had a good time.

Thank you so much to all of my helpers and to everyone who attended and well done for raising such a good sum for Macmillan Cancer Support.

I look forward to more village events.

**Lizzie Thomas-Davies**

## 2-4pm AT SPORTS & SOCIAL CLUB

The sun shone in Lacey Green for MacMillan Cancer Support's *World's Biggest Coffee Morning* on Friday 26<sup>th</sup> September. Cups of tea and coffee were enjoyed while browsing the stalls of jewellery, cards, raffle and competitions at the Sports and Social Club. Piles of cakes were kindly donated, and polished off when the children joined us after school. The children were offered face painting during breaks from play in the spruced up Windmill Under 5's play garden and new summer house. The room was soon filled with butterflies, tigers and spiders. A total of £92.40 was donated to help improve the lives of people living with cancer. Well done to everyone who helped organise and run this fun afternoon, and special thanks to everyone who supported this event.

**Cathy Tyrrell**

**17 Eastlands, Lacey Green. 01844 275561**

# Lacey Green Singers

## CONCERT AT ST JOHN'S CHURCH

Sat 18 Oct



The programme proclaimed an evening of music by George Frederick Handel (plus a single piece by Bach). Jane Brown explained that it was chosen on the basis of music they enjoyed singing, and the audience were invited to share in the choir's enjoyment. The applause spoke for itself. There were occasional diversions from the musical path, but the audience were agreeably treated to a selection of familiar favourites, ending in the triumph of the *Hallelujah Chorus*.

James Moorcroft gave a pleasant rendering of "Silent Worship" (Did you not see my lady?) and instrumental support came from Thelma Malpas and Jo Penhale (piano) and Graham Nash (organ).

It was an ambitious programme that was not assisted by the church's poor lighting. Jane and the choir deserve our appreciation for their contribution to village life and the pleasant socialising that followed.

**Brian Panter**

## Parish Council

I am pleased to report that all the Parish Councillors are still taking an active part in our village. However, we are still **looking for a councillor** to represent the Lacey Green ward. The position has remained vacant for 6 months now, and despite notices in the local newspaper and requests in previous Hallmarks, no one has come forward. Being on the Parish Council is not an arduous

task, a monthly meeting in either Speen or Lacey Green, and the knowledge that you are working for the good of your fellow villagers. We are all volunteers and we would welcome responses from anyone in the village

We are carrying on a continued maintenance programme in the villages. The **bus shelters** have been repainted and tidied up, although the bus shelter outside the village hall is still frosted, we are looking to the suppliers of this shelter to comment on the state of the perspex and will endeavour to have this clean/replaced as necessary.

**Deep Pit Pond in Kiln Lane** has a maintenance works done, the pond banks have been tidied up, trees trimmed and all that remains is for the railings to be replaced. This work has all been carried out in accordance with the environmental study recommendations that we carried out earlier. We are now looking to plant the pond, again in accordance the environmental recommendations.

We have been advised by Bucks County Council that the **mobile library** that calls on the village on alternate Thursdays, is actually being upgraded and a bigger and better bus will now call in the Village Hall car park on alternate Mondays. The Monday Library promises to have more books and CD's, so please don't let the villagers that use the library down, more people need to use this service to protect it. We hope to have definitive diary dates and will publish these in future issues of Hallmarks' Diary Dates. For the time being please watch the various village notice boards for dates as we will not have them before this issue goes to press.

We are looking to upgrade the **Parish Playground** in the Sports Field of Lacey Green Sports Club, to cater for a wider age group, and we would welcome any ideas or suggestion from either parents or children/teenagers on what they would expect to find in the playground.

The **speed limit review** is in its final consultation state, and we have put forward the representations made by parishioners. Let's hope BCC take note.

We are also active members of NAG (**Neighbourhood Action Group**) and attend meetings, and hope to receive training soon on operating the new speed detection devices, and we hope that this will deter villagers and others from speeding through our village. Registration numbers of speeding vehicles are recorded and warning letters will be sent by Thames Valley Police.

The Parish Council has been notified by WDC that a **random survey** is being carried out throughout the district. We would urge any residents that receive this survey to complete and return it. It really is gratifying to

those who prepare these surveys that they receive the responses. I can only say **how pleased we were** to receive so many responses from our own **village questionnaire**. It has really given us a definitive way forward.

One last request. If any villagers, walking any of the public footpaths or bridleways in the parish, find debris/trees blocking their way, could they please contact a member of the Parish Council or our **Clerk Mrs S Griffiths**. Mrs Griffiths can also be contacted should you wish to attend any Parish Council meetings with or without a view to being co-opted onto the council:

**Mrs S Griffiths, Westfield Cottage, Westfields, Whiteleaf, Bucks HP27 0LH**

**Cathryn Davies, Chairman of Parish Council**

## Bucks CC Adult Social Care

Within the county of Buckinghamshire, we have been split into 19 local community areas. In these local areas, Buckinghamshire County Councils Adult Social Care department is developing a range of new initiatives to enable greater access to Social Care Services and to build closer relationships within the local community.

**SOCIAL CARE SURGERIES** are a place for members of the public to ask advice and guidance for themselves, family members or even a member of their community, on issues related to Adult Social Care. A surgery will be held at **Princes Risborough Information Centre on 4<sup>th</sup> December 2008 from 10am – 1pm**. Please feel free to drop by and see what help and support we may be able to offer you, a family member or a member of your community. Also present at the surgeries is your local Police Community Support Officer offering crime prevention and reduction advice.

If you would like to have additional information please contact

**Karen Adamson on 01296 383847 or**  
[kadamson@buckscc.gov.uk](mailto:kadamson@buckscc.gov.uk)

### TRUE QUOTATION:



"He's so mean he'd steal a dead fly from a blind spider"

# Public meeting to consider community facilities

About 40 people attended the public meeting held at the Lacey Green and Loosley Row Sports Club on Thursday 16 October. The meeting, chaired by Cathryn Davies, was called to give feed back on the resident's survey carried out earlier in the summer. Gill Withers, from the Plunkett Foundation, presented the results. She started by saying that she was pleased with the very satisfactory return rate of 51 percent, which she felt would be accredited, and acceptable to Wycombe District Council, who sponsored the survey arising from a Section 106 planning obligation.

She went on to say that, whilst 71 percent of households were happy with the current range of facilities and services available, clearly there was a wish for other services and facilities to be returned to the villages. The most significant and outstanding one was for a shop, where 91 percent of the respondents said that they would use a shop either often or sometimes. The three other areas of demand were for social activities, sports facilities and youth needs.

The separate youth questionnaire had a 30 percent response rate, and new activities showed sports and a youth club to be the most wanted.

Prizes for the best suggestions by both adult and youth were awarded. The adult winner was Paula Cunningham, who wanted a friendlier pre-school playground and the youth winner was Lucy Hewson, who proposed a regular film night. A random number prize, simply for completing the questionnaire, was won by Maggie Robbins, who has donated her prize to the Under 5's play group. It was agreed that all suggestions should be taken forward as soon as possible. It was thought that the film night could be set up relatively quickly.

There was an open discussion at which quite diverse views were expressed. Gill stressed the importance of having village champions to actively promote and take forward the most significant of the identified needs as projects. Various views were put forward by those attending on the likely success or otherwise of volunteers becoming involved and running a shop. So far as the shop was concerned, it was noted that there were several possible options for setting this up, ranging from a portacabin in the car park at the Millennium Hall to a more comprehensive complex including other facilities similar to the existing facility in Speen. It was agreed that none of the options should be ruled in or out at this early stage. What was required was the endorsement of the meeting that these options should be taken forward

through a feasibility study to identify the most likely course for success. After further discussion, this was agreed by the meeting.

Paul Rogerson said that a Parish Project had recently been promoted to a working group as part of the Local Strategic Partnership. Action was required to bring back services to the rural areas, which included a development, on an exception basis, to provide the shop, some affordable housing, a medium sized meeting room, and space for other facilities such as a surgery together with some private housing.

It was noted that the Community Plan Steering Group could provide an existing mechanism for carrying out further work, and that sub-groups had been set up to deal with particular projects. Volunteers could become involved with any project in which they had a particular interest. It was also agreed that a further feedback session should be arranged for early next year, when the work on the various options had taken place.

**Tony Molesworth**

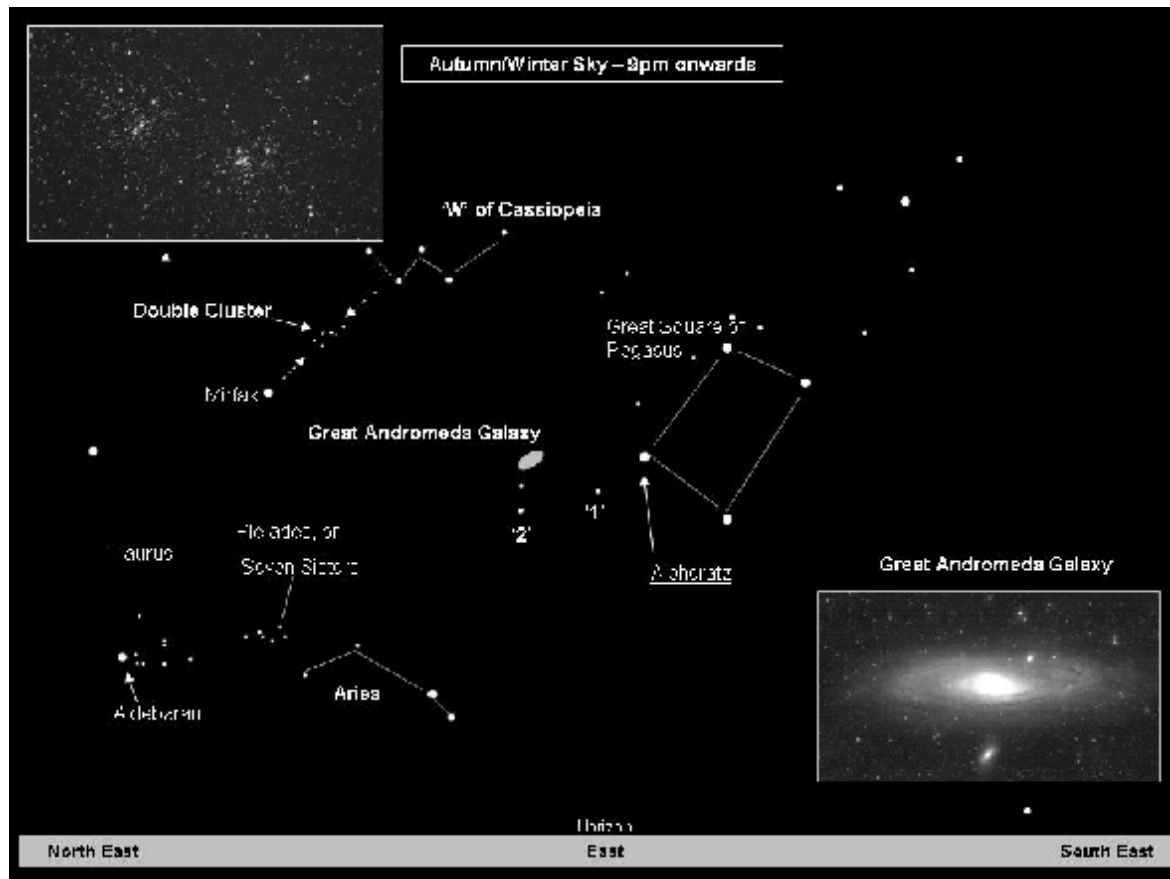
## FOOTNOTE BY EDITOR

At the meeting, some ladies questioned strongly whether there would in fact be enough custom for a shop to make it viable. I am not personally convinced of the support level in practice of a shop in our small village, with its reliable 20 minutes frequency bus service to Princes Risborough, Aylesbury & High Wycombe. Speen shop's opening hours have recently been reduced, despite the lack of any bus service to any competitive shopping. I also made the point that I ask George Crombie whenever I go (deliberately about 1/4 hour before he closes) how many customers he had at each of the two Post Office mornings – usually between 4 and 8, occasionally up to 12. Actual level of support is the test.

I also made the point that anyone tackling the planning of a shop, even with voluntary unpaid labour, would need to do some advanced detailed realistic market research as to who in fact would buy what how often. Of course, with a more positive approach, these days a volunteer could take a laptop or some reading matter to occupy his/her time fruitfully while waiting for the next customer. There would also be the social benefit of working in a shop. You will see in *Letters to the Editor* a letter from a newcomer couple volunteering to work in a new village shop. If you would also like to volunteer to help staff it, please let me know (see p1 for contact details).

# Walking is free, healthy & enjoyable!

**DID YOU KNOW?** 1 in 3 of us is not active enough to stay healthy. We should all aim for **30 minutes** of moderate activity , such as a brisk walk, **at least 5 days a week**. You can simply walk your choice of route, join the Happy Wanderers (only twice a month, of course) and/or, to learn of other nearby guided walks, contact Bucks County Council's *Simply Walk* people on **01494 475367**, email [simplywalksa@buckscc.gov.uk](mailto:simplywalksa@buckscc.gov.uk) or visit their website [www.buckscc.gov.uk/rights\\_of\\_way](http://www.buckscc.gov.uk/rights_of_way) .



**D**id you know that you can see another galaxy with the naked eye – if you look in the right place? This is the famous Great Andromeda Galaxy, or Messier 31 (M31). It is a spiral galaxy like our Milky Way and roughly the same size. But it's 2.4 million light years away and is the most distant object visible to the naked eye. However, to find it the first time, it's easier to use binoculars and then see how good your peepers are by looking at the galaxy without the 'bins'. This requires a minute's concentration – but it's worth it. When you do spot it, it's mind boggling to think that the light reaching your eyes started its journey from Andromeda when humans were just learning to walk on two feet.

Firstly, make sure you are standing away from any bright lights and that the Moon is not lighting up the sky. Also, allow your eyes to get dark-adapted – so look at a dark sky for a few minutes if you've just left a lit room. Focus the binoculars on any bright star so it appears as a pinprick of light. Then begin 'star hopping' – visually jumping from star to star. Our starting point is the Great Square of Pegasus – a large square of four stars wider than your outstretched fist in the eastern sky. It may help to locate the 'w' shaped group of stars higher up (see diagram) and then look down and right to the Square. Pick out the bright star at the top left of the square (Alpheratz), and then hop left and down slightly (by about

half the width of the square) to the next brightest star (1 on diagram). From here, arch left by about the same distance to the next brightest star (2). Then go up and right by the smallest hop so far, to a dimmer star, then continue in a line upwards to another fainter star. Within the same field of view through binoculars, above and to the right of that star is a grey-white ghostly 'smudge'. That's the Great Andromeda Galaxy! The spiral is tilted as we see it and binoculars show its elongated shape and brighter centre. The smudge is in fact a 'star city' of about 250 billion stars. Over time, it will appear larger as it is due to merge with our own galaxy in a few billion years' time. The night sky will be changed forever!

So, that's a fine astro-feather in your cap. Now for another (still with binoculars). This is the beautiful Perseus Double Cluster of stars. Find the 'W' shape again and following the W's inner left slant downwards (see diag) until you arrive at a bright star (called Mirfak on diagram). Halfway between the 'W' and Mirfak lies the Double Cluster. They appear faint to begin with, so be patient and you'll a superb sight as the clusters brighten into view. These clusters are very much part of our Galaxy, so are 7,000 light years away, compared to the 2.4 million light-year trek to Andromeda.

# Lacey Green & Sports & Social

# Loosley Row Club

## CRICKET SECTION



This report begins with the 2nd XI. Why? Because, as the TV ad says, you're worth it. I'll start with the Reserves K.O. Cup Final. The lads were magnificent - although when they only reached 136 batting first I feared the worst, as we know that Hughenden Valley 2nds can thrash the best of bowling. But this time it was our lads bowling and, particularly, their superb all-round fielding that brought the cup to the Green. Hughenden can't cope with excellent bowling by Simon Williams and Tim Page and the Green's tigerish fielding. Everyone was a hero. Skipper Simon Williams was named *Man of the Match*.

The 2nds have now appeared in the final 14 times since the competition began in 1975, winning it 7 times. A great record.

Best batting average for the K.O. Cup was Jon Dell with 34 and best bowling went to Simon Williams with 9 wickets for 9.22 runs each.

The 2nds had a good season in the league, too. Out of 15 matches - 3 were lost to rain - 7 were won, 5 lost, 1 match was tied and they had 1 winning/draw and 1 losing/draw. They scored 265 points and finished 4th in the league table behind 3 quite strong teams. A good effort.

### Lacey Green Reserves League Batting Averages 2008

Name	Innings	Not outs	Runs scored	Top score	Average
D Saunders	8	4	206	55 NO	51.50
T Page	7	0	255	71	36.43
S Williams	13	0	301	104	23.15
D Marshall	10	1	204	60	22.67
P Smith	9	4	106	18 NO	21.20
K Kelloway	10	0	183	53	18.30
J Dell	6	0	89	55	14.83
R Brown	10	4	58	20	9.67
M Williams	10	4	39	16	6.50
R Mahajan	7	0	24	6	3.43
M Janes	8	4	11	4	2.75

6 Innings or more to qualify

### Lacey Green Reserves League Bowling Averages

Name	Overs	Runs	Wickets	Average
S Williams	123	365	40	9.12
T Page	82	270	19	14.21
J Dell	65	210	13	16.15
R Brown	106	274	13	21.07
M Janes	22	147	2	73.5

6 Innings or more to qualify

Most catches for the league season was P Smith with 7; M Janes was second with 6.

Of course, figures never tell the full story. Dave Sanders 55 n.o. to win a match that looked lost was a terrific effort. And his 34 n.o. to save the game in the penultimate 1st team match ranked with the best. To average more than 50 is a tribute to his determination

and dedication. Tim Page, Derek Marshall, Paul Smith, Kevin Kelloway and Jon Dell all had good averages – and these figures do not include the matches they played in the 1<sup>st</sup> XI. The highlight, for me, has to be Simon Williams' century in the final match against the old 'enemy' Prestwood. He started cautiously but once his eye was in, he flayed the opposition bowling. Most enjoyable.

Now for the 1<sup>st</sup> XI. Again not a very successful season. 2 games were washed out, 5 won, 6 lost, 1 winning/draw and 4 losing/draws. They finished 7<sup>th</sup> with 201 points. There were some highlights, of course. Duncan Palmer came out from behind the wickets to take over as captain and led by example, batting and fielding with great determination. James Shrimpton is now showing the talent with the bat we know he has, while Jack Hedgeland is bowling with good pace and accuracy.

Several of the team put in good performances, although consistency is a problem – not surprising when we can hardly turn out the same team two weeks running. Ah well, there is always next season. I have no figures for the 1<sup>st</sup> XI, I'm afraid, to show individual performances. The problem is that, while the 2nds have an excellent regular scorer in Christine, the 1<sup>st</sup> rely on anyone willing to have a go. Hence the lack of information.

Now it just remains to thank the umpires, the scorers and the lads who keep the ground so well. I'm not sure if we can have a Happy Christmas and New Year (looking at the world around us) but at least hope we can all enjoy good health.

**Geoff Gomme**

## Lacey Green Productions

### Good news for 2008



All the tickets for our dinner theatre at the end of November have been sold and we are putting on an extra "Preview" performance. For this "Preview" we will, unfortunately, not be able to

serve dinner but nibbles will be available, the bar will be open and hopefully this extra performance will help us to raise even more money for our charities. Tickets for the "Preview" should be booked in advance by calling either 01844 347518 or 01844 344207.

The "Preview" performance is on Thursday, November 27<sup>th</sup> with the dinner theatre performances on Friday and Saturday, November 28<sup>th</sup> and 29<sup>th</sup>. All performances are in the Village Hall – doors open at 7.30pm for an 8pm start.

The evening is titled "**Tangled Web**" and there are 3 one act plays which will give you comedy, confusion and suspense.

### Even More Good news for 2009

**Themed fun evening** at the Village Hall on Saturday, January 31<sup>st</sup> 2009. This sees the return of the LGP Themed Evenings with dinner, entertainment, audience participation and our first chance in the New Year to raise money for charity.

It is the centenary of the writing of "**The Wind in the Willows**" and the Village Hall will be decorated to remind us of Toad Hall or perhaps Ratty's riverbank home. We hope that you will all join in the fun by disguising yourselves as weasels, stoats, occasional ferrets, washerwomen, judges, toads, badgers, moles etc (the possibilities are endless). Dust down those canary coloured carts and "poop, poop" your way down to the Village Hall. Tickets should be booked in advance by calling either **01844 347518** or **01844 344207**.

### Theatre at Home – "**Top Girls**" by Caryl Churchill.

We shall be performing this award-winning two act play as part of our 4<sup>th</sup> year of Theatre at Home at "Chipko", Parslows Hillock on March 13<sup>th</sup>, 14<sup>th</sup> and 15<sup>th</sup>. "Top Girls" has an all female cast and was first produced in London and New York in 1982. It shows the challenges facing women in both the business world and society at large. The central character, Marlene, has a price to pay for her success in business and the play illustrates this with both contemporary and historical references.

Performing this play will have many challenges for us, not least because Caryl Churchill writes overlapping dialogue. Although this is exactly how we normally speak, it is not how plays are usually written. She also plays about with time and mixes fantasy and reality. "Top Girls" is a fascinating play for both audience and performers.

Once again tickets should be booked in advance by calling either **01844 347518** or **01844 344207**.

# Loosley Row & Lacey Green Horticultural Society

## OVER THE GARDEN FENCE



Despite a miserable Summer we had a well supported and colourful Show, with the trophies being well spread. Alison Shreeve won the John Plowman Cup for Vegetables, and also the Hughenden Cup for the highest total of points in the Vegetables, Fruit and Flowers sections combined. John West won the Floral Cup. The Marshal Cup for Fruit went to Vic Lindsay and Laura Chapman won the Domestic Salver. The



Jubilee Cup for the entrant who had not previously won a trophy was Doris Burnett, our Treasurer's mother. Joyce Walker's "St Clements" entry in the floral section was awarded the Bill Cleaver Award

for best exhibit in the show.



The following day, 9 of us pulled on our Wellingtons for a guided walk around Wren Davis' farm at Prestwood. The farm is registered as organic with the Soil Association and supplies carefully raised and prepared beef to a well

known and respected shopping chain and, by contrast, grows several varieties of wheat, which is sold as flour at local farmers markets. It was a pleasant walk, and a very interesting insight into farming today. Followed by a chat, coffee and home made bread and butter to die for! We will do this again in the Spring, if there is interest.

The Society entered the Bucks Association of Horticultural Societies Autumn Show on 4 October for the first time, as far as I am aware. Seven or eight of our Members contributed to our entries in the three classes of Horticulture (a combination of veg, fruit and flowers), Domestic, and Floral display. It was good fun on the Saturday morning, collecting the possible entries and then at Alison and Adam's house deciding what combination should be entered. None of our members involved had even been to one of the Shows before, and the standard proved to be as high as we had expected. One Society displayed four foot carrots and seven foot leeks, fresh from the RHS Show at Malvern, but we were quietly pleased to find that they were only awarded Third prize, because the entry was made up with some rather non descript flowers. We were clearly some way off the standard in horticulture, but we were not so far short in the other two, and with a bit of "show craft", we could have been in contention. We will try again next year. And at least we looked as though we were enjoying it!

On 12 November, we have the Pumpkin Supper and Social evening at 8.00 in the village hall. We will be judging the pumpkin competition and having a hot supper, and a quiz. For catering purposes we need to know in advance how many are coming. Tickets have sold very well at the time of writing. If you do see this article just before the day, and would like to come, please give me a ring. We could accommodate a few more with just a couple of hours notice. Tickets are £3.50.

The next talk will be on Wednesday, 21 January, 2009, at 8.00pm in the village hall, when the subject will be "Britain's Best Gardens".

As always, new members are very welcome - just come along to our meetings, or phone me. A number of people have expressed an interest lately, and we would like them to take the next step and join the Society.

**Terry Fendom, Chairman. 01844 342636**



# News from St John's Church

(Rector – the Reverend Denise Critchell)

Serving the village communities of Lacey Green, Loosley Row and Speen.

## Regular Services at St. John's church.

### SUNDAY

8.00am	Holy Communion(1662)	1 <sup>st</sup> , 2 <sup>nd</sup> , & 4 <sup>th</sup> . Sundays
10.00am	<b>All age Worship - Communion</b>	1 <sup>st</sup> Sunday of the month.
10.00am	<b>Parish Communion</b>	2 <sup>nd</sup> , 3 <sup>rd</sup> , 4 <sup>th</sup> , (&5 <sup>th</sup> ) Sundays
6.00pm	Choral Evensong	1 <sup>st</sup> Sunday in the month

**Junior Church** at 10.00am – all services other than 1<sup>st</sup>, held in upper room.

Details from Jenny King – 01844-343910

**Youth group** meet the 1<sup>st</sup> Sunday in the month at Collins' Farm

3<sup>rd</sup> Sunday, service in Church. Both Sundays for fun, friendship, and interesting activities. Meet at 5.15pm – both groups are well attended and new members are very welcome. 01844-342173.

### TUESDAY

9.30am.	Communion Service in Lady Chapel at St. John's.
2.00pm	Toddler Praise – Tuesday afternoons during term time.

### WEDNESDAY

10.30am	Team Communion Service at St. Mary's church, Princes Risborough.
---------	--

Full details of services and more information about St. John's church are published in the monthly Parish Magazine 'Viewpoint' and displayed on the notice board outside church. PLEASE CHECK those reference points FOR FURTHER DETAILS OF CHRISTMAS SERVICES

## On going News

The Harvest Bring and Share lunch was again very successful with approximately 90 plus members and friends enjoying many various delicious dishes. There was a complete feeling of "All is safely gathered in, and now we can relax, and enjoy being with our friends". It was a very special day for those who were baptized – Maureen, Cathryn, Barney, and Priya- may you continue successfully on your spiritual journey.

Also blessings to the special members who were Confirmed in Wendover Church by the Bishop on Oct 7<sup>th</sup>. May you also find your true pathway confident in God's Love and Grace.

House groups continue to thrive – Liz and Hugh are welcoming friends once again to Collins Farm to begin new studies and discussion every other Wednesday, starting with a bang on Nov. 5<sup>th</sup>.

## Future dates for your Diaries

Lest we forget....**Remembrance Sunday 9th November 2008**

**30th Nov** at 6pm. We are hosting 'Christians Together in Risborough Churches' - an Advent Carol Service.

**Friday 5th December** – A **QUIZ** in the evening time and place to be announced. Get your thinking caps on, round up brainy family members, phone a friend.

**CHRISTINGLE service** – remember ? all those oranges with red ribbon & fruits on cocktail sticks - very symbolic – come and find out why on **Sunday 7th Dec** at 10am. Organised again by the T.D.group and Youth church.

**Sat. 13<sup>th</sup> Dec Christmas Coffee Morning** to be held in the Church from 10.00am to 12.30 pm. Come and spur on that Christmas Spirit.

**13<sup>th</sup> January 2009** – a social evening to sign up for an Alpha Course. This is to discover more about the life of Jesus, to learn more, to make new friends and discuss any thoughts you may have puzzled over in the past. Nicky Gumble – a preacher - has produced DVD's which may further your understanding or at least prompt some of those existential questions!

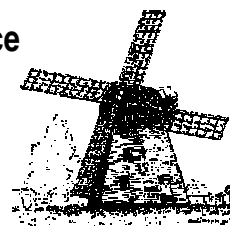
Many many Congratulations to Jackie and Rob, who were married on October 25<sup>th</sup> and drove off into the sunset to live happily ever after. Our prayers and blessings are with you in your new lives together.

Come and join us at St. John's, enjoy our Church life, be Blessed, and celebrate Jesus' Birthday with Love and Peace to all.

# What's Happening in Lacey Green & Loosley Row ?

**A LIST OF REGULAR ACTIVITIES to which you are welcome. Others take place but are subject, for example, to membership for which there is a waiting list**

**All events at Lacey Green & Loosley Row Millennium Hall unless otherwise specified**



WHO in alphabetical order	WHEN, WHERE if not in Millennium Hall, and OTHER DETAILS	CONTACT	01844 *
Adult Learning – Furniture Restoration	Thu mornings, term time	Bucks office	0845 - 0454040
Happy Wanderers' Walking Club		Ronnie Lewin	274961
- normal walk (5-6 miles)	10.30am. Starting place informed on previous walk		
- short walk (2-3 miles)	2nd Wed. 10.30am, Millennium Hall car park		
Horticultural Society	3rd Wed of Jan, Mar, May, Jul, Sep, Nov. 8pm	Terry Fendom	342636
Jazzercise – exercises with lively music & company	Tue evenings	Sue Morris	01494 - 813968
Jingle Tots	Baby to 5 years. Songs, action rhymes, musical instruments, refreshments, playtime. Fridays during term time.	Jenny Stothard	344441
Karate	Mon evenings	Richard Peace	07768 – 896078
Kinder Gym	Pre-school Gym Classes. Fridays during term time	Jenny Stothard	344441
Lacey Green Productions	Various kinds of theatre, some with delicious food	Val Brookhouse	344207
Lacey Green & Loosley Row Sports & Social Club	Various activities	Jane Oakford	346295
Lacey Green Singers	Thu evenings, term time	Jane Brown	346071
Lacey Green Windmill	Open Sundays and Bank Holiday Mondays 2.30-5.30pm beginning May – end Sep. See p44.	Michael Hardy	275871
Loosley Row & Lacey Green WI	2nd Thu, except Aug. 2pm	Jill Baker	275442
Pilates Classes	Tue mornings	Sue Croxford	346656
U3A	4 <sup>th</sup> Wed afternoon of month	Roger Smith	01494 - 484182
Whiteleaf Bowmen	Wed, Thu & Fri evenings, Apr to Sep	Dave Evans	01494 - 538235
Windmill Under 5's Playgroup	Mon-Fri 9.15-11.45am, lunch club 11.45am – 1.15pm At Sports & Social Club (next to St John's School).	Paula Cunningham	07502 198 405
Windmill WI	1st Wed of month except Jan. 7.45pm	Stella Boll	347268
Yoga Group	Mon mornings during term time	Annie Silverman	343643
81st Over 60's Club	1st Thu of month except Jan & Aug (was 1 <sup>st</sup> Tue) 2pm	Carole Knight	01296 – 614113

\* Except where shown otherwise

**See page 44** re Lacey Green Maize Maze and Lacey Green Post Office

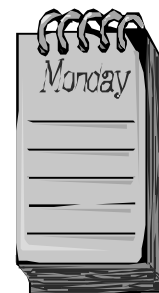
Long winter evenings getting you down?  
Why not join a local group or two?  
Activate your brain - it's healthy for you!



# Village Diary

November 15 – February 15

All events at Lacey Green & Loosley Row Millennium Hall unless otherwise specified.



Nov 30	Happy Wanderers' normal walk #	10.30am
Dec 3	Windmill WI (1st Wed of month)	7.45pm
Dec 4	81st Over 60's Club Christmas Party (1st Thu of month excl Jan)	2pm
Nov 27	Preview for Lacey Green Productions " <i>Tangled Web</i> "	7.30 for 8.00 pm
Nov 28		
& 29	Lacey Green Productions Dinner Theatre " <i>Tangled Web</i> "	7.30 for 8.00 pm
Dec 10	Happy Wanderers' short walk (2nd Wed, Village Hall car park)	10.30am
Dec 11	Loosley Row & Lacey Green WI (2nd Thu, except Aug)	2pm
Dec 21	Pre-Christmas Astro talks by Chris Dignan (see Village Notice p3)	6.45 for 7.00pm
	Horticultural Society (normally 3rd Wed of Jan, Mar, May, Jul, Sep & Nov)	8pm
Dec 28	Happy Wanderers' normal Christmas walk #	10.30am
Jan 7	Windmill WI (1st Wed of month)	7.45pm
Jan 14	Happy Wanderers' short walk (2nd Wed, Village Hall car park)	10.30am
Jan 8	Loosley Row & Lacey Green WI (2nd Thu, except Aug)	2pm
Jan 25	Happy Wanderers' normal walk #	10.30am
Feb 4	Windmill WI (1st Wed of month)	7.45pm
Feb 5	81st Over 60's Club (1st Thu of month excl Jan) (was 1st Tue)	2pm
Feb 11	Happy Wanderers' short walk (2nd Wed, Village Hall car park)	10.30am
Feb 12	Loosley Row & Lacey Green WI (2nd Thu, except Aug)	2pm
Jan 31	Lacey Green Productions evening with dinner, fun, audience participation, entertainment & the theme of "Wind in the Willows "	TBA

## SOME LATER DATES FOR YOUR DIARY

Feb 22	Happy Wanderers' AGM, picnic & local walk	
Feb 28	Windmill Under 5s Car Boot Sale	1pm
Mar 13,	Lacey Green Productions theatre at home performances of "Top Girls"	
14 & 15	by Caryl Churchill	TBA
May 10	National Mills Day, when our windmill will run, subject to weather	
Sep 10		
- 19	Speen Festival 2009 at various venues in Speen	To be decided

\* Members of the public are always welcome to attend these meetings

# Starting place informed on previous walk - usually within 1/2 hour's motoring of village

**LACEY GREEN POST OFFICE** is open in Village Hall 9am-12 noon Mondays & Thursdays for all services except Road Fund Licences (vehicle licences).

~~~~~  
**CLOSING DATE FOR COPY FOR THE SPRING EDITION**  
**January 17th 2009**

## STOP PRESS

## IN MEMORIAM

**We have just heard of the death of LADY BATEMAN, who has done so much for our villages. We hope to have an Obituary in the next edition & on our website.**

Published quarterly by the Village Hall Management Committee  
Printed by Risboro' Printers Ltd, Station Parade, Princes Risborough 01844 344827