

HALLMARK

The Lacey Green and Loosley Row Magazine



October 2020
Issue 256

Chris
Roberts

£3.00 where sold separately



Stallwood Landscapes & Garden Management

2010 Hampton Court RHS silver-gilt medal winner

All aspects of hard and soft landscaping undertaken
Garden restoration and Maintenance
Hedge and tree care
Qualified horticulturist with 15 years experience
Quality as standard

For a free quote and advice call Alex on
07725 743857 / 01844 344905

ASTON HEARING

EUROPEAN AUDIOLOGIST

OF THE YEAR 2016 · 2019

Thame 01844 396057
Amersham 01494 733840

www.astonhearing.co.uk

For All your Ear and Hearing Needs



*Thank you Hallmark and the Lacey Green and
Loosley Row communities*

*Like so many small businesses - 2020 has been a
challenging year.*

*We are so grateful to all of our wonderful clients
and communities for their support, concern and
friendship. It has meant the world to us.*

Thank you

**Kate and Duncan Collet-Fenson
Directors of Aston Hearing**

Welcome to the November edition

A reminder that with this issue we are collecting donations to support the printing of Hallmark and the maintenance of the Village Hall. We normally do this collection with the May issue, but put it off due to lockdown, so we are collecting for an 18 month period.

Printing costs us around £8 per year per house. If you can spare between £5 and £10 we would be very grateful and the proceeds will help us to maintain the Village Hall to a high standard.

You can either give cash or a cheque to your delivery person or use the enclosed envelope and deliver it to Yvonne Axe at 4, Woodfield or Clive at Entertainment House. Alternatively you can donate over the Internet to: Lacey Green & Loosley Row Village Hall Fund, Sort code: 20-85-73 a/c 30557900 quoting reference "Hallmark". Thank you.



Can you help?

As I mentioned last time, our advertising manager is retiring and we need to find a new member for the team.

The job involves a few hours of administration over a few days leading up to the publishing of the magazine (4 deadlines per year). The time is spent contacting advertisers when their yearly subscription is due and sending invoices. You will also coordinate any changes to existing adverts and liaise with new advertisers.

After publication there is the sending out of the magazine to all advertisers and subscribers. Most contact is by email.

The current manager will be happy to spend time with the new volunteer to help with transition!

Though the virus levels are again very high we seem to have settled into a "new normal" where we accept the constraints on the way we live and have learnt how to work with them. The supermarkets now have full shelves and the shortages of PPE are less awful.

I have had messages from some of the wonderful people who supported us through lockdown, saying that things are quiet now, but they are ready to rally-round again if needed. Let's hope they are not.

In particular Sally and Peter Pilkington would like to thank their friends and neighbours for their help and kindness during the past few difficult months.

The tennis club have asked me to mention their Walking Tennis initiative. Many older people have been particularly hard hit with the lockdown and walking tennis offers them an avenue to exercise and socialise in the open air. This is a new format and they are currently the only club in Bucks to offer this.

Thanks to Chris Roberts for his cover picture of the Bank Vole

If you would like to get involved in the management of the village you may be interested in the advertisement for a new Parish Councillor on page 29.

It's great to see on page 15 that the Village Hall has reopened and now complies with the Covid avoidance guidelines. Some of the regular classes have restarted and as they are organised club functions these do not need to be limited to 6 people.

However it is difficult to see how any of the seasonal mass meetings of the village can go ahead, no carol service in the hall I'm afraid.

I'm particularly sorry for our pubs. Christmas is normally their peak time when they make the money to get through the year. The limit on groups over 6 will make festive celebrations much lower key - watch their Facebook pages for the latest information on their Christmas bookings.

Best wishes

Mike Piercy
Editor



WESTMEAD Plumbing & Heating Ltd

Proprietor; Derek O'Shaughnessy
Jacaranda, Main Road, Lacey Green.

Qualified Local Tradesman, with over
30 years experience. Offering a
comprehensive plumbing and heating service.

For RELIABLE and friendly service,
Phone ; 01844 275908
Mobile; 07785 326966
Email; westmeadplumbing@talktalk.net

All enquiries welcome



Member of the
Chartered Institute of
Plumbing and Heating
Engineers.
Gas Safe Registered



AIRS HOUSE

FOR
QUALITY CARPETS

TILES, VINYL & WOOD FLOORING

DOMESTIC & COMMERCIAL
INSURANCE ESTIMATES
ADAPTION & REPAIRS

E-mail: sales@airshouse.co.uk

PRINCES RISBOROUGH

TEL & FAX

01844-342546

Station Parade · Summerleys Road
Princes Risborough · Bucks

Hen 
on the
Shore
Fused Glass



Catherine Henshaw is a local fused glass artist based in Loosley Row. She is able to make items to order and to your requirements.

Find her beautiful work here :

www.henontheshore.co.uk
<https://thebritishcrafthouse.co.uk/shop/henontheshore/>
<https://www.etsy.com/shop/HenontheShore>
www.facebook.com/henontheshore

Email: catherinehenshaw@aol.com

FOR ALL YOUR INSURANCE NEEDS

Motor, household & all types
of business insurance



Award Winning Insurance For Over 35 Years

For more information please call (01844) 275 555



Lloyd Latchford
GROUP LTD

Corwall House, Station Approach
Princes Risborough, HP27 9DN

customerservice@lloydatchford.co.uk

Lloyd Latchford Group Limited are authorised and regulated by the
Financial Conduct Authority. Registered in England No. 5988054

WOODLANDERS LIVES AND LANDSCAPES

This is one of the 18 projects currently running within the Chilterns Conservation Board Scheme entitled “Chalk, Cherries and Chairs”.

For the last 18 months, members of the Lacey Green and Loosley Row History Group have been cooperating with this project, which is looking at the lives of people living and working in the Central Chilterns over the last 150 years. Areas of particular interest are chair making and woodworking (bodging), lace making, straw plaiting and tambour bead work.

The research involves many local people together with Bucks New University and the Centre for Buckinghamshire Studies in Aylesbury.

There were plans to involve the community through a range of activities, walking tours, bodgers’ pub tours, talks and maps, and activities for children. Due to the Coronavirus epidemic, these plans have had to be changed. There will still be some heritage walks, and also online videos.

If you would like to volunteer to be involved in the project, please email the Project Leader Helena.chance@bucks.ac.uk. To find out more about forthcoming events and videos, please email me on johnmortham@btinternet.com, or phone 01844 345863.

For anyone who loves the Chilterns this is a fantastic opportunity to take part, and also help to preserve our history for future generations.

Rosemary S. Mortham

Secretary – Lacey Green and Loosley Row History Group

Macmillan Coffee Morning

Due to Covid 19 we are postponing the Coffee Morning until 4th March 2021. So all those knitters and sewing ladies please keep working for then. We will keep you informed nearer the time.

Priority Service Ltd



- *Cleaning - Regular*
- *Spring Clean*
- *End Of Tenancy Clean*

01844 275151

Friendly, local and professional service



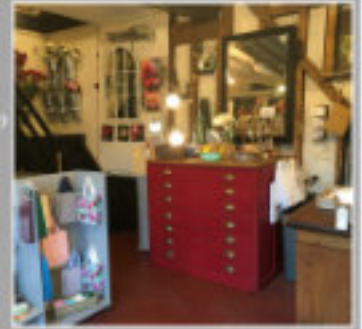
Fiona Michaels
Flowers | Gifts | Events



A country girl with a touch of city chic, I am inspired by the beauty of the gorgeous Chilterns to create natural, fresh, bespoke flower arrangements for weddings, funerals, special events or just because. No two arrangements are the same, meaning all my customers receive a personal service, the joy of bringing a touch of the natural world into their homes and a smile that only beautiful flowers can bring.

From our rustic Barn in Wendover we provide:

- Ready made bunches to go
- Flower delivery Service
(Free to Lucy Green as it is my home!)
- Flower Subscriptions
- UK wide delivery Service
- Wedding & Event Floristry
- Wedding & Event Design/ Management
- A range of unique gifts & homeware



I would be delighted to discuss any requirements with you or, indeed, welcome you to the shop, *Fiona X*

The Barn 13 High Street Wendover Bucks HP22 6DU
www.fionamichaels.com | 01296 695837 | hello@fionamichaels.com

Timpson s Meat, Game and Poultry



We are a small catering butcher based in Saunderton.

We visit market daily to ensure we supply high quality, fresh produce.

Open Tuesday - Saturday

FREE local delivery

www.timpsonsmallholding.co.uk
timpsonsmallholding@hotmail.co.uk
07870 755981





**BIRDS
BATHROOMS**

*"PROFESSIONAL,
PUNCTUAL, HONEST
AND RELIABLE"*

07743858031

BIRDS-BATHROOMS.CO.UK

LUKE@BIRDS-BATHROOMS.CO.UK

 /BIRDSBATHROOMS  @BIRDSBATHROOMS



The Black Horse

As I sit here writing for this edition of Hallmark I am listening to the news in the background wondering when we will have another shut down in this area. It is all a guessing game and difficult for everybody. We must all stay strong and do as we are told, to try and prevent this awful thing that is happening to everybody here and around the world.

The new rules for the pubs as they stand are making it difficult for us but necessary I think. The 10 o'clock closure is not easy to understand, but it has to be done because it is law.

We are finding that we are much quieter in the evenings now due to having to stop serving food from 8.30 so that it gives you time to have it cooked, time to eat, and time to chill before last orders for drinks at 9.30 and out by 10.00.

But it is better than being totally shut down. I would like to say A BIG THANK YOU FOR ALL MY LOCAL DRINKERS THAT HAVE KEPT ME GOING THESE LAST FEW MONTHS, without them I would be closed.

YOU ALL KNOW WHO YOU ARE, even though it is difficult to fit you on the tables at the front at the moment. You have all stood by me and I really appreciate this.

We do have a takeaway menu running from Wed to Sat 6.30 to 8.30pm. It is found on the Black Horse or Lacey Green Facebook pages or ring on 01844345195 or email on lynnecomley@btconnect.com to place an order or check what we have on.

CHRISTMAS is coming up very fast. We have decided this year because of issues, and we do not know if we will be shut or open here, we will do a small Christmas menu for tables up to 6 with crackers etc . Three courses for £19.99.

It will be best to book and we will make it as christmassy as possible. The menu will be ready to see in the first week of November. This year unless things change we will not be doing a New Year's Eve party, really sorry.

Let's hope next year will be better for everybody. All I can say is a BIG THANK YOU FOR ALL MY LOYAL CUSTOMERS AND MY STAFF, YOU HAVE BEEN AMAZING.

Lynne

Speen Helping Hospices (SHH)

At time of going to press SHH are planning to hold our annual Christmas Market on the 14th November from 11.00 to 4.00.

To comply with Covid 19 social distancing regulations we are holding the event on Speen Playing Fields. We will have one large marquee and three smaller ones, the area will be marked out to include in/out entrances and exits. All stalls will have hand sanitiser and masks will be required. Track and trace will be in place, both the NHS app and in written form.

We have a wonderful selection of gifts and treats for all the family for Christmas, with lots of new stallholders and new produce to tempt you.

The children from Speen First School will sing carols at 12.00. Please come and join us, have a glass of Gluhwein, a delicious homemade sausage roll or a bacon bap, then shop till you drop!

In these exceptional circumstances the hospices need us all more than ever to support them. Coronavirus has had a major impact on all of them, increasing their costs whilst their ability to fundraise through mass participation events and community events has left them facing a funding crisis.

We support the following hospices - Helen House for Children, Rennie Groves Hospice Care, South Bucks Hospice at Home and Florence Nightingale in Aylesbury.

Following our last (socially distanced) fundraising event - Jazz in the Park in August we brought our total over £10,000. We would like to increase this figure significantly at the Christmas Market. Please help us to do this.

Hope to see you all on the 14th!

Grainne Suter



Betty Bow Wow

Dog Grooming by Julie Moffat

juliemoffat30@gmail.com
01844 690561 / 07713 175023



PROPERTY ELECTRICAL SERVICES Local Electrical Contractor



Commercial and domestic installations. Rewires, extensions, heating systems, test and inspections, maintenance.

Part P installer to the new 17th edition electrical regulations.

TEL: 07786803701

Email: ojgray@hotmail.co.uk

Coles & Blackwell

Car Service & Repairs
Book online at:

Quality car servicing and repairs much closer than you think!

Where are we? You will find us 300 metres down the small lane opposite the top of Bradenham Wood Lane in Walters Ash, High Wycombe HP14 4UX

Established in 1959



Servicing

Did you know you can get your car serviced by us without invalidating your manufacturers warranty? Legislation passed a few years ago means that you can now choose any garage of your choice to service your vehicle.

Courtesy cars

We have a fleet of new loan cars at your disposal whilst we service your own car or repair bodywork damage. Best of all - they are FREE OF CHARGE! All part of the service you come to expect from Coles & Blackwell.

- air conditioning _____
- mot testing _____
- vehicle servicing and repairs _____
- crash repairs _____
- tyres, clutches & brakes _____
- computerised _____

Open Monday to Friday 8.00 am - 5.30 pm
Saturday 8.30 am - 12.30 pm

01494 563102

High Wycombe



On 28th October, our Monthly General Meeting welcomed Ginny Davis who gave her presentation entitled: "To The Fringe and Beyond". Ginny talked informally about changing career from being a barrister to a full-time writer and performer and performing at the Edinburgh Fringe. On 25th November, Michael Kerry White will be addressing: "What did the Ancients do for us?"

These Monthly General Meetings are from 2.15pm on the 4th Wednesday (excluding December) of each month. We've a full programme from January through to August 2021. Hopefully in 2021 these talks will resume at Lacey Green Village Hall but for the time being we will continue using Zoom.

We do appreciate that not everyone is happy using the Internet but we do pay for the service to Zoom which has the maximum possible Internet security, but we appreciate there can be no absolute guarantee (as the banks have found).

Plans for a very special Christmas Coffee Morning (Wednesday 16th December, 10am) are now well advanced, our groups will show new and existing members the activities they have been undertaking during these difficult times. Reserve your virtual cup and mince pie!

Grand Tour

On the following evening (Thursday 17th December) at 7pm the World We Lived In Group will be inviting you to join them on a 'Grand Tour' of Christmas. The Grand Tour was the 17th and 18th century custom of a traditional trip through Europe undertaken by upper-class young European men of sufficient means and

rank (typically accompanied by a chaperone, such as a family member) when they had come of age (about 21 years old). The custom – which flourished from about 1660 until the advent of large-scale rail transport in the 1840s and was associated with a standard itinerary – served as an educational rite of passage. We will be stopping at some of the places on their Grand Tour. This gives you an opportunity to alight and share your own memories of some of the places we know you will have visited.

A very busy October

On October 8th, we held our first evening event when the convenor of a new group -The World We Lived In – introduced us to a new understanding of George as Regent and King. We explored his life and what a life! Lots of pictures and great cartoons were shown. Did you miss it?



Some of the other activities in October ranged from our Local History Group reminding us that Enid Blyton, Roald Dahl and Sir Terry Pratchett were from our area. Our Local History Group communicate through emails and phone calls.

Our Photography Group goes from strength to strength. We were also introduced to great videos on comets, from our Discovering Science Group.

Fingers crossed we will see some more in the northern hemisphere soon.

There was also a first use of Zoom by several of our 40 groups including our Quiz Group. If you like Quizzes, you'll love these. And you mark your own. No cheating now.

And all this for £20 per annum! You can attend all our groups. Check out all our activities, including those currently using Zoom, at: <https://u3asites.org.uk/highwycombe/events>.

You will need an 'invitation' from us to click into any Zoom session. All you need is a PC, tablet, laptop or iPad. You do not need to download any software in advance. Please email our Membership Secretary for an invitation at: hw.u3a.membership@gmail.com

We would like to tell you more about what we do, the fun and laughter we all have at our meetings, including those held over the Internet. Do not forget to mention topics that interest you most. You may even want to suggest an idea for a new group.

Of course, we all are missing meeting up with our friends in either members' houses or Village Halls. The good times will come back and those cups of tea, although we've noticed that decaffeinated coffee is popular for our evening sessions.

Please do find out more. At £20 for a subscription from September 2020 to August 2021, the only extras will be for cups of tea and biscuits when enjoyed in homes or, as we all hope, in Halls. Who might one meet, virtually of course.

Paul Gilliam



ballet technique
 acro street flexibility
 performance tap
 modern jazz



**From ages 2+, with
 new Adult Classes**

Lacey Green • Chinnor
 Monks Risborough
 Holtspur • Beaconsfield

07855 296242
 natalie@njdance.co.uk
 www.njdance.co.uk

Speen Pilates: For "Every" body

ONES TO ONES ON STUDIO EQUIPMENT



One to one and One to two tuition offers accelerated learning and results, the Reformer uses spring loaded weights to improve your posture, strength and stamina leading to a lengthened, toned body.

GROUP MAT CLASSES (MAX 4)

Pilates aims to enhance your posture, strength and flexibility, body tone, stamina and general fitness whilst releasing unnecessary tension.

All details of group classes listed on the website

For client's comfort and safety, the studio operates to the highest standard of hygiene and social distancing guidelines are implemented.

A HEPA air filtration system is in operation

Amanda: 07733 307475 www.speenpilates.co.uk



Community Tennis

Cardio 8/10



Popularity Grows

It is pleasing that the club has continued to thrive in these uncertain times. Over the past 18 months membership has risen by some 50% and even during October, which is normally very quiet, we continue to attract new interest.

When we built the car park in 2015, capacity for 12 cars was deemed to be sufficient, but not anymore! I am very grateful to Richard West who has allowed us to expand the car park. We definitely need it, particularly on busy Thursday evenings and Saturday mornings.

Next year, we will be looking to floodlight court 3 as club evenings are starting to outgrow 2 courts.

What has become very apparent over recent months is that members are looking to us as an important part of their social scene, particularly with the restrictions. We are acutely aware that the lockdown has had a huge impact on older people and given that tennis is deemed to be low risk, we are launching an exciting new programme in November.

Walking Tennis

If you've never played tennis before, had to give up regular tennis due to injury or ill health or if you can't manage tennis anymore, walking tennis offers an opportunity to learn new skills, improve your fitness and make new friends. It is played using slower balls, 2 bounces are permitted and there is no running or jumping.

The programme will run every Wednesday morning between 10.30am and 11.30am starting on 4th November. The first 2 sessions are FREE and thereafter the coached sessions will be £5. It is particularly aimed at retired people and gives them an ideal opportunity to get outside and get active! Come along and give it a go.

At the other end of the spectrum, junior tennis has expanded considerably, and we now have at least one session each week for each age group. Dan our coach, continues to get great reviews and comments and there are now over 50 children receiving regular weekly tuition. When he started in July 2019, we only had 12!

In terms of competitive adult tennis, we completed last year's winter league in July and August

and had mixed results. The men's team came top in their league and have been promoted, the mixed team finished lower mid-table, but unfortunately the ladies' team have gone down a league. Hopefully with more new members we should get a better result next spring. The men's team have now split with a new 2nd team. It's great that we have 4 teams for this winter, a first for the club!

On Sunday 18th October we held the men's final and the Cummins' Cup. Congratulations to Paddy Woods-Ballard who is our new men's champion and to Donna King and Jonathan Bonnett who won the mixed doubles cup. The ladies' final will be played in November.

As the evenings pull in and it turns a little chillier, rather than hunkering down for the onset of winter, banish those autumn blues and come and try something new. With our floodlit courts and all-weather surfaces, tennis is a great way to get fit, have fun and meet new people. Whether it's adult drills, beginners, cardio, club sessions, junior or walking tennis, we've got it covered! Come and give us a try.

Nigel Glenister



Inspirational Coaching 4 All

Live the life you want
to lead... learn to
soar!

Personal Development/Career Coaching
Family Coaching
Life Coaching
Mental Health Support

07906 402593

www.inspirationalcoaching4all.com

Still Waiting for God....

Equus
Productions
Theatre without the horse!
www.equusproductions.org/02023-041000



We were hoping to bring this wonderfully funny play to the village in June 2020, but for obvious reasons this has been put on hold!

Based on the iconic TV Series, it follows the lives of feisty Diana Trent and her neighbour and friend, the dreamer Tom, as they adjust to life in the Bayview Retirement Home. We have continued to audition (via zoom) during lockdown and as soon as we are able we will let you know about tickets.

In the meantime, if you would like to know more about us - we are a friendly, informal but dedicated group who usually stage two - three productions per year in halls and theatres throughout South Bucks - we would be delighted to hear from you. Two of our management team, Fiona & Mickey, live in the village and you can contact them via the website or on artistie@equusproductions.org

www.equusproductions.org



Speen C of E School with Little Apples Pre-School

• For children from 3-7 years old •

For enquires about this GOOD small school
with Excellent RE

(Ofsted and SIAMS inspections 2019)

Please contact the Headteacher

Mrs Jacque Coles

Tel: 01494 488321

Email: office@speen-cofe.bucks.sch.uk

www.speen-cofe.bucks.sch.uk

Flowers Bottom Lane • Speen HP27 0SX

Jean Janes (Born 1927)

Our Jean came from Derbyshire. She moved to Bucks after the war, at the age of 21 with baby daughter and husband Ted who was a Speen man. He had been conscripted to the mines for war service (as a Bevin boy) and met Jean at a Miners Welfare dance.

The young couple lived in Speen for the first years of their marriage before moving to Lacey Green in 1951. They quickly became active and integral to village life. Ted was long standing Chair of the Parish Council. Jean was a wonderful, strong, independent person in her own right, but was primarily known in the village as Ted's wife, supporting him in his many village responsibilities.

She was tireless, undertaking amongst many activities: assisting in the cricket teas; helping to produce the village magazine; teaching Ballroom at the youth club and baking many, many scones for the Strawberry Teas.

To help with the village magazine that Ted started (then called the Green Gazette), Jean learnt how to type and spent many hours typing, duplicating and collating on their dining room table. To help with the twinning with Hambye she learnt and became quite fluent in French.

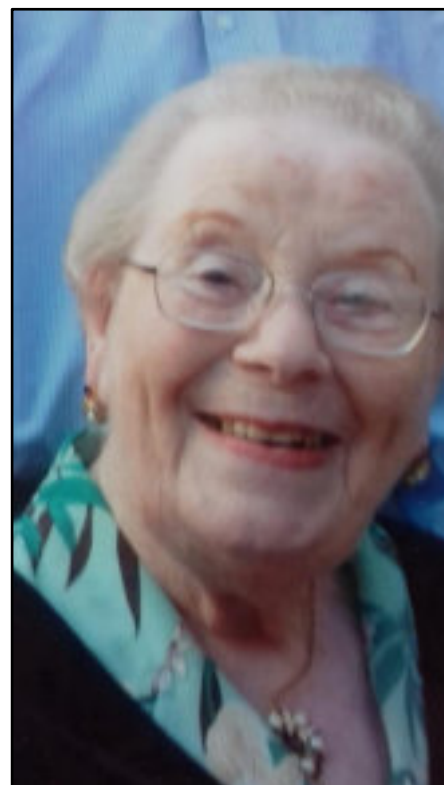
Teaching Ballroom at the youth club she helped run was a joy for Jean as dancing was her passion – she was able to continue dancing with Ted at afternoon sequence dance clubs until she was 90.

Over the years she actively participated in many other village organisations: she loved being in the village choir; she willingly donned her boots for the walking club – although she strongly objected to the name of Ted's Trotters for the new club!

After a full life, tragedy struck at the start of retirement when Jean contracted Viral Encephalitis losing her short term memory.

For the next 25 years Ted became her full-time carer. He ensured that they managed an active life as a couple, including continuing with the dancing that Jean loved so much. In the last few months, during the covid pandemic that has been so difficult for so many, Jean had a fall and had to go into hospital.

Due to the lockdown unfortunately she was not allowed any visitors, something that must have been bewildering for her and was very distressing for Ted and the family.



For the last week of her life she was cared for at the Heights Nursing Home in Downley. Ted was able to spend a little time and say goodbye to his loving wife of 75 years of marriage.

In normal times we would have celebrated her life in the village hall but due to Covid restrictions, only a few close family and friends were able to attend the Crematorium service. Jean went out to Dancing Queen, which is what she was.

A lovely and remarkable lady – a much loved wife, mother, granny, sister, friend and committed member of the Lacey Green community.

**Carol Milne
(daughter)**



DAVID HUSSEY



Builder

Over 30 Years Experience Locally

Extensions Loft Conversions

Carpentry Renovations

Alterations & Repairs

Redecoration

01844 344379 ☎ 07738157146



Effective osteopathic treatment for all your aches and pains including:

- Back & neck pain
- Minor sports injuries and tension
- Headaches
- Trapped nerves
- Joint & ligament pain
- Arthritic pain
- Cranial Osteopathy for babies and children

For appointments and professional advice please call us now on:

01844 292 266

Evening and weekend appointments available and we are registered with all the major health insurers.



www.haddenham-osteopath.co.uk

CHILTERN HOUSE THAME ROAD
HADDENHAM BUCKS HP17 8BY

(near the station in Haddenham)

AZTEC CHIMNEY SWEEP

Johnny

The Sweep

OPEN FIRES
WOODBURNERS

CALL 01494 532748



JON'S AIRPORT CARS

07956 324408

jonsairportcars@gmail.com



**JON STUART – OWNER AND DRIVER
7 SEATER MERCEDES MPV**

**AIRPORTS
SEAPORTS
ALL SORTS!!
ADVANCE BOOKINGS ONLY**

Based in Loosley Row

The Village Hall Reopens!

Just like village halls all around the country, ours has been suffering the consequences of Covid. For six months the building was completely closed with its only visitors members of the executive committee who took responsibility for security, cleaning and essential maintenance. Fortunately the building was in good repair back in March and that stood it in good stead for its temporary mothballing.

I'm sure that residents were delighted to see that the Hall was finally re-opened for the Horticultural Society's annual show at the beginning of September. Hortsoc were determined that their event would go ahead and made extensive plans to ensure that all Covid protection requirements were covered.

As well as the common PPE precautions of social distancing and hand sanitisers, a one-way system was introduced and just one toilet (for emergencies only!) was open. As you see in the centre pages of this Hallmark, the show was a great success with 212 exhibits and it gave the Hall committee confidence that the property could once more be used, albeit in a limited fashion.

Since September some of our regular users - karate, pilates, Natalie Harris Dance and The Whiteleaf Bowmen - have resumed their use of the hall.

Each organisation operates according to the Hall's risk assessment requirements and adds further conditions specific to their group's needs. The premises are thoroughly cleaned between each use and we are pleased to report that these protocols are working well.

For the time being no larger groups, for example with audiences, will be able to meet at the Hall but the committee is ready to respond quickly as soon as circumstances change for the better.

In the meantime sadly the Village Shop remains closed. This facility depends on volunteers and many do not yet feel confident to re-open. However, the questionnaire in the last edition of Hallmark confirmed that the shop, and in particular the Post Office, is valued by residents.

The good news is that the Post Office has now reopened on Monday and Thursday mornings from 9-12 when Nadeem Akhtar from Naphill Local Mini Market, who offered such great support

during lockdown, will be there. Suitable screens and a supply of hand sanitiser are in use, and residents can be confident that all Covid requirements have been taken into account.

The shop team, led by Paul Rogerson, are looking for ways to re-start and it may be possible for Nadeem to offer some groceries on the mornings he is there. If you are interested either in helping with the shop activities or want to offer feedback about the initiative as a whole, please be in touch with Paul at paulrogerson1@btinternet.com.

For now though our valued asset, the Village Hall, remains under used which is disappointing for us all. The car park continues to be a cause for fund raising to improve its surface but progress on this cannot be made under the current circumstances. It does, however, continue to offer space for school drop-offs and it may be possible to use the area for open air activities in the run up to Christmas.

If you have any ideas please do contact a member of the committee - see page 38.

Sue D Arcy
Village Hall Secretary

Windmill WI

Only a very short report as everything we planned was cancelled because of the 6-only rule. We could not have our AGM but all the Committee and Officers are willing to continue for another year.

Our knitting/sewing group is still meeting. We have split into two groups of five and rotate these. I took 14 baby blankets and cribs to 'Cuddles' which were well received. We are now knitting Angel Pockets.

We don't know when we will meet again, but stay well and keep safe.

Ann Bartlett



The Black Horse

Main Road, Lacey Green
www.blackhorselaceygreen.co.uk

A real Village Pub

Good Beer Guide 2017/18

CASK MARQUE APPROVED 2020

Good Food Guide



We now do takeaways Wed to Sat 6.30 to 8 pm

Menus are on the Lacey Green and Black Horse Facebook page.
Ring or email me to place your order or see what is on the menu for the week.
Telephone: 01844 345195 or lynnecomley@btconnect.com

Open all day (Monday from 4pm). Food available Tuesday to Saturday

Lunches: 12.00 - 2.30 Evening Meals: 6.30 - 8.30

Sunday Roast £12.50 small £10.50 (children under 6 free!)

ACCOUNTANTS FOR SMALL BUSINESS

At TaxAssist Accountants we specialise in supporting small businesses. We can help with:

- Self Assessment Tax Returns
 - Business Accounts
 - Corporation Tax
 - Bookkeeping and VAT
 - Business Start-ups
 - Company Formations
 - Payroll and HR
 - Help with Finance Raising
-and much more.



01296 752014

www.taxassist.co.uk/aylesbury

On the Farm

By the end of October most of the field work should be done, crops harvested, and next year's wheat planted. It has been a very changeable year weatherwise with big swings of types of weather for the last year. We seem to have intense periods of work when the weather is right to go, followed by periods of wet when little can be done.

We are currently halfway through planting the winter wheat, our main arable crop. Nowadays we have to plant later than we used to in a bid to control a difficult grass weed called blackgrass, which struggles to compete when the crop is planted nearer to November than September. But with that comes the risk of winter rain making it too wet to plant it at all. It is worrying when we had over 100 mm of rain in the first few days of October.

Last year the very wet autumn was the reason for one of the poorest wheat harvests for a long time, as many farms planted reduced areas of winter crops. The quality is good for the crops harvested before the rain in mid-August, and the overall yield was about two thirds average. We have about half the straw we

need for this winter for cattle bedding and feed, this will be expensive to source as everyone is in the same predicament.

The maize did well and in the end, we have good stocks of grass silage for the winter, despite having very dry spells at times.

Charlotte has finished her 4-year Degree in Agriculture at Harper Adams University. She had intended on travelling and working in New Zealand for a while, as many agricultural students do. Obviously with the Covid 19 situation those plans have been put on hold, which is probably a problem in New Zealand as UK students are likely to be a significant part of the farm workforce. New Zealand peak workload being in our winter when we are generally quieter.

The picture below shows Charlotte holding a twin British Blue calf called Sven. He weighed 30kg at birth, single calves weigh between 45 – 50 kg on average. Although you have two calves when a cow has twins, we prefer to have one single, as the calves are stronger, and the cows fare better post

calving. If you have mixed sex twin calves the female will be a freemartin, which means it will be infertile as the male's hormones affect the female's development during pregnancy.

BORG (Bucks Owl and Raptor Group) have made a long-awaited visit to put up some nest boxes. So far they have put up a barn owl box (see picture below) and a kestrel box. Hopefully they will be back to put up one or two more before the spring, when with any luck they will be put to use.

The Farm Cluster Group has had some information signs made for farms to put up, so hopefully if out walking you may see these, you may also see the farm bird feeder stations out again trying to provide feed for the farmland birds throughout the winter. This is important as the breeding farmland bird index has dropped 45% since 1970, and woodland birds by 29%. The local survey by the Farm Cluster Group indicates that we have good diverse bird populations probably helped by the Chilterns varied landscape and farming types.

Richard West



VILLAGE ENVIRONMENTAL SERVICES DOMESTIC DRAIN SERVICES

Proprietor: Dennis Cook
Est. 1979

24/7
CALLOUT
SERVICE

BLOCKED DRAINS?

CALL US DAY OR NIGHT

FAMILY RUN BUSINESS SINCE 1979
BLOCKED DRAINS CLEARED • REASONABLE RATES
NO EXTRA CHARGE FOR EVENING, WEEKEND
OR BANK HOLIDAY CALLOUTS
CCTV DRAIN SURVEYS
FULL PUBLIC LIABILITY INSURANCE



07850 635 844
01296 624 221 (MESSAGES)



LACEY GREEN Parish Council

What a year our village has had and now it's nearly Christmas – best wishes to all.

We have had several projects going on behind the scenes this year.

Web improvements

We have had to update our website to make it 'compliant'. This has involved our clerk converting the existing documents on our original website into the new 'acceptable' format.

The new website is up and running with new pictures and format. We hope that you will visit, it has the same address as previous www.laceygreen-pc.org.uk

Planning applications are now not updated automatically onto the website, however, we have put a link in directly into Buckinghamshire Council planning department where you can very easily look up all planning applications and decisions the moment they are put up onto their website.

We would welcome your comments on the new website.

Councillor vacancy

We are also looking for a new councillor to join our team (see advert on page 29). Please contact our clerk for further details or any of the councillors if you want more information, all their details are on our website.

Playground now open

We have re-opened our playground in the Lacey Green Sport Club grounds. This took much longer than we had hoped – we had issues getting technicians to site to carry out repairs to the Log World unit. The coronavirus affected their workforce, it seemed to take forever and in the meantime we unfortunately had to keep the playground locked and out of use.

This was most unfortunate as it was the school holidays and the children of the village were disappointed that it was closed. Unfortunately we had to follow guidelines, but we are pleased that it is now opened for all and we would ask that all who use it are mindful of the government recommendations regarding social distancing and sanitising. The council is unable to be in attendance 24/7 so we would ask for your co-operation and be mindful of the numbers in the playground at any one time.

School parking

We have also been liaising with TfB about the parking issues around the school. We have come up with several ideas which will be communicated to both the residents and the school parents in the hope that we can relieve some of the issues around parking.

This scheme has taken much longer than we anticipated but we do hope that the outcome will be of benefit to all those who drive up and down Main Road during the start and finish times of the school.

Kiln Lane pond

For those walking down Kiln Lane, we hope that you will have noticed that the pond has had some work done. See page 27. Thanks to the residents for lots of clearing and tidying. A tree surgeon has been arranged to visit and recommend what action should be taken with regard to overhanging branches and height reductions – well done everyone and thank you.

Speeding

We are still siting the MVAS units around the village, and speed is still an issue. We will soon have the details of the speeds and the numbers of vehicles passing through at speed over the past few months. These results will be posted onto our new website, a good reason to visit.

Community Board

We have a representative on the newly formed 'North West Chilterns Community Board' that has taken over from the former North West Chilterns LAF, and this new board meets every other month and is very pro-active. Details of their objectives and funding for schemes can be found on the Buckinghamshire Council website. Should anyone want further details, please contact one of the parish councillors who will be pleased to help. See also page 33.

We hope you all keep well and please feel free to contact us for any help and or information.

Cathryn Davies



Horticulture Summer

On September 5th the Horticultural Society held a show under the Covid 19 regulations. It was our first event in the hall since lockdown and with the help of our committees we managed to organise the show. We can be in these difficult times.

I would like to thank everybody who made the show possible; the people who worked in the hall and the society; the people who helped us. We learned a great deal and I think it will be put on more events shortly. We were held in the Millennium Hall and were able to solve the problem keeping socially distanced.

We have had many positive comments from the experienced judges this was the only show of its kind the show happened and enjoyed the occasion. The number of entries was high with 24 entries from just over 100 talented and able people growing up roses.

The overall results for the cup winners can be found at <https://www.laceygreen.com/Sections/Results> I hope that the pictures here offer you an insight into the exhibits.

If you are interested in joining the society for future events please check the web site for details of the committee.



ral Society er Show

ociety ran the first horticultural show
n outstanding success! We were the
d thanks to the hall and the society's
e show and keep people as safe as they

ade this possible – from the committees
ho exhibited and to those who visited.
ll be possible to use those lessons to
lped by having such excellent facilities
operate a one-way system with no

from those who took part. For our
ow of the year and they were thrilled
casion immensely. The standard of
niors in the locality. There are some very
und here!

an be found on the village web site:
[Alternative/2020-RESULTS.pdf](#) but we
insight into the standard and range of

y or taking part in any of our future
ails or contact a member of the

Alison Shreeve



JSQ FARM
ENTERPRISES

AL-KO
QUALITY FOR LIFE



**WHEN IT COMES TO MOWING LAWNS,
AL-KO MAKE THE CUT.**

Whether you like cutting your lawn or not, AL-KO have the right product for you. With a complete range from hand, electric, cordless and petrol lawnmowers, all the way to the latest robotic technology, all products are engineered in Germany and designed with 'quality for life'.

Lawnmowers from £69

Tractors/Ride-Ons from £1799

Robotic Mowers from £999

Call us on 01494 489806 for your free brochure or BUY ONLINE at www.Jsqfarmenterprises.com



JSQFARM 

Happy Wanderers

26th July Walk

Although the weather had been a little indifferent in the preceding days, Sunday morning looked a lot more promising. This was the first walk in the 2020/21 programme because of the Covid 19 lockdown and many of the members were looking forward to going on a good walk and getting a chance to socialise after so many weeks stuck indoors. Peter and Jo Clee were ideally placed to start the walking season as their house is located near an AONB close to Lane End and this offers a choice of interesting walks directly from their property. Car parking was available in front of their house and 20 members were soon assembled to start the walks.

Two walks had been planned, the shorter about 2 miles and a longer one of about 4 miles. Initially both walks set off following the same route through Moorend Common. This is an area of mixed woodland and grassland between Lane End and Frieth. It forms part of a Site of Special Scientific Interest because of its unusual flora. It is criss-crossed by numerous footpaths which give walkers a chance to see some rare examples of plants and trees.

After the first mile both groups reached the Frieth to Marlow road and crossed into more open countryside. Although there were no stiles to contend with, progress was a little slower through many of the "kissing gates" due to precautionary Covid measures. The walk now took us back towards Frieth and continued along a residential road to the east of the village. At the end of this lane Jo branched off with three of the group to return to the start point via the northern side of Moorend Common.



Although the weather had started out fine and sunny, the clouds had started to bubble up with a few drops of rain felt in the air. The main group continued to enjoy walking in undulating countryside and wide-reaching open farmland.

After following the edge of one field the threat of rain became imminent so a diversion into some dense woodland was chosen to give the group some cover. This was just as well as a very heavy rain shower appeared from which we were mainly protected. After a brief pause the walk continued through the woodland towards the Blacksmiths at Lane End. Fortunately the rain had stopped and the walk back across Ditchfield Common and past some village allotments was completed in sunny weather.

Although Jo's group had been caught by the rain shower, everyone managed to dry out and a very jolly and sociable picnic was enjoyed in the garden at Rose Cottage where we were joined by a few additional members.

Peter Cree

As you will see from Peter Clee's walk report we did manage to have two walks and picnics in July and August which were very well supported and much enjoyed.

Then Boris made his announcement that no more than six people could meet so unfortunately our walks are on hold again until who knows when.

Please keep safe and well and we will look forward to seeing everyone again soon hopefully!

Liz Lewin



A Complete Professional Design & Landscaping Service

Please call Paul for a competitive quotation

Telephone: 01844 273119

Mobile: 07860 743948

www.paspittles.com

Landscapes Ltd

- **Indian Stone Paving**
 - Patios
 - Driveways
 - Block Paving
 - Turfing
 - Fencing
- Pergolas • Decking
 - Brickwork
- Site Clearance
- Operated Mini Digger



Computer Problems?

Call 01844 220005

No fix no fee

We support office and home based systems

PC repairs and upgrades

We are based in Princes Risborough

We can collect and return your equipment

Costs from as little as £20 ex VAT.

Senior engineer with over 15 years experience

Microsoft and Cisco partner



JINCA LIMITED
YOUR IT SERVICES PARTNER

www.jinca.co.uk

established since 2004

CORPORATE MERCHANDISE

CREATIVE DESIGN

DIGITAL & LITHO PRINT

DISPLAY GRAPHICS

FABRIC PRINTING

INSTALLATIONS

PACKAGING & PROTOTYPING

SIGNAGE

VEHICLE GRAPHICS

WEB2PRINT SOLUTIONS

gpex
MORE THAN PRINT

PK
INPRINT

Pinstone Way, Tatling End, Gerrards Cross, Bucks. SL9 7BJ
T: 01753 887450 E: hello@gpex.co.uk W: www.gpex.co.uk



You could advertise your business here from as little as £37 total for a whole year (4 editions)

The Kop Hill Climb

The Kop Hill Climb as we know it today is a very popular event that takes place over a long weekend in September and raises thousands of pounds for charity.

So why is the Kop Hill Climb so famous amongst car enthusiasts and why are we writing about it in the Lacey Green Hallmark?

First let's go back a couple of centuries and Kop Hill was just like a number of other stony and bumpy cart tracks that led up to the open escarpment and in fact it's a 1 in 4 gradient in places and early cars found it a real challenge. One particular hump still apparent today was infamous for launching riders into the air. Hill climbing on public roads over the country was first established in the 1910s and by the 1920s was becoming a very popular spectacle sport. With Princes Risborough having an easy rail link to London, hundreds and perhaps thousands of spectators would turn up to watch, this made the RAC who governed the sport very uneasy.

On March 24th 1925 the inevitable happened. With crowds lining both sides of the road a car lost control and ran into the watching spectators, luckily the worst injury was a broken leg. The RAC stewards stopped the race and within a week declined to grant any further permits. The ban was never lifted until initially revived in 1990 by the Risborough Town Council as part of the Risborough



festival and then established in 2009 as we know it today.

After the accident in 1925 racing car enthusiasts had to find other ways to pursue their sport, firstly they looked to private land owners which then led onto circuit racing which then developed eventually to the Grand Prix as we know it today. So without the Kop Hill accident I wonder would motor racing be as we know it today?

So why are we writing in Hallmark about Kop Hill? Well the first half of the climb represents the Parish boundary between Lacey Green and Princes Risborough. Midway the road crosses the ancient boundary known as the Black Hedge a 1000-year old Saxon border and the oldest recorded boundary in the country, here our Parish boundary heads east.

From here Kop Hill is then the boundary between Princes Risborough and Great and Little Hampden parishes but from the crest of the hill to the junction with Peters Lane, the climb sits firmly in Hampden's parish.

Lastly I was told by the late local historian Dennis Claydon that my grandmother Elsie Chilton (Rixon back in 1925) and the long time post lady of Lacey Green, actually attended the injured as she was on hand as a qualified first aider. I have no proof of this but I am sure Dennis was right. What I have got are certificates from the second world war stating that she had passed her tests for air raids precautions and first aid for air raid casualties. So presumably she was the first aider for Lacey Green in the event of any air raids.

Ian Kelloway



BETSY WILLIAMS

SOLICITOR



INSTRUCTION TAKEN IN YOUR OWN HOME



Betsy is a qualified Solicitor who comes to you to help with:

- **Wills • Probate • Inheritance Tax planning**
- **Lasting Powers of Attorney • Trusts**
- **General elderly client work**

Betsy, you were a real star and made what, for me, would have been a difficult task a really pleasant one due to your kind understanding and patience and of course, your lovely sense of humour! Thanks again Betsy."

Mrs T

"May I say what a pleasure it was working with you. You are a considerate professional, not to mention a lot of fun! Thank you for your unending patience."

Mrs K

Call: 01844 342083
for a free no obligation chat
or email betsy@betsywilliams.co.uk

For more information and referrals - www.betsywilliams.co.uk

Kiln Lane Pond

The Parish Council owns and looks after 4 ponds in the village. "Deep Pit Pond" in Kiln Lane is probably the largest and deepest. It was probably created in the 17th Century when the brick kiln was operational and the clay was dug out to make bricks.



So this autumn, after the ducks and moorhens had finished breeding, some Kiln Lane residents started work to pull out and remove the sweet reed.

The pond had a major overhaul about a dozen years ago when a work group from the Chiltern Society stripped out all the vegetation around the pond and cut back some neighbouring trees. This greatly reduced the algae on the surface but took away all the shelter for wildlife.

In the past couple of years there has been an invasion of sweet reed and this had swiftly covered 90% of the surface area. At the beginning of 2020 the Parish Council got a grant from WDC to do some maintenance on the pond.

Over 3 weekends the working party managed to remove over half the reed, nobly supported by Horts Soc members and Sarah Halliday, who came and took away all the vegetation for compost. So they are all hoping for magnificent vegetables in years to come!

Since then the pond has been dormant. The drains that used to feed the road's surface water into the pond have become blocked up and the water level is low. The pond is about 4 foot deep at its edge, but John Tyler recently surveyed it from his coracle and reported that the centre is still deeper than his measuring pole.



We will be having a final attack on the reeds in November, if you'd like to help drop me a line. Also if any of you have expertise in managing large ponds and can recommend how to improve the oxygen levels of the water with specialist planting then we'd love to hear from you.

Mike Piercy

Lacey Green Players



A quick update from Lacey Green Players to let you know that our situation has sadly not changed and we have no firm plans for our next performance.

The BBC website recently highlighted 'From musicals to whodunnits, pantomimes to farces, amateur drama companies have long been a source of entertainment in their communities'. In 2020 though, staging plays in small theatres and village halls under social-distancing rules is far from straightforward.

The latest government regulations about the numbers of people who can get together makes staging productions impossible; LGP cannot do anything until life returns to some semblance of normality and groups can get together.

Did you know that in the years following the Roman empire, women were allowed to act in plays. Women would not be allowed on the English stage until 1660. In ancient Rome, there were a number of famous actresses, including one of Emperor Nero's concubines, Acte.

A thought from Tennyson which is appropriate for our current situation:

Hope smiles from the threshold of the year to come, whispering "It will be happier".

We have always enjoyed entertaining our local communities and hope to be able to get back to doing this next year. In the meantime stay safe and take care.

Jane Hervé

Widmer Feeds

— *country store* —

We are your local family run pet store, established in 1988 Have you visited us recently?

We have everything your need for your favourite pets including cats, dogs, rabbits, guinea pigs, hamsters and chickens.

Of course we have lots of pets available for sale too, come and have a look around! We stock 12 different chicken breeds, ducks, geese, rabbits, guinea pigs, hamsters and even goats!

What are you waiting for? Visit us today!



Opening Hours

Monday—Friday: 10am—5pm

Saturday: 9am—5pm

Sunday: CLOSED

**Free Local
Delivery over
£30**



Widmer Feeds Country Store, Pink Road, Lacey Green, Bucks, HP27 0PG

Tel: 01844 344765 www.widmer.co.uk

Freda Dormer (Born 1928)

Freda was born in Denner Hill in 1928, one of five sisters. Freda worked for the Hampden Estate and travelled daily to London.

She met Frank at a local dance and married him in 1951. They built their first house together in Westlands Road and moved in after they married. Freda worked alongside Frank in his building business and they had a daughter Sue who was born in 1955.

In 1965 Freda and Frank moved to Bledlow for a year, but they missed Lacey Green and decided to move back to the village and bought Tor Cottage, Church Lane. Tor Cottage was a small holding and they had a variety of animals including chickens, pigs, sheep and ducks.

They were very happy there, Sue married Roger in 1978 and they held their reception in the garden. Their granddaughter Melanie was born in 1988 and she was loved by them both.

Frank died in 1995 and Tor Cottage proved too large for Freda to continue to live there and she moved to Woodfield in 1998.

She made many friends in the village and attended various clubs including the WI and the blind club for many years. Freda unfortunately developed macula degeneration and her sight deteriorated.

She was forced to stop driving but was greatly helped by Age UK, Risborough Carers and

excellent neighbours until her death in March 2020.

With the support and guidance of Rev Bundock, at a very difficult time because of Covid restrictions, we held her cremation at Amersham and latterly her ashes were interred at the cemetery at Lacey Green, next to Frank.

**Sue Brown
(daughter)**

Vacancy for Parish Councillor

A vacancy has become available at Lacey Green Parish Council for a Councillor.

To be eligible for this role you must be over 18 years and a qualifying citizen of the Commonwealth, the European Community or the Republic of Ireland and an elector, occupy as owner or tenant any land or premises or have a principal place of work within three miles of the parish boundaries.

For full terms and conditions of eligibility, please contact the Parish Council Clerk.

You do not need any formal qualifications to be a councillor; however, these are the attributes the council looks for in a councillor;

- A desire and commitment to contribute to the local community.



**LACEY GREEN
PARISH COUNCIL**

- A willingness to stand up and be counted.
- A good sense of humour and a lot of patience.
- Ability and willingness to attend meetings of the council (or the meetings of other local authorities and local bodies) when required in the evening and other occasional events in the evening and at weekends.

If you would like to serve as a Councillor please apply, in writing or by email, to the Clerk, providing brief background details and stating why you would like to join the Council.

Contact Information:
Frank Post – Clerk, Lacey Green Parish Council:
clerk@laceygreen-pc.org.uk
T: 01296 668206 Closing date for applications: 27th November 2020.

If you would like more information, please contact Cathryn Davies, Chairman of the Parish Council for an informal conversation. Tel: 07702 074073

The Window Doctor

**CARE & REPAIR FOR ALL YOUR
UPVC & ALUMINIUM WINDOW
& DOOR PROBLEMS**

- Replacement of broken down sealed units
 - misting up inside glass
- Adjust front & back doors that do not shut
- New handles, hinges and door locks
- Replacement of patio door wheels
- New security handles with keys
- New door panels and cat flaps
- New Georgian style or leaded style sealed units
- All insurance work • Burglary damage • Servicing



PLUS INSTALLATIONS OF NEW UPVC WINDOWS & DOORS



Call us for a FREE Survey and Quotation.

No call out charge



Friendly Family Established Business

Cowling & Co.

Tel: 01865 891776

Mob: 07860 435742

www.windowdoctor.co.uk

email: cowlingandcothewindowdoctor@gmail.com

**PINK
&
LILY**

The Pink and Lily retains its roots as a friendly, quality local - muddy boots, muddy families and muddy dogs are welcome.

We now comply with the Covid-19 regulations and can offer tables inside, or outside with a heater or brazier.

With a stunning new menu and a range of local and real ales on tap, The Pink looks forward to welcoming all comers!

PINK ROAD, LACEY GREEN, HP27 0RJ

Tel 01494 489857

Windmill Under 5s Preschool

After a difficult summer term we are pleased to be back to a 'new normal' this term!

September brought some new faces to the preschool, who settled in well considering parents were having to stay outside and are not able to enter the building to help settle their children in.

We have however still managed to carry on learning lots of new things and the children have been enjoying using some of the new equipment that was purchased at the end of the summer term with grant money from the Co-Op and Bucks CC.

The weather at the start of term meant that the children could spend lots of time in our new, extended outside area, as well as going out for walks around the village to look at the changing seasons and hopefully, to see the cows in their field. It is a lovely experience for the children to see more of the village they live in, while also teaching them how to cross roads safely, walk in pairs and listen to instructions.

The children have also been learning Makaton signs, which is a version of sign language that can be taught to young children, so they can make their intentions known to their caregivers. It is a lot of fun for everyone to learn them, including the staff, and the children are learning them remarkably quickly.

We were pleased to be able to say a very simple, socially



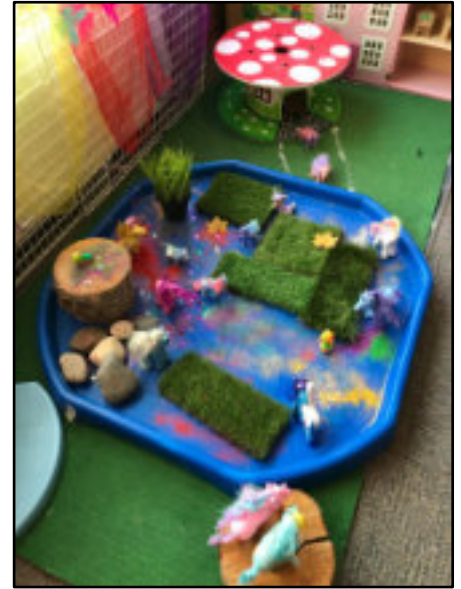
distanced goodbye to our school leavers at the end of July and were hoping to welcome them back for our annual Halloween party. Unfortunately this had to be cancelled due to the Covid restrictions. We did however have a Pumpkin Treasure Hunt around the village, with treats, which some of our ex pupils joined in with too! Thank you to those villagers and businesses who helped to display a pumpkin in their windows!

Autumn is also the term in which we hold our Annual General Meeting and elect our committee for the coming year. We've had such amazing engagement from our committee this year and I'm grateful for the huge amount of time that they give so freely. As a charity, we literally couldn't run without them.

We were very sorry to say goodbye to members who have given many years of dedicated service. We will be saying farewell to our Secretary, Laura Chapman and our Treasurer, Jacqui Cudd. I'm pleased however that three of our members are staying on and look forward to welcoming four new members to the committee, all geared up for another exciting year.

We also said goodbye to our Business Manager, Rachael McComish during the summer holidays and have welcomed Sarah Harvey as our new Business Manager this term.

Rachael has been a dedicated member of the Windmills family, as a parent, committee member and then as an employee. Sarah has some big boots to fill but she is already showing that she can! Thank you, Rachael, for showing her the ropes!



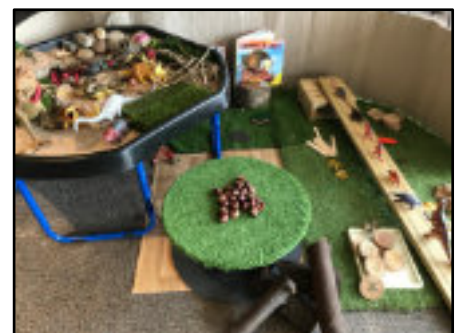
As Christmas approaches we are sad to not be able to hold our annual extravaganza this year but we will still be dressing up in the usual way and celebrating with some Christmas singing, which will be recorded for parents to see.

Hopefully the man in red will still be able to leave a little something for the children even if he is not able to visit in person!

If you would like to arrange a look around the preschool or enquire about a place for your child, please call or email Tracey Winfield (Preschool Manager) on 07502 198405 or email manager@windmillunder5s.co.uk

Natasha Kann

Chairperson
windmillschair@gmail.com





Covers Buckinghamshire and surrounding areas



CALL US TODAY FOR A QUOTE

Phone: 01494 578427 Mob: 07931 735204
jwilkes@email.com | www.jamiewilkes.uk

- Paving
- Patios
- Driveways
- Fencing
- Decking
- Turfing
- Pergolas
- Water features
- Ponds
- Brick work



Shaun Guard TV & WIFI SERVICES

- Aerials - supplied, repaired & poor reception solved
- Satellite - Sky Q dish upgrades, discreet dish installation & foreign TV
- Internet - blackspots cured, data cables to your TVs / computer
- TVs - hung on your wall or set up & tuned
- CCTV & Door Entry - domestic installations

OXFORD AERIALS
www.oxfordaerials.co.uk
Call Thame 01844 259119



A Hills Electrical

Domestic Electrician

Free Quotes

No call out charge, No job too small
All domestic work undertaken.

Part P registered.

Call Andy 07864 128150
Hillsandy010@gmail.com

SELF-CATERING ACCOMMODATION

WINDMILL FARM, PINK ROAD,
LACEY GREEN, PRINCES RISBOROUGH HP27 0PG
TEL. 01844 343901
Email: windmill_farm@hotmail.com

WEEKENDS AND SPLIT WEEKS AVAILABLE
LINEN PROVIDED - SLEEPS 2-4
S.T.B. 2 STAR NON SMOKING

*Ideal for Touring, Walking, Riding etc.
Stabling available*

HEATHER BREED UPHOLSTERY



I am a local lady, fully qualified in both traditional and modern upholstery work. For a free quote & advice call Heather on 0795 4176401



Please view my portfolio on Instagram or Facebook



@heatherbreedupholstery



HandmadebyheatherB

HOME TECHNOLOGY HELP

- MOBILE PHONE, PC/LAPTOP UPGRADE ISSUES
- TRANSFER PICS, CONTACTS, APPS BETWEEN DEVICES
- PRINTER PROBLEMS
- ANTIVIRUS/ OTHER APPLICATION INSTALLATION
- WI-FI/ BLUETOOTH TROUBLESHOOTING
- SMART TV SETUP



CALL DAVE IN LACEY GREEN ON:

07831 775142

NO FIX – NO FEE



2 East Street, Thame, OX9 3JS
T: 01844 617 478
E: admin@oracleearcare.co.uk
www.oracleearcare.co.uk
@oracleearcare

Offering microsuction and irrigation ear wax removal

Helen Kearney

Professional Hair Stylist
with 20 years experience
in the comfort of your own home

Call mobile:

07778 447315

SAVE YOUR TIME AND FUEL COSTS

This Christmas - Love Your Local

As I sit here and write this in October, the weather outside, while not yet frightful, is certainly letting me know that the year is turning. And what a year it has been. After we 'locked down' in March, I am thrilled with the way that we were able to reopen. Needless to say we put into play all the recommendations for the safe reopening of The Pink, and so far, so good – touching wood and not taking anything for granted.

But with the ghost of Christmas yet-to-come on the horizon – and no way of knowing what further sting 2020 may yet have in its tail, I feel that it is important to emphasise how much all of us in the hospitality trade rely on YOU – our lovely customers. We are so grateful for the way that you all came flooding back this summer – and this is a plea to keep using us whenever possible. We in the pub trade need the Christmas influx to keep our doors open all year round – and I'm sure it's the same for The Whip, The

Black Horse and The Hampden Arms. After a year in which we have all faced so much uncertainty, please come and celebrate the Christmas season at your friendly local pubs if you possibly can.

The Pink is open for Christmas bookings, and we will stay open as long as the government lets us. While at the time of writing the Rule of Six is still enforced, six can still make a party – all socially distanced of course. So pick up the phone and call 01494 489857 and let's make it a Christmas to remember for at least some of the right reasons!

And while the world has gone to hell in a handcart there are still some things that remain the same. In this new Covid compliant world our beer is still cold, our wine is still fine, our whiskys are still frisky, our food is still fabulous so let the celebrations be-gin!

Luddy has just launched his fantastic autumn menu – it's a real winter warmer with as

much of our food as possible sourced locally. We're still serving all of your favourites – but with some new and exciting dishes alongside.

The fires are lit and we've even extended the warmth of our welcome into the garden. You can now book a brazier! Alongside our heated terrace tables, we're able to offer tables with mini firepits to warm your cockles while you catch up with your friends and family. Make sure to ask for a brazier when making your booking. These are an exciting new addition to our garden – in fact you could say that they're a match made in heaven! No, truly, they're grate! We're all fired up for the autumn and for the festive season – and by booking with us you can both handle the heat and get out of the kitchen!! See you soon,
Love xx,

Shirl

Landlady: Pink & Lily

Community Board

The new Buckinghamshire Council was worried that the new big unitary authority will become too remote from its electors. They therefore decided to establish local Community Boards to improve local engagement. Our local board is the North West Chilterns and the chairman is Buckinghamshire Councillor Gary Hal, it has met twice.

The Community Board will identify the themes and issues that most need to be addressed for this area and create an action plan to do this, with working groups to look at specific projects and issues.

The board will:

- represent the voices of local people;
- capture thoughts, ideas and suggestions in new ways;
- enable local conversations about priorities;
- identify needs within local communities and work to produce creative solutions;
- explore areas of interest;
- influence how decisions are made and public services are delivered.

There will be a mixture of core meetings and working groups who will focus on a specific issue or local project. Core meetings will agree priorities, allocate funding and feed back on the plan of action.

Anyone who wants to get involved won't need to attend every session. You'll be able to read the agendas and minutes online and can participate in the issues that you feel passionate about. You can join meetings, or take part in a specific priority or project working group. You can complete surveys, take part in polls or share your views.

If you'd like to get involved, email jackie.binning@buckinghamshire.gov.uk or visit www.buckinghamshire.gov.uk/community-boards

Vale Burner Services Ltd



**SERVICE &
BREAKDOWN REPAIR
for
OIL FIRED BOILERS**



**Tel:
01844 208444**

www.valeburnerservices.co.uk

OVENPROUD

To book your oven in or to ask for a quote



Call **01494** ★

488744



Ovenproud
"the best you
can get in domestic
oven cleaning"

Ovens • Agas • Grills • Hobs • Extractors • Microwaves • BBQs

GCSEs or A-levels looming?

With such a big disruption to school this year, many students (& their parents) aren't feeling well prepared.

1:1 home tuition can identify and fill in gaps, helping your child achieve their potential.

Tutoring available

In GCSE Maths, Physics, Chemistry, Combined Science, Business Studies

A Level Physics & Maths

A Physics graduate, I'm a mature and experienced tutor. With long experience in engineering and business, I use real-world examples to bring subjects to life.

For more information, call or text Richard on

07880 715662

DBS checked · References available

Adam's Computing

Does your computer run slow?

Does it need an overhaul?



I can:

- Troubleshoot problems,
- Recommend improvements,
- Install software
- Remove viruses.

I'm close at hand in Lacey Green and can respond quickly.

Call me on 07528032108 or email me at Adam@skcl.org.uk

Red for Remembrance

We are in the season of the Church's calendar which has come to be known as the "Kingdom Season". This is a season of Remembrance, which effectively begins with All Saints Day on 1st November and All Souls Day on 2nd November. It takes us through a plethora of saints' days, including the commemoration of the saints and martyrs of England. It takes us through Remembrance Sunday and Armistice Day. And it culminates in the Feast of Christ the King on the last Sunday before Advent Sunday.

As you may well know, the Church has different Liturgical Colours for the seasons of the Liturgical Calendar. Violet, the colour of sadness and mourning, for the penitential seasons of Advent and Lent. White, the colour of peace and of purity, for the festivals of Christmas and Easter, and for many of the saints' days. Green, the colour of growing things, for what the Church calls "Ordinary Time". Red, the colour of Fire and of Blood, is the colour of Good Friday, of the martyred saints, of Pentecost.

Red is the colour of this Season of the Kingdom. Indeed, red is the colour of the wine which the Church brings to the altar as an offering in its primary act of remembrance, the Eucharist, Holy Communion, the Mass, the Lord's Supper, in which we remember Christ's saving death and resurrection, as we represent his sacrificial offering of love in the present day, and as we look to the future hope of the coming of the Kingdom in its fullness.

Red, the colour of Fire and the colour of Blood, is the colour of Remembrance. How appropriate, then, that the poppy, with its vivid red colour, came to symbolise the fields of Flanders on which so many lost their lives in the course of the First World War; and that the poppy became and continues to be such an important symbol of Remembrance of those of our Armed Forces who have given their lives in defence of justice and peace and freedom in the two World Wars or in the many conflicts which have taken place since those times. We are mindful too of our debt of gratitude to those service personnel on active service at this present time.

When the First World War began in September 1914 it was expected to last just a few months but, as we know, it went on for four long and very difficult years until the 11th hour of the 11th day of the 11th month 1918. The very first poppy appeal was launched on 11th November 1921, three years after the end of the First World War; and it was inspired by the poem "In Flanders Fields", written by Colonel John McCrae.

It is well-documented that some of the bloodiest fighting of the First World War took place in the Flanders and Picardy regions of Belgium and Northern France. Seemingly, the poppy was the only thing that continued to grow in the aftermath of the complete devastation.

Colonel McCrae was a doctor serving there with the Canadian Armed Forces, having previously served as a medical officer in the Boer War.

During a lull in the fighting in the course of the second battle of Ypres, in his first aid bunker, deeply inspired and moved by what he saw, confronted with the bleakest reality of human frailty, aware of the vulnerability of what St. Paul called the "clay jars" of human mortality and the great treasure contained within, he scribbled down these timeless verses:

In Flanders fields the poppies blow
Between the crosses, row on row,
That mark our place; and in the sky
The larks, still bravely singing, fly
Scarce heard amid the guns below.

We are the dead. Short days ago
We lived, felt dawn, saw sunset glow,
Loved and were loved, and now we lie
In Flanders fields.

Take up our quarrel with the foe:
To you from failing hands we throw
The torch; be yours to hold it high.
If ye break faith with us who die
We shall not sleep, though poppies grow
In Flanders fields.

Details of the St. John's church services on Remembrance Sunday can be found on our website: www.stjohnschurchlaceygreen.co.uk

Tony Bundock

Church Walk

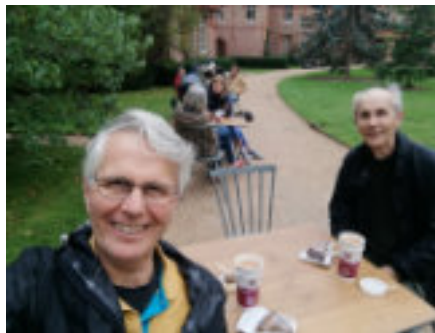
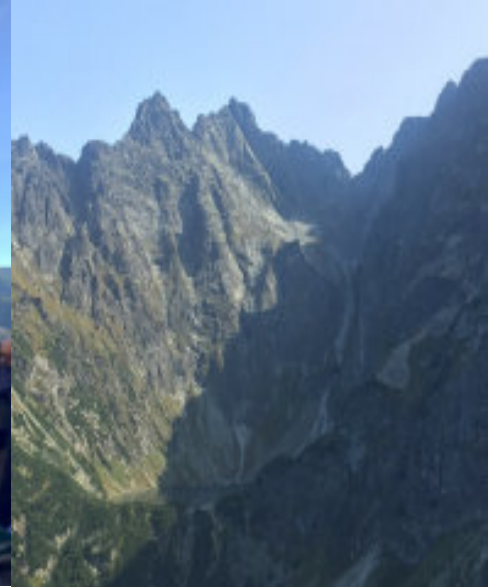
This was the only fundraising initiative that we have been able to have during 2020, and along with many others, the Church is now carrying a large deficit.

The plan was to allow considerable flexibility in what everyone could do to join in and help, whilst remaining comfortable about personal safety. It was decided that everyone could do their own fundraising walks that complied with the "Rule of 6" announcement. The day for the walk was to be the 26th September but some walked on a day and time suited to them and at their own pace. Many members of the congregation did walk (and a handful of photos are shown here). Sponsorship was obtained and many family, friends and villagers generously donated funds and the total raised will of course be uplifted by Gift Aid. The target was exceeded beyond our expectations and we must express our grateful thanks for the generosity of all who helped to achieve our goal.

Our thanks must also go to Vince Stothard for arranging the walk!



James Nisbet with friend in the Tatra mountains of Poland (they walked 50km!)



Vince Stothard with friend at Hughenden Manor (enjoying a well-earned cuppa!)

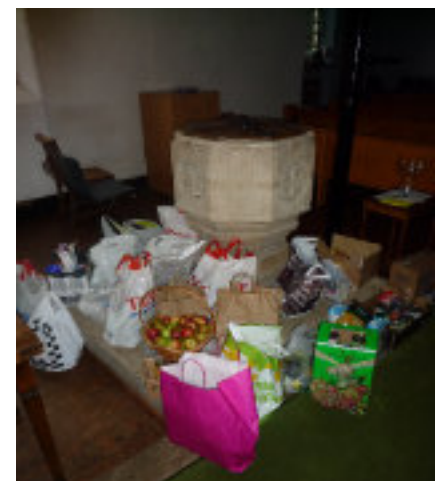


4 of "The Girls" from the congregation plus friend

Pat Rushmere

Church Harvest Festival

Our Harvest Service was very different this year – a service in Church and another an hour later on Zoom. Everyone was very generous once again and the wonderful array of food shown here was gratefully received by the Princes Risborough Food Cupboard at St Mary's Church.



Organisation	Meetings	Contact	Phone	Email address
Happy Wanderers Walking Club	Full walk last Sun of the month 10.30	Ronnie Lewin	274961	relewin@btinternet.com
Happy Wanderers Walking Club	Short walk (2-3 miles) 2nd Wed 10.30	Linda Taylor	345261	
Horticultural Society	3rd Wed of Jan, Mar, May, Jul, Sep, Nov. 8 pm	Alison Shreeve		a.shreeve1@btinternet.com
Speen & North Dean Toddlers	Tuesday 9.30 Chapel Hall, Speen Church in term time	Natasha Kann		Speennorthdeantoddlers@gmail.com
LG Singers	Thursday evenings in term time at St John's School	Denise Kinnard		laceygreensingers@hotmail.com
Lacey Green Players	Theatre, drama, and sometimes food	Jane Herve		info@laceygreenplayers.co.uk
Windmill Under 5s	Mon-Fri 9.00-12.00 (or 1.30 with lunch). Tues & Wed can be extended to 3pm	Tracey Winfield	07502 198405	manager@windmillunder5s.co.uk
Windmill WI (evenings)	1st Wed of month except Jan. 7.45 pm	Daphne Willash	01494 562455	daphne.willash@btinternet.com
High Wycombe & District U3A	4th Wed afternoon of the month	Theresa Hehir	01494 881170	hehirt@hotmail.com
Youth Club	Alternate Fridays - see laceygreen.com web site for details 7.30 pm	Leigh Axe	345216	leigh@laceygreen.com
Over 50s Pub Lunch Club	Black Horse. First Tuesday of the month	Yvonne Axe	345216	
Short Mat Bowls Club	Monday 2 pm	Leigh Axe	345216	leigh@laceygreen.com
LG Sports Club Secretary		Stephanie Dell	07768 831196	steph.dell@btinternet.com
LG Sports Club - Cricket		Jonathan Dell	07786 386912	
LG Sports Club - Tennis		Nigel Glenister	342771	ne.glenister@btinternet.com
LG Sports Club - Football		Ben Foster	344906	laceygreenfc@hotmail.co.uk
Karate	Monday evenings	Stephen Fincham	07540 531034	stevefincham@sky.com
Whiteleaf Bowmen	Wed, Thu & Fri evenings, Apr to Sep	Brenda Cordwell, Sec	01494 485037	www.whiteleafbowmen.org.uk
Pilates Classes	Tuesday mornings and evenings	Sue Croxford	346656	susancroxford@gmail.com
Bucks Council		Carl Etholen	01494 564771	cetholenn@buckscc.gov.uk
St John's Church		Pat Rushmere	345452	richardsp44@btinternet.com
Scouts (Naphill & Hughenden)		Peter Byerley	01494 565955	
Parish Council		Frank Post		clerk@laceygreen-pc.org.uk
LG Windmill	Sundays & Bank holidays 2 to 5 pm April to September. Closed in 2020	Michael Hardy	275871	contact@laceygreenwindmill.org.uk
Millennium Hall		Clive Hodgton	07751 541222	clive@laceygreen.com
Millennium Hall bookings		Karen Hodgton	274254	karen@laceygreen.com
The Black Horse	Quiz night last Sunday of every month at 8pm	Lynne Comley	345195	lynnecomley@btconnect.com
Police		Andy Ralph	101	

Hallmark is published quarterly by the Lacey Green & Loosley Row Millennium Hall Management Committee, although opinions expressed in comment or contribution do not necessarily represent the collective view of that committee.

Our aim is to mirror the mark that the Village Hall makes upon our community, to publish the activities of all Village organisations, and to provide a forum so that the rights, the wrongs, the well-being of village life can be aired.

We welcome news from all the Village clubs, societies, church and school, stories of local interest and entries for the Village Diary. A version of this printed Hallmark may be found on our website www.laceygreen.com, which also has breaking news and many additional articles & photos.

HALLMARK EDITOR

Mike Piercy, Malmsmead, Kiln Lane, Lacey Green, Bucks HP27 0PU
(just before the pond on the right) 01844 344021 Email mike.piercy@gmail.com

ADVERTISING MANAGER

Karen O’Shaughnessy, Jacaranda, Main Road Lacey Green, HP27 0QH (near old Baptist Chapel)
01844 275908 Email karenadvertisinginhallmark@gmail.com

VILLAGE HALL BOOKINGS

Karen on 01844 274254 (answering service)

LACEY GREEN POST OFFICE

Open Monday and Thursday 9.00 to 12.00

*Post Office has reopened.
Shop and coffee morning still suspended*

VILLAGE HALL MANAGEMENT COMMITTEE

Clive Hodgton (Chair)

- Sue D’Arcy (Secretary)
- Leigh Axe (Treasurer)
- Karen Hodgton (Booking Sec.)
- Yvonne Axe, Cathryn Davies, Stella Boll
- Karen O’Shaughnessy
- Gill Mortimer-Biggs
- Jane Hervé, Mike Piercy

LACEY GREEN WINDMILL will not open in 2020

Although Coronavirus Lockdown restrictions are being relaxed in the middle of May, it is certain that “Social Distancing” will continue for a very long time. It would be impossible to adhere to “Social Distancing” inside the windmill, so the decision has been taken to keep the windmill shut for the whole of our normal open season (April to September). This is in the interests of all our volunteers and our potential visitors. Michael G Hardy Windmill Manager The Chiltern Society www.laceygreenwindmill.org.uk

Printed by PK Inprint Ltd 01753 887450

**CLOSING DATE FOR COPY FOR THE FEBRUARY EDITION
January 17th 2021**

MOBILE TYRE FITTING WE COME TO YOU!

- Car, Van & High Performance Tyres
- Specialist Wheel Alignment Service
- Truck & Plant Tyre Specialist
- Trade/Accounts Welcome
- Wheel Balancing
- 4 x 4 Tyres

Stockists Of All Leading
Makes Of Tyres



Tyreteam
mobile



T: 01494 565920

AAAAAA TYRETEAM MOBILE

A. ELLIS *Tree Surgery*

TREE SURGERY - HEDGE TRIMMING - FENCING



Fully qualified and insured tree surgeons

For a free, no obligation quote
please contact us at:

info@aellistrees.com
www.aellistrees.com

T: 01494 817234 M: 07709 491589



At Fit Creatures we understand people are creatures of habit. That's why we take a holistic approach to changing your lifestyle habits to improve your health, fitness, body composition, nutrition and athletic performance. Whether your goal is to lose weight and tone up, improve athletic performance or to simply begin your journey to a healthier lifestyle we are here to help. We provide the coaching and skills to help you enjoy exercise, build a better relationship with food and achieve your goals without feeling that you have to sacrifice the things you love. Whether it's through Personal Training at our private studio or through our group functional fitness classes we are sure we can help you achieve your goals.



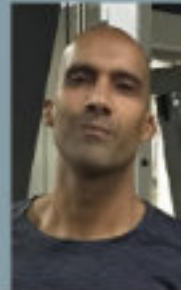
GROUP FITNESS

At Fit Creatures we are dedicated to building a community of fitter, healthier and stronger people. Our Functional Fitness Bootcamp Classes are programmed around movements that we use every day, incorporating multiple muscle groups at the same time. This builds strength, fitness, endurance, stability and mobility across the body, making us more efficient human beings not only inside the gym but outside so well.



PERSONAL TRAINING

Personal Training with Coach Lewis takes place at Fit Creatures private studio on a beautiful farm setting in Lacey Green, conveniently located between the towns of High Wycombe and Princes Risborough.



FREE 7 DAY BOOTCAMP TRIAL
WWW.FITCREATURES.CO.UK

PINK RD, LACEY GREEN
 CALL: 07858 298 712



Winter Salad Leaves

Mixed salad leaves
150g £2-50

Cox's Orange Pippin
 Apple Juice
£3.50 75cl

Spartan Apple Juice
£3.50 75cl

*'On the first day of
 Christmas'* Pear Juice
£3.50 75cl

Our salad is picked and delivered to you the same day. Grown in the village and kept fresh in a biodegradable, re-sealable bag.

The current seasonal selection of hearty leaves includes; Mizuna, Frizzy Endive, Marvel of Four Seasons, with the yummy addition of herbs such as fennel, blood-veined sorrel and flat leaf parsley thrown in the mix.

It is unlike anything you'll get in the supermarket, looks and tastes vibrant and

brings a healthy chomp along to your tasty winter dishes. Bold enough to accompany roasted meats and veggies and amazing with goats cheese or grilled fish.

For more info about what we're growing in our NO DIG garden without pesticides or chemicals visit: www.badgersgarden.uk

@thebadgersgarden

badgerbolts@gmail.com

Call 07973489993

