



HALLMARK

The Lacey Green and Loosley Row Magazine

November 2021

Issue 260

Wishing all our customers a Merry Christmas and a Happy New Year.

@thebadgersgarden
badgerbolts@gmail.com
www.badgersgarden.uk

BADGER'S GARDEN

SIMPLY ALPA
Cake Designer

Luxury wedding cakes created by Alpa Boll award winning cake artist based in Loosley Row.
Cakes designed to be a centrepiece to your special day that will have your guests talking about the cake long after the wedding.

alpa@simplyalpa.co.uk
07927185676

Starting from £300 for wedding cakes and £100 for all celebration cakes

Welcome to the November edition

A reminder that with this issue we are collecting donations to support the printing of Hallmark and the maintenance of the Village Hall.

Printing costs us around £8 per year per house. If you can spare between £5 and £10 we would be very grateful and the proceeds will help us to maintain the Village Hall to a high standard.

You can either give cash or a cheque to your delivery person or use the enclosed envelope and deliver it to Yvonne Axe at 4, Woodfield or Clive at Entertainment House. Alternatively you can donate over the Internet to: Lacey Green & Loosley Row Village Hall Fund, Sort code: 20-85-73 a/c 30557900 quoting reference "Hallmark". Thank you.



As we went to press I was sorry to hear of the death of Brian Turney. He was a familiar figure in the village with his massive blue tractor and St George's flag. He used to cut most of the hedges in the parish (including mine) and will be sorely missed.

The cycle of life affects our village organisations also. On page 5 we have sad news of the demise of LGP after 45 years, balanced by the new star arising of Equus and the Christmas panto. If you're interested in some thespian fun then contact Fiona.

On page 4 and the rear cover we have adverts for local organisations with Christmas events. We also have articles from the Pink & Lily and the Black Horse detailing their Christmas plans - so we should give them as much support as possible. (I did invite The Whip to join in but they did not respond.)

Karen our Village Hall Booking Secretary tells me :

"I am delighted to say that the hall is well and truly back in business. Long may it last. Organisations, old and new are all running as normal.

Looking ahead to the rest of 2021 there are plenty of events to attend. Not least the pantomime, Cinderella.

The diary for 2022 is very busy and already we are unable to accommodate all the dates that are requested. PLEASE book early, as parties are back."

Thanks to the Wests at Stocken Farm for the wonderful front cover photo.

Mike Piercy
Editor



Lacey Green Windmill

The Lacey Green Windmill Restoration Committee were delighted to open the windmill over the summer months with the support of the landlord and the volunteer wardens.

We were able to open every Sunday from 25 July to 26 September and also the Bank Holiday in August - despite the Covid-19 restrictions. We have attracted a number of new volunteers which is excellent and they are all very pleased to be involved.

We were delighted that we

attracted a total of 250 visitors during our 11 open days, 42 were children under 5 years of age so we are hoping they will be interested in helping to maintain the wonderful windmill for many years to come.

We have introduced a number of changes this year, one being a card reader so our visitors do not have to pay cash and this has been a real success. We are considering more changes next year, these will be published on the website before we open again in April 2022.

If anyone is interested in helping in any way with the windmill we would be delighted to hear from you and please encourage friends and family to visit. It is an interesting place and we are so lucky to have the windmill on our doorstep.

Contact details:
contact@laceygreenwindmill.org.uk
or
jane@laceygreenwindmill.org.uk



Equus Productions
Theatre without the Drama
www.equusproductions.org



Cinderella
A traditional family pantomime



Lacey Green Village Hall 29 December - 1 January
Tickets £9 - £12 (family discounts available)
www.seaty.co.uk/equusproductions

Windmill Artists

Exhibition and Bistro

Sat 6 Nov - Village Hall

The ever-popular exhibition returns. Come and browse the works of a wide variety of local artists then refresh yourselves at the bistro tables with a light lunch or tea and cakes.



SAVE THE DATE!

Loosley Row Jubilee Street Party, activities and celebrations

Commencing 2nd to 4th June 2022

For further details contact

Louisa.spearing@yahoo.co.uk or sarah@shgd.co.uk

It's Panto Time (oh yes it is!)

Although we have been producing plays and musicals for several years in the local area, we were delighted to host our first performances in Lacey Green recently. We had two performances of "Waiting for God" in September and it was lovely to have the support of so many local residents. Those who joined us will know that we had some last minute issues as our leading man was taken ill and had to be replaced by our director. Our audiences were very understanding and supportive and we were all extremely grateful. We thoroughly enjoyed performing in the village hall and are excited to be back in December!

Pantomime is a wonderful Christmas tradition and one of those rare times when several generations of the same family

will enjoy a performance together. We may not have any soap stars or reality TV stars with us, but we have a wonderful cast of local performers aged 6 to 60 (many of whom are new to our group) ready to present the traditional story of Cinderella. You can cheer along with Buttons, Cinderella and the Prince, boo and hiss at the wicked step-mother and her "delightful daughters" and you will also meet our rather unique socially distanced horse! With sing-along tunes and lots of audience interaction this will be a fabulous addition to your Christmas celebrations - there will be a few surprises along the way too!

If you fancy joining us for this or future productions, either on stage or in a supportive role

(backstage, costumes, hair, make-up, bar, front of house - whatever interests you) we would be delighted to hear from you. We have no membership and our auditions for all shows are open to all.

Tickets are bookable online now with family discounts available. You can book at www.seaty.co.uk/equusproductions or by emailing me at artistic@equusproductions.org

We do hope to be able to welcome you to one of our shows, auditions or fund-raisers very soon.

Fiona Quilter-Wood

Artistic Director
Equus Productions

Lacey Green Players a fond farewell

Lacey Green Productions was started in 1983 by two families in Lacey Green, Julia and Mike Beaumont and Lynda and Graham Longhurst. They were soon joined by Nell and Brian Panter.

The plan was to build a community of actors, provide entertainment locally and raise money for charity. Everyone who has been involved would agree these have definitely been achieved. To date we have raised over £60,000 for local and national charities.

Over the years we have performed musicals, plays long and short, with and without dinner, Murder Mysteries and themed fundraising events to help finance the building of the new Millennium Village Hall.

We have made many friends who have supported us over the years. For all of this we are very grateful and we thank you very much.

Sadly all great things come to an end and the LGP committee has decided that the group can no longer continue, so despite our

thoughts during lockdown we will not be performing again.

The committee wishes to extend support and gratitude to Equus Productions, based in Lacey Green and the Hughenden Valley players for their local performances in the upcoming months.

Thank you again to everyone who has been involved and to everyone for your support.

Jane Hervé

The Black Horse

Main Road, Lacey Green

A real village pub

Opening times:

Monday, Tuesday, Wednesday 12pm till late.
Thursday, Friday, Saturday 9am till late.
Sunday 12 till 7pm

Breakfast 9 to 12 Wednesday to Saturday.
Lunch 12 till 3pm every day.

Sunday roast 12 till 3pm. Book in advance on 01844 345195.

Evening food Wednesday, Thursday, Friday and Saturday from 5.30 till 8.30pm

We now have Sky Sport live and BT Sports.

Sam Watson
Landlady





Lacey Green Players
A community of actors providing entertainment locally and raising money for charity.

www.laceygreenplayers.org

Community Speed watch

Thames Valley Police and Community Speedwatch UK are relaunching a speed watch programme which will enable communities to establish a team of volunteers to monitor

speeding traffic though their village and pass back data to TVP. If you are interested in volunteering to be involved to help lead, coordinate and or actively participate in the speed

watch scheme can we ask you to email clerk@laceygreen-pc.org.uk.

Tim MacGillivray



Stallwood Landscapes & Garden Management

2010 Hampton Court RHS silver-gilt medal winner

All aspects of hard and soft landscaping undertaken
Garden restoration and Maintenance
Hedge and tree care
Qualified horticulturist with 15 years experience
Quality as standard

For a free quote and advice call Alex on
07725 743857 / 01844 344905

St John's Church



This year we will be having a St John's Church autumn coffee morning on the 13th November. This will have a Christmas flavour with stalls, raffle and tombola. Look out for more details.

On the 10th/11th/12th December we will have a Christmas Tree Festival

culminating with a Christingle service on the Sunday. We would like to invite organisations and individuals to participate. Again watch out for further details.

Christmas services this year will be as follows:

- Advent Sunday (28th November): Advent Carols 3pm (CTR have a 6pm Service at St. Mary's)
- Sunday 5th December – Toy Service at 10am
- Sunday 12th December - Christingle at 3pm to round off Christmas Tree festival
- Sunday 19th December - 6pm Nine Lessons and Carols
- Christmas Eve (Friday 24th) – 3pm Crib Service (possibly streamed on Zoom in addition

to in-person attendance);
Midnight Mass at 11.15pm

- Christmas Day (Saturday 25th) – 10am Holy Communion with Carols
- St. Stephen's Day (Sunday 26th) – 10am short said Service only (akin to Tuesday 9.30am but maybe also singing Good King Wenceslas which could perhaps be A Capella)
- St. John's Day (Monday 27th) – NO SERVICE this year –
- Holy Innocents (Tuesday 28th) – usual 9.30am Tuesday service at which St. Johns gets a mention.

Look forward to seeing you over the Festive Season!

Pat Rushmere

Other dates for your Christmas diary

Sunday 28th Nov 4pm Tree of Light ceremony in Risborough.

Sunday 5th Dec 6pm LG Singers carol concert in the church.

Wednesday Dec 29 Cinderella's opening night in the Village Hall

Speen Helping Hospices Xmas Market

Cancelled last year due to Covid, the Market is back to normal this year. It is taking place on Saturday 13th November at Speen Baptist Church, Chapel Hill, Speen HP27 0SP from 10 to 4.

Puppets, Rag Dolls, Christmas Tree Decorations, Candles, Bags, Skincare, Jewellery, Felt Gifts and a lot more. Come and visit us, we would love to see you there.

Helen and Douglas House, the children's hospice in Oxford, Florence Nightingale, Rennie Grove Hospice and South Bucks Hospice. They all need us to support them to ensure they can support us should/when we need their services.

We have new stallholders along with the old favourites. There will be a great selection of Christmas gifts including Wine, Gins, Cheese, Cold Meats, Luxury Chocolates, Wood Carvings, Jewellery, Small Antiques and Collectables, Knitted Accessories, Glove

The Speen Sassy Santas are planning another fun run on the 18th December to raise funds for SHH and we have another luxury Christmas Hamper draw planned. Details of all these events can be found at our website www.shh-shop.org

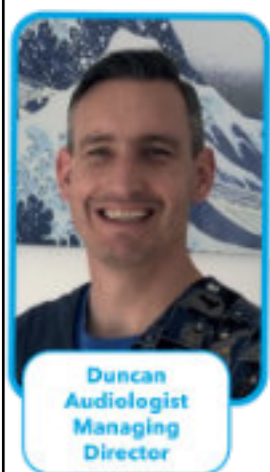
The charities we support are

If you think you can support or sponsor a fundraising event, offer a prize for a raffle or would like to help us in some way, please contact me grainnesuter@btconnect.com or 07778803260

ASTON HEARING

We Are All EARS & Hearing

www.astonhearing.co.uk
01844 396057 . 01494 733840



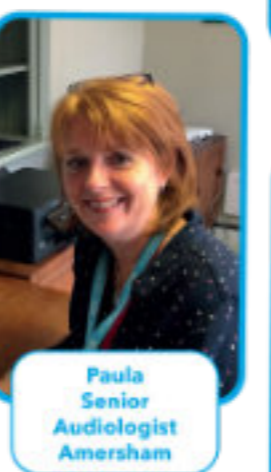
Duncan
Audiologist
Managing
Director



Cassie
Clinical Ear Care
Specialist



Jenny
Audiologist
Thame



Paula
Senior
Audiologist
Amersham



Dedicated
Consulting Rooms
112 High Street
Thame




Dedicated
Consulting Rooms
Flint Barn Court
Amersham

UK & EUROPEAN AUDIOLOGIST

OF THE YEAR 2016 . 2019

Priority Service Ltd



- Cleaning - Regular
- Spring Clean
- End Of Tenancy Clean

01844 275151

Friendly, local and professional service



Fiona Michaels

Flowers | Gifts | Events





We are now taking orders for our wreaths, table decorations and festive arrangements and still have our full range of flowers, gifts and both vintage and contemporary homeware & gifts








The Barn 13 High Street Wendover Bucks HP22 6DU
www.fionamichaels.com | 01296 695837 | hello@fionamichaels.com

Timpson's Meat, Poultry and Game



We are a small catering butcher based in Saunderton.

We visit market daily to ensure we supply high quality, fresh produce.

Open Tuesday - Saturday

FREE local delivery

www.timpsonsmallholding.co.uk
timpsonsmallholding@hotmail.co.uk
07870 755981



BIRDS BATHROOMS

"PROFESSIONAL,
PUNCTUAL, HONEST
AND RELIABLE"

07743858031
BIRDS-BATHROOMS.CO.UK
LUKE@BIRDS-BATHROOMS.CO.UK

 /BIRDSBATHROOMS
  @BIRDSBATHROOMS

Lace Taster Day

This was held on Saturday 11th September in Lacey Green Village Hall.

It was a follow up to the item on Bobbin Lace Making which appeared on BBC Countryfile in the Spring.

Around 30 people interested in making lace attended, including 7 children. There were talks, demonstrations, an exhibition and sales stalls with a lot of lace making equipment.



Quite a number of people were keen to continue, but there are no local classes for them to attend that we know of.

It is therefore intended to set up several informal group meetings in people's homes to help them to learn more.

The event was part of a local initiative - The Woodlanders Project. It was resounding success, and there are plans to repeat it at a different venue.

To me it was very satisfying to find that there are still people, and especially children, who would like to take up this local craft, which I had feared would soon die out.

Rosemary Mortham



Lane Farm Tea and Music



What a lovely afternoon Sept 18 was for the musical afternoon and tea in the beautiful garden of Lane Farm in Church Lane.

The event was run in aid of St. John's Organ Restoration Fund. It was a very happy and successful occasion, raising around £1,500, and producing enough to pay the remainder of the amount which was needed for the restoration.

Thanks must go to the family who live at Lane Farm, to the musicians, and to the many people who helped with the tea, the tickets and the raffle, but most of all to all who supported the afternoon. I think everyone had a good time, and I look forward to welcoming them to church to celebrate the return of our ancient, rare and sweet sounding Samuel Green organ, when it is returned to us next year.



Rosemary Mortham

**PINK
&
LILY**

The recently reopened Pink & Lily has gone back to its roots as a friendly, quality local – muddy boots, muddy families and muddy dogs welcome.

With a stunning new menu and a range of local and real ales on tap, The Pink looks forward to welcoming all comers!

PINK ROAD, LACEY GREEN, HP27 0RJ
Tel. 01494 489857

J M GARDEN RETREATS LTD ~ Bespoke Garden Rooms ~



A Space to Work,
or a Place to Unwind..

Home Office, Summer House, Art Studio,
Gymnasium, Music Room, Gaming Den...
The Choice is Yours!



Whatever you require extra space for, we can help design and build a garden room tailored to your needs. Functional as well as beautiful, your new retreat will be fully insulated, double glazed and fitted with energy efficient heating and lighting to ensure its suitability for use all year round.

www.jmgardenretreats.co.uk

Email: enquiries@jmgardenretreats.co.uk

Open Gardens

Several Loosley Row gardens and a Lacey Green garden opened their gates for a spectacular day of fundraising on behalf of the Thames Valley Air Ambulance on Saturday August 21st.

Organised superbly well by Sarah Halliday at Loosley Dene with her indefatigable energy, the event was a huge success and the atmosphere and gardens were fabulous. Even the predicted thunderstorms could not dampen the Loosley Row spirit and so they kept away! Thank you Sarah, you are a green fingered star!

Also in aid of the TVAA, Green Pastures played host to the inaugural 'Artescape' exhibition. This was a very successful event with more than £300 being donated, a percentage of the overall takings on the day.

There was a wide range of styles and paint mediums on display and plenty of cards and prints available.

Twelve artists exhibited, with Mimi Spearing being the youngest of our artists at only 12 years old. It was a great forum for budding artists to become involved. Luis Moore, 18, showed his fabulous dancers, Rafe Spearing, 15, showed his pen and watercolour work and Lewis Bushell, 20, showed his

animal portraits. I hope they have been inspired by the interest and positive reception that their excellent work received.

As this was such a success, Artescape are hoping to put on a series of exhibitions at Green Pastures over the next year and will continue to donate some of the proceeds from these events to various local charities.

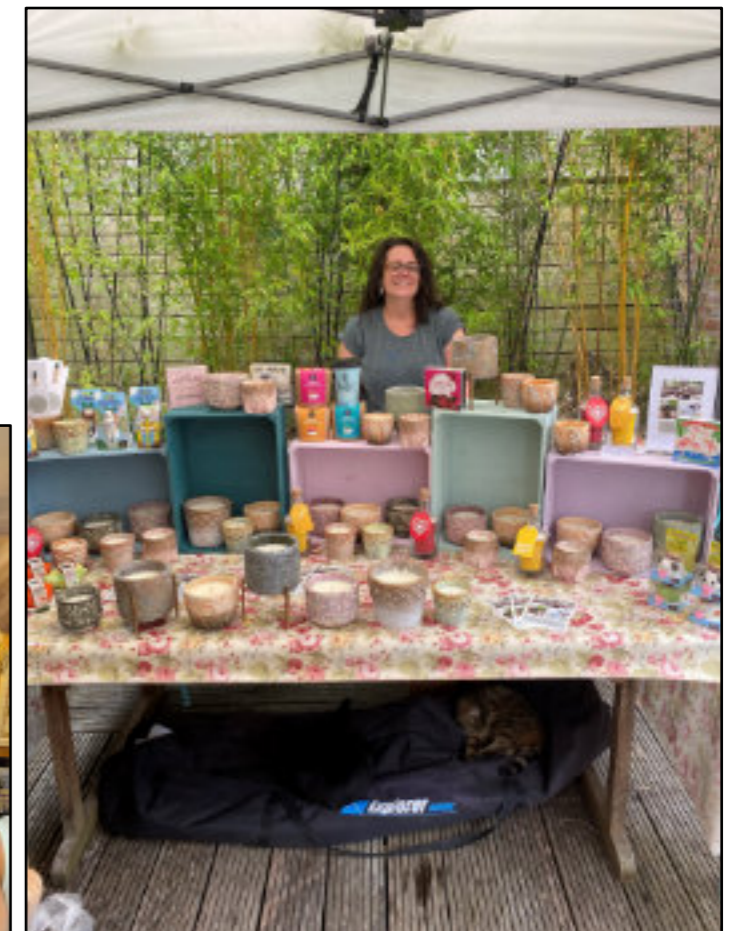
We will start this off with a Christmas Art and ceramic exhibition on Saturday 4th December, so please come along.

A 'Scent and Seed' pop up shop, the creation of Jen Garrity, took up residence for the day at Green Pastures, selling lovely pots filled with deliciously scented candles. Once the candles have burnt down the pots have a new life as planters.

There were lots of other garden themed products on sale too and Jen made a generous donation of £50 to the TVAA.

The eagle eyed amongst you may notice a sleepy Margot and an even more camouflaged, Takeshi under the candle table! Even the animals wanted in on the fun events that day.

We are looking forward to some more fun village days next year with plans already afoot for the Queen's Platinum Jubilee on the 2nd June 2022. If you would like to get involved with this or have any ideas for future events, please contact me at louisa.spearing@yahoo.co.uk.





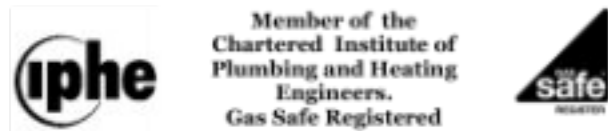
WESTMEAD Plumbing & Heating Ltd

Proprietor; Derek O'Shaughnessy
Jacaranda, Main Road, Lacey Green.

Qualified Local Tradesman, with over 30 years experience. Offering a comprehensive plumbing and heating service.

For RELIABLE and friendly service,
Phone ; 01844 275908
Mobile; 07785 326966
Email; westmeadplumbing@talktalk.net

All enquiries welcome



Builder / Gardener

20 years of experience in all trades: Carpentry, Plumbing, Electrics, Decorating, Repairs. Also garden design and execution, brickwork and fencing.

*No job too small
Friendly, fast & efficient service*

Contact Alexander 01844 347471
mobile: 073885 51754
iamandiciprian81@gmail.com

TUTORS

Experienced, qualified tutors offer coaching for:

11+ transfer test (assessment test also available)

All Key Stage levels, GCSE or AS/A level in English, Maths, French, German, Sciences.

English as a foreign language (EFL)

Telephone 01844 347471 or 07884350939



BOURNE END SWIMMING CLUB



Offering the perfect balance of a friendly environment with competitive opportunities, our philosophy is to provide all members with the chance to swim to the best of their ability, regardless of their aspirations....

- Flexible swim times with low membership fees
- Up to 4 hours of swimming each week (Spring 2021)
- Using the fantastic pool at Wycombe Leisure Centre
- High ratio of coaches to swimmers
- Swim England Qualified Coaches
- Swimmers need to be at Swim England Learn to Swim Stage 6

BE Involved
BE Inspired
BEJSC

Contact us now for a FREE trial

www.bejsc-swimming.org.uk
join@bejsc-swimming.org.uk

FOR ALL YOUR INSURANCE NEEDS

Motor, household & all types of business insurance



Award Winning Insurance For Over 35 Years

For more information please call (01844) 275 555



Cornwall House, Station Approach
Princes Risborough, HP27 9DN

customerservice@lloydatchford.co.uk

Lloyd Latchford Group Limited are authorised and regulated by the Financial Conduct Authority. Registered in England No. 5988054

Supporting Our Community

Princes Risborough Rotary Club needs your help – have you considered getting involved in your community?

I'm Trudi Scrivener, a local woman living in Speen with my family. I'm a working mum and I run a company that provides care to people in their own home. My job is super busy but I've always been interested in giving back in other ways than just through my work.

I joined Rotary because being part of my local community and supporting people at a grass roots level is important to me. Rotary allows me to get involved, get to know people in the area and really make a difference.

Rotary is a great way to network professionally, to meet other like-minded people and to get involved as much as you are able. We are a flexible, friendly club and that means you can put as much time in as you can but equally if your work is busy you can just do what you are able to.

Risborough's best kept secret has been as busy as ever over the past 12 months! Members have been supporting the Vaccinations Centres at Wades Park and the Hughenden Valley Surgery for over 6 months, they have provided a team of support for the Town Council's 7 Farmers' Markets, raised over £7,000 for a refurbished Princes Risborough Primary School Sensory Garden and provided over 30 individuals to support the very successful Kop Hill Climb last month, all profits of which will go to local charities.

Princes Risborough Tree of Light 2021

Supporting Rennie Grove Hospice Care & Rotary Charities

Dedication Ceremony
4.00 p.m. on
Sunday 28 November

Rennie Grove Hospice Care
Care based around you

Over £60,000 raised since 2008

These are only some of the Club's activities throughout the year. Since the beginning of the Pandemic, over £39,000 has been raised (distributed mainly to local charities and organisations) and will continue to provide support to the community.

The Club will continue to play a major part in supporting individuals, organisations and groups in need of its help.

Why not get in touch for an informal chat about getting involved by calling either Trudi, on 07825 004991 / email trudi@ashridgehomecare.co.uk or David White on 07787 750889 / david@dhwhite.co.uk. Visit our Club website rcpr.org.uk or you can follow us on Facebook.



P.A. SPITTLES
LANDSCAPES LTD

- Patios
- Driveways
- Block Paving
- Fencing • Decking
- Turfing
- Grass Cutting
- Site Clearance & Chipper Hire
- Operated Mini Digger & Skidsteer Hire

A Complete Professional Landscaping Service
Please call Paul for a competitive quotation

T: 01844 273119 M: 07860 743948 E: paul@paspittles.com
www.paspittles.com

The Association of Professional Landscapers HTA in f

Computer Problems?

Call 01844 220005

No fix no fee

We support office and home based systems
PC repairs and upgrades

We are based in Princes Risborough
We can collect and return your equipment
Costs from as little as £20 ex VAT.
Senior engineer with over 15 years experience
Microsoft and Cisco partner



JINCA LIMITED
YOUR IT SERVICES PARTNER

www.jinca.co.uk
established since 2004

The Black Horse

Things have been very hectic here at the Black Horse over the last few months. We have had total refurb of the kitchen along with a new cellar and decoration of the accommodation upstairs. We are just in the process of having the pub decorated and this should be complete next week. It is beginning to look very good.

I also would like to let all the readers know that we have a new member of staff who has joined our team and he is our new resident chef. I would like to introduce AJ who comes to us with much experience having been chef at the Le De Spencer, The Chequers and many more.

Our menu will change so that the menu is cooked fresh, from scratch and straight to your plate. We are aiming to offer a range of home-cooked pub classics as well as variety of ever changing specials.

We are also trying to get some ideas for a Black Horse Signature Dish and if there is anything anyone would like to see on our menu we are open for suggestions. Please speak to any member of staff with your ideas.

As we are fast approaching Christmas we are now taking bookings for Christmas and we hope that you are able to join us.

Here are the opening times for Christmas. On Christmas Eve we will be open for drinks and the usual shenanigans. We will also be open for lunch and evening meals on Christmas Eve.

We will open Christmas Day at 12 noon for festive drinks and last orders will be at 2.30 with us shutting at 3pm so we can have our Christmas dinner.

Boxing Day we will be open for drinks but no food.

New Years Eve we will be open for lunch with a New Years Eve party in the evening with buffet food to soak up some of the alcohol and music to help us get in the mood for partying.

New Years Day we will be open for drinks but closing at around 5pm for our staff Christmas party.

I would like to take this opportunity to thank all of the Hallmark readers for your valued support during these strange times. This is a community pub for your enjoyment and use. If there is anything you think that we here at the Black Horse could do better or any suggestions for events, parties etc please let us know. Our door is always open.

We hope to see you soon.

Sam and the team

OVENPROUD

To book your oven in or to ask for a quote



Call **01494 488744**



Ovenproud
"the best you can get in domestic oven cleaning"

Ovens • Agas • Grills • Hobs • Extractors • Microwaves • BBQs




Speen C of E School with Little Apples Pre-School

• For children from 3-7 years old •

For enquires about this GOOD small school with Excellent RE
(Ofsted and SIAMS inspections 2019)
Please contact the Headteacher
Mrs Jacquie Coles

Tel: 01494 488321

Email: office@speen-cofe.bucks.sch.uk
www.speen-cofe.bucks.sch.uk
Flowers Bottom Lane • Speen HP27 0SX

The Black Horse Christmas Opening times

Christmas Eve	12-Late	Lunch 12-3 Evening 5:30-8:30
Christmas day	12-3	-
Boxing Day	12-7	-
Monday 27th December	12-Late	Lunch 12-3
Tuesday 28th December	12-Late	Lunch 12-3 Evening 5:30-8:30
Wednesday 29th December	12-Late	Lunch 12-3 Evening 5:30-8:30
Thursday 30th December	12-Late	Breakfast 9-11:30 Lunch 12-3 Evening 5:30-8:30
New Year's Eve	12-Late	Breakfast 9-11:30 Lunch 12-3
New Year's Day	12-5	Lunch 12-3
2 nd January	12-8	Lunch 12-3
3 rd January	12-Late	Lunch 12-3

Black Horse, Lacey Green, 01844 345195

The Black Horse Christmas Menu

STARTERS
Homemade Wagon and Steak Soup
Prawn Cocktail

MAIN COURSE
Roast Turkey with Figs in Blanket, Homemade Stuffing, Roast Potatoes and Seasonal Vegetables
Roast Beef with Roast Potatoes, Seasonal Vegetables, and a Yorkshire Pudding
Mushroom, Cranberry and Brie Wellington with Roast Potatoes and Seasonal Vegetables
Nut Roast with Roast Potatoes and Seasonal Vegetables

DESSERTS
A selection of desserts available on the day
Cheese and Blacoffs (£2.50 Extra)

COFFEE AND MINCE PIES INCLUDED

TWO COURSE £26.99
THREE COURSE £29.99

Now Taking Bookings from the 30th of November until 23rd of December
Black Horse, Lacey Green, 01844 345195, Bookings Only.
£5 Deposit Per Person and Pre-Order Required, Minimum Bookings of Four People

BETSY WILLIAMS SOLICITOR



INSTRUCTION TAKEN IN YOUR OWN HOME



Betsy is a qualified Solicitor who comes to you to help with:

- Wills • Probate • Inheritance Tax planning
- Lasting Powers of Attorney • Trusts
- General elderly client work

Betsy, you were a real star and made what, for me, would have been a difficult task a really pleasant one due to your kind understanding and patience and of course, your lovely sense of humour! Thanks again Betsy.

Mrs T

"May I say what a pleasure it was working with you. You are a considerate professional, not to mention a lot of fun! Thank you for your unending patience."

Mrs K

Call: 01844 342083
for a free no obligation chat
or email betsy@betsywilliams.co.uk

For more information and referrals - www.betsywilliams.co.uk

On the Farm

It's been a hectic few months at Stocken Farm. We started our wheat harvest slightly later than usual on the 11th of August. There wasn't much rain during harvest, but there wasn't much sun either. We were able to combine our crops, but frustratingly we had to dry most of it. Pleasingly all our wheat has reached milling quality standard, many farmers' crops have not, so this has put the milling wheat premium up, adding about 15% to the value of the crop. Wheat crops in the northern hemisphere have generally been poor quality. The world wheat stock forecast for 21-22 is the lowest it has been since 2008 this will push prices up; they have gone up nearly 25% since a low point in June.

The maize silage was done just before the weather broke at the end of September which is a relief as the trailers don't damage the soil structure or bring mud onto the roads when it is dry.

By the end of October next year's wheat will be planted and the cycle starts again. The crop starts with full potential of a great yield. Gradually throughout the growing season factors affect the potential. It's mostly influenced by the weather but also by the inputs that we apply to feed and protect the crops that make a huge difference to yield and quality potential.

Many products seem to be in short supply or unavailable. The big concern is fertiliser for next spring, due to the cost of natural gas. Prices had already gone up by 75% for ammonium nitrate when CF announced they were shutting their plants at Ince and Billingham (which as a by-product produce 60% of the UK's carbon dioxide) Important if you like bubbles in your lager or gin and tonic!

Since then, ammonium nitrate has gone up from £230t to nearly £700t. We also use Urea (a nitrogen fertiliser). At present you cannot buy any now or for spring delivery. When in the EU we imported from Algeria but with no trade agreement we will largely be reliant on Egypt for North African imports. It was already a concern to get delivery of fertiliser from a port with the HGV shortage, now we wonder if it will be in the port at all.

This autumn we have just grazed a herbal ley, for the first time that we have established



this summer (see below). Instead of just grass the field has been planted with a mixture of 17 species of grass, herbs, and legumes. The legumes will fix their own nitrogen which provides it for the other herbs and grasses reducing a need for artificial fertiliser. The herbal ley will be good for soil fertility, it will be drought resistant on our shallow soils, and the chicory and sainfoin should have anthelmintic properties. This ley is a learning challenge for our management, we will see how the ley and the animals that eat it perform.

We have an ambitious hedge planting plan this winter with over 1km of hedges planned,

with the help of the Chiltern Cluster group. They have also done botanical surveys on some fields that we felt had potential for species of plants to be present that make them a priority habitat worth protecting with careful management. We have learnt about plants that we didn't know existed. One field had over seventy species including wild marjoram, rough hawkbit, ox-eye daisy, wild basil, and pyramid orchids (See below). So, we now must learn how to farm these fields to protect and improve the habitats we have inadvertently created.

When working on the farm you are often treated to natural sights that catch your eye. Nowadays usually we have a camera with us to catch these moments. The front cover of this Hallmark shows a foggy autumnal morning. The mist has been captured in the spiders' webs on the grass, it reminds me of the sea. Makes you realise how busy the spiders have been.

Richard West



Horticultural Society

The society has finally had its first talk since Covid prevented us meeting. The Wild Life Photography in July was absolutely stunning and we had an excellent speaker as well who provided an insight into the challenges of capturing award-winning photographs. For those interested in house plants our journalist expert certainly knew her plants and how to care for them. We look forward to more talks to come and are interested in members telling us what they would like to hear. Visitors are also welcome at any of our meetings which are held bi-monthly on Wednesdays, so please look out on the village web site to see what's on.

In September our annual show was an opportunity to see what our members can do in growing vegetables, flowers and baking as well. We had an excellent turn out although a couple of our vegetable champions were not showing this year, but there were still fine examples of all kinds of fruit and veg to see. Some exhibits cause growing envy of course, but you have to admire the skill and patience that goes into producing, for example, a collection of five different vegetables. Nigel Rolph has plenty of years of experience in showing and he certainly came up trumps again with this collection.

It's not just the older members who win though and we have a cup for the under 16 entrant who wins most points overall throughout the show. This year the cup went to Toby Woods-Ballard and to prove the point he won a first prize with his dahlias which the judge deemed were better than any of the other (adult) entrants, so although we judge in two age groups at the autumn show, under and over 16, Toby demonstrated that with care and judgement age is no barrier to winning.

The floral section was a joy to behold, the colour and scent filled the hall. We had both new and old members who won classes. It's well worth having a go and seeing if your growing and selecting skills match and exceed your friends'. The show is always on the first Saturday in September so make a note in your diary for next year and challenge yourself to have a go, it's great fun!

Like many societies we depend on the goodwill of keen experts and these are becoming harder to find. Our floral judge told us that he was finally retiring (at 90, though you would never have believed it!) We will miss him and his wife and will have to look for other judges for our Spring and Autumn shows. We would like to thank Phil and Joan Shurvell for their dedication and for their experienced and knowledgeable judging for us over the last few years.

The society is continuing to produce an email newsletter, although we are now able to meet. We also provide good social opportunities, including the pumpkin supper in November; we run a discounted seed ordering scheme with a national supplier (up to 50% off), we have run Sunday afternoon workshops in the past and are considering them again; we have a Spring Show in March and a plant sale in May, so there is plenty to join in with.

We are keen to have new members, so if you are interested in gardening, growing or just cooking, we are a friendly society and open to new ideas. Do get in touch with any of the committee; if you would like to visit us to see what we are like before you join up you would be very welcome!

Alison Shreeve





Whether you like cutting your lawn or not, AL-KO have the right product for you. With a complete range from hand, electric, cordless and petrol lawnmowers, all the way to the latest robotic technology, all products are engineered in Germany and designed with 'quality for life'.

Lawnmowers from £69
Tractors/Ride-Ons from £1799
Robotic Mowers from £999

Call us on 01494 489806 for your free brochure or BUY ONLINE at www.Jsqfarmenterprises.com



JSQFARM 

Windmill WI

We had our first meeting back at the Village Hall on 1st September. It was our 34th Birthday meeting so Pat made a lovely cake and we enjoyed a glass of wine with it. As it was the first time we had met in a very long time we didn't have a speaker but enjoyed the evening just chatting to each other.

Our October meeting was our AGM, just one member left the committee due to relocating and the other members were happy to stay on. Pat stays as

President. We then had Edwin Rye speak to us about Autumn and Winter colour in the garden. As usual his talk was very entertaining plus he brought lots of lovely plants and photos with him.

A few of us made the refreshments for the Litter Pick, it was good to see the school children and some of the parents working hard to collect the rubbish in the village. Fortunately they had a lovely sunny afternoon for it.

Next month some of the ladies are going to Waddesdon Christmas Market, and in December we will be having our Christmas Meal together.

We meet at Lacey Green Village Hall, the first Wednesday in the month (except January) at 7.45 pm. If you would like to join us you would receive a very warm welcome.

Anne Bartlett

Happy Wanderers

July Walk

Roger Walker, our Chairman, decided that life should return to normal for the Group and as most members were fully 'jabbed' a walk together was in order.

We all gathered at the Full Moon on Cholesbury Common at the end of July, including several new prospective members who were made very welcome. We enjoyed a 2-hour walk through fields and woods and then it was back to the pub for an excellent lunch.

It has been really great to see old friends and catch up with everyone's experience of living with Covid - fortunately for all of us very positive.

As a footnote - the Happy Wanderers usually walk on the last Sunday of the month. If you are interested, please contact Liz Lewin (relewin@btinternet.com) for details of the next walk.

Liz Southon



August Walk

Getting back into the swing of our regular walks, we decided that avoiding the challenge of steep climbs, both up and down, as well as finding a walk without any stiles was going to be the order of the day. But where, in the Chilterns, is there a circular walk that does not have any hills to go up and down?

Not so far from Lacey Green is Marsworth. This is right on the edge of the Grand Union Canal and adjacent to three reservoirs.

We met in the Waterways Board car park, it was rewarding to see the sun coming out. We were a mixed group of about 18, on a 3 mile walk.

These reservoirs were built for the sole purpose of storing water for the canal, so that the boats could travel through the locks. During the first ¾ mile we passed by seven locks, each slowly rising up to the summit level. So a steep slope could not be avoided, at the junction with the Wendover Arm (the canal, not a pub!) there is a humped back bridge.

John Radford

VILLAGE ENVIRONMENTAL SERVICES DOMESTIC DRAIN SERVICES

Proprietor: Dennis Cook
Est. 1979



BLOCKED DRAINS?

CALL US DAY OR NIGHT

FAMILY RUN BUSINESS SINCE 1979
BLOCKED DRAINS CLEARED • REASONABLE RATES
NO EXTRA CHARGE FOR EVENING, WEEKEND OR BANK HOLIDAY CALLOUTS
CCTV DRAIN SURVEYS
FULL PUBLIC LIABILITY INSURANCE



07850 635 844
01296 624 221 (MESSAGES)



Pink and Lily

It's Still a Covid Christmas ...But We're Back!

Here at The Pink we're hopeful that we'll be able to bury the ghost of last Christmas past and we're excited to celebrate this Christmas yet-to-come!

After last year's last minute Christmas closure we're sat here with everything crossed that we'll be able to celebrate - properly Covid compliant of course - with you all this Christmas. After all of the uncertainties that we have faced in the last 18 months what better way to reunite than celebrating with your friends and family while supporting your local?

We have been thrilled to see you all back since we were allowed to reopen and are so grateful for your continued support but once again I want to emphasise how much all of our village pubs need you. Pubs are literally nothing without customers - the lack of last Christmas has hit us all keenly -

LACEY GREEN SINGERS

How about putting some extra joy into your life! Have you ever thought of joining a choir?

Singing is a brilliant, social activity and has many mental health benefits. Our friendly choir would love to have more members to take part.

We have a wonderful, professional conductor in Anna Markland, who is also great fun.

We rehearse on Thursday evenings at 7.40 pm in St. John's School Hall.

and I'm sure that it's the same for The Whip, The Black Horse and The Hampden Arms too - so please keep supporting all of our lovely locals if you possibly can. And Christmas being just around the corner gives you the perfect opportunity to do just that!

Our Christmas menu is on sale - both for parties and for the big day itself - and bookings are flooding in! With the cost of Christmas food rising and the expected shortages around the corner why not let us take the hassle out of your Christmas and join with us to celebrate the big day itself? In this new Covid compliant world our beer is still cold, our wine is still wet, our whiskeys are still frisky, our food is still fabulous so let the celebrations be-gin!

Although we're heading towards The Bleak Midwinter and it may be a Silent Night right now but we'll soon be Away in a Manger - Hark! Can you hear those Herald Angels Sing?! We can't wait to bring Joy to the World with a proper cracking Christmas. At the minute the

We are Covid-aware and have a one-way system of access, antiseptic hand sanitiser, and social distancing with the chairs. Just turn up, no booking or previous experience necessary.

Alternatively, email us at laceygreensingers@hotmail.com.

With the arrival of Autumn, clubs are picking up momentum, after the summer break not to mention the restrictions of lockdown, and LGS is no exception.

Little Town of Lacey Green is definitely lying still, but come December the Holly and the Ivy will be decorating our lovely traditional country pub, the Gentlemen will definitely be Merry and not resting - as will the women - and we'll all be Ding Donging Merrily on High! After last year's Christmas closure this Christmas will surely feel like The First Noel. I wonder as I wander whether those Three Kings will be joining us this year or whether it will be the Shepherds watching their flocks that we'll see Amid the Winter Snow? So O Come all ye Faithful as here in The Pink We Come A-Wassailing and here's to a fabulous Merry Christmas Everyone!

See You Soon,
Love,

Shirl xx

01494 489857
pinklilypub@gmail.com
Pink-lily.com

We are Covid-aware and have a one-way system of access, antiseptic hand sanitiser, and social distancing with the chairs. Just turn up, no booking or previous experience necessary.

Alternatively, email us at laceygreensingers@hotmail.com.

With the arrival of Autumn, clubs are picking up momentum, after the summer break not to mention the restrictions of lockdown, and LGS is no exception.

We are busy rehearsing for our Christmas concerts on Sunday 5th December at 3 pm with the local schoolchildren and at 6 pm for others at St. John's Church, Lacey Green. As usual, some favourite carols will be sung by all as well as some different arrangements by the choir/ soloists and a couple of readings.

Whether you join the choir or not we should love to see you at the concert which will be advertised in due course.

Best wishes from all at LGS.

Averil Stephenson

Secretary

JW J WILKES
PAVING & CONSTRUCTION LTD

Covers Buckinghamshire and surrounding areas

CALL US TODAY FOR A QUOTE

Phone: 01494 578427 Mob: 07931 735204
jwilkes@email.com | www.jamiewilkes.uk

- Paving
- Patios
- Driveways
- Fencing
- Decking
- Turfing
- Pergolas
- Water features
- Ponds
- Brick work

Shaun Guard
TV & WIFI SERVICES

- Aerials - supplied, repaired & poor reception solved
- Satellite - Sky Q dish upgrades, discreet dish installation & foreign TV
- Internet - blackspots cured, data cables to your TVs / computer
- TVs - hung on your wall or set up & tuned
- CCTV & Door Entry - domestic installations

OXFORD AERIALS
www.oxfordaerials.co.uk
Call Thame 01844 259119

A Hills Electrical
Domestic Electrician
Free Quotes
No call out charge, No job too small
All domestic work undertaken.
Part P registered.
Call Andy 07864 128150
Hillsandy010@gmail.com

SELF-CATERING ACCOMMODATION
WINDMILL FARM, PINK ROAD,
LACEY GREEN, PRINCES RISBOROUGH HP27 0PG
TEL. 01844 343901
Email: windmill_farm@hotmail.com

WEEKENDS AND SPLIT WEEKS AVAILABLE
LINEN PROVIDED - SLEEPS 2-4
S.T.B. 2 STAR NON SMOKING

*Ideal for Touring, Walking, Riding etc.
Stabling available*

HEATHER BREED UPHOLSTERY

I am a local lady, fully qualified in both traditional and modern upholstery work. For a free quote & advice call Heather on 0795 4176401

Please view my portfolio on Instagram or Facebook

@heatherbreedupholstery HandmadebyheatherB

HOME TECHNOLOGY HELP

- MOBILE PHONE, PC/LAPTOP UPGRADE ISSUES
- TRANSFER PICS, CONTACTS, APPS BETWEEN DEVICES
- PRINTER PROBLEMS
- ANTIVIRUS/ OTHER APPLICATION INSTALLATION
- WI-FI/ BLUETOOTH TROUBLESHOOTING
- SMART TV SETUP

CALL DAVE IN LACEY GREEN ON:
07831 775142
NO FIX - NO FEE

Oracle Ear Care

2 East Street, Thame, OX9 3JS
T: 01844 617 478
E: admin@oracleearcare.co.uk
www.oracleearcare.co.uk
oracleearcare

Offering microsuction and irrigation ear wax removal

Helen Kearney
Professional Hair Stylist
with 20 years experience
in the comfort of your own home

Call mobile:
07778 447315

SAVE YOUR TIME AND FUEL COSTS



Wow, what an amazing result for Emma Raducanu at the US Open in September. So there is life after Andy Murray, and just like buses, Cameron Norrie has just won the men's singles at Indian Wells, California too!

Let's hope the Lawn Tennis Association capitalises better on these two successes. Given the amount of money that Wimbledon generates, we should really have more top 50 players. I think this is slowly changing and there appears to be a few exciting prospects coming through the junior ranks. In addition, Covid has got many more playing tennis, which is reflected in record memberships for many clubs.

For our part, membership is very healthy and is currently some 225, an increase of 100 compared to 2 years ago. Club mornings and evenings are now utilising all 3 courts with some members waiting to play too. Wednesday evenings would now be a struggle without the benefit of the new floodlights.

Like many projects, there were delays finishing our floodlights due to component shortages.

However, it is all now completed, and they look brilliant. We were grateful to Nigel Beedham (ex GB player) who opened our court at men's night in September.

We ran a friendly tournament on the afternoon of 3rd October and were delighted to have a record 26 members join in. It was a relaxed afternoon, in the glorious autumn sunshine and was followed by a bring and share lunch. It's nice that we're able to resume with these tournaments after a long absence.

The social side is slowly getting back on track and recently the girls had an enjoyable evening at the Radhuni, quickly followed the week after by the chaps at Olive's. Although, with the benefit of extended hours at the Whiteleaf, there were some sore heads Saturday morning.....the girls were far more sensible!

Looking ahead, we are looking forward to our club Xmas dinner at the Pink & Lily on Saturday 27th November and our festive mulled wine & mince pie tournament on Sunday 12th December.

On the junior side, our coach Dan continues to attract very healthy numbers attending the various weekly group sessions. In fact, the numbers this autumn are higher than the popular summer term, which bodes well for next year.

To develop the juniors further, we are on the lookout for a junior organiser who could perhaps arrange a couple of friendly matches each year with other local clubs. I know the children would greatly benefit from a bit of competition and it will enable them to progress further with their tennis development.

In the meantime, to motivate them, Dan is rewarding juniors for progress and achievement with a small trophy. For September, the player of the month was awarded to James Robertson (mini-tennis red group) for applying technique and remembering how to use it in games. Well done James!

You never know, we may have the next Cameron Norrie or Emma Raducanu hidden in the depths of the Buckinghamshire countryside!

Nigel Glenister



natalie jane
DANCE SCHOOL

ballet technique
acro street flexibility
performance tap
modern jazz

**From ages 2+, with
new Adult Classes**

Lacey Green • Chinnor
Monks Risborough
Holtspur • Beaconsfield

07855 296242
natalie@njdance.co.uk
www.njdance.co.uk



Speen Pilates: For "Every" body

ONES TO ONES ON STUDIO EQUIPMENT




One to one and One to two tuition offers accelerated learning and results, the Reformer uses spring loaded weights to improve your posture, strength and stamina leading to a lengthened, toned body.

GROUP MAT CLASSES (MAX 4)

Pilates aims to enhance your posture, strength and flexibility, body tone, stamina and general fitness whilst releasing unnecessary tension.

All details of group classes listed on the website

For client's comfort and safety, the studio operates to the highest standard of hygiene and social distancing guidelines are implemented.

A HEPA air filtration system is in operation

Amanda: 07733 307475 www.speenpilates.co.uk

County Council



Clearance of Drains and Gulleys

Following Buckinghamshire Council's pledge to spend an extra £4 million on clearing drains and gulleys this year, we are pleased to report that works have been taking place from 11th October until Friday 22nd October at Greenlands as one of the schemes in the area.

Buckinghamshire Growth Vision

The Buckinghamshire Growth Board, which is a partnership between Buckinghamshire Council, the Local Enterprise Partnership, Bucks Healthcare NHS Trust, the Clinical Commissioning Group, Buckinghamshire Business First and environmental and business specialists have been working collaboratively to develop an ambitious "Strategic Vision for Buckinghamshire; Succeeding as a place; Achieving our Shared Vision for Buckinghamshire to 2050."

As part of its development, the Growth Board has been engaging with key stakeholders throughout the county who will be key to supporting delivery of their objectives. The Strategic Vision will set out Buckinghamshire's unique

identity and ambitions. It articulates the partnership focus and commitment to addressing the challenges that Covid19, Brexit and Climate Change present for the County as a whole.

There was a consultation which finished on 29th October. To access the draft Buckinghamshire Strategic Vision visit:

<https://www.buckscc.gov.uk/media/4517072/buckinghamshires-strategic-vision.pdf>

Parking Consultation

Following both Informal and Statutory Parking Consultations that were held, on 8th October 2021 the final decision was taken that parking restrictions are to be implemented as per Highway Code Rule 243 on safety grounds on Main Road Lacey Green (as advertised and proposed in the Statutory Consultation).

This will undoubtedly make the area close to St Johns School much safer, not only for the children but also for all road users.

Councillor Surgeries

It is proposed by all three of us Councillors that we hold monthly councillor surgeries for residents who wish to raise any matters with Buckinghamshire Council that we can assist with.

Every other month in 2021, this surgery will be held online and in between there will be a surgery held in person in the 5 parishes in rotation within the Ridgeway West Division.

The next surgery is Saturday 27th November at 11am at the Golden Cross, Wycombe Road, Saunderton.

The following one is being held on Tuesday 14th December at 6pm via Zoom.

For the 2022 surgeries the plan will be to hold a physical surgery every month in one of the 5 parishes in rotation within the Ridgeway West Division.

Wishing you all a Very Merry Christmas and a Happy New Year 2022.

If you have any more urgent matters or concerns relating to Buckinghamshire Council such as Roads, Adult Social Care, Children services, Education, Planning, Waste & Recycling and Libraries for example that you need some assistance with, please don't hesitate to contact either:

Carl Etholen
carl.etholen@buckinghamshire.gov.uk 07810 442617

Robert Carington
robert.carington@buckinghamshire.gov.uk 07515 997953

Shade Adoh
shade.adoh@buckinghamshire.gov.uk 07941 618331



**AZTEC
CHIMNEY SWEEP**

CALL 01494 532748

**Johnny
The Sweep**
OPEN FIRES
WOODBURNERS



PROPERTY ELECTRICAL SERVICES ELECSA
Local Electrical Contractor Part P Installer

Commercial and domestic installations. Rewires, extensions, heating systems, test and inspections, maintenance.

Part P installer to the new 17th edition electrical regulations.

TEL: 07786803701

Email: ojgray@hotmail.co.uk

**ACCOUNTANTS
FOR SMALL
BUSINESS**

At TaxAssist Accountants we specialise in supporting small businesses. We can help with:

- Self Assessment Tax Returns
- Business Accounts
- Corporation Tax
- Bookkeeping and VAT
- Business Start-ups
- Company Formations
- Payroll and HR
- Help with Finance Raising
-and much more.



01296 752014
www.taxassist.co.uk/aylesbury

Parish Council Litter Pick

We had a super day on Sunday the 10th of October, which saw the reintroduction, after a year off due to COVID, of the village litter pick for both Lacey Green and Loosley Row.

It was lovely to see both lots of families taking part and that all our pickers and bags were fully utilised. Some unusual items were collected including a car bumper and various items of clothing!

It turned out to be quite a social community event, where some villagers met for the first time and had a bit of fun doing so. We had a sense of normality after what we must all admit has been a difficult time for many. I think that just the simple act of meeting neighbours and friends for a sunny afternoon's stroll really can work wonders for the spirits!

Our thanks go to Mr Newton, the headmaster at St John's School, for helping to encourage junior litter pickers to attend the event. I don't think we have seen a more enthusiastic set of youngsters, mums and dads set off, picker and litter bag in hand, to clear our roads and lanes of litter.

Our thanks go also to the wonderful ladies of the W.I for supporting the day with tea and cakes, to Michaela Harris for helping out with extra pickers (over 40 used) and a very big



shout out to Liz Patient for her invaluable support in helping me organise the event!

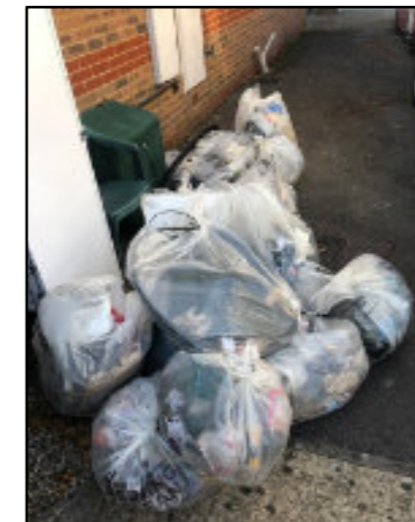
Lastly thanks to you, our villagers, for helping and coming along. And to those who couldn't come this time.... fear not! We will have the next event in the spring and you'll have plenty of opportunity to chip in then!

Of course, litter and the causes of litter occur every day, largely due I think to the extra traffic passing through our lanes. Some of us sometimes pop out for a walk with a plastic bag in pocket and a litter picker in hand and collect the odd wrapper, plastic bottle etc along the way. Our thanks to you for you doing this. Every little helps!

Fix my street!

In the meantime, let's all carry on in our everyday lives to help keep the village tidy. If you see any dumping in our quieter lanes you can report this to the council via www.fixmystreet.buckscc.gov.uk you'll need the location and description of the problem. In addition to litter, you can report deep potholes. Reporting is a simple step by step process (you can add a photo too).

Tim MacGillivray



On a less fragrant note!

Since the Covid pandemic started there has been a nationwide increase in dog ownership. This increase appears to have been reflected in the areas of Lacey Green and Loosley Row.

Whilst most residents are very responsible and clear up the deposits of "poo" left by their dogs on local footpaths, verges and in the fields in the area, there appears to have been a recent increase in dog fouling.

This is unpleasant for adults and children going about their day and poses various health risks and spoils enjoyment for people and families whilst out walking for leisure crossing public footpaths in the fields of the wonderful countryside surrounding us.

Therefore, it is politely requested that all dog owners clear up after their dog whether they are out walking around the local roads or on the public footpaths.

Keith Bowler



DAVID HUSSEY



Builder

Over 30 Years Experience Locally

Extensions Loft Conversions
Carpentry Renovations
Alterations & Repairs
Redecoration

01844 344379 ☎ 07738157146

chicken/egg incubator

chicken/egg have 30+ years of award-winning creative marketing experience and we are egg-cited to offer our support to nurture start-ups and small businesses. Creating a tailored brand toolkit, we'll equip you with everything you need to hatch successfully.

no egg too small!

We offer a FREE 30 minute consultation to discuss your needs and help you get cracking.

✉ karen@chickenegg.co.uk ☎ 07970732075
www.chickenegg.co.uk

Windmill Under 5s Preschool

Celebrating all things autumnal!

The autumn term at Windmills is now well under way. After a relatively quiet start to the term, the preschool is once again buzzing with happy children who have settled back in nicely after the summer break and are enthusiastic and keen to learn.

The autumn term is always the quietest, once we have said a fond farewell to our school leavers, but we were happy to welcome many new children to the preschool in September. They have quickly settled into their new environment, and are enjoying all that Windmills has to offer. We have been celebrating the seasons, with the children bringing pockets full of autumnal treasures (with conkers being a favourite!)

We will be holding our annual Halloween trail around the village at the end of October, with children spotting the hidden pumpkins and following the map in order to find the missing word, with a few treats along the way! We will also be holding a Quiz Night in November for teams of 6. So, look out for more information!

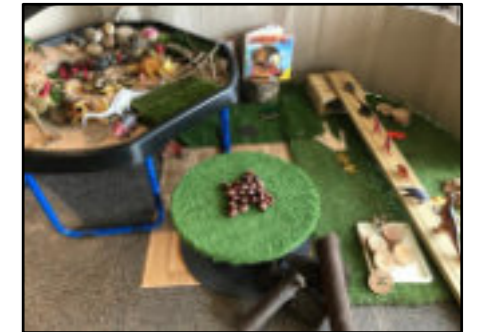
After the half term break, the staff will start to plan for our Christmas activities.

I am sure that it won't be long before the children start practising for the Christmas play. Renditions of Rudolf the Red Nosed Reindeer will no doubt be heard up and down Main Road!

A new committee

Autumn is also the term in which we hold our Annual General Meeting and elect our committee for the coming year. We've had such amazing engagement from our committee this year and I'm grateful for the huge amount of time that they give so freely. As a charity, we literally couldn't run without them. We were very sorry to say goodbye to members whose children have gone off to school, and who have given many years of dedicated service.

I am stepping down as Chairperson after being part of the Management Committee for 8 years, now that all of my children have moved onto St Johns school. We also said farewell to our Secretary, Sue Langley; Treasurer, Jenifer Carter as well as committee members Zak Gollop, Annette Carr and Dawn Pullman. I'm pleased however, that some of our members are staying on and we have appointed a new Chairperson, Pip Cartwright; a new Treasurer, Edmund



Cartwright, new secretary, Victoria Ridgway and new committee member, Heather Pearse. They will be wonderful new assets to the committee and I know that they will all ensure that the preschool continues to run smoothly and be the fabulous preschool that our children attend.

Our new opening hours (Mon-Thurs 9am - 3pm & Fri 9am - 1:30pm) have been a huge success although we still have some places available for children aged 2-5 years. If you would like to arrange a look around the preschool or enquire about a place for your child, please call or email Tracey Winfield (Preschool Manager) on 07502 198405 or email manager@windmillunder5s.co.uk

Natasha Kann

Chairperson
windmillschair@gmail.com

Serenity
SCENTS & LIFESTYLE

Serenity Scents & Lifestyle
Hand poured candles & diffusers with stunning crystals, home accessories & gifts to bring serenity and peace into your life!
#findyourserenity

www.serenity-lifestyle.co.uk

Windmill
under 5s preschool

We believe that children learn best through play and exploration in a happy, fun and stimulating environment. We provide a varied range of activities to support our children's learning and development. In our bright, spacious setting with access to the surrounding playing fields. As a preschool, we recognise the importance of our role in helping our children prepare for the next stage in their life, whilst being mindful of the individual needs of our younger children.

Open Monday – Thursday 9:00am – 3:00pm and Friday 9:00am – 1:30pm

Children welcome from 2 years old

Do get in touch, we'd love to hear from you
07502 198405
manager@windmillunder5s.co.uk
www.windmillunder5s.co.uk

Ofsted
Good
Premier

Lacey Green & Loosley Row Sports Club, Main Road, Lacey Green, Princes Risborough, HP27 6PL
Registered Charity No: 1028976 Ofsted Registered No: EY285032



Heart Attack?

Did you know that we have a defibrillator located on the outside wall to the right side of the village hall.

The defibrillator is an established lifesaver.

The process of calling an ambulance plus time to arrive is often the difference between life and death and more often it's the latter unless you do something - first aider or not.

A 999 operator will provide advice and the code to open the defibrillator cabinet.

Even this takes time, so know this. If someone collapses:

1. Check for danger to you or the casualty. (e.g. traffic? Are they holding an electric tool or cable?)
2. If it is safe, check to see if the casualty responds to you.
3. Shout for help and call 999.
4. With the casualty on their back, check the airways for blockages. (Hold under their neck and lift to tilt their head and open their airway).

5. Listen to their breathing for 10 seconds to check if they are breathing normally.

If the casualty is breathing normally (at least two good breaths), place the casualty in the recovery position and wait for the Emergency Services to arrive. (On their side, tilted slightly forward using arms and legs to stop them falling forward).

If the casualty is not breathing normally, immediately start CPR (Cardiopulmonary Resuscitation or chest compressions) while a second person obtains the access code from the 999 operator and collects the defibrillator from the Millennium Hall. (Press down on the chest with one hand on top of other using your body weight and to rhythm of 'Staying Alive').

The first person should continue CPR while the second person turns on the defibrillator and follows the automatic instructions - it talks to you and tells you what to do and can recognise that you have done it.



The defibrillator will decide if a shock is necessary. Stand back and make sure no one is touching the casualty before pressing the button to deliver the shock.

Only use a defibrillator on someone who does not respond and is not breathing normally.

They may die anyway but you'll know you did your best to save them.

The feeling from success is incalculable.

Leigh Axe

History Group

Wanted The Lacey Green & Loosley Row History Group would like to hear from any village resident who is interested in researching and writing the history of their house or any other old property or location within the village.

If you need help, the History Group has considerable experience of carrying out research of this nature. If you wish they can help you get started by identifying a research

plan, helping you find the best possible sources and availability of research information and they also have "hands on" experience in dealing with the problems that arise with work of this nature.

Whilst any help and guidance will be completely free of charge the Group will ask that you allow the completed document to be included in their archives.

See also <https://www.laceygreen.com/Sections/Historical.php> just in case someone has already done it.

If you would like some help please ring Rosemary Mortham: 01844 345863

Organisation	Meetings	Contact	Phone	Email address
Happy Wanderers Walking Club	Full walk last Sun of the month 10.30	Liz Lewin	274961	relewin@btinternet.com
Horticultural Society	3rd Wed of Jan, Mar, May, Jul, Sep, Nov. 8 pm	Alison Shreeve		a.shreeve1@btinternet.com
LG Singers	Thursday evenings in term time at St John's School	Denise Kinnard		laceygreensingers@hotmail.com
Equus	Theatre, drama, and sometimes food	Fiona Quilter-Wood		artistic@equusproductions.org
Windmill Under 5s	Mon to Thurs 9.00 - 3.00, Fri 9.00 to 1.30	Tracey Winfield	07502 198405	manager@windmillunder5s.co.uk
Windmill WI (evenings)	1st Wed of month except Jan. 7.45 pm	Daphne Willash	01494 562455	daphne.willash@btinternet.com
High Wycombe & District U3A	4th Wed afternoon of the month	Theresa Hehir	01494 881170	hehirt@hotmail.com
Youth Club	Alternate Fridays - see laceygreen.com web site for details 7.30 pm	Leigh Axe	345216	leigh@laceygreen.com
Over 50s Pub Lunch Club	Black Horse. First Tuesday of the month	Yvonne Axe	345216	
Short Mat Bowls Club	Monday 2 pm	Leigh Axe	345216	leigh@laceygreen.com
LG Sports Club Secretary		Stephanie Dell	07768 831196	steph.dell@btinternet.com
LG Sports Club - Cricket		Jonathan Dell	07786 386912	
LG Sports Club - Tennis		Nigel Glenister	342771	ne.glenister@btinternet.com
LG Sports Club - Football		Ben Foster	344906	laceygreenfc@hotmail.co.uk
Karate	Monday evenings	Stephen Fincham	07540 531034	stevefincham@sky.com
Whiteleaf Bowmen	Wed, Thu & Fri evenings, Apr to Sep	Brenda Cordwell, Sec	01494 485037	www.whiteleafbowmen.org.uk
Bucks Council		Carl Etholen	07810 442617	cetholenn@buckinghamshire.gov.uk
St John's Church		Pat Rushmere	345452	richardsp44@btinternet.com
Scouts (Naphill & Hughenden)		Peter Byerley	01494 565955	
Parish Council		Frank Post		clerk@laceygreen-pc.org.uk
LG Windmill	Sundays & Bank holidays 2 to 5 pm April to September.	Jane Herve		contact@laceygreenwindmill.org.uk
Millennium Hall		Clive Hodghton	07751 541222	clive@laceygreen.com
Millennium Hall bookings		Karen Hodghton	07922 184 886	karen@laceygreen.com
The Black Horse		Sam Watson	345195	sam.watson105@gmail.com
Police		Andy Ralph	101	

Hallmark is published quarterly by the Lacey Green & Loosley Row Millennium Hall Management Committee, although opinions expressed in comment or contribution do not necessarily represent the collective view of that committee.

Our aim is to mirror the mark that the Village Hall makes upon our community, to publish the activities of all Village organisations, and to provide a forum so that the rights, the wrongs, the well-being of village life can be aired.

We welcome news from all the Village clubs, societies, church and school, stories of local interest and entries for the Village Diary. A version of this printed Hallmark may be found on our website www.laceygreen.com, which also has breaking news and many additional articles and photos.

HALLMARK EDITOR

Mike Piercy, Malmsmead, Kiln Lane, Lacey Green, Bucks HP27 0PU
(just before the pond on the right) 01844 344021 Email mike.piercy@gmail.com

ADVERTISING MANAGER

Fiona Quilter-Wood. Barn Cottage, Idle Corner, Main Road
email hallmarkadverts@gmail.com 07809 624 864

VILLAGE HALL BOOKINGS

Karen on 07922 184 886

LACEY GREEN POST OFFICE

Open Monday and Thursday 9.00 to 12.00

LACEY GREEN STORES

Village Hall 9.00 am - 12 Noon every week day. Freshly brewed coffee for sale (not Thursdays)

COFFEE MORNINGS

Held in Village Hall 10am - 12 noon Thursdays. Friendly chatting with tea or coffee and biscuit.

VILLAGE HALL MANAGEMENT COMMITTEE

Clive Hodghton (Chair)

Cathryn Davies (Secretary)
Leigh Axe (Treasurer)
Karen Hodghton (Booking Sec.)
Yvonne Axe, Vivien Sheehan,
Gill Mortimer-Biggs,
Jane Hervé, Mike Piercy

LACEY GREEN WINDMILL

The windmill is now closed for the winter. It will reopen in April and then be open on Sunday afternoons and Bank Holidays throughout the summer.

For more details see www.laceygreenwindmill.org.uk

Printed by Hartgraph Ltd 01628 810 523

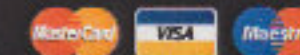
**CLOSING DATE FOR COPY FOR THE FEBRUARY EDITION
JANUARY 17th 2022**

MOBILE TYRE FITTING WE COME TO YOU!

- Car, Van & High Performance Tyres
- Specialist Wheel Alignment Service
- Truck & Plant Tyre Specialist
- Trade/Accounts Welcome
- Wheel Balancing
- 4 x 4 Tyres



**Stockists Of All Leading
Makes Of Tyres**



T: 01494 565920

AAAAAA TYRETEAM MOBILE



At Fit Creatures we understand people are creatures of habit. That's why we take a holistic approach to changing your lifestyle habits to improve your health, fitness, body composition, nutrition and athletic performance. Whether your goal is to lose weight and tone up, improve athletic performance or to simply begin your journey to a healthier lifestyle we are here to help. We provide the coaching and skills to help you enjoy exercise, build a better relationship with food and achieve your goals without feeling that you have to sacrifice the things you love. Whether it's through Personal Training at our private studio or through our group functional fitness classes we are sure we can help you achieve your goals.

GROUP FITNESS

At Fit Creatures we are dedicated to building a community of fitter, healthier and stronger people. Our Functional Fitness Bootcamp Classes are programmed around movements that we use every day, incorporating multiple muscle groups at the same time. This builds strength, fitness, endurance, stability and mobility across the body, making us more efficient human beings not only inside the gym but outside as well.



PERSONAL TRAINING

Personal Training with Coach Lewis takes place at Fit Creatures private studio on a beautiful farm setting in Lacey Green, conveniently located between the towns of High Wycombe and Princes Risborough.



FREE 7 DAY BOOTCAMP TRIAL
WWW.FITCREATURES.CO.UK

PINK RD, LACEY GREEN
CALL: 07858 298 712



ArtEscape
ART
EXHIBITION



To help save
local jobs

THAMES VALLEY
AIR AMBULANCE



SAT 4th DEC 10-4pm 2021

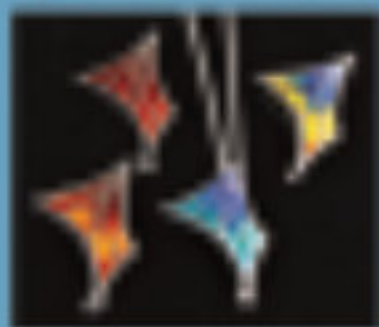
Green Pastures, Loosley Row, HP27 0PF
PARKING AVAILABLE

Artists & Makers Fairs 2021

13 November & 4 December
Thame Town Hall, High Street, OX9 3DP

27 & 28 November

Lacey Green & Loosley Row VHL, Main Road, HP27 0QT



@sallypenrosevansartistsmakersfair



@sallyartistsmakers