

HALLMARK

The Lacey Green and Loosley Row Magazine



February 2022

Issue 261

Hello from Badger's Garden!

We thought we'd use this opportunity (while our crops are still mere seedlings) to let you know a little about what we do. We are a local family business that started up over lockdown, growing salads, herbs and vegetables plus edible flowers and bunches of cut blooms, all here in Lacey Green.

Last year, while not offering the best growing conditions, was a bumper year of growth for us in other interesting ways. Some of you will know that we deliver home grown salads to your door from May to October. Alongside this, we began to supply the Professional Masterchef 2020 winner and finalists and other wonderful local restaurants of note including The Griffin in Old Amersham and Nomadic in the Chalfonts. The Barn Kitchen at Peterley Manor Farm now serves our salad and look out for our

produce popping up on other new menus nearer home very soon!

We grow in a completely organic way using a method called 'no dig' which is great for soil health, if you're interested in making a kitchen garden at home and need help, do get in touch with us.

We are on a mission to encourage growing your own, as a sustainable, healthy and satisfying way to produce your own delicious ingredients! All without plastic packaging and food miles.

Follow us through the seasons on Instagram [@thebadgersgarden](#)
www.badgersgarden.uk

Thanks to all of you who have supported us so far, we appreciate it enormously.

Here's to a great 2022, with very best wishes from the Badgers.



SIMPLY ALPA

Cake Designer



Luxury wedding cakes created by Alpa Boll award winning cake artist based in Loosley Row.

Cakes designed to be a centrepiece to your special day that will have your guests talking about the cake long after the wedding.

alpa@simplyalpa.co.uk

07927185676

Starting from £500 for wedding cakes and £100 for all celebration cakes

Welcome to the February edition

Thanks to Chris Roberts for the cover picture of a Ruddy Darter dragonfly. Sadly Chris passed away over Christmas. He was a leading light in the Whiteleaf Bowmen and a very keen wildlife photographer - his photos formed the front covers for a number of recent Hallmark covers.

It's good to see that our pubs have been busy over the Christmas period and I have heard good reports of the new chef at the Black Horse. We also can look forward to the reopening of The Whip which has been taken over by a professional chef, so hopefully some gastronomic excitement may be coming (see p29).

Christmas was also good for our thespians and I was delighted that Cinderella went ahead as planned, despite the ravages of Covid. We can now look forward to the next Equus production in early May (see advert on page 4 if you'd like to be included).

We read in the papers that in many places the Royal Mail delivery service is falling to bits - unfilled vacancies, poor morale, stress, sickness and Covid have taken their toll. So we should salute Ron our postman who carries on through all weathers and workloads - we certainly

notice when it's his week off and deliveries disappear.

We have a report from Stocken Farm on page 9. It's great to hear that they are reversing the damage done to our hedges over the years - it's good to see farmers improving the environment whilst the politicians waffle on.

More good news on page 12: the Windmill will be reopening in April and will be open all Sundays and Bank Holidays.

Apparently we also have a new craft and produce market opening on the first Sunday of every month in the Hall car park - see advert on page 30.

Finally, there is an update on the school parking plans from the council on page 28. Apparently the work will be started on Monday Feb 21 - which is half-term week.

The Village Hall Committee have been making progress with the plans to resurface the Village Hall car park. A contractor has been selected, the design has been agreed and final planning is under way, aiming for an implementation in the Spring.



You will be aware that the shop in the Village Hall has closed. There is an update on page 11 - importantly there are some surplus funds available for community projects, so if your organisation is looking to fund a project this may be your opportunity.

The Village Hall AGM will be held on Tuesday 8 March at 8pm. Come and give us your views on what is going on in Lacey Green.

Mike Piercy
Editor

School attendance winter 1912/13

Entries from the head teacher's logbook, Lacey Green school.

September 11th 1912. 92 out of 93 present today.

September 24th 1912. Several have gone off to Wycombe Fair. 3 cases of chicken pox notified.

October 25th 1912. Whooping cough is prevalent again. The school will be closed for 3 weeks.

December 2nd 1912. Reopened with 61 present.

February 14th 1913. Assembled the children and spoke to them about the tragic end of Captain Scott and his four followers and read to the children his diary.

February 20th 1913. For 3 days the temperature has been too low for good work.

Reported to the managers that the buckets in the girls' lavatory were full to overflowing.

March 17th 1913. Heavy snowfall. Beatrice Rogers and Edward Anderson have measles. Closed for Easter.

History Group

Equus Productions
Specialist in the production of stage plays and musicals
 www.equusproductions.org

NOEL COWARD'S
BRIEF ENCOUNTER
A NEW & FULLY IMMERSIVE PRODUCTION ADAPTED FOR THE STAGE BY EMMA RICE



This wonderful classic and romantic story is coming to the stunning and historic location of Chinnor Railway Station in early May. We are looking for actors, musicians and crew to take part in this fully immersive production. To register your interest and receive more information, please contact Fiona on artistic@equusproductions.org. We hope to see you "on board"

The Black Horse

Main Road, Lacey Green

A real village pub

Opening times:

Monday, Tuesday, Wednesday 12pm till late.
 Thursday, Friday, Saturday 9am till late.
 Sunday 12 till 7pm

Breakfast 9 to 12 Wednesday to Saturday.
 Lunch 12 till 3pm every day.

Sunday roast 12 till 3pm. Book in advance on 01844 345195.

Evening food Wednesday, Thursday, Friday and Saturday from 5.30 till 8.30pm

We now have Sky Sport live and BT Sports.

Sam Watson
 Landlady




Loosley Row
Platinum Jubilee celebrations
 On Friday 3rd and Saturday 4th June 2022



Join us in celebrating the Queen's Platinum Jubilee on the special bank holiday weekend in June. Beer tent, sharing picnic, music & entertainment, street games, raffle, dressing up, afternoon tea, history walk, fund raising, 'pudding' competition and much more, including a traditional street party in Lower Road, on Saturday 4th June, 12noon until 8pm. Keep in contact with your 'street representative' for more information or email louisa.spearing@yahoo.co.uk or sarah@shgd.co.uk



Queen Elizabeth II Platinum Jubilee

We would like to offer the chance for three fabulous artists to have their work used for advertising and promoting the Loosley Row Platinum Jubilee celebrations.

All entrants need to submit their work by **Friday, March 4th 2022.**

NOTE: It may not be possible to return entries back to the artist.

There will be 3 age categories one winner from each:

- 5-11
- 12-17
- 18+

ALL ENTRIES MUST INCLUDE:

- 1) Category entered e.g 5-11 or 12-17 or 18+
- 2) Name of artist and age (if under 18)
- 3) Email and/or telephone number

Please submit entries to [Louisa Spearing at louisa.spearing@yahoo.co.uk](mailto:louisa.spearing@yahoo.co.uk) or Green Pastures, Lower road, Loosley Row, HP27 6PF





Cinderella made it to the Ball!

Right up until the last minute, we were still unsure as to whether Cinderella would be able to attend the ball, but finally we got the news that performances were allowed to continue – such a sigh of relief considering the set was already built at that point! With careful Covid measures in place, we managed to open the doors at last and what fun we had!

Pantomime is such a wonderful, if slightly eccentric, British Tradition and is the backbone of theatres across the country. We are so grateful to all those people who came along to support us and cheered and boomed in all the right places and even got involved with the fairy godmother's magic spells and participated in the various actions for "Pizza Hut, Kentucky Fried Chicken and McDonalds".

The highlight of every performance was at the end of Act 1 when the Fairy Godmother invited the audience to come outside to wave Cinderella off to the Ball – the magic had worked and there was a fully lit carriage and a beautiful real pony to greet them.

The sounds of wonder from all ages and generations made all the hard work worthwhile – and I had to admit to wiping away tears at every show!

This show was in aid of the MS Society, and we were proud to present them with a cheque for £100 following the run.

As usual for us, we don't wait long before moving forward and after 2 days of clearing and sorting we were making plans for our next show... an exciting and fully immersive production of Brief Encounter – to take place at the beautiful and historic Chinnor Railway. We are just finalising things now, but more news to follow soon! We also have plans afoot for the next performance in the Village.

Thank you so much for all your support and we hope to see you "on board" soon – as part of our team or in the audience.

Fiona Quilter-Wood

Artistic Director
Equus Productions



Stallwood Landscapes & Garden Management

2010 Hampton Court RHS silver-gilt medal winner

All aspects of hard and soft landscaping undertaken
Garden restoration and Maintenance
Hedge and tree care
Qualified horticulturist with 15 years experience
Quality as standard

For a free quote and advice call Alex on
07725 743857 / 01844 344905

ASTON HEARING

We Are All EARS & Hearing

www.astonhearing.co.uk

01844 396057 . 01494 733840



Duncan
Audiologist
Managing
Director



Cassie
Clinical Ear Care
Specialist



Jenny
Audiologist
Thame



Paula
Senior
Audiologist
Amersham



**Dedicated
Consulting Rooms
112 High Street
Thame**



**Dedicated
Consulting Rooms
Flint Barn Court
Amersham**

UK & EUROPEAN AUDIOLOGIST

OF THE YEAR **2016 . 2019**

St John's Church

Christmas at St John's was busy as usual at the time of year and the lovely services were well supported.

Early in December the Christmas Tree Festival was staged once again and was a success despite the date clashing with other village events. Memorable pictures taken during the Festival are shown below.

We are now looking to the services which will be taking place between now and Easter. Everyone is welcome and we would love you to join us!



Mar 27th	MOTHERING SUNDAY Family Communion
April 10th 8:00am 10:00am	PALM SUNDAY Holy Communion BCP Parish Communion with Liturgy of the Palms
April 11th 7:00pm	Monday of Holy Week Compline with Meditation
April 12th 9:30am 7:00pm	Tuesday of Holy Week Holy Communion in the Lady Chapel Compline with Meditation
April 13th 7:00pm	Wednesday of Holy Week Compline with Meditation
April 14th 7:00pm 8:00pm	MAUNDY THURSDAY Agape Supper followed by Holy Communion followed by stripping of the altar
April 15th 2:00pm	GOOD FRIDAY Last Hour and erection of Cross in Church Lane
April 16th 7:00pm	EASTER SATURDAY Easter Liturgy
April 17th 8:00am 10:00am	EASTER SUNDAY Holy Communion BCP Family Communion





On the Farm

As we roll into a New Year it's a time for reflection on last year and wonder what the next 12 months will bring.

The year past

It's been a roller coaster of volatile weather, Covid, Brexit and high inflation. At Stocken Farm we have on balance had a good year. Harvest was about average in yield with good quality, the cows have milked very well and have improved in health and fertility. We had a dry autumn which allowed winter wheat to be planted and hedges to be trimmed, and the beef cattle to stay out beyond Christmas.

The year ahead?

Inflation is out of our control and so difficult to predict. Energy prices are fuelling agricultural inflation and there has been a generally poor harvest in the Northern Hemisphere.

The cattle feed prices just keep on rising and its difficult to know when to go to the market when forward bought foods run out. Fertiliser prices have nearly tripled in 6 months and there will now be many acres not receiving the fertiliser that crops require to perform at their optimum, which will mean lower yields - this is not a UK-only phenomenon.

The result will push prices up for consumers buying food in the shops this summer and into next winter. The weather begins to look like the easiest part of farming to predict!

Hedge planting

Before Christmas we started work on planting some new hedges, we have about 2 km planned. (With the help of the Chiltern Conservation Board). (The photo opposite is of a hedge planted on top of the bank near Woodway.)

These should create wide hedges with occasional trees that will be a haven for wildlife. They are a mix of hawthorn, field maple, hornbeam, mountain ash, wayfaring tree, buckthorn, guelder rose, spindle dog rose and wild cherry.

Hedges and trees are not only field boundaries but provide cover from windy weather, and shade to the cattle. Planting a mixture of trees is important as you never know if a species will come under pressure. An example of just that is Ash trees.

Ash die back is really kicking-in now, younger trees are dying, and a number of big mature trees seem to be rotting at the base. I think that over the next decade we will see many being felled for safety reasons.

Carbon Capture

The Cluster Group members have been using the 'Carbon Toolkit' to calculate their farms' carbon footprint. This will show the total carbon emissions and carbon offsets expressed as tonnes of carbon dioxide, a % of total emissions sequestration, and the carbon balance of our businesses.

Once we have the information, we can look at how we can operate our business in a way to reduce our carbon footprint. We did some soil sampling that was tested for the carbon content, if we can test again in the future we will see if we have sequestered carbon into the soil.

Carbon is the main component of soil organic matter, it helps to give soil its water retention capacity, its structure and its fertility. Our highest result was 12% soil organic matter which I think is higher than average. The cluster group averaged 143 tonnes/hectare of soil carbon in the survey. Soil is the most important asset to a farmer.

Bird life

We also did a quick bird survey of our feeding sites again and were really pleased to see two Jack Snipe had returned from their summer migration to maybe northern Europe or Russia. The next full survey will be in February.

Richard West

Stocken Farm

PINK & LILY

The recently reopened Pink & Lily has gone back to its roots as a friendly, quality local – muddy boots, muddy families and muddy dogs welcome.

With a stunning new menu and a range of local and real ales on tap, The Pink looks forward to welcoming all comers!

PINK ROAD, LACEY GREEN, HP27 0RJ

Tel. 01494 489857

J M GARDEN RETREATS LTD ~ Bespoke Garden Rooms ~



A Space to Work,
or a Place to Unwind...

Home Office, Summer House, Art Studio,
Gymnasium, Music Room, Gaming Den...
The Choice is Yours!

Whatever you require extra space for, we can help design and build a garden room tailored to your needs. Functional as well as beautiful, your new retreat will be fully insulated, double glazed and fitted with energy efficient heating and lighting to ensure its suitability for use all year round.



www.jmgardenretreats.co.uk

Email: enquiries@jmgardenretreats.co.uk

Lacey Green Windmill

The Lacey Green Windmill Restoration Committee were very pleased with the success of the open days held during the summer of 2021 and this season we are reverting to our 'normal' opening hours.

The opening dates and hours for 2022 are as follows:

Sundays from 3 April until 25 September: 14.00 - 17.00

Bank Holidays: 14.00 - 17.00

- Monday 18 April
- Monday 2 May
- Thursday 2 June
- Monday 29 August

National Mills weekend

Saturday 7 May: 14.00 - 17.00
Sunday 8 May: 11.00 - 17.00

Entrance

We ask for "Donations to Visit" with suggested minimum of Adult £3.00 and Child (5 to 15) £1.50.

Covid precautions will be followed throughout the opening season (following national guidance).



If you know of anyone who would be interested in helping in any way with the windmill we would be delighted to hear from you or them. We have many opportunities for working with the committee and the volunteers.

Please encourage friends and family to visit, it is a very interesting building and we are so lucky to have the windmill on our doorstep. We look forward to seeing you in 2022.

Contact details:
contact@laceygreenwindmill.org.uk
or
jane@laceygreenwindmill.org.uk

The World of Dance



The world of dance boasts a multitude of benefits, not only physically, but also mentally. When starting our Bumble Ballerinas and Tiny Tappers classes at age 2, students at Natalie Jane Dance School often continue classes to explore the joy of movement in all the different styles of dancing we offer. Quite often, this hobby develops into a love and adoration of dance, staying with them throughout their childhood years into adolescence.

Whether it be jazz or acrobatics; an intense class working on strength, power and flexibility, or ballet; demonstrating immense control and precision required to achieve simple elegance and grace, dancing encompasses huge benefits for the body. Tap classes are very popular, encouraging co-ordination and multi-tasking to complete complex, rhythmical sequences with your feet, all with a smile on your face! It's easy to see the intellectual benefits, as well as the physical.



They say dance is good for the soul, and we completely agree, and more! The importance of switching off from the strains of life, in a safe, fun class is incomparable. The physical movement, socialisation, and the goals you achieve in classes, boost endorphins, flooding your brain and body with positive energy, and putting a smile on your face.

Every week in the Village Hall
www.njdance.co.uk



BOURNE END SWIMMING CLUB



Offering the perfect balance of a friendly environment with competitive opportunities, our philosophy is to provide all members with the chance to swim to the best of their ability, regardless of their aspirations....

- Flexible swim times with low membership fees
- Up to 4 hours of swimming each week (Spring 2021)
- Using the fantastic pool at Wycombe Leisure Centre
- High ratio of coaches to swimmers
- Swim England Qualified Coaches
- Swimmers need to be at Swim England Learn to Swim Stage 6

BE Involved
BE Inspired
BEJSC

Contact
us now for a
FREE trial

www.bejsc-swimming.org.uk
join@bejsc-swimming.org.uk

Computer Problems?

Call 01844 220005

No fix no fee

We support office and home based systems
PC repairs and upgrades

We are based in Princes Risborough

We can collect and return your equipment

Costs from as little as £20 ex VAT.

Senior engineer with over 15 years experience

Microsoft and Cisco partner



www.jinca.co.uk
established since 2004

OVENPROUD

To book your oven in or to ask for a quote



Call **01494** ★

488744



Ovenproud
"the best you
can get in domestic
oven cleaning"

Ovens • Agas • Grills • Hobs • Extractors • Microwaves • BBQs



Speen C of E School with Little Apples Pre-School

• For children from 3-7 years old •

For enquires about this GOOD small school
with Excellent RE

(Ofsted and SIAMS inspections 2019)

Please contact the Headteacher

Mrs Jacquie Coles

Tel: 01494 488321

Email: office@speen-cofe.bucks.sch.uk
www.speen-cofe.bucks.sch.uk
Flowers Bottom Lane • Speen HP27 0SX

Thursday Coffee Mornings

The idea for serving coffee, tea and biscuits between 10.00 and 12.00 every Thursday morning was put forward many years ago by W.I. member Jill Baker who is sadly no longer with us. Ever since then it has proved very popular with many village residents.

Anyone is welcome to just turn up, whenever they feel like it and, for a small payment, they enjoy a biscuit with a cup of tea or coffee over a friendly and informal chat.

Conversation is usually lively and diverse, covering whatever topics are of interest on the day.

I sometimes wonder if this is where Richard Osman found his inspiration for his famous Thursday Murder Club. So far (and luckily), we have not yet had any murders to solve!

Joking aside, these mornings are also a great opportunity for newcomers to meet local residents and also to get some lowdown on what is going on.



The hot drinks are served by two volunteers who are on a rota of about 14, which means they are on duty every one or two months, according to their choice.

Most of the volunteers have been doing it for several years and many have struck up friendships with people they have met through volunteering.

The Village Hall Committee makes the small meeting room in the hall available to us and any profits we make are returned to the Hall.

If you are interested in hearing more, either about volunteering or about coming along to meet us, please contact Val Webster on 01844 347106 and, if I do not answer, please do leave a message.

Windmill WI



Michael White was our speaker at our November meeting. Michael called himself 'The Accidental Actor' and kept us entertained with his slides and stories of himself as a comedic actor.

At the end of November a group of us went to Waddesden Manor Christmas Market. Although it was a very cold day we had a lovely time. We ate our lunch in front of the manor listening to carols. The stalls were very good and we managed to buy some Christmas presents.

cooked by caterers, which was lovely. This was followed by singing of carols and exchanging our Secret Santa presents.

We meet at Lacey Green Village Hall, on the first Wednesday in the month (except January) at 7.45 pm. If you would like to join us you would receive a very warm welcome.

Wishing everyone a healthy and happy New Year.

Ann Bartlett



At the beginning of December we had our Christmas meal

BETSY WILLIAMS

SOLICITOR



INSTRUCTION TAKEN IN YOUR OWN HOME



Betsy is a qualified Solicitor who comes to you to help with:

- **Wills • Probate • Inheritance Tax planning**
- **Lasting Powers of Attorney • Trusts**
- **General elderly client work**

Betsy, you were a real star and made what, for me, would have been a difficult task a really pleasant one due to your kind understanding and patience and of course, your lovely sense of humour! Thanks again Betsy."

Mrs T

"May I say what a pleasure it was working with you. You are a considerate professional, not to mention a lot of fun! Thank you for your unending patience."

Mrs K

Call: 01844 342083
for a free no obligation chat
or email betsy@betsywilliams.co.uk

For more information and referrals - www.betsywilliams.co.uk

Change Your Life, Get Functional

As we age, we gradually lose our natural peak fitness and maximal body function from our late teens onwards.

Whilst there's plenty we can do to arrest this natural decline, the sad truth is that many of us gradually reduce our daily movement as we age, without thinking of the consequences.

Sedentary careers have succeeded the more manual and active jobs of yesterday. The development of machines and gadgets has made our lives easier and they perform many manual tasks for us now.

As we age, our hobbies and interests become less physical.

A healthy aspect of modern life is that many of us have more leisure time, and whilst going for a walk, run or bike ride is great, no single activity will preserve all your joint movement.

What should you do

The easiest, cheapest and most obvious step is to bring more movement into your daily regime.

Simply move more, and think about your movement – are you taking all of your joints through their range of movement on a regular basis?

Try this - In the evenings, sit on the floor instead of your armchair for an hour or so, whilst you watch TV, read, listen to music, etc.

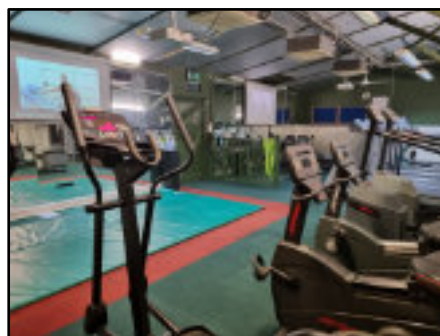
If you are able, try sitting cross-legged, or with your legs splayed out in front of you, sit on your heels with your toes tucked under your feet, sit on your heels with your feet flat on the floor, sit in a squatted position, lie on your stomach, lie on each side and generally try as many positions as you can.

Don't look for and then settle on the most comfortable position – keep changing.

No doubt you'll find some positions more challenging than others. Don't avoid them, work on them until they become comfortable, like they once were.

Keep a full range of movement in your arms and shoulders. Stretch upwards, circle your arms forwards and backwards. Think about what movements your body is capable of and practice these movements daily.

Functional Training



Functional Training is a very misunderstood concept. Few of those who've even heard of it really have any clue what it means. A common misconception is that functional training involves lifting or throwing around heavy weights – it doesn't!

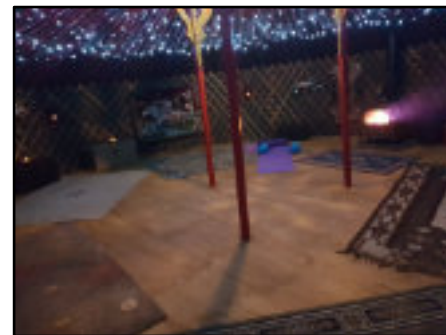
Functional Training simply aims to improve, maintain or regain all the movements that any healthy person is given the ability to do.

Join an exercise class where you're made to do exercises that you wouldn't choose. Where they make you use a wide variety of machines. Where they make you do exercises and stretches that you don't like and can't do at first!

The group training classes at Woodbyne will definitely improve your functional health.

The classes target range of movement, flexibility, core strength, posture, balance as well as improving your cardiovascular strength.

Join a Yoga Class



Similar to a good exercise class, a Yoga instructor will guide you through movements that you find challenging and would probably rather not do anymore. But these movements are highlighting where you have lost function. These difficult movements are the ones you need to work on.

A Yoga Instructor will guide you through these movements in a gentle, safe and progressive way. They will ensure you improve rather than exasperate any functional issues.

Yoga has many additional physical and mental health benefits too.

At Woodbyne we hold three weekly Yoga sessions in our Mongolian Yurt – which provides the perfect ambience for Yoga.

Two of the weekly sessions are "Pay as You Go" at a very reasonable cost – so give it a try – it's life-changing.

See www.woodbyne.co.uk for details of all our classes on offer.

Paul Johnstone

Priority Service Ltd



- *Cleaning - Regular*
- *Spring Clean*
- *End Of Tenancy Clean*

01844 275151

Friendly, local and professional service



Fiona Michaels Flowers and Events

bespoke floral designs for weddings, parties, funerals, special events or just because. Using British grown, seasonal flowers wherever possible and sustainable, eco-friendly wrappings, we pride ourselves on providing fresh, natural blooms with a truly personal service to all our clients.



We provide full design and management services for your special event. We work with a variety of venues, caterers, DJs, event hire companies and photographers to oversee the entire planning and design of your event whether it be a simple dinner at home or a lavish celebration

A Country Florist with a hint of City Chic
weekly hunches|bouquet delivery|wedding flowers|funeral tributes|party arrangements|container gardening|planted gifts|event management

Fiona Michaels, The Studio, Idle Corner, Lacey Green,
www.fionamichaels.com | hello@fionamichaels.com

Timpson's Meat, Poultry and Game



We are a small catering butcher based in Saunderton.

We visit market daily to ensure we supply high quality, fresh produce.

Open Tuesday - Saturday

FREE local delivery

www.timpsonsmallholding.co.uk
timpsonsmallholding@hotmail.co.uk
07870 755981



WESTMEAD Plumbing & Heating Ltd

Proprietor; Derek O'Shaughnessy
Jacaranda, Main Road, Lacey Green.

Qualified Local Tradesman, with over 30 years experience. Offering a comprehensive plumbing and heating service.

For RELIABLE and friendly service,

Phone ; 01844 275908

Mobile; 07785 326966

Email; westmeadplumbing@talktalk.net

All enquiries welcome



Member of the
Chartered Institute of
Plumbing and Heating
Engineers.
Gas Safe Registered



Hallmark and the Village Hall

Lacey Green Village Hall Management Committee would like to thank all those generous villagers contributing towards the cost of printing the four quarterly copies of Hallmark; too many to thank each of you personally. Contributions come in all year round so it's never too late.

Remember Hallmark is a way to communicate to every house in the village. It keeps you informed of what's going on and is a means of bringing things you might feel strongly about to attention. E.g. speeding through the village can be reduced by people not parking on the pavement which also stops people having to walk in the road. Come on, get it off your chest – I just did.

The Committee have been working on raising money to pay for re-paving the VH entrance area and resurfacing

the car park. It's not just the infirm - of which there are a considerable number - and very young children who need assistance to cross the car park but it precludes other events, e.g. where high heels might be involved. It will also provide opportunities for outside activities and better parking capacity.

We are now in a position to go ahead with this and are in the final stages.

The Hall is a non-profit organisation so charges cover utilities and maintenance. You will all be aware that these charges are going up. We ask users to switch off taps, lights and heating and try to leave the hall as they find it to keep charges down. Please don't forget.

The Committee, which includes a Chairman, Treasurer, Secretary



and Bookings secretary; Hallmark and website editors, Advertising secretary and reps from village organisations, all work for free. The committee meet six times a year to discuss issues such as charges and deciding how income should be spent. They are duty bound to do this wisely and for the benefit of all hall users. All accounts are examined and certified by an independent qualified accountant.

The AGM is a time when you can come and scrutinize what we do. 8pm Tues 8th March at the Hall.

Community Planning Group

As you may be aware, Lacey Green Stores closed on Christmas Eve 2021, having operated at the Village Hall for over 12 years.

As a consequence, the work of the Lacey Green Parish Community Planning Group has come to an end. The Group was formed in 2005 to enable local people to work with local councils to provide and support local community initiatives.

The LGPCPG, under the chairmanship of the late Tony Molesworth – and working with the Parish Council and the Plunkett Foundation - produced a Parish Plan after consulting with the community. Resulting from this work, the areas identified where community benefits could be made included:

- Youth facilities
- Village services for post office and shopping
- Affordable housing

Lacey Green Stores, together with the Outreach Post Office initially with Hampden and later with Naphill, hosted by the Village Hall, was set up as a result of the study, the previous village shop and post office having recently closed.

With the onset of Covid and the increased use of alternative shopping methods, usage has declined and the decision was made to close the shop. It is a credit to all the many volunteers, those that have used the Store and the Village Hall, that the Stores has served the community for so long.

It is hoped that a new shop will be arriving in the village before too long and we all wish it well.

The Group felt it important that measures are taken to protect any residual funds so that future community improvements for the Parish can still be made.

To ensure that funds are protected for this purpose it is anticipated that a sum of £3,500 will be handed over to the Parish Council to set up a community fund that can be accessed by local groups that have community backed projects. This fund to be split between the villages which make up the Parish so that all can benefit from the projects accepted by the Parish Council.

Paul Rogerson

Treasurer - LCPCPG

Horticultural Society History

2021 marked the 40th Anniversary of the founding of the Loosley Row and Lacey Green Horticultural Society in 1981. However, the origins of the Society can really be dated back to the beginning of Hallmark and Issue No 1 in January 1970. The sub-editor was Edward Flintham of Ardengrove in Lacey Green. He wrote a series of articles in the first 13 issues, entitled "In and Around Your Garden", which ended in January 1972 when he was due to move away. Ernie Rivett, who lived at Stoney Haven in Lacey Green, immediately volunteered to write articles on gardening, saying he had spent 37 years involved with the agricultural, horticultural, and seed trades. His offer was instantly accepted, and his articles entitled "Gardening Month by Month" appeared from March 1972 right through to May 1984, an amazing total of 74 articles.

Ted Janes (as editor of Hallmark) once told me that he appreciated how enthusiastic people were for the articles on gardening that had been written by local experts since 1970. In November 1980, Ted wrote that Hallmark was calling gardeners together to explore the possibility of forming a Horticultural Society or Gardening Club. Apparently, nobody was lined up for any particular duties.

Ted was, of course, responsible for suggesting many ideas that led to events and new village organisations. He also had significant skills in persuasion, and at the 1981 meeting, around 35 people enthusiastically accepted the suggestion of a new Society. Officers were appointed, with the Chairman being Ernie Rivett (the prolific gardening writer in Hallmark), the Secretary was John Plowman, and the Treasurer was Brian Wicks.

The object of the Society was set "to foster an interest in horticulture particularly for the benefit of those who are not especially knowledgeable". Within 5 years the membership had grown to about 100, a membership number that has stayed fairly similar ever since. However, there is only one person who was at that 1981 meeting and has been a member ever since, Judy Wicks.

At the inaugural meeting, 10 people were elected to a Committee. Any society will only survive with a committee who are willing to do the work required, and those first 10 committee members held their first meeting just 6 days after the inaugural meeting. They had already drafted a constitution, and established meetings with speakers on alternate months, and a mini-show. Over the next 40 years, 61 people have served on our Committee. Looking at

our archives, in the early years, many Committee members only stayed for 3 or 4 years, whereas now people tend to stay much longer, and as I write, we have 7 people who have been on our committee

for over 10 years. The longest serving is Linda Taylor at 27 years.

Of course, the most crucial person on a Committee is the Chairman and we have had 7 different people in that position. The first one was Ernie Rivett, followed by the unforgettable John Spurry, then myself (Michael Hardy), followed by Denis Croucher, Peter Pilkington, Terry Fendom, and Alison Shreeve who holds the distinction of being our first Professor as Chairman, our first lady as Chairman, and has been in office the longest, which will be 11 years in March 2022.

Our constitution allowed for an ex-officio President and Vice-Presidents. We started off with four Vice-Presidents, and now have two, Judy Wicks and Ginnie Brudenell. Despite different people being asked, no-one seems to have been prepared to be President until I was asked in 1996, having been on the committee for 10 years, including 5 years as Chairman. I also took on the role of Archivist, which all means that I must now have held some role in the Society for the longest time, currently 36 years.

Members have to be kept informed of activities to keep their interest, so as well as reports in Hallmark, occasional newsletters were distributed to members. Nowadays, members are kept up to date by electronic means with news and newsletters instantly delivered by email.

The virtual world has also now reached other aspects of our organisation, with Zoom Committee Meetings, an online AGM, and a virtual show and other competitions using competitors' photos, and judges "working from home". However, we continue to keep people informed of our activities with regular articles in Hallmark.



Most years have had at least five meetings in the Village Hall on alternate months with speakers, making around 200 meetings held so far, only interrupted by Covid in 2020. They were mainly on gardening topics, but also on wildlife, rural matters, travel to places far and wide, and other subjects, even asking me for some talks on church and cathedral architecture. Of course, some speakers turn out to be more entertaining and knowledgeable than others. Favourite speakers would be asked back again, the most popular to be asked to keep returning must be John Tyler.

We have also had a number of Special Meetings over the years, when we have asked somebody well known, and sold tickets for the event. They have included a One Man "Antiques Roadshow" with David Battie in 1991, an evening with Pippa Greenwood in 1994, and an Antiques Valuation Evening with Bonham's in 1998. They have all attracted good audiences, but require tickets to be sold to pay for costs, and hopefully make a little revenue as well.

Our shows started modestly with just 6 classes in 1981. In 2017 we started having 2 shows a year, when at the Spring Show in March we had 173 entries from 58 entrants, followed in September by 315 entries from 48 entrants, across 53 classes. The shows take a lot of organising and a lot of setting-up on the day, which have always been well organised by our 5 show secretaries, the longest serving have been our first one, Bill Cleaver at 12 years, and our current one, Adam Heeley, at 15 years. In looking at all the statistics, I also realise that between 1991 and 2019 I must have presented nearly 200 cups. Since our first cups were awarded in 1987, 65 different people have won cups, with 4 of them winning 15 cups or more. Bill Cleaver won 15 cups, Les Hazell and myself have each won 17, but way out in front is Alison Shreeve, having won 30 cups in our last 16 shows.

Our committee deserve special congratulations for devising their own systems and layouts to enable us to run our September Shows in 2020 and 2021. Their ideas for running a show whilst working within the Covid rules and

recommendations were fully accepted by the Village Hall Committee, and Lacey Green was one of the very few villages to host actual Horticultural Shows in 2020 and 2021.

In recent years our Committee members and others have got more involved with the Village School, initially organising competitions, then giving help and advice in various ways. In turn, since 2017 children have been made more welcome at our shows, with special classes and awards, particularly at our Spring Shows, which have seen entries from over 30 children.

Between 1985 and 2004 there were nine "Village Days". For the first 5 some of our members kindly opened their gardens for us which were much appreciated by those who visited them. We also successfully ran a Plant Stall on each occasion. The generosity of some people was overwhelming, I will always remember Stan Williams having to make 3 journeys in his car to bring us all the plants he had grown.

By 2008 the Society wanted to run a plant stall again and it was agreed that it could be near the windmill on the Sunday of National Mills Weekend in May. This then occurred every year until 2019. Again, due to the generosity of our members, they were very successful events attracting many people to return each year. With the windmill shut in 2021 for Covid precautions, the Plant Stall was moved to the Village Hall Car Park, where it is likely to continue in the future, as somewhere with more suitable facilities, such as parking.

Outings by coach have been arranged since the mid 1980s, many famous gardens being visited such as Kew and Wisley. Personally, I prefer the more informal visits to local gardens which one may never have heard of, for which we have received special invitations, through personal contacts. I particularly remember one at Great Hampden, and we have

returned to the very special garden of the vegetable grower at Wingrave who takes his produce to shows nationally. His methods of growing, and array of greenhouses is truly amazing, especially when you realise that they are all created from one man's passion for his subject. His enthusiasm inspired some of our members.

The Society's 40th Anniversary was celebrated in the Village Hall on Saturday 31st July 2021 with a Pig Roast accompanied by live music. The 30th Anniversary had been celebrated in a similar way, but the Society has a 40 year history of holding social events for its members, as the first was a "Cheese and Wine Meeting" on 18th November 1981. Tickets were sold for £1.50 and the committee minutes tell me that Mr Rivett and Mrs Wicks were in charge of cutting and distributing the cheese. Mr Plowman, Mr Evans, and Mr Wicks had agreed to act as wine waiters - with the stipulation of a maximum consumption of half a bottle per head.

A similar format was then used after each AGM for a few years. However, many people will still remember the Socials from 1987 to 1996 that we held at Speen Farm (Home of Rest for Horses). We used the Barn and a large marquee for just over 100 people. Our catering organisers at the time did sterling work, they were Janet Tear, Barbara Tempest, Patty Hammerton-Fraser, and Ginnie Brudenell. As Chairman for 6 of those years I had a great sense of relief once each night was over. There were always some items that we could rely on Brigadier John Spurry to provide, the wine, the beer, and his own obligatory but inimitable games of Bingo.

Continued on next page.....



JSQ FARM
ENTERPRISES

AL-KO
QUALITY FOR LIFE



**WHEN IT COMES TO MOWING LAWNS,
AL-KO MAKE THE CUT.**

Whether you like cutting your lawn or not, AL-KO have the right product for you. With a complete range from hand, electric, cordless and petrol lawnmowers, all the way to the latest robotic technology, all products are engineered in Germany and designed with 'quality for life'.

Lawnmowers from £69

Tractors/Ride-Ons from £1799

Robotic Mowers from £999

Call us on 01494 489806 for your free brochure or BUY ONLINE at www.Jsqfarmenterprises.com



JSQFARM 

Horts Soc History... continued

In the most recent years the whole committee have regularly taken on the task of catering for our Pumpkin Suppers and have developed what always appears to be a very smooth and efficient operation which produces very good food. It has earned such a reputation that it attracts many people from the village who probably have no real connection with the Society.

One essential Officer of any Society is, of course, the Treasurer. We have had eight over the last 40 years, the longest serving being Brian Dockerill (1996-2004) and our current Treasurer, John Burnett, who was appointed in March 2005. The fact that somebody has been in position for 16 years is never a problem to me, and certainly not when they have done as good a job as John has, and I know will continue to do.

As I write this, I realise that for the first 17 years of the Society's existence we were in the old Village Hall, which in 1981 had just been renovated and enlarged. It was not an attractive building outside, but inside seemed very comfortable, especially for what was originally a 1916 Army hut from Halton, brought to Lacey Green in 1923. I know that the new Millennium Hall always impresses people who visit for the first time, because they always remark on it. Despite whatever can be done "virtually" now, our Society would not exist, and could not continue into the future without our Village Hall.

With the careful work of our Treasurers over the years, whenever possible we have always treated our special events as opportunities to raise some funds for suitable charities and local good causes. Trawling through our

accounts and other records, I calculate that between 1981 and 2020 we have been able to donate a total of £6,650 to a variety of organisations, which includes £3,225 at various times to the Village Hall.

After a difficult two years for everybody, we all look forward to being able to return to "normal service" for the future.

Michael G Hardy

President, Loosley Row and Lacey Green Horticultural Society

Fights and Rioting at Lacey Green

On Sunday, July 1st 1838 the Lacey Green Parish Constable, Solomon Claydon, saw several men fighting and insulting people in Lacey Green. When he went to Ginger's Beer Shop (now The Black Horse public house) at 3 o'clock to tell Ginger to shut up shop, there was a great deal of noise inside from as many as 20 people, which had started as a dispute over a pint of beer.

On returning two hours later he found the beer house still open, the same people were there causing a disturbance, some were drunk and there was much swearing. He cleared the house and they went out peacefully.

The Constable went home to Loosley Row about six o'clock, but had not been there above three minutes when he was told there was another fight in John Dell's Cow Meadow, Lacey Green.

At the same time a religious Camp Meeting was taking place in the Kiln road with two or three Preachers – one was Mr Tompkins, Wheelwright of Loosley Row, who was standing on the back of a wagon preaching: the praying and singing went on for two hours. After the Camp Meeting ended, some of the congregation retired to Ginger's Beer Shop, but the preachers did not go in.

Another fight then began nearby, between two services at St John's Church. Witness Mr William Amos Westoby, a Solicitor staying with Sir George Stephen and family at Loosley House, returning at 7.30pm from church, saw many people assembled at the Beer Shop and spoke to Ginger on the impropriety of allowing people to assemble there on the Sabbath Day, estimating between 10 to 20 drunken people inside.

Many other men and women were also in the road between the Chapel and the beer shop, all creating a disturbance and making a lot of noise.

(The case was held at the Magistrates' Chambers, Aylesbury on July 14th 1838. Two men were bound over to appear in their own recognizance of £20 each at the next Quarter Sessions).

(Extracts from article in the 'Bucks Herald' newspaper July 21st 1838).

Rita Probert

History Group

VILLAGE ENVIRONMENTAL SERVICES DOMESTIC DRAIN SERVICES

Proprietor: Dennis Cook
Est. 1979

24/7
CALLOUT
SERVICE

BLOCKED DRAINS?

CALL US DAY OR NIGHT

FAMILY RUN BUSINESS SINCE 1979
BLOCKED DRAINS CLEARED • REASONABLE RATES
NO EXTRA CHARGE FOR EVENING, WEEKEND
OR BANK HOLIDAY CALLOUTS
CCTV DRAIN SURVEYS
FULL PUBLIC LIABILITY INSURANCE



07850 635 844
01296 624 221 (MESSAGES)



Community Tennis

The club started with just one hard court which was completed in August 1962 at a cost of just under £900. It was officially opened by the Bateman family on 1 September and was in use most weekends until Christmas, when snow prevented play until late March!

Fortunately, we don't seem to suffer these extreme winters anymore. This year, it has been relatively mild (so far), and the Sunday morning club sessions have generally been sunny. We normally experience a drop in attendance during the winter period, but these club sessions have had record numbers. Perhaps it's the weather or New Year's resolutions, but whatever, it's great to see so many.

On Sunday 9th January we took the opportunity to show members our new trophy for Club Of The Year which we received at the Bucks Lawn Tennis AGM in November. The award was for the progress that the club has made over the last few years and the substantial upgrade in facilities. The Japanese have a great word "kaizen", meaning continuous improvement and certainly the club cannot afford to rest on its laurels.

This year, our focus is on building a clubhouse by the courts which has toilet facilities and an open plan kitchen with plenty of glass facing the courts. We have just appointed a local architect and we are looking forward to seeing his ideas.

This is going to be an expensive project and will require a lot of effort from members in terms of fund raising and will be reliant on us being successful with grant applications. It's not going to be easy, but we hope to complete the building in 2023 or early 2024.



A clubhouse will obviously have numerous benefits, not least allowing us to host our own events by the courts. Social events are an important part of the club, and we try to do as many as possible throughout the year.

In late November, 41 members had a very enjoyable Christmas dinner at the Pink and Lily. It's not easy catering for hungry tennis players, but the Pink and Lily produced excellent food with good service too. It was a lovely evening and the club managed to raise some £300 via a raffle kindly organised by Jackie Coles.

I was also delighted to be invited to Dan's beginners' class Christmas dinner at the Black Horse. The word "beginners" does them a disservice, they have improved massively over the past year or so. Anyway AJ, the new Black Horse chef produced a fantastic Christmas menu which we all enjoyed.

Looking forward, we would hope to host our annual gin and fizz night (dependant on Covid), we have our men's trip to La Manga in June to look forward to and a very special celebration in July.

As some of you will have spotted above, it's our 60th anniversary this year. Look out for a big event and fund-raiser in early July. Meanwhile, if you're interested in playing tennis, our website and Facebook page have all the information you'll need. Come and join us, we have something for 3-year-olds to older players in their seventies.

Nigel Glenister

Helen Kearney

Professional Hair Stylist
with 20 years experience
in the comfort of your own home

Call mobile:

07778 447315

SAVE YOUR TIME AND FUEL COSTS

Shaun Guard TV & WIFI SERVICES

- Aerials - supplied, repaired & poor reception solved
- Satellite - Sky Q dish upgrades, discreet dish installation & foreign TV
- Internet - blackspots cured, data cables to your TVs / computer
- TVs - hung on your wall or set up & tuned
- CCTV & Door Entry - domestic installations

OXFORD AERIALS

www.oxfordaerials.co.uk

Call Thame 01844 259119



A Hills Electrical

Domestic Electrician

Free Quotes

No call out charge, No job too small
All domestic work undertaken.

Part P registered.

Call Andy 07864 128150

Hillsandy010@gmail.com

SELF-CATERING ACCOMMODATION

WINDMILL FARM, PINK ROAD,
LACEY GREEN, PRINCES RISBOROUGH HP27 0PG
TEL. 01844 343901

Email: windmill_farm@hotmail.com

WEEKENDS AND SPLIT WEEKS AVAILABLE
LINEN PROVIDED - SLEEPS 2-4
S.T.B. 2 STAR NON SMOKING

*Ideal for Touring, Walking, Riding etc.
Stabling available*

HEATHER BREED UPHOLSTERY



I am a local lady, fully qualified in
both traditional and modern
upholstery work. For a free quote &
advice call Heather on 0795 4176401



Please view my portfolio on Instagram or Facebook



@heatherbreedupholstery



HandmadebyheatherB

HOME TECHNOLOGY HELP

- MOBILE PHONE, PC/LAPTOP UPGRADE ISSUES
- TRANSFER PICS, CONTACTS, APPS BETWEEN DEVICES
- PRINTER PROBLEMS
- ANTIVIRUS/ OTHER APPLICATION INSTALLATION
- WI-FI/ BLUETOOTH TROUBLESHOOTING
- SMART TV SETUP



CALL DAVE IN LACEY GREEN ON:

07831 775142

NO FIX – NO FEE

Builder / Gardener

20 years of experience in all trades: Carpentry,
Plumbing, Electrics, Decorating, Repairs.
Also garden design and execution, brickwork
and fencing.

*No job too small
Friendly, fast and efficient service*

Contact Alexander 01844 347471
mobile: 073885 51754
iamandiciprian81@gmail.com

TUTORS

Experienced, qualified tutors offer coaching for:

11+ transfer test (assessment test also available)

All Key Stage levels, GCSE or AS/A level in
English, Maths, French, German, Sciences.

English as a foreign language (EFL)

Telephone 01844 347471 or 07884350939

Brian Turney

Brian's story

In 1949 on the 22nd of April a total legend was born, Brian John Turney (our dad).

Dad was born at Idle Corner in Lacey Green, and as he grew up it was plain to see he was going to be a farmer. He attended Lacey Green school and went on to Welsbourne secondary school.

He left school at 15 years old and went to work for Jack Lavonce where he lived in a small caravan in the back yard.

Dad's love apart from farming was motorbikes and he went on to build his own tribsters as he called it, a BSA frame and Triumph engine.

This is how he came to meet his Lynne (our mum) As he told everyone - the best thing he got from Marks and Spencers.

It was a cold and rainy day and mum was sheltering in the shop doorway when a voice said "you will get cold stood there" and that was the start of the rest of his life.

Dad and mum married in 1970, everyone gave it 6 months, and its now 51 years later.



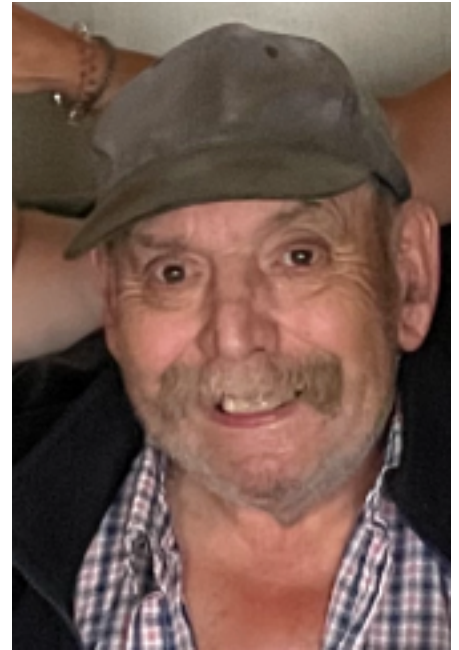
Dad and mum started married life living in a caravan at Little Horsenden farm at Stuart Macintoshes, his friend of a lifetime which is where his first daughter was born in 1971. Michelle grew up and followed in her dad's footsteps and became a head cutter. Also known as a hairdresser.

In February 1973 we moved to Banbury where dad became head tractor driver at Ashdrop estate working for the Hewitts. It was then in February 1974 Marie was born, "his tiny" as he called her because she was born premature. Marie also followed in dad's footsteps and could take a bike apart at the age of 18 months.

Then in 1978 we moved to Chinnor Hill where dad was farm manager/contractor for Arthur Andrews. This is where we found our love for horses and dad had his dream car, his prize Dodge Charger which was admired by all.

In 1980 dad and mum made the decision to move to Lacey Green to live with our nan as our grandad had died the year before and she was struggling on her own.

It was then that dad set up as a farm contractor and soon developed his legendary skill for



hedge cutting. The Chilterns will never be the same again, but we will have square clouds now he's up there.

Our dad was one in a million and loved by all that had the privilege to meet him.

He was known for his sharp wit, funny sense of humour, impeccable kindness and his ability to do anything for anyone.

A true gent and the best daddy you could ever have wished for, and our lives will never be the same again.

Michelle Turney





ballet technique
 acro street flexibility
 performance tap
 modern jazz



**From ages 2+, with
 new Adult Classes**

Lacey Green • Chinnor
 Monks Risborough
 Holtspur • Beaconsfield

07855 296242
 natalie@njdance.co.uk
 www.njdance.co.uk

Speen Pilates: For "Every" body

ONES TO ONES ON STUDIO EQUIPMENT



One to one and One to two tuition offers accelerated learning and results, the Reformer uses spring loaded weights to improve your posture, strength and stamina leading to a lengthened, toned body.

GROUP MAT CLASSES (MAX 4)

Pilates aims to enhance your posture, strength and flexibility, body tone, stamina and general fitness whilst releasing unnecessary tension.

All details of group classes listed on the website

For client's comfort and safety, the studio operates to the highest standard of hygiene and social distancing guidelines are implemented.

A HEPA air filtration system is in operation

Amanda: 07733 307475 www.speenpilates.co.uk

Happy Wanderers

November 2021

A walk scheduled at the end of November is at the mercy of early winter weather so it was very gratifying to find the day dawning bright and clear with just a hint of frost. A total of 19 members plus 3 dogs assembled in the Lane End village car park. Peter and Jo Clew had offered to lead the walks, one of about 3.5 miles and one of a shorter distance.

Both walks started off across Handleton Common, one of the many commons surrounding Lane End. The route initially took us towards the M40 bridge which separates Lane End from Wheeler End but short of the bridge we turned off on to a path which ran parallel to the motorway. The traffic noise was considerable but we soon turned away on to a path leading to Bolter End. The ground was level with pleasant walking along side open fields containing several inquisitive horses.



After we reached the Bolter End road the three short walkers, led by Jo, branched off to follow a wooded path back to the Lane End car park. The remainder of the walkers were led by Peter on a circular route through Finings Wood and then into open farm land towards Frieth. The views across the countryside were delightful, especially in the sparkling sunshine and the walking was mainly level with no stiles to climb.

The walk skirted Moor End common, which is designated a SSSI, before turning back towards Lane End. The walk finished by crossing Ditchfield common. The majority of the walkers had Sunday lunch at the Grouse and Ale in Lane End and a very convivial time was enjoyed by all.

2nd January 2022

It was a Happy New Year as the temperature went up and the sun came out. We'd had a lot of rain and everywhere I went was deep in mud leaving me with wet socks and lucky to still have my boots on.

Just in time - the Friday before - I discovered a suitable route. Walking across the field starting at Grymsdyke opposite the school there was plenty of room to skirt around the muddy trail, although horses had made the long grass lumpy. This footpath comes out at the top of Smalldean Lane; then right and 100 yds down we turned left onto a wide trail through the woods heading towards the RAF base. This lane had been fed with stones that made it solid so it was mostly just surface mud, slippery if you're not careful. Again we could skirt around the few places that held water. Many of the smaller trees had been felled and abandoned making it look like a hurricane, but more open than usual.

There were several people out and about walking their dogs and we all seemed to meet up just before the north side of the RAF base where the path swung right. We watched the dogs playfully chasing after each other for a couple of minutes before continuing our separate ways.

There were some interesting buildings just inside the mesh netting of the base, some like very tall observation pill boxes with slots to peek out. Just past these was a large two storey, seemingly disused brick building with unusual features that didn't give a clue as to what it was for.

Past here the trail then very quickly dropped down some 100ft. We turned left before the bottom and started up again but fortunately it was not so steep. This was a footpath and would have been muddy but for being on a slope. The slope eased and we paralleled the rear of the RAF



base. Swinging left and levelling off we left the path and made our own route through the woods, again to avoid the mud. We came out onto New Road just south of the base between that and the married quarters.

The base was built just after the start of WW2 in great secrecy. It was invisible to enemy because from the air it couldn't be distinguished from surrounding towns and villages - there was no runway. In fact Bomber Harris used to fly and land at Stocken Farm and walk up to the base. The airfield here was just that - a field.

See <https://www.laceygreen.com/Sections/War2.php> for the full story.

We walked past the two WW2 planes out the front. One is a Hurricane, the other the more famous Spitfire. This information is not visible from the roadside, only from the base side - apparently too distracting for slow reading drivers say the council.

Then on and just where the base ends we swung left 50 yards and turned right back through the woods to where we first joined Smalldean Lane. Right this time to New Road and left towards the School - solid footpath, hooray! We turned into Church Lane - we were a little early.

Finally arriving back at the village hall we were greeted with mince pies and mulled wine. Also joined by old members no longer able to walk so far - a lovely finish to the morning I thought.

Leigh Axe

Bucks Council

2022/3 budget

The Council has published its proposed budget for 2022/23 showing how it plans to balance the books amidst an extremely challenging financial environment. While many other councils are struggling to meet the financial pressures, Buckinghamshire Council can balance its budget whilst continuing to allocate funds to key projects residents have asked for. However, this is only possible by making some difficult funding choices.

As with all local authorities, the biggest budget pressures come from those services the Council are legally required to provide, particularly social care for both adults and children. Overall, 57% of the net budget is spent on these services. This also needs to be balanced alongside spending on the biggest priorities for Buckinghamshire residents, like roads and pavements maintenance and improvements, tackling climate change and supporting our residents and businesses to build back from the pandemic.

It means difficult choices are being made and the budget proposals include the following ways of raising the necessary revenue for 2022/23:

- Increasing Council Tax in Buckinghamshire by 3.99% (a rise of £1.23 per week for the average Band D property). This includes a 2% precept to help pay for Adult Social Care
- Reducing some of the funding for the Community Boards
- Using a one-off sum of £1.36 million from the General Fund to balance the budget and mitigate risk in 2023/24

Making these decisions allows the Council both to balance the books (a legal requirement) and

still continue many key projects such as:

- Fighting Climate Change by planting more than half a million new trees in Bucks, one for every resident
- Cleaning out every one of the 85,000 gullies in the county
- Spending more than a hundred million pounds on roads and pavement improvement programme
- Enhanced street cleaning in local communities – part of the Council's 'Big Bucks Tidy Up' programme

More information on the Council's ongoing budget process can be found on the Council's website news page.

Plane and Patch Programme

£17.7m of the extra £100m mentioned above for Buckinghamshire's roads and pavement improvement programme will be spent on smaller surface repairs (known as 'Plane and Patch').

Surfacing Patching works should now have been completed on Chapel Hill from Grubbins Lane up to the Hampden Road. At the time of writing these were scheduled to be completed in mid-January.

Consultation on new political map

Following a public consultation on council size for the authority, the Local Government Boundary Commission has decided that the number of councillors in Buckinghamshire should be 98.

The Commission wants to hear what residents and organisations think about their local area. A 12-week consultation on the proposals will run until 4 April 2022.

The Commission will use local views to help it draw up proposals for new ward boundaries.

There will be a further round of consultation once the Commission has drawn up those proposals.

The consultation page can be found at: [Local Government Boundary Commission for England Consultation Portal \(lgbce.org.uk\)](https://www.local.gov.uk/boundary-commission-for-england-consultation-portal)

Parking Restrictions for Lacey Green

Following both Informal and Statutory Parking Consultations, on 8th October 2021 the final decision was taken that parking restrictions are to be implemented as per Highway Code Rule 243 on safety grounds on Main Road Lacey Green (as advertised and proposed in the Statutory Consultation).

This will undoubtedly make the area close to St Johns School, much safer, not only for the children but also for all road users.

Due to material's delivery time and Christmas holiday the commencement date for construction for this will now be Monday 21st February 2022.

Robert Carington

robert.carington@buckinghamshire.gov.uk 07515 997953

Parish Council

Let's hope that this year will be better than the end of last year for some of our residents. We have had a series of accidents outside the school, and a couple of break-ins.

We contacted Transport for Bucks in light of the accidents on Main Road and have been told the delay to a January 2022 implementation date (editor's note - now Feb 21st) of the lines is mainly due to the lead-in period for undertaking civil works, and so TfB have limited control over this date. They also added that it would be very difficult to get a Streetworks permit for doing any work during the Christmas period - permits are restricted to emergency works - e.g. gas leaks, water mains bursts etc. I think this is because years ago people across the country were sick of roadworks over the holiday season!

Finally most supply chain partners have a shut down over the period (industry wide) and so even if we could convince someone in Streetworks this should be classed as an emergency it is unlikely we will find anyone to do it.

The lines are actually a thermoplastic (not paint). If the road is wet or has ice or snow on it, no contractor in the world will be able to put the new lines down. We're hoping for mild weather in January so as this can finally be completed.

We have noticed on the Lacey Green facebook page that there is some interest in community speedwatch, if that interest is still active, could we ask that you make contact with our clerk and we can provide details of exactly what is involved both with equipment and volunteers.

At the time of writing this, we are having the fencing replaced again at the playground, thanks to the agile users of the play area that find it easier to climb the fence rather than use either of the two gates provided.

Hopefully the new fencing will stop this dangerous behaviour and the self closing gate will help to keep animals out and children in.

Finally, if any residents wish to contact the parish council, please either email the clerk (see p33) or contact us to attend our meetings held alternatively in Speen and Lacey Green where the first 10 minutes of our meeting is set aside for you to comment.

Cathryn Davies

The Whip Inn

Good news about the Whip Inn.

To safeguard the future of the Whip Inn as a local pub in the village, and to protect it from being developed, the Parish Council have commenced the process of making it an Asset of Community Value (ACV).

However, in the last couple of weeks we have learnt that it now has a new owner. Ray Pullen who has been trading in Naphill as Ray's Kitchen will be taking it over from 22nd

January, and is planning to open for business sometime in February.

Ray commenced his profession as a chef on the Island of Sark. He subsequently travelled through Asia and the Americas learning many different cuisines and techniques of cooking.

Whilst living in Australia, Ray won the best steak sandwich award in Western Australia. After living in Australia and New Zealand he moved to the Isle of

Mull in Scotland and was Head Chef in a boutique hotel. Ray has also worked as a chef in Buenos Aires and at a hotel in Rock, Cornwall.

Ray told me as well as offering a variety of cuisines and dishes he will be stocking a comprehensive range of beers and beverages. We would like to welcome Ray and his partner Nathalie to the Whip Inn and Lacey Green and Loosiey Row.

Keith Bowler

The end of the Sewing Group

Do you remember when we got the new village hall? It was a lovely big space, but very echoing.

A group of ladies decided to try and limit the noise and reduce

the echoing sound by making wall hangings. This was before the carpets came. The hangings show aspects of village life. The ladies continued to meet once a week to sew, knit, chat, and drink coffee.

Their last meeting was on the 13th December for lunch at the Black Horse, membership having dwindled to four.

Sally Pilkington

Local to you

Lacey Green

We are bringing local producers to the village via a monthly market.

Foods, produce, crafts & more

The first Sunday of every month from

10:00am - 12:30pm - onsite cafe

Lacey Green Village Hall, Main Road,
Lacey Green, HP27 0QT

for further details or to make a booking,
please contact Fiona on ltybucks@gmail.com



chicken/
egg incubator

chicken/egg have 30+ years of award-winning creative marketing experience and we are egg-cited to offer our support to nurture start-ups and small businesses. Creating a tailored brand toolkit, we'll equip you with everything you need to hatch successfully.



We offer a FREE 30 minute consultation to discuss your needs and help you get cracking.

✉ karen@chickenegg.co.uk ☎ 07970732075

www.chickenegg.co.uk



Serenity Scents & Lifestyle
Hand poured candles & diffusers
with stunning crystals, home accessories
& gifts to bring serenity and peace
into your life!
#findyourserenity



www.serenity-lifestyle.co.uk



We believe that children learn best through play and exploration in a happy, fun and stimulating environment. We provide a varied range of activities to support our children's learning and development. In our bright, spacious setting with access to the surrounding playing fields. As a preschool, we recognise the importance of our role in helping our children prepare for the next stage in their life, whilst being mindful of the individual needs of our younger children.

Open Monday – Thursday 9.00am – 3.00pm and Friday 9.00am – 1.30pm

Children welcome from 2 years old

Do get in touch, we'd love to hear from you
07502 198405

manager@windmillunder5s.co.uk
www.windmillunder5s.co.uk



Lacey Green & Loozley Row Sports Club, Main Road, Lacey Green, Princes Risborough, HP27 0PL
Registered Charity No/ 1026976 Ofsted Registered No/ EY285035

Windmill Under 5s Preschool

The children returned after October half term to many happy days in the Autumn sun, playing in the crunchy leaves, jumping high on the trampoline and racing around on ride-on toys in the beautiful outside space. As the weather turned cooler, the children benefited from indoor exercise on the climbing apparatus and enjoyed toddler yoga sessions, practising their balancing and stretching. Learning activities focused on number recognition, counting and sequences, and rhyming patterns. Many imaginative hours were spent on the sand and tuff tables and in creation of art pieces to decorate the preschool with, from items they collected on their Autumn Trail. Around Bonfire Night, the children enjoyed firework themed snacks, crafts and excited discussions after many children had attended Fireworks displays in the area with their families.

A focus on exploration, reflection, kindness and thinking of others also took priority. In a child initiated activity, time was taken to notice and discuss the abundance of spider's webs that emerged in the outside area. As Remembrance Day approached, the children commemorated with a beautiful window display, a coloured rice, poppy tuff tray and biscuit decorating with red icing and chocolate buttons. The children also made cupcakes for their bake sale which raised a fantastic £50 for Children in Need.

All efforts then turned towards Christmas with the arrival of Elvis the Elf, who created lots of mischief for the children to discover on their arrival at preschool each day. Their days were packed with Winter or Christmas themed activities including tree shaped car tracks, festive play-doh, 'snowy' dinosaur landscapes and Frozen themed and flour-snowman fun. A Christmas sensory activity saw a tuff tray decked with cinnamon, cranberries, oranges and fruit frozen in ice for the children to

explore different textures and smells. An abundance of Christmas decorations, displays and colourings of Father Christmas were produced with extra-special, handmade Rudolf themed decorations crafted for their entry into the Village's Christmas Tree Festival.

In the last week of term, the whole preschool came together to celebrate with a heart-warming Christmas play. We saw the Three Wise Men 'going on a star hunt' to find baby Jesus, encountering everything from dancing cacti to mermaids along the way! We were delighted to invite a member of each family to watch the performance; a truly special moment for all involved. Fantastic costumes, singing and acting and a raffle and mince pie for the parents afterwards left everyone with more than just a sprinkle of festive cheer.

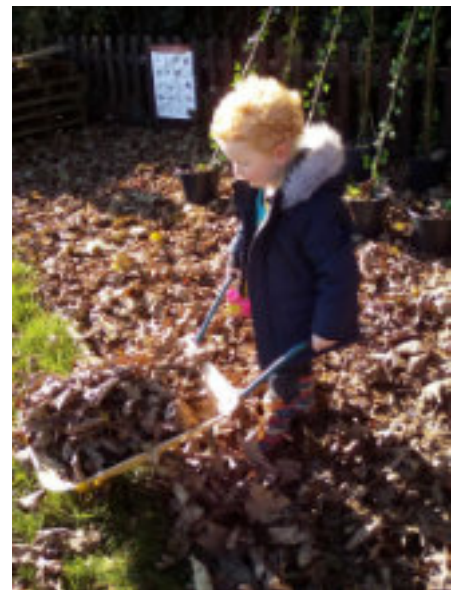
On the last day of term, all the children were invited to their Christmas party to enjoy a feast of party food including Christmas crackers. Bubbles, singing, dancing and games and a goodbye from Elvis who delivered a present for each of the children sent them off to dream of the magic that might lie ahead.

The Spring Term will see the children exploring winter animals and hibernation, day and night animals, people who help us, manners, mindfulness and independence.

If you would like to arrange a look around the preschool or enquire about a place for your child, please call or email Tracey Winfield (Preschool Manager) on 07502 198405 or email manager@windmillunder5s.co.uk. We are open Monday – Thursday, 9am - 3pm and Friday 9am – 1:30pm during term time and welcome children aged 2-5 years.

Pip Cartwright

Chairperson



Heavenly Bodies

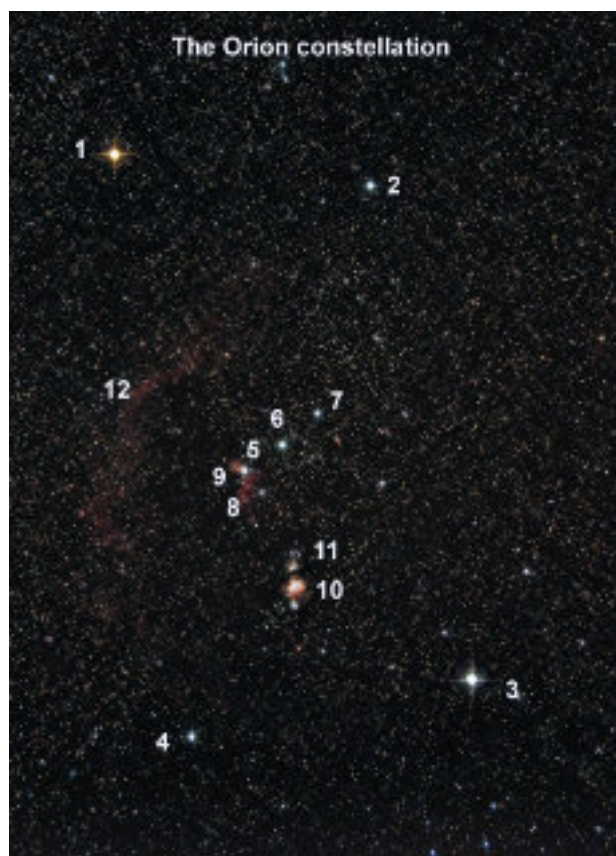
The contemplation of constellations can be one of life's most relaxing and rewarding pursuits. Up above, we see a slice of the Universe speckled with sparkling stars and other treasures at unimaginable distances from us. And it's all free-to-view!

February is the perfect time to delve into one of the night sky's most glamorous constellations – Orion, the Hunter. It looms over us from the south in the early evening, outlined by four bright stars. Top left is the fiery red-orange star Betelgeuse (1 on image) which is coming to the end of its life and could explode in a supernova at any time. Top right is the blue star Bellatrix (2), much younger and much hotter than Betelgeuse. At bottom right is the dazzling blue super-giant star Rigel (3) which is up to 24 times 'heavier' than our Sun and more than 360,000 times brighter. But being about 840 light-years away makes it appear quite tame. Lastly, at bottom left is another blue super-giant star named Saiph (4). It too glows much brighter (56,000x more) than our Sun but appears dimmer as much of its glow is in the invisible ultraviolet.

Looking within, 'Orion's Belt' of three stars (Alnitak, Alnilam, Mintaka – 5,6,7) stretches across the middle. Near Alnitak is the Horse head and Flame nebulae (8,9), just visible in the image I took here (more at www.flickr.com/photos/chrisdig/).

Below them lies the 'sword' which is the famous Orion Nebula and the Running Man Nebula (10,11) close by. These are vast clouds of dust and gas in the process of making new stars which light up the clouds. The nebula is further away than the main four stars at around 1,500 light-years from us.

Though the parts of the Orion constellation look like they are altogether, it's just an optical illusion. They are unrelated and at vast distances from one another.



The wispy red cloud on the left (12) is a nebula known as Barnard's Loop which is not usually visible to the naked eye.

Much closer to Earth are the planets in our Solar System which are on show this month. Firstly, we say farewell to Jupiter which is still visible in the first week of February, low down in the south-west near the Moon from 5.45-6.30pm. Venus appears as the 'Morning Star' before sunrise for several months. At around 6am on 26th and 27th of February, it can be seen with Mars and the Moon below it in the south-east (see sky chart).

As the Earth's tilt facing our star changes, Astronomical Spring begins at the spring equinox on 20th March, and a week later the evenings get lighter when the clocks go forward on the 27th. Enjoy your skies!



Chris Dignan

Organisation	Meetings	Contact	Phone	Email address
Happy Wanderers Walking Club	Full walk last Sun of the month 10.30	Liz Lewin	274961	relewin@btinternet.com
Horticultural Society	3rd Wed of Jan, Mar, May, Jul, Sep, Nov. 8 pm	Alison Shreeve		a.shreeve1@btinternet.com
LG Singers	Thursday evenings in term time at St John's School	Denise Kinnard		laceygreensingers@hotmail.com
Equus	Theatre, drama, and sometimes food	Fiona Quilter-Wood		artistic@equusproductions.org
Windmill Under 5s	Mon to Thurs 9.00 - 3.00, Fri 9.00 to 1.30	Tracey Winfield	07502 198405	manager@windmillunder5s.co.uk
Windmill WI (evenings)	1st Wed of month except Jan. 7.45 pm	Daphne Willash	01494 562455	daphne.willash@btinternet.com
High Wycombe and District U3A	4th Wed afternoon of the month	Theresa Hehir	01494 881170	hehirt@hotmail.com
Youth Club	Alternate Fridays - see laceygreen.com web site for details 7.30 pm	Leigh Axe	345216	leigh@laceygreen.com
Over 50s Pub Lunch Club	Black Horse. First Tuesday of the month	Yvonne Axe	345216	
Short Mat Bowls Club	Monday 2 pm	Leigh Axe	345216	leigh@laceygreen.com
LG Sports Club Secretary		Stephanie Dell	07768 831196	steph.dell@btinternet.com
LG Sports Club - Cricket		Jonathan Dell	07786 386912	
LG Sports Club - Tennis		Nigel Glenister	342771	ne.glenister@btinternet.com
LG Sports Club - Football		Ben Foster	344906	laceygreenfc@hotmail.co.uk
Karate	Monday evenings	Stephen Fincham	07540 531034	stevefincham@sky.com
Whiteleaf Bowmen	Wed, Thu and Fri evenings, Apr to Sep	Brenda Cordwell, Sec	01494 485037	www.whiteleafbowmen.org.uk
Bucks Council		Carl Etholen	07810 442617	cetholenn@buckinghamshire.gov.uk
St John's Church		Pat Rushmere	345452	richardsp44@btinternet.com
Scouts (Naphill and Hughenden)		Peter Byerley	01494 565955	
Parish Council		Frank Post		clerk@laceygreen-pc.org.uk
LG Windmill	Sundays and Bank holidays 2 to 5 pm April to September.	Jane Herve		contact@laceygreenwindmill.org.uk
Millennium Hall		Clive Hodghton	07751 541222	clive@laceygreen.com
Millennium Hall bookings		Karen Hodghton	07922 184 886	karen@laceygreen.com
The Black Horse		Sam Watson	345195	sam.watson105@gmail.com
Police		Andy Ralph	101	

Hallmark is published quarterly by the Lacey Green and Loosley Row Millennium Hall Management Committee, although opinions expressed in comment or contribution do not necessarily represent the collective view of that committee.

Our aim is to mirror the mark that the Village Hall makes upon our community, to publish the activities of all Village organisations, and to provide a forum so that the rights, the wrongs, the well-being of village life can be aired.

We welcome news from all the Village clubs, societies, church and school, stories of local interest and entries for the Village Diary.

A version of this printed Hallmark may be found on our website www.laceygreen.com, which also has breaking news and many additional articles and photos.

HALLMARK EDITOR

Mike Piercy, Malmsmead, Kiln Lane, Lacey Green, Bucks HP27 0PU
(just before the pond on the right) 01844 344021 Email mike.piercy@gmail.com

ADVERTISING MANAGER

Fiona Quilter-Wood. Barn Cottage, Idle Corner, Main Road
email hallmarkadverts@gmail.com 07809 624 864

VILLAGE HALL BOOKINGS

Karen on 07922 184 886

COFFEE MORNINGS

Held in Village Hall 10am - 12 noon
Thursdays. Friendly chatting with tea or
coffee and biscuit.

OVER-50s PUB LUNCH

Do you want to meet some more residents?
Come to the monthly lunch on the first
Tuesday of the month at the Black Horse.
Even if you know nobody you will be
welcome and can meet your neighbours.
Contact Leigh on 345216

VILLAGE HALL MANAGEMENT COMMITTEE

Clive Hodgton (Chair)

Cathryn Davies (Secretary)

Leigh Axe (Treasurer)

Karen Hodgton (Booking Sec.)

Yvonne Axe, Vivien Sheehan,

Gill Mortimer-Biggs,

Jane Hervé, Mike Piercy

LACEY GREEN WINDMILL

The windmill will reopen on Sunday April 2 and then be open from 2pm to 5pm on Sunday afternoons and Bank Holidays throughout the summer. Additionally, on National Mills Weekend it will be open from 2 pm to 5pm on Saturday May 7th and 11am to 5pm on Sunday May 8th.

For more details see www.laceygreenwindmill.org.uk email: contact@laceygreenwindmill.org.uk

Printed by Hartgraph Ltd 01628 810 523

CLOSING DATE FOR COPY FOR THE MAY EDITION
April 17th 2022

MOBILE TYRE FITTING WE COME TO YOU!

- Car, Van & High Performance Tyres
- Specialist Wheel Alignment Service
- Truck & Plant Tyre Specialist
- Trade/Accounts Welcome
- Wheel Balancing
- 4 x 4 Tyres



**Stockists Of All Leading
Makes Of Tyres**

T
tyreteam
mobile



T: 01494 565920

AAAAAA TYRETEAM MOBILE

ACCOUNTANTS FOR SMALL BUSINESS

At TaxAssist Accountants we specialise in supporting small businesses. We can help with:

- Self Assessment Tax Returns
 - Business Accounts
 - Corporation Tax
 - Bookkeeping and VAT
 - Business Start-ups
 - Company Formations
 - Payroll and HR
 - Help with Finance Raising
-and much more.

 **TaxAssist Accountants**
The Accountancy and Tax Service for Small Business

01296 752014

www.taxassist.co.uk/aylesbury

BLEDLOW ART EXHIBITION

SAT 30th April & MON 2nd May 10-4pm

SHOWCASING: PAINTINGS, PRINTS, SCULPTURE, EMBROIDERY,
BATIK, PHOTOGRAPHY, MIXED MEDIA, JEWELLERY



REFRESHMENTS
SERVED!! £3 ENTRY
All Door Takings To Go
To Bledlow Church &
Positive Life Kenya



HOLY TRINITY CHURCH
CHURCH END
BLEDLOW
HP27 9PD

www.stewartclough.com