

# HALLMARK

The magazine for Lacey Green and Loosley Row

March 2025

Issue 273





# VILLAGE ENVIRONMENTAL SERVICES DOMESTIC DRAIN SERVICES

Proprietor: Dennis Cook  
Est. 1979

24/7  
CALLOUT  
SERVICE

# BLOCKED DRAINS?

# CALL US DAY OR NIGHT

FAMILY RUN BUSINESS SINCE 1979  
BLOCKED DRAINS CLEARED • REASONABLE RATES  
NO EXTRA CHARGE FOR EVENING, WEEKEND  
OR BANK HOLIDAY CALLOUTS  
CCTV DRAIN SURVEYS  
FULL PUBLIC LIABILITY INSURANCE



07850 635 844  
01296 624 221 (MESSAGES)



## Welcome to the March edition

**EDITOR** Mike Piercy 01844 344021 mike.piercy@gmail.com

**ADVERTISING** Fiona Quilter-Wood. email hallmarkadverts@gmail.com 07809 624 864

**VILLAGE HALL BOOKINGS** Natasha on 07737 638718 laceygreenhall@gmail.com

I am sorry to say that I had no response for my appeal in the last edition for someone to come forward and take over editing Hallmark. I intend to retire in the Summer (after 15 years) so the June issue will be my last. There is still time to handover the magazine to a new editor or team, so if you are interested please get in touch.

The Village Hall AGM will be held on Tuesday March 11 at 8pm. Come along to meet the committee and air your views. Free wine and soft drinks for all comers!

### Council elections

Buckinghamshire is holding elections for Council members on Thursday May 1. The Boundary Commission have decided to reduce the number of councillors from 147 to 97 (which should

give a good saving).

Lacey Green is part of the Ridgeway West ward, we currently have three councillors and this will drop to two. So political organisations can enter one or two candidates and you will have two votes to cast.

If you wish to stand then you must enter by April 11. If you need a postal vote then request this before April 14.

### The Whip

I met the new owner of The Whip. He seemed like a nice gentleman and was very friendly. He's intending to make a major investment to refurbish the whole building and is looking forward to opening in the Spring. He told me that they will be running an Indian restaurant but he intends to keep the bar going.



**Mike Piercy**  
Editor

## School goes solar

In a pioneering move for primary schools in Buckinghamshire, St Johns School has installed a significant number of solar panels along with storage batteries.

This marks a significant step towards sustainability and smarter energy use. This initiative not only highlights the school's commitment to the environment but also presents an exciting educational opportunity for pupils to learn about renewable energy firsthand.

At a time when many village schools face financial challenges, this forward-thinking project is set to reduce energy costs, allowing savings to be reinvested directly into resources and programs that benefit the children.

"This isn't just about saving money—it's about teaching our pupils the importance of sustainability and showing them, that even small communities can make a big difference," said Rebecca Wright, Headteacher at St Johns School. "We're proud to be leading by example and giving our students a chance to engage with real-world solutions to climate change."

The installation is expected to reduce the school's carbon footprint significantly while also serving as a hands-on learning tool.

Teachers plan to incorporate the solar panels into science and geography lessons, giving students a deeper understanding

of renewable energy and its impact on the planet.

Local officials and community members have praised the initiative, seeing it as a beacon of progress and innovation in the region.

**David Bundock**  
Operations Officer





## LACEY GREEN WINDMILL

EVENT TO CELEBRATE THE RENOVATION OF THE WINDMILL



A FUN EVENING with dancing & supper.  
Ceilidh Band: Madeleine Smith and The Chinnor Troubadours



FRIDAY 4 APRIL 2025  
18.45 - 23.00 hours  
Doors open at 18.30 hours

Lacey Green & Loosely Row Village Hall  
Lacey Green





Ticket price £20 pp to include a sharing starter and a choice of 2 main courses.

Licensed paid Bar & a raffle

WE LOOK FORWARD TO SEEING YOU

To purchase tickets and for more information contact


Jane at [jane@laceygreenwindmill.org.uk](mailto:jane@laceygreenwindmill.org.uk)

# THE CURIOUS INCIDENT

## OF THE DOG IN THE NIGHT-TIME

Adapted by Simon Stephens based on the book by Mark Haddon



26 & 27 March 2025 7:30 pm at Hastoe Village Hall  
29 March 2025 2:30 pm & 7:30 pm at Lacey Green

[www.equusproductions.org/tickets](http://www.equusproductions.org/tickets)

This is an amateur production in association with Concorde Theatricals on behalf of Farnham French Ltd

# WHAT'S ON

## March

Tuesday 11 March 8pm Village Hall AGM

Wednesday 19 March 8pm Horts Club AGM followed by WHAT'S IN A NAME by Heather Houston

Saturday 22 March 2pm Horticultural Society Spring Show

Friday 28 March Ladies Wellbeing and Pamper Night by SHH

Saturday 29 March 2.30 & 7.30: Equus presents "The Curious Incident of the Dog in the Night"

## April

Friday 4 April 18.45 Windmill Committee Ceilidh (see opposite)

## May/June

Sunday 11 May 11am Horticultural Society Plant Sale at the Village Hall

Wednesday 21 May 8pm Horticultural Society talk on pollinators

Saturday 18 June St John's Church 200<sup>th</sup> anniversary celebrations begin see page 22

## HEATHER BREED UPHOLSTERY



I am a local lady, fully  
qualified in both  
traditional and modern  
upholstery work.



For a free quote & advice call  
Heather on 0795 4176401

Please view my portfolio on Instagram or Facebook



@heatherbreedupholstery



HandmadebyHeatherB

## Yoga For Healthy Lower Backs

### A specialised 12-week Course

An evidence-based mind body approach to improving  
lower back function and reducing pain

- Reduce/ eliminate lower back pain
- Improve flexibility and strength
- Suitable for beginners



"Great course and amazing teacher.  
After 7 years of neck, shoulder and back  
pain, I now have weeks of no pain and am  
improving all the time" Sarah

**Courses in Lacey Green**

For more information and to sign up, contact

07711 588214

[hello@clairepageyoga.com](mailto:hello@clairepageyoga.com)

[www.clairepageyoga.com](http://www.clairepageyoga.com)

## LACEY GREEN WINDMILL

The windmill will reopen in April 2025

For more details see [www.laceygreenwindmill.org.uk](http://www.laceygreenwindmill.org.uk)  
email: [contact@laceygreenwindmill.org.uk](mailto:contact@laceygreenwindmill.org.uk)

## POST OFFICE

Village Hall: Monday & Thursday 9 - 12

## COFFEE MORNINGS

Held in Village Hall 10am - 12 noon  
Thursdays. Friendly chatting with tea or  
coffee and biscuit.

## OVER-50s PUB LUNCH

Come to the monthly lunch on the first  
Tuesday of the month at the Black Horse.  
Even if you know nobody you will be  
welcome and can meet your neighbours.  
contact Leigh on 345216





ChildCare Malawi is a local micro charity providing practical assistance for disadvantaged children in Malawi and ongoing support for their families. We send an annual consignment of good quality, nearly new items to Malawi for distribution free of charge and would be grateful for donations of:

- ★ Clothes for babies, children, teenagers and adults suitable for a warm climate (not woollens or coats)
- ★ Summer shoes, sandals and flip-flops for all ages
- ★ Bags, handbags and rucksacks
- ★ Simple toys and games (not requiring batteries)
- ★ Picture, story and reference books for primary school age groups
- ★ Towels and bedding (including duvets and blankets)
- ★ Reasonably new smartphones (unlocked)
- ★ Laptop computers and compact digital cameras in good working order
- ★ Wedding dresses and all bridal accessories

Clare Clements ★ [www.childcaremalawi.org.uk](http://www.childcaremalawi.org.uk)  
 clare@childcaremalawi.org.uk ★ 07973 725 060



## BOURNE END SWIMMING CLUB



Offering the perfect balance of a friendly environment with competitive opportunities, our philosophy is to provide all members with the chance to swim to the best of their ability, regardless of their aspirations...

- Flexible swim times with low membership fees
- Up to 4 hours of swimming each week (Spring 2021)
- Using the fantastic pool at Wycombe Leisure Centre
- High ratio of coaches to swimmers
- Swim England Qualified Coaches
- Swimmers need to be at Swim England Learn to Swim Stage 6

**BE Involved**

**BE Inspired**

**BEJSC**

Contact  
us now for a  
FREE trial

[www.bejsc-swimming.org.uk](http://www.bejsc-swimming.org.uk)  
[join@bejsc-swimming.org.uk](mailto:join@bejsc-swimming.org.uk)

Trusted by 1000's of cat owners!

**Going on Holiday?**

Trust The Cat Butler, the sitting service that's **exclusively for cats!**

- ✓ Feline friendly cattery alternative.
- ✓ Free home care & security service.
- ✓ Affordable daily home visits.
- ✓ Fully vetted and insured.

**Give us a call and let us pamper your feline friends in the familiar surroundings of their own home.**

01844 213961  
[thame@thecatbutler.co.uk](mailto:thame@thecatbutler.co.uk)

Visit us at [www.thecatbutler.co.uk](http://www.thecatbutler.co.uk)

# TUTORS

Experienced, qualified tutors offer coaching for:

11+ transfer test (assessment test also available)

All Key Stage levels, GCSE or AS/A level in English, Maths, French, German, Sciences.

English as a foreign language (EFL)

Telephone 01844 347471 or 07884350939

# Lacey Green Windmill

Lots of exciting news about the windmill.

## Restoration work

You will have seen that the stocks and sails are back on the windmill. It took longer than we thought but over the two days when the sails were refitted the weather was fantastic and the guys worked really hard. I received this lovely message from a Lacey Green resident which says it all 'The sun is shining and I keep looking out of my kitchen window at our beautiful windmill, it makes me smile'.

We still have some work to do, the blades on the fantail have been remade by one of our volunteers, a new winding gear has been recast, again by one of our volunteers and two windows and a door are being replaced. We are so lucky to have such talented people around! Hopefully all this work will be completed by the time we open on Sunday 6th April.

The Granary will be painted and other ideas will no doubt come to fruition over the summer!

Photos included so you can see the work that has been undertaken.

## Other news

Open days during 2025:

We open to visitors on Sundays from 6 April until 28 September, Bank Holiday Mondays and Saturday 10 May for National Mills Weekend. Opening times are 14.00 to 17.00 hours. Please come along, we would love to see you.

Group visits - we hope this will become a regular feature as they are very popular. We have a few booked already including a Primary Academy visiting in March and a U3A group who visited last year. A local walking group will be visiting in June after a walk in the local area. We hope to arrange a visit from St John's CofE Primary School in Lacey Green, the headmistress is keen to support the windmill which is brilliant.

The Chiltern Society's Heritage & Culture Festival is held twice a year and a visit to the windmill is included as part of National Mills Weekend, an annual event across the UK.

## Celebration event

The April celebration event in the LG&LR Village Hall has been very popular and sadly by the time Hallmark is published all the tickets will have been sold. We are considering organising another Ceilidh later in the year, October/November; we will keep you posted.

Supporters are always welcome, if you have any spare time and want to volunteer please get in touch with Jane by email: [jane@laceygreenwindmill.org.uk](mailto:jane@laceygreenwindmill.org.uk)

Jane on behalf of the LGW Committee





Over 400 5 star  
reviews on  
**feefo**

**SURAB**  
LIMITED



## YOUR LOCAL, RELIABLE PLUMBING, HEATING AND BATHROOM EXPERTS

### BOILERS

Servicing, repairs and installations

### CENTRAL HEATING

Fault finding, installation and upgrades

### BATHROOMS

Design and installation specialists

### PLUMBING

From dripping taps to full installations



Reg No. 141996  
GAS/LPG



Reg No. 763  
OIL



Established for  
over 25 years

Free no obligation  
quotations

01844 274 604 info@surab.co.uk www.surab.co.uk



## YOUR LOCAL FARM PARK

Tickets  
from just  
**£3.50**  
Free for under 2's

### HAVE YOU VISITED YET?

A LOVELY TRIP OUT FOR ALL THE FAMILY  
INDOOR CAFE SERVING HOT & COLD FOOD

GREAT FOR LITTLE LEGS  
LOVELY FRIENDLY ANIMALS  
FREE PICNIC AREA  
BASED IN LACEY GREEN



For more information visit us online [www.widmerfarmpark.co.uk](http://www.widmerfarmpark.co.uk)

Find us on Facebook & Instagram

Widmer Farm Park is located at Widmer Feeds Country Store, Pink Road, Lacey Green, Bucks, HP27 0PG

# Behind the Curtains with Equus

Thank you to all those who supported our performances of Peter & Wendy and Apologia last year, two very different productions!

This year, we are changing things up again and at the end of March we are producing "The Curious Incident of the Dog in the Night-time". This fabulous, multi award-winning play follows the life of Christopher Boone, a young autistic boy, who decides to investigate the killing of his neighbour's dog, and this sends him into a much deeper journey to discover the truth about his parents' split, the wider world around him and eventually to learning about independence and what he is capable of achieving.

This beautiful book has been on bestseller lists ever since it was first published in 2003 and is often at the top of the nation's

favourite reads. It was turned into a play and first performed at the National Theatre before a very successful move to the West End.

It is a big challenge to take this on and we are delighted at how our cast and crew have worked to bring our vision to life. Do come along and support them, buying a ticket will also help to support the fabulous charity Dogs for Autism and we have a BSL signed performance on the Saturday matinee.

We have just completed the auditions for our next show which will be staged at the Village Hall in September. "The Great British Bake Off the Musical" is a heart-warming and uplifting musical based on the famous television show – so if you are a fan, this will be one not to miss! It also isn't too late to get involved with

this one, so do let us know if you are interested.

We love to meet and welcome new people, and enthusiasm and commitment are more important to us than experience. We try to nurture and encourage talent and confidence and always remember that although many of us have worked professionally in theatre in the past, Equus is our hobby and our passion and, therefore, the process has to be fun! If you fancy getting involved with us either on or off the stage, we would love to hear from you – and if not, we hope to see you in one of our audiences.

## Fiona Quilter-Wood

Artistic Director,  
Equus Productions  
[artistic@equusproductions.org](mailto:artistic@equusproductions.org)

# Tennis Club

Spring is finally in the air and with it comes enthusiasm for tennis! The courts are starting to get busier as members come out of hibernation and dust off their rackets. We are all looking forward to the summer league and friendly competitions and tournaments!

We are excited to announce that the Club is in an advanced planning stage to bring Padel tennis to our community.

Padel is the world's fastest-growing sport, popular with the likes of David Beckham, Anthony Joshua and Andy Murray, and is a cross between tennis and squash.



It is played on a half sized enclosed tennis court with the ability to hit off the sides. It's very popular as it's easy to pick up, good for mixed abilities and age groups and it's a good work out while being kind on your joints!

There are currently only six courts in Buckinghamshire, and we hope to be live by mid-summer.

## Dan's award

Our amazing coach, Dan, has been awarded coach of the year. His nomination included recognition of his hugely popular tot's tennis sees him playing the role of a shark, dog trainer and tennis coach and his ability to "Teach the unteachable".

Coaches like Dan are extremely rare, he is a brilliant player and coach. We are extremely lucky that he enjoys the challenge of teaching us and the club simply wouldn't be the same without him!

## Gin and Fizz

Our ever popular Gin and Fizz night was due to be held at The Sports club on 14th March, but has been postponed to a little later in the year. The event is open to everyone and we would love to see lots of people there!

## Nicola Housby



**Yoga For Healthy Lower Backs**  
A specialised 12-week Course  
An evidence-based mind body approach to improving lower back function and reducing pain

- Reduce/ eliminate lower back pain
- Improve flexibility and strength
- Suitable for beginners

*"Great course and amazing teacher. After 7 years of neck, shoulder and back pain, I now have weeks of no pain and am improving all the time" Sarah*

**Courses in Lacey Green**

For more information and to sign up, contact  
07711 588214  
hello@clairepageyoga.com  
www.clairepageyoga.com

**BUTCHERS - TIMPSONS -**

**Order Quality Christmas Meat**  
http://www.timpsonsmallholding.co.uk to see our Christmas Meat Price list and place your order.

**Our shop is open**  
Tuesday – Saturday from 9am until 4pm  
Unit 6, Ministry Wharf, Saunderton HP14 3XA

We also offer FREE local delivery!  
@timpsonsmallholding@hotmail.co.uk

**extremeclean.co.uk**  
Superior Cleaning and Application of Protectors

Carpet, Upholstery, Leather  
Modern & Oriental Rugs  
Curtains  
Tile & Grout/Stone Flooring  
Anti-Allergen Treatment  
Specialist Stain Removal  
Wood Floor Refinishing  
End of Tenancy Cleans

**Paul Brooker**  
35 Place Farm Way, Monks Risborough  
Bucks HP27 9JJ  
**T: 01844 346379 / 344735**  
**M: 07866 376934 E: jjjp@uwclub.net**  
www.extremeclean.co.uk

**Priority Service Ltd**

*Cleaning - Regular  
Spring Clean  
End Of Tenancy Clean*

**01844 275151**  
Friendly, local and professional service

## Rural Community Defibrillator Group

Since 2014 RCDG has been working to provide public access defibrillators in rural locations, in and around Princes Risborough. To date we have 31 sites installed where none previously existed.

Recently we have become increasingly aware that the early metal cabinets have been causing faults to occur with the electrical supply, to an extent where a few had to be taken off the 999 register.

The solution was to remove all 10 of these and replace them with the later plastic cabinets at a cost of some £5000. This has only been possible with the help of the North West Chilterns Community Board (part of Buckinghamshire Council) and local parishes who have generously donated towards the cost of the installations.

We were therefore extremely grateful to everyone for their help towards funding for this endeavour which enabled all 10 to be replaced and reinstated on to the 999 register.

Lacey Green has benefited from this with the defibrillator cabinet located outside the Village Hall being replaced. In addition we very much welcome the news that an additional defibrillator has been installed within the parish at the Sports Club and another is due shortly on Lower Road, Loosley Row.

Our thanks go to everyone concerned in making this happen and again to the North West Chilterns Community Board and the local Councillors who supported this work.



Community Board  
North West  
Chilterns

### Mark Tubb

Chairman  
RCDG



## Windmill WI

This will be a short report as we have only had one meeting this year. We had a very enjoyable Christmas Meeting with a delicious meal put together by some of the committee. We also had a quiz and listened to carols.

In February we had John Tyler with a talk 'Reading the Countryside'. John's talks are always very interesting especially as a lot of his slides are of local places.

In March we are due to have Bill Hamilton speak to us - Man on the Spot.

On 15th March we are having a Jumble Sale. We will receive Jumble in the Village Hall from 10.30 but no Electrics or large pieces of furniture.

We are having an outing to Greatmoor in March.

We meet at the Village Hall on the first Wednesday in the month (except January) at 7.15 pm. If you would like to come and join us you will receive a warm welcome. We have lots of interesting speakers and outings.

**Ann Bartlett**



# Hair 2 Dye 4

by Samantha Woods, ITEC, BACH, NVQL3

## All Hairdressing Services Offered

from my home salon in Shootacre Lane, Princes Risbrough, or in your home

## Crystal and Reiki Treatments

Crystal facials, Crystal massages, Swedish massages  
using pre-blended essential oils

## Crystal and Tibetan Sound Bowl Treatments

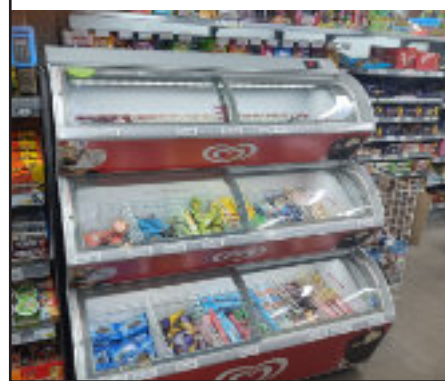
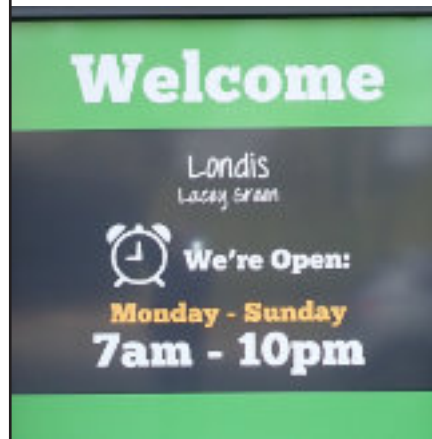
07843 257 689

[www.crystalheartandsoul.co.uk](http://www.crystalheartandsoul.co.uk)

[info@crystalheartandsoul.co.uk](mailto:info@crystalheartandsoul.co.uk)

## Lacey Green Convenience Stores

We have bread, milk, newspapers, hot drinks and all the day-to day items you may need; with the purchasing power of Londis to keep our prices down



# Council News

We continue to encourage community groups to participate in the North West Chilterns Community Board and take advantage of the available funds to carry out projects, especially as from May it will be reformed to match the overall local Buckinghamshire Council ward boundary changes which will take effect at the election.

## Carers strategy

The Council has launched a comprehensive 'All-Age Carers Strategy' – aimed at making life easier for everyone who provides regular unpaid care and support to another person in Bucks. The strategy has been co-produced by the council, alongside health partners and representatives across social care and the voluntary and community sector. It sets out the joint commitment to carers of all ages in Buckinghamshire, to ensure they are valued and supported.

The new strategy details how the council and its partners will continue to develop and deliver meaningful support to unpaid carers, to enable carers to maintain a positive quality of life alongside their caring role.

Key highlights of the new strategy are:

- Identification of carers: with more organisations recognising unpaid carers, understanding their needs and signposting to support.
- Partnership collaboration: working together to better support carers across the system and sharing information across organisations.
- Health and wellbeing support: empowering carers to access support and keep themselves healthy.
- Access to information and guidance: with improved digital information and wider reach enabling more people to access services.

- Community engagement: strengthening community networks to foster a supportive environment for carers, including across employers and education settings.

The Carers Strategy is set to be implemented over the next five years, with regular reviews to ensure its effectiveness and adaptability to the evolving needs of carers.

## Cycling, and walking strategy

A Local Cycling and Walking Infrastructure Plan (LCWIP) for Buckinghamshire, which will guide future investment in active travel infrastructure across the county, has been adopted by the Council.

Buckinghamshire has been awarded more than £2 million by Active Travel England to spend on developing further active travel projects and infrastructure in the county.

The Buckinghamshire LCWIP proposes a network of 'corridors' suitable for cycling, walking and 'wheeling' (adapted cycles, wheelchairs, mobility scooters, prams and push scooters), to connect towns and villages. The LCWIP has considered different journey destinations, including employment, education, public transport, local facilities and visitor attractions.

Following approval of the LCWIP by Cabinet, the Council will continue to undertake further work to establish how these 'corridors' could be created, including local engagement, design work and seeking external funding – which is essential to progress these schemes.

The LCWIP 'corridors' may include new or improved off-road routes, routes alongside roads or crossing points.

## Buckinghamshire Lottery

In recognition of Random Act of Kindness Day (17 February 2025), we're asking Buckinghamshire residents 'which good cause will benefit from your random act of kindness?' There are already over 1,500 active players across Buckinghamshire who helped raise nearly £94,000 last year for local good causes - and we'd like to see even more!

The Lottery supports over 380 good causes in the county to raise invaluable funds. By purchasing a ticket for just £1 per week, players not only have the opportunity to win cash prizes including the weekly £25,000 jackpot, but 60p of every ticket sale goes directly towards supporting local good causes. From animal charities, scout groups, charities providing support for health issues like cancer, mental health and Alzheimer's, local food banks, sport clubs and youth projects - there's a good cause close to everybody's heart.

Please consider registering with Buckinghamshire Lottery to kick start your fundraising and make a positive impact to the community (and you could potentially win big yourselves) by purchasing tickets. Good causes can register, and players can sign up at [buckinghamshirelottery.co.uk](http://buckinghamshirelottery.co.uk) /

If you have any other matters or concerns relating to Buckinghamshire Council don't hesitate to contact either:

**Shade Adoh**  
**Robert Carington**

[robert.carington@buckinghamshire.gov.uk](mailto:robert.carington@buckinghamshire.gov.uk) 07515 997953

[shade.adoh@buckinghamshire.gov.uk](mailto:shade.adoh@buckinghamshire.gov.uk) 07941 618331



# St John's Church

## Dec 1 Toys and Carols

The church would like to say thank you to everyone who bought toys for the Salvation Army to distribute to those in need. I think we all like an excuse to buy toys, especially when we know they are going to good homes!

It was St John's Church's turn to host this area's Churches Together in Britain and Ireland, an initiative where different Christian denominations meet regularly working for unity, peace, and social justice. This made the Advent Carol service very special.

Represented were of course Saint John's, plus ministers, readers, singers and / or members of the congregations of Saint Theresa's RC Church, Kimble Free Church, Princes Risborough Methodist Church, St. Mary's Princes Risborough, St. Dunstan's Monks Risborough, and Princes Risborough Baptist Church.

Everyone stayed to chat with mulled wine and home-made mince pies after the service. As in many other walks of life it is heart-warming to celebrate our similarities, and interesting to talk about our differences.

## Dec 14 Festive Afternoon Tea

We were entertained royally by the Baking Powder Folk Band and the Early Birds Saxophone Quartet, whilst enjoying the anticipatory atmosphere in the church, with the huge beautifully decorated Christmas tree holding its usual place in the Social Chapel, acting as signpost towards all our Christmas worship. We are lucky to have Canon Tony, who plays so many musical instruments and is always willing to enhance the event, or indeed the services by playing alongside Cher, Ian and Ken, or by bringing the many groups and bands he plays in to entertain us.

## Dec 19 Choir Visit

This year the choir visited Fremantle Court, singing carols for the staff and the residents, some of whom still have their homes in Lacey Green or Loosley Row. They were made very welcome and felt very appreciated. ( Except for one lady who kept shouting out "How many more are you going to



sing?") Well you can't please them all!

## Dec 22 Nine Lessons and Carols

The service was made particularly special by so many friends, old and new, joining the choir for this service. (see below) We had men and women from



Lacey Green, Loosley Row, Speen, Princes Risborough, Naphill, Longwick, Hazlemere and even Munich and Porto as we were joined by Tom Mole and Ines Costa. As a result the music was glorious.

## Feb 17 Cake and Coffee Morning



This was held, for the first time, at The Sports and Social Club, Lacey Green, which turned out to be a lovely warm and welcoming venue. The sun shone for us, proving that it does indeed shine on the righteous! As a result we had an enthusiastic group of children collecting designated items from the playground for the pop up scavenger hunt and happily crafting whilst the adults could enjoy a wide range of cakes. Donations were very generous and will go towards flowers for our 200th anniversary events

**Jenny Stothard**

# Red Lion Tea Room

One of my friends from the tennis club was extolling the virtues of the Red Lion Café and Tea Room at Bradenham so I arranged to visit and chat to Lisa who runs the place.

Most of you will know that practically all of Bradenham and its houses is owned by the National Trust. Back in 2017 the Red Lion pub fell vacant and the trust decided they would like to have a tea room in the village.

Lisa Hunt has worked in the hospitality industry for years, most recently running a pub in Hurley. She decided that running a tea room would give her a better quality of life and agreed to take on the lease. She converted the building so it now has a kitchen and servery area with two

rooms with a dozen dining tables. The ambience is warm and snug with subdued lighting and plenty of room between the tables. There is disabled access but the limitations of the building rule out full disabled toilets.

The majority of the clientele drive to the café and there is a big car park round the back. They also get lots of walkers as there are many beautiful walks around Bradenham – and dogs are welcome. Though most visitors are of a mature age, young families and children come too.

The prime reason for visiting is the quality of the food. Lisa is very proud that all the items on the menu are home made and cooked from scratch. She employs a specialist pastry chef

to ensure high quality. The menu features plenty of vegetarian and vegan items and the gluten-intolerant people are also catered for.

In recognition of this the Red Lion was awarded the Best Café or Tea Room in Bucks at the Food and Drinks Award last October. Her loyal regulars had entered the competition without Lisa's knowledge and it came as a massive surprise when she won.

The Café is very busy nowadays – even in winter, and Lisa recommends that you book your table in advance – especially at weekends.

**Mike Piercy**



# St John's Church continued

A note from Billy Stott, who, having been a regular choir member in his youth, returns to St John's as often as he can.

What a joy it was to be back singing at a St John's at Christmas!

This Christmas I was once again kindly allowed to re-join the choir to sing at as many Christmas services as I was able.

We had lots of laughs in the Monday evening rehearsals in the weeks leading up to the start of the Advent and Christmas period and it was great to be part

of a choir again. I'm not a regular member of a choir anymore and for me it was a joy to be singing with lots of familiar faces, and also some new ones. I think I counted 19 in the choir for the Lessons and Carols service, which I think may be a record for recent years. We had a good balance between female and male voices, almost equal numbers of each which is very unusual these days!

I obviously wasn't part of the congregation, so am not sure how it sounded in the rest of the church, but in the choir stalls it sounded and felt not too bad at

all. Cher was, as always, wonderful at leading us (more like corralling us sometimes, which was needed) and she and Rosemary selected fantastic music for us to sing, while Gavin beautifully accompanied us on the organ and swelled the bass ranks with his voice.

Thank you to Cher, Gavin, Rosemary and all of the marvellous singers I was blessed to join.

**Billy Stott**



### Why switch to full fibre broadband?

Do you bank or shop online? Have useful apps on your phone or keep in touch with loved ones on social media?

Perhaps you regularly stream entertainment such as Netflix or Disney+ on your TV, use digital technology to secure your home or make the most of money-saving smart gadgets?

Whichever way you currently use your broadband in rural Lacey Green, the chances are your need for faster and more reliable broadband is only set to increase. That's because as the digital world expands, the less likely it is that your existing part fibre broadband will cope with the demands on it.

You see, the part fibre that you're likely on, is inherently slower and less reliable because fibre optic cables only go as far as a cabinet in your community, after which your broadband travels to your home along out-dated Victorian-era copper telephone wires. In contrast, Gigaclear's 100% full fibre is up to 15 times faster and five times more reliable because our fibre optic cables go direct to your property.

And for many of you reading this in Lacey Green, you'll be pleased to learn our full fibre cables are already outside your property - so all you have to do is call our friendly Oxfordshire-based team to arrange an installation.

As for the reason you may want to switch? Well, it's likely you'll find you can enjoy your rocket-fast broadband for less money than you are currently paying!

And for anyone\* with a landline telephone, Gigaclear offers Home Phone, its digital phone service, with packages starting at only £5 per month – and no monthly line rental charges. And you can keep your existing telephone number!

Want to find out more? Visit [gigaclear.com](http://gigaclear.com) or call 0370 774 0514

\*Please note: we do not recommend you purchase home phone if you are reliant on your landline due to disability or accessibility requirements and do not have alternative means to contact emergency services in the event of a power outage.

# Horticultural Society

The year saw the society off to a flying start with an excellent and very well attended talk by John Tyler, our local wild life expert. John talked about the Ridgeway, the long distance path which passes through Princes Risborough's outskirts and on over the Chilterns to Avebury. Having walked a large part of that it was interesting to see John's excellent photographs and to hear about the people who made and used the track and lived alongside it. This, together with snippets about the flora and fauna to be encountered on the Ridgeway made a very entertaining evening.

We look forward to our AGM, the third Wednesday in March. As always, we will keep the business part of the meeting to a minimum and this will be followed by a talk entitled 'What's in a Name?' Heather Houston will talk about people who have given their names to plants.

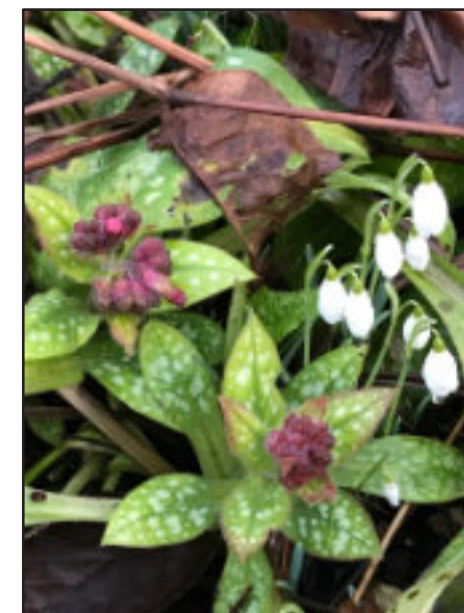
We also look forward to our Spring Show to be held on March 22nd at the Millennium Hall. Full details are on the village website pages for the Horticultural Society. At the time of writing things are not looking promising, wet and dull! However, there are signs of spring already in the snowdrops beginning to flower and the daffodils peeking out from the earth. Buds are also showing green on many of the shrubs and climbers, so it won't be long before things burst into bloom and things look optimistic again.

Now is the time of course to start planning your vegetable plot and what to grow. Annuals can be sown in a greenhouse or on the windowsill from now until April, depending on the variety. If you are not keen to sow your own, try coming along to the plant sale in May.

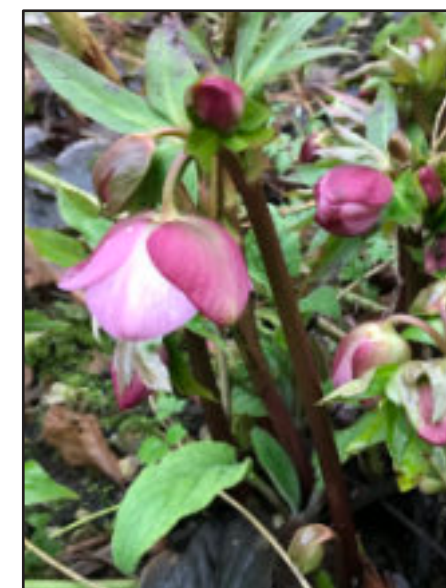
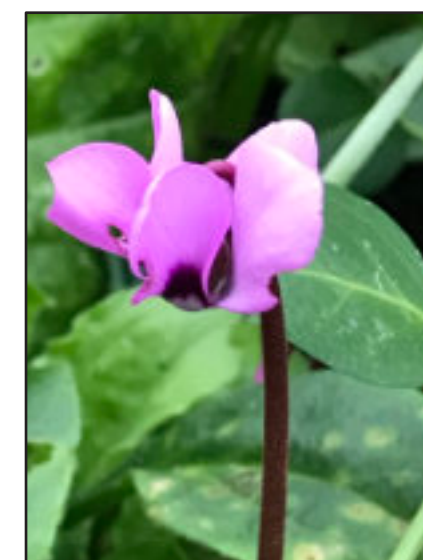
Sowing is not difficult and provides a lot of satisfaction! You can grow in pots and grow bags; you don't have to have a massive vegetable plot to benefit from delicious home-grown vegetables. A few climbing

French beans will provide you with wonderful produce for up to 3 months. Pumpkins are great fun for children as they scramble along the ground and up fences and even trees! There are very tasty varieties to be had too. Why not give something new a try this year? If you are new to growing veg then please ask the society. We can usually answer your queries or if not, we know someone who can!

In my other role as Chair of the National Sweet Pea Society we are currently busy planning activities to celebrate 125 years since the foundation of the society. Sweet peas are annuals which provide so much pleasure. I have just finished a second sowing of seeds in a heated greenhouse and will move them to a cold and airy place as soon as the shoots appear. They then go into the ground in my vegetable plot and if the slugs and mice leave them alone, they should be flowering by the end of May. I hope this year will be better than last year; the cold spring caused the plants to drop their buds, so flowering was very late. If you don't want to sow your own, but like to smell them and see them make a plan to visit the Early National Show at Millets Garden Centre, near Abingdon from 21st-22nd July. More details of growing and showing Sweet Peas can be found on the NSPS website: <https://sweetpeas.org.uk>



### Alison Shreeve





# BETSY WILLIAMS SOLICITOR



**INSTRUCTION TAKEN IN YOUR OWN HOME**



*Betsy is a qualified Solicitor who comes to you to help with:*

- Wills • Probate • Inheritance Tax planning
- Lasting Powers of Attorney • Trusts
- General elderly client work

*Betsy, you were a real star and made what, for me, would have been a difficult task a really pleasant one due to your kind understanding and patience and of course, your lovely sense of humour! Thanks again Betsy."*

Mrs T

*"May I say what a pleasure it was working with you. You are a considerate professional, not to mention a lot of fun! Thank you for your unending patience."*

Mrs K

**Call: 01844 342083**  
for a free no obligation chat  
or email [betsy@betsywilliams.co.uk](mailto:betsy@betsywilliams.co.uk)

For more information and referrals - [www.betsywilliams.co.uk](http://www.betsywilliams.co.uk)

## THE BLACK HORSE



WE ARE A TRADITIONAL COUNTRY PUB THAT OFFERS A RANGE OF HOME-MADE PUB CLASSICS, AS WELL AS SEASONAL SPECIALS!

OPENING HOURS  
MONDAY - SATURDAY: 12PM - LATE  
SUNDAY: 12PM - 9PM

LUNCH: MONDAY - SUNDAY 12-2:30  
EVENING: MONDAY - SATURDAY 6-8:30

CALL TO BOOK YOUR TABLE ON 01844 345195  
SEE OUR FULL MENU AND EVENTS @  
[WWW.THEBLACKHORSELG.CO.UK/](http://WWW.THEBLACKHORSELG.CO.UK/)

Happy New Year from all of us at The Black Horse!

Thanks to all those who came in over the festive period and supported their local. We are currently halfway through February and have just finished some spring cleaning around the pub!

Our food times are now lunches Tuesday to Sunday 12-2:30 and evenings Wednesday to Saturday 6-8:30. We have plenty of

specials on the boards so make sure you come in soon to try some of our new dishes out!

We have plenty more events planned over the next couple of months, so keep an eye on our Facebook page for the latest news. We will be posting a Mother's Day Menu!

It is always a pleasure to have the company of the Over 50's Pub Lunch on the first Tuesday of the month. All are welcome so if you are

interested in joining, please see the contact details at the back of the Hallmark.

The Crib and Domino Team are having a great season again. Well done to them! If you are interested in getting involved, please don't hesitate to get in touch with Lynne.

**The Black Horse Team**

## Happy Wanderers

Unfortunately since our visit to Swanage in early October, we have only been able to have one walk as the weather has been so wet and cold. We are hoping for better things as the year progresses.

We did though manage to have a very enjoyable mulled wine and mince pie get-

together between Christmas and New Year. A few people walked beforehand but the majority came straight to the social gathering. It was good to be able to wish each other a Happy and Healthy 2025.

Our AGM will be held in the Village Hall on Sunday March 23rd at 11am. We would love

to see some new faces to swell our membership as our numbers are getting smaller due to people moving away and all of us getting older! We are very friendly and welcoming.

**Liz Lewin**



# Speen Pilates

STRETCH • STENGTHEN • CONTROL



Reformer Pilates one to one, by appointment

Duet classes, by appointment

Small group mat classes (6) Booking essential

Monday  
9am, 10.15am, 18.45pm

Tuesday  
9.30am, 18.45pm

Friday  
9am, 10.15am

Amanda 07733 307 475  
amandapilates@btinternet.com  
www.speenpilates.co.uk



## ACCOUNTANTS FOR SMALL BUSINESS

At TaxAssist Accountants we specialise in supporting small businesses. We can help with:



- Self Assessment Tax Returns
- Business Accounts
- Corporation Tax
- Bookkeeping and VAT
- Business Start-ups
- Company Formations
- Payroll and HR
- Help with Finance Raising
- .....and much more.

01296 752014  
www.taxassist.co.uk/aylesbury



THE PRINCES CENTRE  
AWARD WINNING DAYCARE

The weather may be miserable at times but a very positive atmosphere exists in the Princes Centre. There haven't been many recent trips this last month but members of staff took some clients in their own time to the Waterside Theatre in Aylesbury to watch Calamity Jane. It was very enjoyable for the clients who would not have been able to go there themselves.

The gardening group visited a local garden centre and were very impressed with the flowers there. Whilst there, one of the

clients was able to visit a shop, where he used to help out, which was an emotional experience for him. Lots of trips are planned for the future.

Indoors we have had karaoke sessions, artwork, lots of games, cornhole, darts, cardio drumming, pampering sessions, cooking sessions, craft work, playing games on the Tiny Tablet and a wonderful 'Pet Therapy' session where clients were able to stroke or touch various animals including a rabbit, guinea pig, rat, chicken, bearded dragon, snake,

tortoise and a lovely little dog.

The staff have organised a new programme of activities which gives clients a choice of group activities and have purchased some more equipment to enhance the activities. Group activities include learning about Current Affairs, Guest speaker's trips, the Local Community, Nature [bird-watching, visiting pet zoo, Tring Museum, Tring Zoo, and Tiggywinkles Wildlife Hospital], Transport, Gardening, Story writing, Music, Cooking, Pampering sessions etc.



## Planning Applications

You may be aware that all planning applications are published on the Buckinghamshire Council Planning Portal, for the public to view. Residents can go to <https://publicaccess.wycombe.gov.uk/idxpa-web/> and look in more detail at the plans and comment if they wish

Two examples of current applications are:-

- **Erection of a pair of semi detached dwellings on land to the rear of Windmill Cottages**  
Windmill Cottages Main Road Lacey Green Buckinghamshire  
Ref. No: 24/08022/FUL | Received: Mon 16 Dec 2024 | Validated: Mon 16 Dec 2024 | Status: Awaiting decision
- **Construction of 3 x 3-bed and 1 x 5-bed dwellings, creation of dropped kerb from Main Road, garaging, hard/soft landscaping and associated works**  
Erith Cottages Main Road Lacey Green Buckinghamshire  
Ref. No: 24/07369/FUL | Received: Wed 02 Oct 2024 | Validated: Mon 18 Nov 2024 | Status: Awaiting decision

All of the above have been copy and pasted from the website

We cannot be responsible for any errors or omissions





## A Celebration of The 200<sup>th</sup> Anniversary of St. John's Church June 28<sup>th</sup> – July 6<sup>th</sup> 2025

[stjohnschurchlaceygreen.com](http://stjohnschurchlaceygreen.com)



## Timetable of Events

We hope that the whole village will join in this very memorable occasion. Events have been planned to suit everyone. Most are free. Some will have a small charge, and for some you will be asked for donations.

**Sat. 28th June** All Day Beating the Bounds.

An opportunity to walk all or part of the 11 mile circumference of the Parish.

**Sun 29th June** 10.00.a.m. Church Service

A normal Communion Service

**Sun 29th June** 3.00.p.m. Songs of Praise

Village Organisations or individuals can choose their favourite hymn.

**Tues 1st July** Pageant by St. John's School

This will be a ticketed event with a small charge of £5 to cover costs, presented by the Pupils of St. John's school.

**Wed 2nd July** 11.00.am. and 2.30.p.m. Conducted Tours of Church

A chance to find out about the history of the church, and also the school and the village.

**Thurs 3rd July** 7.30.p.m. Celebratory Evensong

A special service to mark the actual day of the consecration of the church. It is hoped that the new Bishop of Buckingham will attend.

**Fri 4th July** 7.00.p.m. Conducted Tour of Church

See above. An evening tour for those who cannot come in the day.

**Sat 5th July** 3.00.p.m. Organ concert and tea

A chance to hear a professional organist playing our beautiful Samuel Green Organ. There will be a charge for tickets, which will include drinks and refreshments.

**Sun 6th July** 10.00.a.m. Church Service, followed by Bring and Share lunch for the whole village.

This will be the last day of the celebration. After morning service, there will be a Parish Bring and Share lunch in the Vicarage garden. Everyone is welcome to come and join in.

After Easter, you will be able to obtain further information and book tickets on the St. John's Church website. If you have any queries, or would be willing to help in some way, phone 01844 345863.

**Rosemary Gabbitas**

(Secretary to the 200th Anniversary Subcommittee)

## Social Snapshots: Winter Weather

From the Lacey Green head teacher's logbook:

### 1912

January 18th. Very severe weather. January 31st. Very severe weather. February 5th. Ink wells frozen this morning.

Lacey Green School then consisted of just the old part next to the road, which was not made up with pavements as we know it. All the children walked to school, some even from as far as Green Hailey and near Saunderton Station. Here are some more reports just for good measure :-

### 1919

January 13th. Weather very severe. January 20th. Very stormy. Road unfit for children to stand about in, so kept all the children that were remaining for dinner inside the school to take their meal.

From January 22nd to February 3rd weather was reported as very severe. Children cannot work well. Heavy snow has rendered the roads almost impassable. All the children are wearing their coats, arranged to be as near the fire as possible. Drill taken frequently to keep warm.

February 4th. Thawing slightly. February 5th. Snowing heavily all day. Allowed children living in outlying districts to leave early as the snow was deep, notwithstanding the plough had cleared the first fall. Attendance good considering the severity of the weather, and the long distance many had to come and the cold of the main room.

February 7th and 12th Weather still unusually severe. On February 12th thermometer 32 degrees at opening of school. February 18th. Attendance very reduced owing to heavy snow falling.

From March 4th to 12th Heavy Rain, impossible to go out to play. Roads in a very muddy state.

March 18th and 20th. Heavy snowstorms, raining, more snow. Roads in very bad condition, almost impossible for children coming long distances.

March 24th and 31st. Weather very severe. April 8th. 10th and 14th Rained heavily every day. April 28th. After Easter. Very cold. 37 degrees at 9am. Showers of snow and hail at intervals during the day.

### 1947

is renowned as being a very bad winter. I have a photo of me, aged 8, holding an icicle that was as tall as my shoulder. It wasn't an exceptional one, there were dozens of them.

### 1963

living at no 1 Stocken Cottages, John and I were going on holiday (February is a good time for farmers to get away). We had to dig our way through a snowdrift to get out of our front gate. The snowdrift was still there on our return a fortnight later. That same winter I took a photo of Slad Lane with the snow completely filling it up to the top of the hedgerows (see below).

In the 1950's and 60's the snowplough came down the Main Road throwing the snow to the side, heaping it onto the pavements. When it came through Walters Ash it then cleared the way into Bomber Command. The snow it threw aside there, effectively blocked the New Road to Lacey Green. Gerald Bedford who worked at Stocken Farm, Lacey Green, would go home to Naphill on a tractor, and would open-up the road in the evening and morning. This let the villagers in and out.

There is much more from the Teachers' Logbooks, Bill Cleaver's regular reports on the weather and how the Council eventually stopped snow blocking the open roads reported on the Media Wiki - [www.LaceyGreenHistory.com](http://www.LaceyGreenHistory.com) in which I am putting together our local history. Put 'Weather' into 'search', (top right) to access.

I would welcome any comments or information you might be able to provide to add to the wiki about our local history, on any subject or photos of people or events. Please email to [laceygreenhistorywiki@gmail.com](mailto:laceygreenhistorywiki@gmail.com) Thank you to those who replied to my report on dentistry.

**Joan West**





**TheFirst choice in 11Plus Tutoring**

- Bespoke programme.
- Qualified teachers.
- Small class sizes.

*Enrol now for a free trial lesson!*

07484 171465  
 inspire11.co.uk  
 info@inspire11.co.uk




**Shaun Guard**  
**TV & WIFI SERVICES**

- Aerials - supplied, repaired & poor reception solved
- Satellite - Sky Q dish upgrades, discreet dish installation
- Internet - black spots cured, internal & external data cables installed
- TVs - hung on your wall or set up & tuned

**OXFORD AERIALS**  
 www.oxfordaerials.co.uk shaun@oxfordaerials.co.uk  
**Call Thame 01844 391468**



**A Hills Electrical**  
 Domestic Electrician  
 Free Quotes  
 No call out charge, No job too small  
 All domestic work undertaken.  
 Part P registered.  
 Call Andy 07864 128150  
 Hillsandy010@gmail.com



**SELF-CATERING  
 ACCOMMODATION**  
 WINDMILL FARM, PINK ROAD,  
 LACEY GREEN, PRINCES RISBOROUGH HP27 0PG  
 TEL. 01844 343901  
 Email: windmill\_farm@hotmail.com

WEEKENDS AND SPLIT WEEKS AVAILABLE  
 LINEN PROVIDED - SLEEPS 2-4  
 S.T.B. 2 STAR NON SMOKING

*Ideal for Touring, Walking, Riding etc.  
 Stabling available*

**These Four Walls**  
 Rachael  
 07956 250031  
 hello@thesefourwallsinteriors.co.uk

Design Colour Consultation Styling  
 Decoration Painting



**Builder / Gardener**

20 years of experience in all trades: Carpentry, Plumbing, Electrics, Decorating, Repairs. Also garden design and execution, brickwork and fencing.

*No job too small  
 Friendly, fast and efficient service*

Contact Alexander 01844 347471  
 mobile: 073885 51754  
 iamandiciprian81@gmail.com

## HOME TECHNOLOGY HELP



- Mobile phone, PC/laptop upgrades
- Data transfer between devices
- Printer setup, configuration, diagnostics
- Wi-Fi/Bluetooth network troubleshooting
- Smart TV setup, Sky system upgrade advice
- Small business system upgrades/refresh

Call Dave in Lacey Green on  
**07831 775142**  
**NO FIX – NO FEE**



**OVENPROUD**  
 To book your oven in or to ask for a quote  
 Call 01494 488744

Ovenproud  
 "the best you can get in domestic oven cleaning"

# On the Farm

The days are getting longer; we have had snowdrops and the odd daffodil has made an appearance. Spring is around the corner, and we are heading out of winter. The grass is starting to grow again, we were able to roll two new grass leys in February that were planted last autumn. We have to do this before the grass gets too long. This is to push the flints in to the ground so we don't hit them with our mower when we make silage.

The grass grew well into December, but the ground is very wet. Anyone walking the paths around and about may well have noticed that we have had sheep in, they are just visiting for a month or so. Thank you to everyone that has called or messaged when they have spotted issues with the visitors, there always seems to be something up! They are here to eat all the old grass ready for the new spring growth.

We recently won the Thame Farming Club's grass silage competition, this is silage made last year. We went on to the next round against 5 other farming clubs and came second which was a shame as it would have been a result to have the best silage in Oxfordshire!

The Agricultural and Business Inheritance tax changes announced in the Autumn are still casting a dark shadow over the farming industry.

There will be farmers in a very dark place on what is currently being played out in Westminster. With the future of an inevitable tax bill hanging over a business, like an unexploded bomb in the front yard waiting to go off when the one that holds the deeds dies. Family farms are often multi-generational. It would not be unusual for there to be 3 generations working together; an older generation with two younger generations doing the farming, making a living, growing food.

Farmers have been trying to make a presence felt with various rallies, several in London, the last one involved 1,400 tractors in Whitehall. Charlotte represented the farm, she was amazed at the public support on the day. See the photo taken in Whitehall. You may not have seen this, especially if you get your news from the BBC, there was almost no coverage! So far, very dignified affairs, but emotions are running high. Farmers do not believe the government figures.

For example, I have a dairy farmer friend in Cornwall whose father still owns the farm which is not unusual, he is 95. He farms with his 60 year old sons and their sons.

If he dies after April 2026, when the new rules kick in, the inheritance tax bill will be too much to pay from profits, even when split over 10 years. They will then have to sell business assets. You could sell the cows but then you have nothing to milk; you could sell the land but then you don't have enough to run the business; either way the business will not survive in its current form. The older generation would have spent their whole life building the business. The farm is everything to them; their home, their business, their life. I sincerely hope his father resists the strong temptation to not still be here after next April; it is a very real and appalling situation to be in.

Who will buy the land? Most farmers cannot afford it. It will still appeal to wealthy non-farmers as they can avoid 20% inheritance tax. The likelihood is less land will be farmed by established businesses that are the main producers of food. This could certainly dramatically reduce our ability to produce the food we currently do at Stocken Farm. We will only know the true consequences as they unfold. Let's hope other



countries don't all rewild their land and can keep producing enough food to sell to us in the UK, to feed our approaching 70 million population.

The NFU, together with other farmer organisations, recently had a meeting with Treasury ministers to discuss all the complications this policy will bring. They had suggestions on how the IHT proposals could be restructured to still raise the tax they required, and not seriously effect so many food producing businesses. They were basically told to go away. Disappointing.

On a brighter note we did an early spring bird survey in mid-February, 43 species were recorded. The stars of the survey were: a large flock of chaffinch in our winter bird feed patch, some brambling, a stonechat and 2 common snipe.

**Richard West**



# The Importance of Visiting an Audiologist



Hearing with clarity is a precious gift but, for millions, hearing loss poses a challenge to communication and overall well-being. The best way to get the most out of your hearing aids and tackle your hearing loss is through the expertise of a hearing aid audiologist, like myself.

Audiologists undergo specific education and clinical training, to help understand and treat your hearing loss. We don't just put hearing aids on your ears; we assess your hearing, provide recommendations and give support throughout your hearing journey.

We can accurately identify the type and severity of hearing loss. Through various tests, discussions with you and evaluations, we gain insights into the causes of your hearing loss, allowing us to help address your unique needs and lifestyle preferences.

Our approach to hearing care extends beyond the initial fitting of hearing aids. At Aston Hearing we take the time to understand your individual concerns. From selecting the most suitable hearing aid to providing education on proper usage and maintenance, we guide you through every step of your hearing journey, empowering you to make informed decisions about your hearing health.

By staying informed about innovations and best practices, we can recommend cutting-edge solutions that enhance the effectiveness and comfort of your hearing aids. Whether it's the latest noise-cancelling features or connectivity options that integrate seamlessly with your smartphone and other devices.

The relationship between myself and a client is built on trust and continuity of care. I forge long-term partnerships with you, providing ongoing support and adjustments as needed. This personalised approach fosters greater satisfaction and reassurance, ensuring that you can enjoy improved communication and quality of life for years to come.

Choosing to visit a hearing aid audiologist is a decision that can profoundly impact your quality of life. With our specialised expertise, personalised approach, and commitment to ongoing support, we are uniquely qualified to help you navigate your hearing loss and rediscover the joy of clear, vibrant sound.

When it comes to your hearing health, trust in the expertise of a hearing aid audiologist for unparalleled care and support!

Hearing Support • Earwax Removal • Hearing Technology

Call us or visit [astonhearing.co.uk](http://astonhearing.co.uk) to book your comprehensive hearing health assessment

Flint Barn Court, Church Street, Old Amersham | 01494 733 840

The Farmhouse at The Grange, Haw Lane, Princes Risborough | 01494 733 845

Greyhound Lane, Thame, Oxfordshire | 01844 396 057



## Parish Council

Would You Like To Help Keep Lacey Green & Loosley Row Nice Places To Live – Care What Happens To Them?

If so, we are looking for people willing to serve on the Parish Council. The Parish Council is responsible amongst other things for: recruiting and overseeing contractors for the installation and on-going maintenance of the children's playground; the benches/seats around the Parish; bus shelters and notice boards; the Parish Garden of Remembrance and Cemetery; grass areas around the Parish that require mowing and to be kept tidy.

In liaison with the Unitary Council and the Police, the Parish Council has initiated schemes to keep local roads safe – especially for children – and all residents. We will continue to do so by constantly monitoring the situation to help protect pedestrians, cyclists, horse riders

and vehicle drivers as they move in and around Lacey Green, Loosley Row and Speen.

The Parish Council also keeps a watching brief over the general appearance of the local environment and surroundings, liaising with the Unitary authority and other interested parties to ensure that our local surroundings can be enjoyed by all residents, their visitors and, indeed, all other visitors to the area.

With growing pressures for building development on Green and Grey Belts, another important function is for the Parish Council, in liaison with Unitary Council, to review planning proposals. This, ensures plans for development are sympathetic to adjacent properties and do not conflict with design of surrounding dwellings and the rural nature of our locality.

All proposals are reviewed realistically and in terms of practicality. We do not act with "nimbyism", but with objective of considering what is appropriate for our villages and their residents.

We are an apolitical Parish Council and looking for new Council members who care and are willing to contribute to enhancing and preserving the areas of Lacey Green and Loosley Row as nice places to live for all residents young and old. The Parish Council meets once monthly (with exception of August) and we assure all applicants that the work is not too arduous but very interesting.

If you would like some more information, please contact the Parish Clerk on [clerk@laceygreen-pc.org.uk](mailto:clerk@laceygreen-pc.org.uk)

We look forward to hearing from you.



SHH held a series of very successful fundraising events in 2024 for the four hospices the group supports.

Now for 2025 we are once again organising a series of events and wherever possible these are held in different local Chiltern villages.

Although the group was established back in 2001 in Speen, we are looking for a lot more input from the local villages like Naphill, Lacey Green, Loosely Row, Great Hampden, Prestwood, Bryants Bottom and Hughtenden.

We would welcome interest from ladies from these areas who

might want to get involved and help us to promote events in your locality.

We are also looking for individuals to help with the fundraising. We were most fortunate to have the support of a member of High Wycombe Rotary Club who raised £1,500 in the autumn by a charity abseil down the Spinnaker Tower in Portsmouth. You too, might be thinking of taking part in a marathon, half marathon or fun run this year and if you are, would you consider running on behalf of SHH or what about organising a Golf Challenge with some inter village rivalry!

If you are interested in raising money by taking part in an event or finding out more about becoming part of our fundraising group at SHH, please contact me [events@shh-shop.org](mailto:events@shh-shop.org) or 07778803260.

Our second fundraising event of 2025 takes place on Friday 28th March at Lacey Green Village Hall from 7.00pm – A Ladies Wellbeing and Pamper Night

For further information about all our events check out our website [www.shh-shop.org](http://www.shh-shop.org)

**Gráinne Suter,**  
Chair SHH



# MOBILE TYRE FITTING WE COME TO YOU!

- Car, Van & High Performance Tyres
- Specialist Wheel Alignment Service
- Truck & Plant Tyre Specialist
- Trade/Accounts Welcome
- Wheel Balancing
- 4 x 4 Tyres

**Stockists Of All Leading  
Makes Of Tyres**



**tyreteam**  
mobile

AAAAAA TYRETEAM MOBILE



**T: 01494 565920**



**STALLWOOD LANDSCAPES**  
& GARDEN MANAGEMENT

**Friendly - Efficient - Local**

All aspects of hard and soft landscaping undertaken

Garden restoration and maintenance

Hedge and tree care

Qualified horticulturist with 25 years experience

Hampton Court RHSS Silver GILT MEDAL WINNER

**QUALITY AS STANDARD**

For a free quote and advice call Alex on

**07725 743857**

## Sports Club

Happy New Year from everyone here at the Sports Club. We have lots of exciting things happening at the club and I can't wait to tell you more.

The Race Night went very well with our best year ever! We managed to raise £3,500 for the club with over 120 tickets sold and a busy night at the bar! Thank you to everyone who came and those who helped. Special mention to Jane Oakford and Phil Duff for the Chilli, David Pocock loud voice, Caleigh Pocock and Sam Oakford for helping on the bar and our "Bookies". We were grateful to Country Supplies and The Black Horse for sponsoring the event and to those who sponsored races including RNM Gas Heating and Plumbing, Leanne Page, Lynne Comley, Rob CCBS, Ian Leech, Tyre Team, P. A. Spittles Landscapes and Paul Ice Plumbing and Heating. This event would not have been possible without Tom Oakford and all his hard work organising the event!

We have also had a Bingo night just last week where we raised £300, so thank you to all that attended and Tim Page and Steph Dell for organising. Thank you also to all our sponsors who contributed prizes: Leanne Page, Lynne Comley, Vanity Beauty, Andria Bryant, The Hampden Arms, Makyla Devin, Dan Smith, Tesco and Michelle Turner

The Sports Club are proud to announce some exciting news - we now have a defibrillator installed down the club! This is available for use by anyone in the community and is registered with Circuit for emergency use. This is a great asset to the village and would not have been possible without grants from the North West Chilterns Community Board and The Department of Health and Social Care.

We have also been making other improvements to the club, most noticeably the patio which is nearly complete with just the slabs to be laid. Thank you to our grounds team and sponsors for all your help so far: Tom Oakford, Chris Oakford, Tony Comley, Rob Henry, Country Supplies, CCBS, PA Spittles Landscapes Ltd, Camcrete, Grant & Stone, Hawes, Stocken Farm, Surebuild and Simpatico.

The club has had a fresh coat of paint thanks to Kenny and Phil Dell for volunteering their time. The next step is to put the photos back up that have been reframed, of sports teams over the last 75 years.

We have finished making upgrades to the building to make sure that we meet all fire regulations. Our tractor has gone away for a much needed overhaul and some TLC - thank you to Andy for volunteering to undertake this

for us. Our next projects include some tree surgery and replacing the gang mowers.

Looking to the year ahead we have lots of exciting events planned. Make sure you are following our Facebook page for all the latest information. We will definitely be having some kind of disco as well as a race night in the autumn.

There are also other fundraisers in the pipeline with the other sections of the sports club so make sure you look out for information on our website ([www.lglrsc.co.uk](http://www.lglrsc.co.uk)).

We have seen an increase in bookings for the club and hope to see this interest continue into the New Year. If you are interested in hiring the hall for any event please don't hesitate to get in touch at [lglrsportsclub@gmail.com](mailto:lglrsportsclub@gmail.com). We can host parties with or without a bar, or even be a meeting place for events and clubs!

Once again a big thank you to everyone who has joined us at the club or volunteered over the last year, without you we would not have a Sports Club.

All the best,

The Sports Club Committee



# Useful local numbers

Local		National	
Bucks Council	0300 131 6000	Gas Emergency	0800 111999
Councillor Etholen	07810 442617	Water Emergency	0800 3169800
PR Community Bus	07941 963097	Electricity Emergency	0800 404090
PR Information Centre	01844 274795	Power Cuts	105
PR Library	01296 382415	NHS Direct	111
Brownies (Naphill)	01494565571	Police non-emergency	101
Scouts (Naphill)	01494 565955	Childline	0800 1111
Hughenden Doctors	01494 562189	Samaritans	116 123
Cross Keys Doctors	01844 344488	Crimestoppers	0800 555111
Unity Health Doctors	01844 344281	Citizens Advice	0808 2787938
Sprinz & Nash Vets	01844 345655	Consumer Advice	0808 2231133
Womens Aid	01494 461367	The Arts Society West Wycombe	07885 232171
Equus drama group	07809 624864		
Sports Club	07768 831196	<b>VILLAGE HALL MANAGEMENT COMMITTEE</b>  Clive Hodghton (Chair)  Jane Hervé (Secretary)  Leigh Axe (Treasurer)  Natasha Kann (Booking Sec.)  Yvonne Axe, Vivien Sheehan, Pam Bowell, Cathryn Davies,  Fiona Quilter-Wood	
Tennis Club	01844 342771		
Parish Council	07495 300626		
Black Horse Pub	01844 345195		

## Defibrillators

There are defibrillators at the Village Hall, the Sports Club, and Lower Road, Loosley Row.

In case of a cardiac emergency dial 999 and the operator will talk you through how to use it. It requires no previous training.

Hallmark is published quarterly by the Lacey Green and Loosley Row Millennium Hall Management Committee, although opinions expressed in comment or contribution do not necessarily represent the collective view of that committee.

A version of this printed Hallmark may be found on our website [www.laceygreen.com](http://www.laceygreen.com), which also has breaking news and many additional articles and photos.

Printed by Hartgraph Ltd 01628 810523

**CLOSING DATE FOR COPY FOR THE JUNE EDITION**

**May 15th 2025**



**DISCOVER LACEY GREEN HISTORY WIKI**  
Connecting the People, Places and Social History of Lacey Green's past

**FREE TO USE**  **WEBSITE** [www.LaceyGreenHistory.com](http://www.LaceyGreenHistory.com)

 **CREATED BY** JOAN WEST  **Follow on Facebook** Lacey Green History Wiki

*including the work of many local history researchers*

Intrigued by the past around us? Explore Lacey Green, Loosley Row, Speen, Local Parishes and Hamlets

**Welcome to "Lacey Green History Wiki", it is a place to explore Lacey Green of the past: the people, the places and the events that shaped our history.**

My name is Joan West and local history research is my passion. For over 50 years I have enjoyed investigating local history and putting it together like a jigsaw. It is an ever-evolving picture.... And growing media wiki! Rather than keep it all to myself I wanted to share with others, who I hope will be as curious and intrigued as I have been.

In this wiki, local people, places and events are recorded and linked so that it is possible to trace back through their stories.

For me it all began in 1971 when I hoped to discover the history of Stocken Farm, my husband's family home. Dennis Claydon was already working on the local history here. Dennis and I spent many hours in the Local Records Office, sharing our discoveries. In 1970 the village magazine Hallmark was launched providing more general information and in particular research by Miles Marshall and Rita Probert.

In 2008 the Local History Group was formed when Dennis Claydon and I declined to write a local book knowing that once printed it could not include any new information that came to light. It was decided to put that information on a website.

In this wiki I am putting information from all these sources so that all those people, places and events can be linked to tell their stories, with as many photographs as possible.

So, now you are here, to get started scroll down the indexes below and click on a page. Organised by:

- Properties
- People
- "Social Snapshots" in Decades
- Roads or Locations
- Amenities
- Organisations

Once you are on a page, people, places and events tell their own story, and are linked together where possible

Please have fun and explore! [www.LaceyGreenHistory.com](http://www.LaceyGreenHistory.com)

**Follow us on Facebook: "Lacey Green History Wiki"**

Do you have information to add to the wiki? Please email [LaceyGreenHistoryWiki@gmail.com](mailto:LaceyGreenHistoryWiki@gmail.com)





A person with short, wavy blonde hair is seen from the back, looking at a computer monitor. The monitor displays a grid of bright, glowing squares. The background is dark, and the overall scene is dimly lit, with the primary light source being the screen.

# SEE BETTER

JACKSON & Co



247 Main Road, Walters Ash // 01494 564600